

New England's Heart Belongs to Both Candidates; Odds About Even



WINS NOMINATION — Claiborne de Borda Pell, 41, won a lopsided victory for the Democratic nomination for United States senator in Rhode Island by defeating J. Howard McGrath and Dennis J. Roberts, two seasoned politicians. He and his wife, Nuala, are shown after his victory. (UPI Telephoto)

Taillight Thefts Reported to Police

Stealing taillights from 1959 Cadillacs has apparently become a "fad" among certain members of Medford's younger set, according to city police.

Police received their fifth complaint in recent months Wednesday of taillights being stolen from the late-model Cadillacs.

This complaint was from Ralph Eugene Pierce, 2100 Woodlawn dr. He told police the taillights valued at \$35 were taken from the car while it was parked in front of his residence recently.

Last week, police received two reports of taillights being stolen and early in the summer they received two others. All of the taillights were reported taken from 1959 Cadillacs.

Why the vandals have selected this particular make and model of car to steal from, police are not sure, but they surmise that some persons are taking the lights because they believe it to be a "fad."

Persons caught taking such items as taillights can be charged with petty larceny which carries a maximum penalty of one year in the county jail and a \$500 fine, according to city police.

meetings; and provided other services.

And because of the United Medford Crusade and their work, each year the Girl Scouts are able to carry on their reason for existence — service to all.

Girl Scouts not only learn new things and have fun, but they also put these attributes to demonstrative proof — that is, it is fun not only to help others but to cooperate with them too.

Throughout the program, fun and companionship between adult and girl is constantly stressed. Girl Scout activities prove to be a good example of what is wanted of teenagers, and this is one reason why the United Medford Crusade investment in Girl Scouting pays off.

Vermont Expected To Remain GOP; Others Undecided

By FRANK DONOGHUE
Boston — (UPI) — Somebody once said practical politics consists of ignoring facts.

But whether you ignore or heed the facts, New England politics is as unpredictable as its weather.

New Englanders will vote in November for two native sons, Democratic presidential nominee John F. Kennedy and Republican vice-presidential nominee Henry Cabot Lodge.

This fact alone — and one that can't be ignored — puts the balloting in doubt in at least five of the New England states. The exception: Vermont, which is expected to stick to its deep Republican tap-roots.

President Eisenhower captured all six states in 1956. Neither party is expected to win the bloc this year.

Massachusetts perhaps tops the political puzzle in New England because its heart belongs to two candidates. Both Kennedy and Lodge are from Massachusetts.

May Have Edge
Kennedy, as a presidential candidate, may have an edge in Massachusetts. But Lodge, the blueblood who stood up to Russia in the United Nations, is held in high regard by Democrats and Republicans alike.

The GOP high command hasn't written off Massachusetts. To the contrary, Republican strategists are making Massachusetts a front line in its offense to win votes for GOP presidential nominee Richard M. Nixon and his running mate.

On paper, Massachusetts is a Democratic state. There are about 800,000 registered Republicans.

But one million voters declare no party affiliation in the Bay State. These are the "independents" who could tilt the outcome either way. Their votes are the most coveted by both camps.

Democrats acknowledge, privately that Lodge's stature has risen since his defeat by Kennedy for the U. S. Senate in 1952. Kennedy beat Lodge by 70,737 that year.

In Connecticut, Democrats appear to have a slight edge in the presidential footrace since this year, for the first time, the registered Democrats outnumber registered Republicans.

About Even
Democrats beat the Republicans in a registration race in Connecticut by a whisker. The results: 51 per cent of the registered voters are Democrats.

Connecticut Gov. A. A. Ribiuff boarded the Kennedy bandwagon two years ago. He may steer it to victory but only over rough tracks.

Connecticut Republicans have no where to go except up. Ribiuff's landslide win in 1958 produced a Democratic sweep of all six congressional seats. Ribiuff isn't running this year — his term has two more years to go — and Republicans feel they can get their feet back in the door.

The person who once said "As Maine goes, so goes the nation" probably regretted that utterance. It just isn't so. Maine often has gone one

way, the rest of the nation another.

Maine is expected to go for Nixon-Lodge this November.

Peter M. Damborg, veteran political analyst for the Guy Gannett Newspapers in Maine, said that Nixon is getting stronger in Maine with each day of the presidential campaign.

Nixon has visited Maine five times since becoming vice president, including a recent trip. He billed himself as a "favorite son," a play on

Kennedy's New England "native son" theme.

Solid for GOP
New Hampshire, believed to be the only state in the nation that is Republican in every major public office, will stay that way, from all indications. Republicans traditionally out-vote Democrats by better than two-to-one in that state.

Frank O'Neil, political editor of the Manchester (N.H.) Union Leader, said "it is difficult to see how Kennedy can upset the Republican

trend in New Hampshire." To win, O'Neil said, Kennedy would have to cut very deeply into registered Republican ranks "to make it even a close run and his chances of doing this are remote."

The religious issue — Kennedy's Roman Catholicism — has not been the emotional issue in New England that it has been elsewhere in the nation.

But the religious question exists in New England even if it is dormant.

Girl Scouting Has Many Opportunities

Opportunities for fun, community service and friendship can be found for girls from the ages of 7 to 17 in the Girl Scouts.

Through donations to the United Medford Crusade, some 992 Brownies and Girl Scouts in the Medford area take their responsibilities seriously to help create a better community.

IT FLOATS!
Yes, this quality FISH and HUNTING KNIFE in wooden scabbard floats! Stainless steel blade with a keen edge and a serrated edge on top for scaling. You'd expect to pay much more than only \$3c for this quality knife. At the store next to Piggy Wiggly on Stewart

Village Variety
S&H Stamps

A Girl Scout learns at an early age to be of service to her family and community when she starts in Brownies at the age of 7. For three years, the Brownies have a sampling of Girl Scout work by participating in community life, health and safety, homemaking, understanding of nature and teamwork.

Becomes Scout
At the age of 10, a Brownie may "fly-up" and become an Intermediate Scout, and in the ninth grade go into Senior Scouting. The girls have contributed much to the community this past year by helping on a toy drive for Christmas where they cleaned, sorted, collected and wrapped toys; manned a booth at the local Sports Fair; participated in a city cleanup drive; worked in a local nursery and kindergarten; took care of flower boxes in front of local stores; provided baby sitting for PTA

meetings; and provided other services.

And because of the United Medford Crusade and their work, each year the Girl Scouts are able to carry on their reason for existence — service to all.

Girl Scouts not only learn new things and have fun, but they also put these attributes to demonstrative proof — that is, it is fun not only to help others but to cooperate with them too.

Throughout the program, fun and companionship between adult and girl is constantly stressed. Girl Scout activities prove to be a good example of what is wanted of teenagers, and this is one reason why the United Medford Crusade investment in Girl Scouting pays off.

MONARCH MONARCH MONARCH MONARCH

PLANT Spring Flowering BULBS NOW!



DUTCH BULBS
From HOLLAND
GOVERNMENT INSPECTED

BONE MEAL
9 lbs. 98¢

HYACINTHS
18/19c
Big, Vigorous Bulbs
Fine for forcing

HYACINTHS
Bedding Size
10 for \$1.35

King Alfred DAFFODILS
No. 1 Double Nose
10 for \$1.49
100 for \$11.95

BULB PLANTER'S SPECIAL...
INSURE AGAINST INSECTS AND DISEASE

BUY 10 OZ. DUSTER
ORTHO
SOIL & BULB DUST
regular price \$1.49

GET 1 LB. REFILL
FREE
REGULAR \$1.49
LIMITED TIME ONLY

A \$2.98 VALUE FOR ONLY \$1.49

CROCUS
4 Colors
10 for 45¢

- Ranunculus—mixed colors . doz. 50c
- Anemone—single or double 10 for 55c
- Parrot Tulips 8 varieties
- Darwin Tulips 15 Varieties
- Double Tulips 7 Varieties
- Red Emperor Tulips 10 for \$1.10
- White and Yellow Emperors 10 for \$2.95

6th and Bartlett

MONARCH SEED FEED
6TH AND BARTLETT 10TH AND SOUTH FIR

75 VARIETIES
to choose from!

Plant Early for Finer Blooms

BUY BULK BULBS
(You never get any bad bulbs)

Lilly's Bulb and Tuber Fertilizer
4 lbs. \$1.00

SPECIE TULIPS
Peacock Mixed (You must have some of these)

10 for \$1.60

Mixed Tulips
10 for 59¢

BULBS FOR FORCING
Paper White NARCISSUS and Chinese Sacred LILIES
15c each
10 for \$1.40
Planting Helps FREE

MAKE WAY FOR THE NEW 1961 G-E TVs...

EVERYTHING MUST GO!

SAVE \$60

G-E 21-Inch "FORECASTER"

Was \$309.95
CLOSE-OUT \$249.95

LAST of The 1960 TVs
at Low, Low Close-Out Prices!

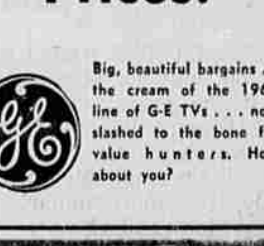


SAVE \$30

New 17-Inch "Designer" TV With Handle!
Reg. \$229.95

\$199.95

\$30 OFF on All Handle Models!

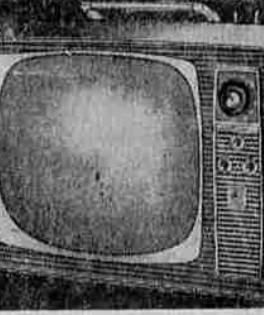


'60 G-E TO THE FLOOR 21" CONSOLE
Regular \$319.95
CLOSE-OUT! \$259.95
SAVE \$60

HURRY!
They won't last long!

115 E. MAIN MEDFORD

Park Shop



'60 G-E 21" Consolelette
With Removable Legs
REGULAR \$299.95
CLOSE-OUT! \$259.95
SAVE \$40



'60 G-E 21" Console
Mahogany Finish
REGULAR \$279.95
CLOSE-OUT! \$249.95
SAVE \$30

HAPCO.
Home Appliance Co. Stores growing with Oregon