



MELANIE KAHANE, FAMOUS DECORATOR, SAYS:

"TAKE A 'GUEST'S EYE' VIEW OF YOUR LIVING ROOM"

## What a big, big difference Bigelow Beauvais makes!

### A roomful of Bigelow carpet costs lots less than you think!

For example, the average cost per month for Bigelow's 100% wool-face Beauvais, in this lovely Early American Block Floral, in a 12 ft. by 18 ft. size, is only about —

**\$10.70 per month • \$12.75 per month**  
FOR A ROOM-SIZE RUG      WALL-TO-WALL  
 INSTALLED INCLUDING  
 PADDING AND LABOR

BUDGET TERMS AS LONG AS 36 MONTHS IF DESIRED

Choose from Bigelow's wide range of beautiful Beauvais patterns, permanently moth-proof, and priced at only about \$12.95 per sq. yd.

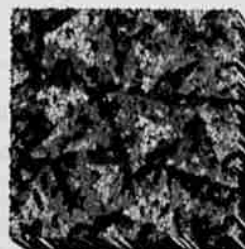
Look for the name Bigelow, your assurance of lasting carpet satisfaction! You'll find a wonderful world of Bigelows . . . in every weave, texture, or color you could desire . . . at your dealers!



**Block Floral** (above) . . . A colorful provincial pattern that radiates smart good taste. Thrives on traffic, minimizes soil, conceals footprints. One of a variety of lovely period designs. 100% wool-face, moth-proof.

**Pyramid Sculptwist** (Briarwood, left) . . . A smart self-color texture with a casual, modern, tweedy look. One of 7 handsome multi-color patterns. 100% wool-face, moth-proof.

**18th Century Floral** (right) . . . Stunning rose panels on a rich black background create an elegant classic effect. 100% wool-face, moth-proof.



**Contemporary Self-tone** (left) . . . Subtle briarwood shade in an all-over figured pattern. Perfect with every decor. One of 5 exciting contemporary colorings. 100% wool-face, moth-proof.

**Pyramid Sculptwist** (Green, right) . . . Another smart self-color contemporary design in a sparkling tweedy texture. One of 7 delightful multi-colors. 100% wool-face, moth-proof.

PEOPLE WHO KNOW...BUY **Bigelow**

FOR THE NAME OF YOUR LOCAL BIGELOW DEALER SEE HIS ADVERTISEMENT IN THE GENERAL NEWS SECTION OF THIS NEWSPAPER.