



**'BLUE SCOUT' ROCKET**—The Air Force Wednesday launched its first "Blue Scout" rocket on a 17,000 mile journey into space. Authorities said the Blue Scout could "conceivably" pay its way by locating a "safe area" for high altitude testing of nuclear explosions and in developing a system of detecting similar tests by other nations. This artist's conception shows the second and third stages as they separate in space. (UPI Telephoto)

### Boy Scouts Get Year Round Plan Through Crusade

Through contributions to the United Medford Crusade, the Boy Scouts of America, now completing 50 years of service to boyhood, offer a year round program of character building, training in citizenship, and outdoor activity.

Since the establishment of the Crater Lake Council in 1924, it has grown from a few Boy Scouts to more than 4,300 Cub Scouts, Boy Scouts and Explorers. Not only has the Council had the highest membership of boys in its history, but also the largest number of Scout units with a total of 180.

**'Genius' of Scouting**  
The "genius" of Scouting has been the principle since 1910 to cooperate with the spiritual, educational, and civic institutions of America in promoting the ability of boys to do things for themselves and others. Boys are trained in Scoutcraft, taught patriotism, courage, self-reliance, and kindred virtues by placing emphasis upon the Scout Oath and Law.

Volunteer leadership is important to the Boy Scouts and the units. Without the trained staff, which support to the United Medford Crusade makes possible, volunteers could not function to bring the many benefits of Scouting to the youngsters in the Crater Lake Council.

### Respective Roles Of Man's Brains Subject of Study

Los Angeles (Science Service) — Every man has two brains — one right and one left.

Their respective roles and whether there is a relationship that may contribute to mental disorders is the subject of a research project being carried out by Drs. Benice M. Wenzel and Robert D. Tschirgi of the University of California Medical school, Los Angeles.

The two hemispheres of the human brain are not only extremely similar in structure, the investigators point out, but because of extensive interconnection may be very similar in function. This is probably why we have difficulty at times discriminating left and right.

**Behavior Compared**  
One approach to the problem has been to remove one brain hemisphere from experimental animals at birth and to compare their subsequent behavior and learning ability to litter mates whose brains were left intact. So far the animals have demonstrated no significant differences in behavior or learning ability.

It has been demonstrated elsewhere that the same procedure in adult animals resulted in marked differences. Animals with only one hemisphere, for example, could not walk a straight line but walked circles.

Human patients who have suffered severe damage to one side of the brain may demonstrate bizarre behavior. In some cases, for instance, they tend to lose awareness of the opposite of their body, grooming only one side of the body and letting the other remain unkempt. They are unable to touch the other side of the body, as if there were a barrier.

**Related to Disorders**  
All this suggests that complex interrelationships between the two hemispheres are established in the learning process. Disruption of these interrelationships or imbalances in their function may be related to mental disorders, it has been thought.

The research continues in search of clues as to how the roles of the "two" brains may be involved in normal and abnormal behavior.

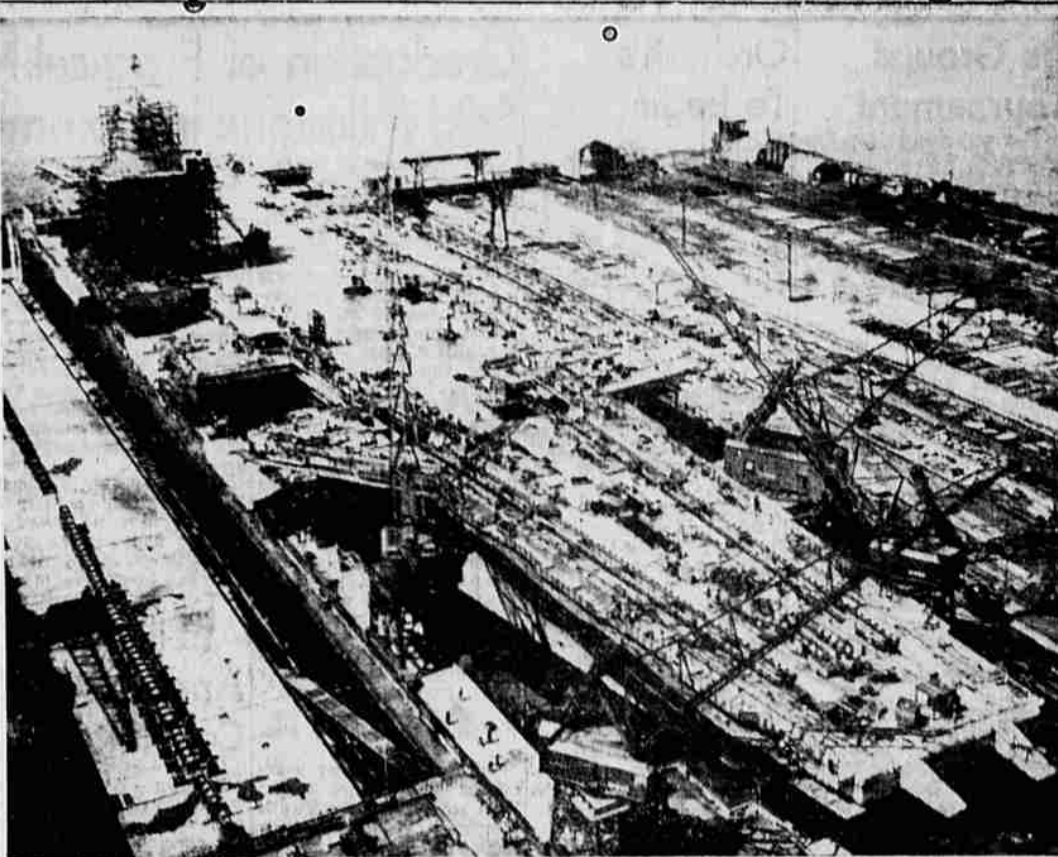
The project is being supported by the National Association of Mental Health.

### Two Appear in District Court

Johnnie Robbins, 903 West 11th st., Medford, has been bound over to circuit court on charges of non-support, district court officials said yesterday.

He was charged with failure to support two children, 3 and 1½ years old. He is being held in lieu of \$1,500 bail.

James Burl Isom, transient, was sentenced to 11 months and 24 days in the county jail for petty larceny by District Court Judge E. Roy Bashaw. Isom pleaded guilty to taking a pair of leather gloves and a safety razor kit from a local store.



**CARRIER NEARS CHRISTENING**—The huge nuclear aircraft carrier Enterprise is shown in her dock at Newport News, Va., as workmen prepare her for christening Saturday by Mrs. William B. Franke, wife of the Navy secretary. During the ceremonies the dock will be flooded and the world's largest ship will be completely afloat for the first time. (UPI Telephoto)

### Lesions Indicate Link With Cancer

Minneapolis, Minn. (Science Service) — A study of precancerous lesions has provided a new link between smoking and cancer.

Dr. Oscar Auerbach of the Veterans Administration hospital in East Orange, N. J., told the fourth National Cancer conference here. "In our studies, precancerous lesions have always been present in cases dying of lung cancer. Every one of these gave a history of having smoked. . . . In individuals dying of causes other than lung cancer with verified smoking histories available, similar changes are present."

The researcher said air-pollutants other than cigarette smoke seemed to have played only a minor role in the production of such lesions.

Mount Revelstoke National Park in British Columbia has a scenic highway that reaches an altitude of 6,500 feet.

### Don't Buy

Any New or Used Car Until You Check

**COURTESY CHEVROLET'S DEAL**

On Their Remaining New Cars, Demonstrators and Executive Cars

Private savings accounts in France increased by 30 per cent in 1959. East Pakistan's current food-grain deficit is about 1.6 million tons. Singapore is to have more water, through using resources of the Johore River.

# NOW! 2 kinds of Puss'n Boots



Each prepared with loving care for America's favorite pet Now—from Puss 'n Boots—comes a new meat flavored cat food . . . created with the same skill and knowledge that have made Puss 'n Boots Original Fish Formula the largest selling cat food in America.

There's a lot more to Puss 'n Boots New Meat Flavor than good red meat. Whole fish is included, for its rich supply of proteins, vitamins

and minerals . . . plus whole grain cereals with nutritional benefits similar to leafy vegetables in human food, and extra Vitamins B<sub>1</sub> and E.

Feed Puss 'n Boots regularly, once a day, every day—either the New Meat Flavor or Original Fish Formula. In three weeks or even less, you'll find your pet shining with health and beauty.

**Puss'n Boots**  
now 2 kinds



Coast Fisheries Division of the Quaker Oats Company, Chicago 54, Ill.



**-the coffee that's so good you can drink it hot as fire and black as night**

Maxwell House is good to the last drop.

A product of General Foods