

Neatness Dominates Neckwear Fashions

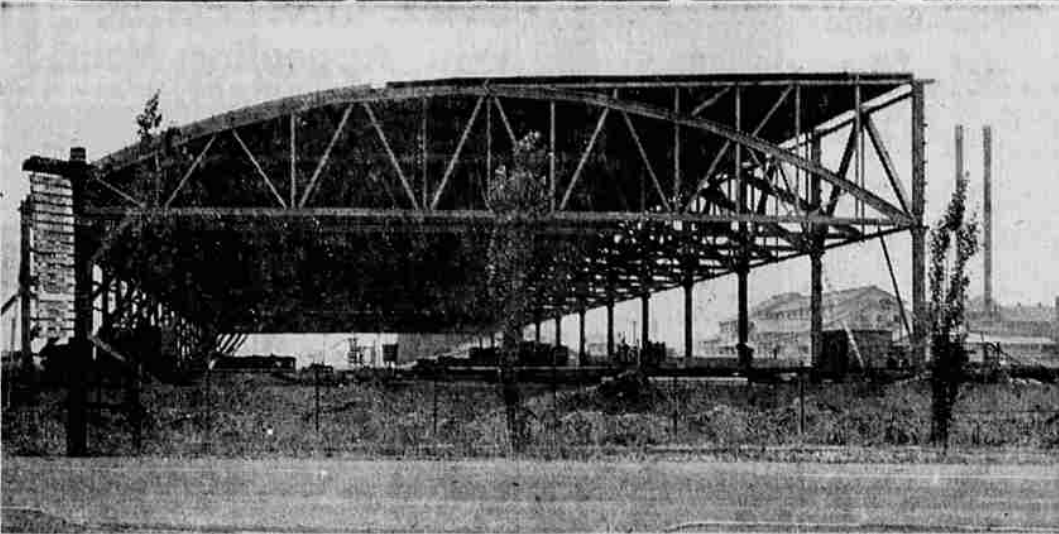
Neatness is the dominating theme in neckwear for Fall 1960. Even in the relatively few prints around, such as in traditional foulards and geometrics, the accent is on neat appearance and clean, fresh design. In the challis types, a fashion-conscious man can find neat interpretations of large paisleys, many "conversions" and interesting Persian block patterns.

In stripes there are bright flashes of color and a revival of the "smoky" tones.

In the woven category, there are many textured effects, resulting from interesting jacquard treatments. There are also handsome under-the-knot accents and center panel effects.

Color news in the new season neckwear stresses a new "frosted look," many light blue and silvery tones, olive and gold-in combination or separately—and the new "vintage" colors popping up all over the place in flashes of purple.

One intriguing note is that because of the great popularity of tab collar shirts, narrower ties—some measuring only 1 1/2 inches—are getting a comparatively good play.



NEW PLYWOOD PLANT—The picture above shows progress on the new Medford Corporation plywood plant being constructed along Highway 99 just south of the company's office north of Medford. The plant is expected to be in operation next year with the plywood being distributed by U.S. Plywood Corporation, one of the nation's largest distributors.

Pencil-Slim Toe Declared Latest In Fall Fashion

Sharply pointed shoes taper to a pencil-slim toe in this fall's newest styles. The whittled look in dressy, casual and day wear.

Pumps, spectators, flats, casuals and even moccasin type leisure wear show sharply pointed toes, reports Shoe Fashion Service of Leather Industries of America.

There are varying interpretations of the pointed toe, ranging from the "single" needle—moderately tapered—to the high-fashion quadruple needle or "missile toe" that measures a bare quarter of an inch at the toe tip.

Suede, brushed leather, lustered, smooth and grained leather shoes are molded to modified or acute "missile toes" to go into orbit around the world of fashion.

While the "outer space" of the new shoes is held to a fine line, new scientific tanning methods result in ultra-flexible leather that enables shoes to make their fashion point without sacrificing foot comfort.

Many new pumps feature cut-out, and cut-out effects achieved through complementary color underlays. Contrasting textures make news in casual shoes with special detailing on vamps and shanks.

Many styles have draped, pleated and perforated fronts to accent the narrow toe silhouette.

Both texture and color interest are evident. Luster leather is seen in mauves, purples and magentas for evening wear. Evening pumps in soft crushed leather finishes appear in antiqued gold and bronze, to accent elegant dresses for special occasions. Brown is in a leading color position in daytime pumps, casual moccasins, walking shoes.

Very high heels write a new fashion note in pencil-slim beauties that rise to three and a half inches—a half-inch higher than the popular "spike" dress heel. Both casual and suit shoes stand on mid-heels of stacked leather.



SILHOUETTE—Needle toe, a leading fall silhouette in feminine footwear, is illustrated by this violet smooth leather pump for late day and evening wear. Shoes by Customcraft.

Aristocratic Ideas For Fabrics Seen

Fabrics have aristocratic ideas for fall. Woolens, silks, the man-made wonder fibers and cottons excel in quality, presenting a distinctive, distinguished appearance.

Elegant woolens impress the eye with dimensional textures and airy weaves, often enriched by mohair loops or slubs. Last season's success with worsted ottoman stimulates the liking for ribbed and corded weaves, with many herringbones and twills added. Rich-looking gabardines make a strong showing, especially in smartly tailored dresses.

Knits are everywhere, and in every texture—brushed, homespun, lacy, smooth and languid. Others reflect the look of fall's handsome rustic tweeds.

Dressy woolens include pebbly crepes and sheer, eye-catching textures. Wool prints gain new importance in dresses for the festive hours.

An aura of luxury emanates from fur blends, lustrous velours, wool chinchillas, camels and cashmere. Gleaming silks for all hours and brocades and metallics for evening continue in the luxurious vein.

Man-made fibers, cottons and blends achieve new elegance. The wonder fibers for example, realistically copy the look of silk and cottons and blends are styled like fine quality wools.

Taking note of the fact that there's a lot of warm weather in the fall, fashion presents many more cottons. Comfort is furthered by the prevalence of wash and wear qualities—achieved with or without synthetics blended in.

The Family Council Lightweight Shoe Popular for Fall

Editor's Note: The Family Council consists of a judge, a psychiatrist, three clergymen, three editors and a women's editor. Each article is a summary of an actual case history. The Council reports on problems that have been dealt with by responsible agencies and counselors.

Mark J.—She started it—now I want a divorce.

Natalie J.—Is it too late to start again?

Mark J.—My wife and I are in our late 40s and have been married nearly 20 years. We have two teenage youngsters. About ten years ago I learned that Natalie had been unfaithful to me with more than one man. She suggested that I go ahead and follow her example—as long as we didn't break the home. She wanted us to remain together for the children's sake.

After several years of living this way, I have at last found a woman I love very much. We want to get married and establish a decent life. Natalie refuses to grant me a divorce. But I feel the way we are living is intolerable.

Natalie J.—I told Mark the score in the beginning. I never had the slightest intention of destroying our home. I certainly don't want to do it at this time—when our daughter is just 16 and needs a home.

I realize I have been the one at fault in this situation.

There's a new "high-light" flashing across the men's wear fashion scene this fall. It's a higher cut, lightweight leather shoe for dress wear, reports Shoe Fashion Service of Leather Industries of America.

Generally tapered to a finer point, in keeping with the slim lines of this year's Ivy and American Continental suits, these shoes are available in dozens of different style interpretations in smooth, grained and even brushed leathers.

An extension of the "more shoe" look which has recently characterized American male footwear fashion, these new styles remain light foot. Most often found as a slip-on.

of a home for the children. Perhaps she is now ready to give her love fully. She must then find a way of expressing it.

We agree with Mark that life under the present conditions is intolerable. We can only urge him to put an end to his extramarital attachment and make the effort to find emotional contentment with a wife who has gained some wisdom through sad experience.

(Copyright 1960, General Features Corp.)

they use elastic gores to keep the shoe snugly on the foot. They are available in an extended range of blacks, browns and burnished olive. The greener tones and the combinations of black with brown complement fall's glea plaids, worsteds and tweeds.

The trend to slimmer silhouettes in men's shoes continues in three-eyelet dress bluchers, slip-ons and stylized wingtips. More pointed toes are seen in bluchers and hal oxfords this fall. Moccasin fronts, increasingly popular this year, also show tapered influences. In the main, though, moc-toe shoes remain fairly rounded or squared off.

In casual shoes, the slip-on is most often seen. Brushed and smooth leather shoes are most popular in casual styles, although a number of leisure type shoes are available in deeply etched grain leathers.

Ankle-high chukkas are a favored fall shoe for week end knocking-about. Loden green, charcoal brown and slate are among the more popular colors in chukka boots.

PICK PLUM

Plum is newest fall color for girls' fashions. Brassy green, warm browns, smoky blues are more news.

The new fall season is **BIG**

For Values on **VIKING**

The World's Most Perfect Free Arm Automatic Sewing Machines

100% Jam Proof

Pickup and Delivery

- Parts and Service
- Guaranteed Service
- Pay Where You Buy

SEWING MACHINE CENTER

10 S. Central SP 2-2388

3 VALUE-PACKED DAYS!

HARVEST of VALUES!

Reap BIG SAVINGS! Take a look at these Money-Saving Specials during our 3 VALUE-PACKED DAYS OF VALUES!

SPORT OXFORDS AND BOOTS \$3.99 PAIR

Pick's SHOES

If Your CREDIT is GOOD It's GOOD At PICK'S!

102 East Main Street

Pick's APPAREL **3 VALUE-PACKED DAYS!** THURSDAY, FRIDAY and SATURDAY

HARVEST DAYS of VALUES!

We've a Harvest of Quality Merchandise... PRICED SO LOW... you'll want to reap in lots of savings! DON'T MISS THESE VALUE-PACKED BUYS!

BOUFFANT Petticoats

All Sizes Values \$2.99

4.98 to 6.98

FAMOUS BRAND LINGERIE SLIPS Nylon Tricot—Some Colors but Mostly White

Sizes 32 to 40, but not all sizes in each style. Values to 8.98

\$2.99 and \$3.99

NEW FALL WOOL Skirts

- Reversible Styles
- Pleated Skirts
- Box Pleated Skirts
- Unpressed Pleated Skirts
- Slim Skirts
- Plaids
- Tweeds
- Solid Colors
- Sizes 8 to 18

Values 9.98 to 19.98

HARVEST DAYS VALUES

Pleated Skirts...\$8.80

Corduroy Capri Tapered Leg Slacks

\$2.99

\$4.98 Value

CLAM DIGGERS or PEDAL PUSHERS

If you don't like the fitted leg... THESE ARE FOR YOU!

Sizes 8 to 20 Reg. 4.95

\$2.99

HARVEST DAYS

NEW FALL FUR BLEND Sweaters

- Pull-Over Styles
- Cardigan Styles
- All New Fall Colors
- Fancy Styles
- Plain Styles
- Sizes 36 to 42

Gray, Spruce Green, Turquoise, Nutria Gold Mist

Values 9.98 to 11.98

HARVEST DAYS VALUES

Cardigan Styles...\$7.70