



**NEW ROLLER RINK** — Providing a place for entertainment and exercise for valley residents will be this roller skating rink being constructed on Highway 99 south of

Medford. It is one of several recently completed buildings for recreational purposes. Others include new bowling lanes in Medford and Ashland.

## Five 'Big-Name' Fashions Appear During One Season

Five big-name performers head the cast in the men's style story for Fall 1960 and, says the American Institute of Men's and Boy's Wear, it's the first time that as many as five basic styles have appeared in any single season, all at once.

New to the cast and beginning to perform like a seasoned trouper is the Trans-American model—a crisp, handsome compromise between the American Continental, with its smart, sophisticated rounded coat fronts, and the conservative American Natural. The Trans-American's lines are straight, the fronts slightly rounded, the back is plain with no vent, the pockets double piped. Two and three-button models are available.

Trimmer than ever, the Continental flatters the American man with its slimming lines—handsomely tapered waist, narrow lapels, tapered sleeves. Slim, too, are the trouser lines which carry a single pleat, angled pockets and no cuffs.

**'Ambassador' Popular**  
Continuing in high favor, the California-inspired American Ambassador presents its silhouette of long, tapered coat lines, its roomy athletic look.

The nation's all-time favorite, the front-running American Natural is showing some signs of Continental influence—but it's still the conservatively smart suit it always was.

American Ivy returns to its classic best this season with such novelties of the past as flapped hip pockets and buckled back straps on trousers going into oblivion.

Smart shoppers will also note the growing trend toward wider use of vests, both matching and in contrasting colors.

All in all, this five-star season presents more action and greater variety than any autumn within recent memory. This goes for fibers and fabrics, colors and patterns, too. Suitings have never before been so handsomely colored

and attractively designed. Olive greens are strong this Fall, solid or compounded in heathery mixes of blues, russets, yellows, grape and black.

Bolder patterns come to the fore in both glen plaids and checks, not just in suits but in sports jacket and slacks combinations also. These accents along with certain styling details may denote the beginning of more of an influence of things British. This trend may gather momentum.

**Continental Impact**  
The American Continental style is having wider impact on topcoats this Fall. One result is new, shorter lengths, for greater comfort in walking and motoring. Another new detail shows up in full-peaked and semi-peaked lapels—in both single-breasted and double-breasted models.

A casual note finds expression in the full sweep of the split raglan coat with angle-flap pockets. Conservatives will go for American Natural boxcoats with notched lapels and flapped pockets. And

Prints—big and small—are important, including batik and heraldics. Other new woven range from district ideas to madras-type plaids, as well as some new striped ideas. Fabrics indicate much more interest in textures. This is reflected in burly-weave hopsacks, herringbone and hopsack weaves, oxfords in twill, and subtle-slubbed effects in cotton-plus blends.

Textures are also an important factor in new knit shirts. There are many dimensional treatments, some bulky-look treatments, crocheted-looking stitching, etc. Classic ideas have been given a new look via sweater colors. Patterns are as varied as they are handsome, and include yoke stripes and panel stripes.

## Elegance Noticed In Men's Shirts

There is an elegance about men's shirts this fall that can't be denied. In all ways, the direction is toward subtlety, restraint and good looks.

For example, because of the heavy emphasis on patterning in new fall suits, the colors and designs in new shirts tend toward the conservative. Stripes, while heavily represented, are more widely spaced and in lighter colorings. Colors, generally, feature "a hint of hint"—in gold, maize, ivory, olive, taupe and a sprinkling of pink.

Collars, too, pick up the accent of elegance in such new shorter button-downs and non-flare button-downs. The tab collar is extremely important and is featured this season in angled or cutaway tabs, as well as blunt or rounded ends.

In cut-and-sewn sports shirts, traditionals are treated to a variety of new colorings, prints and fancy touches—such as fly fronts, engineered panels, embroidered accents—in good taste.

Prints—big and small—are important, including batik and heraldics. Other new woven range from district ideas to madras-type plaids, as well as some new striped ideas. Fabrics indicate much more interest in textures. This is reflected in burly-weave hopsacks, herringbone and hopsack weaves, oxfords in twill, and subtle-slubbed effects in cotton-plus blends.

Textures are also an important factor in new knit shirts. There are many dimensional treatments, some bulky-look treatments, crocheted-looking stitching, etc. Classic ideas have been given a new look via sweater colors. Patterns are as varied as they are handsome, and include yoke stripes and panel stripes.

## Jackets, Trousers, Vests Top Sports, Leisure Wear

Headlining new trends in sports and leisure wear for Fall 1960, casual jackets team up with matching trousers and vests, too, to make time-off a "dress right" affair.

Checks, plaids, hounds-tooth and a variety of other patterns traditional with leisurewear jackets are all pointed up in these new, three-piece ensembles that make their bow.

In combination with slacks or matching trousers, the season's sport jackets focus on two standout models—those with Continental features and others with natural shoulder and other familiar treatments.

Slacks are marked by fewer tricky tailoring details this Fall, but the consensus is they are the smarter for it. In fact, slacks are reflecting the same tasteful treatment you find in suit trousers right down to the subtler patterns and compound colors in business ensembles.

**Slim-Legged Look**  
Making a big style dent in slacks is the Continental influence, which introduces dropped Western pockets and tunnel elastic self-supporting waistband features. All are note-worthy for their slim-legged look. In addition to solids, look for them in glen plaids, checks, and madras fabric designs.

The all-American male look comes into its own in the season's new outerwear that fairly shouts an invitation to get out and enjoy the tawny Fall air.

The variety is fabulous. New longer lengths vie with three-quarter lengths in outerwear that features single-breasted and double-breasted models. In addition, hip-lengths and waist-long models abound.

As for fabrics, they range all the way from madras-plaid wools to cotton blends and corduroys. Watch for such outer garment luxury as fur-type pile shawl collars

and fur linings or linings in brilliant hued downy wool, bulk knit treatments, so-called umbrella fronts and back yokes, floating shoulder details that make for easy arm motion, slant flap pockets and front fastenings in a superb variety.

Outerwear colors are for crisp and bright Fall days, too—olives and golds, russets and wines among them.

In sweaters there is no favorite like the old bulky-knit favorite. Bulky knits are top liners this season, along with traditional cardigans and pull-over with crew necks. V-necks cross-over boat necks, turtle necks and many more. Cardigans, by the way, appear in six-button front models, with shawl collars.

**Bold Shirt Colors**  
There's a riot in sports shirts for Fall 1960—a happy riot to be sure. Bold colors, off-beat colors and mixtures of the two. Bold pattern treatments, too.

Among the popular weaves for the season are oxfords, herringbone and hopsacks, featured in solids and prints. Some have stitching that resembles sweater knits.

Other features to check in the sports shirt range include collared knit models, engineered "scarf" prints molded into shirt fronts, and novel embroidered motifs accenting collars, cuffs and pockets.



# HUGE PRE-INVENTORY

## Warehouse and 2nd Floor SALE

Just in Time for Medford's HARVEST FESTIVAL!

**NOTICE**

Due to the additional dollar and space investments required for our new, dramatic PALAZZO group, we are forced to liquidate \$25,000 inventory by Oct. 1. Many items priced far below cost! Savings up to 75%. Most items are one-of-a-kind — Shop Early for best selection!

**Sofas—Sectionals—Must Clear!**

|   |              |   |              |
|---|--------------|---|--------------|
| Example:<br>Charcoal Brown Sofa—Reg. \$399.50<br>Save \$200.00..... | <b>\$199</b> | Example:<br>Blue Quilted Loveseat<br>Reg. \$499.50.....           | <b>\$269</b> |
| Example:<br>Large 3-Piece Turq. Sectional<br>Reg. \$599.50.....     | <b>\$459</b> | Example:<br>Danish Modern Sofa—Reg. \$169.50<br>Save \$79.50..... | <b>\$99</b>  |

White, Twin Size PROVINCIAL BEDROOM SUITE  
**\$399.50**  
to  
**\$269.00**

5 PC. MAPLE DINETTE SET (Formica Top)  
Reg. \$199.50  
**\$120**

1 Only—Oak BAR STOOL  
Reg. \$24.95  
**\$9**

SALE ENDS FRIDAY, SEPT. 30th at 5:30 P.M.

**CHAIRS & ROCKERS SACRIFICED**

|   |             |   |              |
|---|-------------|---|--------------|
| Example:<br>SWIVEL ROCKERS<br>Reg. \$159.50 | <b>\$99</b> | Example:<br>Beige Quilted Lounge Chair and Ottoman<br>Reg. \$299.50 | <b>\$199</b> |
|---|-------------|---|--------------|

18x27 Discontinued CARPET SAMPLES  
Values from \$5.95  
**59c**

4 PC. MAPLE BEDROOM SUITE  
Regular \$269.00  
**\$175**

FULL SIZE MATTRESS  
And Box Spring  
Reg. \$159.50  
**\$99**

SORRY, DURING THIS SALE NO REFUNDS OR EXCHANGES

**CLEARANCE OF LAMPS!**

|                      |       |      |
|----------------------|-------|------|
| 10—Values to \$34.95 | ..... | \$10 |
| 8—Values to \$39.95  | ..... | \$20 |
| 6—Values to \$54.95  | ..... | \$25 |

MANY OTHERS AT TERRIFIC SAVINGS

**9-PC. DINING SUITE**  
Regular \$887.50  
Save \$288.50.....  
**\$599**

**CARPET Partial Rolls and Remnants**

SAVE UP TO **75%**

PRICES SLASHED ON **48 OCCASIONAL TABLES**

|   |             |  |             |
|---|-------------|--|-------------|
| EXAMPLE<br>WALNUT END TABLE—<br>Reg. \$39.95..... | <b>\$10</b> | EXAMPLE<br>SOLID CHERRY BUTTERFLY TABLE<br>Reg. \$49.95..... | <b>\$20</b> |
|---|-------------|--|-------------|

2 Only... Maple Nite Stands  
Reg. \$39.95 each  
**\$10 Ea.**

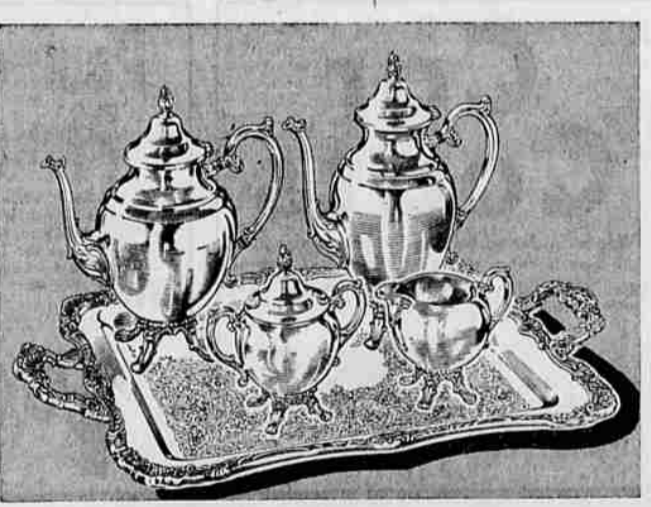


220 North Bartlett  
Next to Greyhound Depot

It's from **Brophy's Medford**

Serving Southern Oregon and Northern California for Over 30 Years

## Harvest Festival Special



### 5-pc. Tea and Coffee Set

BEAUTIFY YOUR HOLIDAY TABLE WITH THIS MAGNIFICENT BUT LOW PRICED SET

**\$69<sup>95</sup>** Fed. Tax Incl.

Set includes 9 cup coffee pot, 9 cup teapot, sugar, creamer and tray, all at a sensational low price!

Made by The International Silver Co.



For the Silver You'll Give With Pride... Let Brophy's Be Your Guide



**BROPHY'S JEWELERS**  
MEDFORD, OREGON  
Quality Diamonds Honestly Priced for Over a Quarter of a Century

**PAINTING**

**FALL HARVEST SPECIALS**

**RUBBER BASE WALL PAINT**  
TOP GRADE **\$4.29** Gallon

**ALKYD SEMI-GLOSS ENAMEL**  
TOP GRADE **\$5.10** Gallon

**BARN & FENCE WHITE PAINT**  
**\$3.39** Gallon

**FIREPLACE SCREENS**  
Clamp Mounting Type **15.95**  
We Give S&H Green Stamps

**FLOYD HIBBARD'S HARDWARE**

310 East Main Street • Phone SP 2-2113