

Student Visiting Alba, Italy, Answers Questions About City

Editor's note: This is the second of two letters from Greg Milnes, who is representing Medford in its sister city, Alba, Italy, this summer. Milnes, along with Jim Busch, Ashland, is touring Europe by car and has agreed to visit Alba on behalf of Medford and send back information regarding that city. Milnes will be a senior at Willamette university this fall.

By GREG MILNES
Alba, Italy—Here is the first in a series of reports dealing with Alba, Italy. I will try to list subjects as I have them on my question sheet prepared in Medford.
Radio Stations—None here in Alba, but they (Alba) are covered by stations in Turino, 40 miles to the north. The ra-

dio stations are all owned here but do accept advertising for a fee just as Medford. There is also a national tax on radios and TV sets in the home.
TV Stations—None in Alba but coverage (comes) from Turino, a city of some 700,000 people. This, too, is state owned with advertising allowed and taxes on sets in the home. I noted a great many TV antennas here in Alba. Apparently the quality of programs and transmission is very good.

Italy is one of the leaders in the movement towards a European network of stations linked by micro-wave. The television stations here have been running a series of programs dealing with the history of the Olympics and also information about the athletes

who will compete in Rome this year.
Parochial Schools—None in Alba. All schools are run by the government which would be like our system in Medford. There are three or four Catholic kindergartens, but no church schools. For information on education write: Sandra Gillio, Via Coppa No. 2, Alba, Italy. She is our interpreter and the English teacher in our high school.
Colleges—There are none in Alba but very fine schools in Turino and Milan. There is one Catholic seminary here. Many students from Alba go to college.
Mayor—Orlando Cagnasso, a man of 65 or so. He is very dynamic and active—a widower with six children, all grown. He is the partner in a

food stuffs firm. His job as mayor is a full-time job. He is a very respected man by all and it is said he has changed the city into a progressive community.
The city is still dependent on agriculture (wine, truffles, grain, corn) but also they now have some industry (paper, vermouth, textiles, chocolate, biscuits, etc.).
City Government Structure—Mayor-council type—no city manager. (They have a 30 member lower house elected by the people from party representatives. There are three Communists here but they are not able to gain much power and are not too verbose or troublesome. They are a social and economic type of Commu-

nist and not sympathetic with the Soviet Union.
These 30 members select a mayor although the people can bring a great deal of pressure to bear here. This group (the municipal council) chooses six men to serve on the upper house or Judicia council. The 30 members propose legislation and the six approve it. Meetings are held weekly and public. They meet in a very old council chamber with a similar physical set up as Medford—with a public gallery.
(Mayor John Snider has received a letter from Richard Oakland, director of town affiliations in Washington, D.C., in which Oakland assesses the Alba political situation. Oak-

land says: "the entire area surrounding Alba has been predominantly Christian Democratic for some time. In the 1953 elections, 5,000 votes were cast in Alba for the Christian Democratic party. The next largest party was the Monarchist which received 1,000 votes and the rest of the votes were split among the various other parties with none receiving more than a hundred.")
Newspapers—They have a weekly printed here in Alba by Catholic priests called "Gasette d'Alba." They also have a Cuneo province page in the large daily from Turin, "Gasette del People."
I will find out more later and send additional reports.

Officers Stumped In Hunt for Girl

Eugene—(UP)—Lane County sheriff's officers have admitted they were "at a dead end" in their efforts to find missing 7-year-old Alice Louise Lee.

The admission came after more than 140 officers and scouts Friday night ended a second fruitless search of the mile-square area surrounding the Dexter bean field where Alice disappeared 11 days ago.
The searchers—fingertips touching in a line 450 yards long—started combing the heavy undergrowth of the area at 5:30 a.m. The search was called off late in the afternoon.

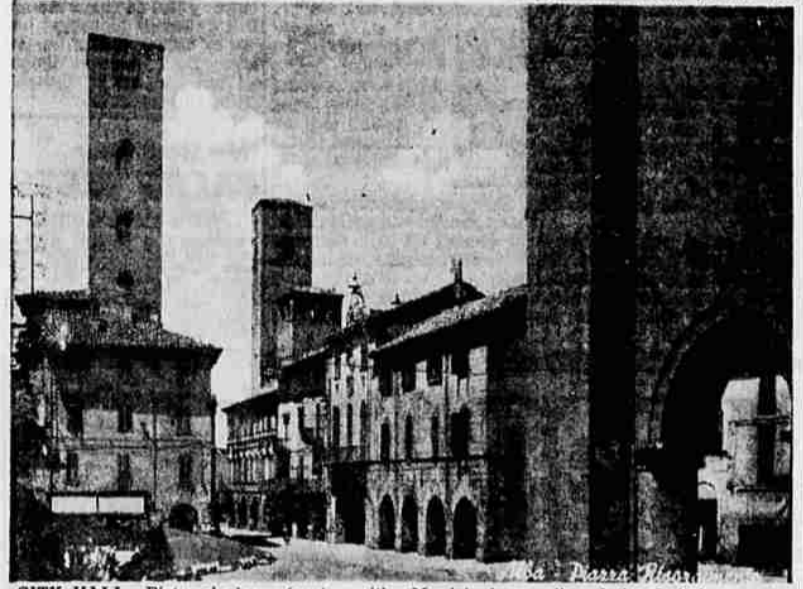
BOUND FOR PARIS
Warsaw—(UP)—Mrs. Eleanor Roosevelt left Warsaw for Paris Sunday after she attended the general assembly of the World Federation of Nations association here, the Polish news agency PAP reported.

PASS THE PILLS
Los Angeles—(UP)—Two British youths touring the United States, Charles Dick and Roger Brittain, have reached this conclusion from watching TV commercials: "Apparently everyone in America has a bad stomach."

School Pencils Imprinted
Send Them Off With Their Own Personalized Pencil

Gift Box of One Dozen	1.19
Plastic Case of One Dozen	1.49
Jumbo Pencil Case of One Dozen	1.49

Swem's Books—Gifts—Records
217 E. Main Medford



CITY HALL—Pictured above (center with the clock) is Alba, Italy's city hall. Greg Milnes, who visited Alba this summer as Medford's official representative to its sister city, toured this building and said Alba's equivalent to Medford's city council holds weekly public meetings there. Alba's city government is comprised of two houses (The Municipal council and the Judicia council) and a mayor. The Municipal council is comprised of 30 elected members who choose the mayor and also pick six men to serve on the Judicia council. The Municipal council proposes legislation and the Judicia council ratifies it.

PLAN NEW BUILDING
New York—(UP)—Plans have been announced for a \$3.5 million building, two blocks from the United Nations Building, to serve as a new national headquarters for the Protestant Episcopal church in the United States. The building will be 12 to 14 stories high.

Wall Street Chatter
New York—(UP)—The electrical equipment industry is now in a cyclical decline with large inventories, weak product prices and slimmer profit margins, according to the Value Line Investment Survey.
The survey says that although recent production cutbacks are expected to rectify the inventory glut by the year-end, overall economic prospects do not suggest that 1961 will usher in improved demand for consumer durables.
Reynolds & Co. comments on the effect that the rise of the American male compact car may have on steel. Estimates indicate, it says, that the average amount of steel required in all cars produced in the U.S. this year will be 1.86 tons. This is less than the 1.90 tons per car in 1957 and 1.95 in 1958 but still compares favorably with the average for the preceding two years—1.83 in 1955 and 1.85 in 1956.
Bache & Co. reports that both Ford Products and DeSoto & Ford continue to display outstanding market action and further short term gains seem likely. Bache also suggests Windsor Industries only for trading accounts willing to assume a high degree of speculative risk.

ON UNITED... MOST JETS SOUTH ONLY JETS EAST

JETS LEAVE PORTLAND FOR LOS ANGELES
12:50 p.m.
5:45 p.m.

FOR SAN FRANCISCO
5:45 p.m.

FOR CHICAGO, NEW YORK
10:30 a.m.

FOR RESERVATIONS, First Class or Custom Coach, call your Travel Agent or United Air Lines. SPring 3-6233.

Homecoming Plans At U of O Start

Eugene—The University of Oregon 1960 Homecoming week end will be held Oct. 14, 15 and 16.
"Join the Bandwagon, Back to Oregon" will be this year's theme.
On the Saturday, Oregon faces Washington State, and an aftergame reception will be held in honor of Acting President W. C. Jones.
Internationally-known pianist and recording star Roger Williams will give a concert Saturday evening, and music for dancing will be provided by Buddy Morrow and his orchestra.
Chairmen for the occasion are Patti Cleggett, Salem, general chairman; Janice Smith, Eugene, general secretary; Gayle Osburn, Salem, publicity; Lynn Wheeler, La Grande, finance; Barbara Chaniry, Seattle, dance; Robert Warr, Portland, music parade; Mary Alden, Albany, button sales; Jean Harn, The Dalles, traditions; Sue Palmer, Portland, bonfire; Ronald Maddy, Salem, halftime and rally.
London—(UP)—Sir Harold Gillies, 78, internationally known plastic surgeon, died Saturday. One of his most noted operations was on ex-King Leopold of Belgium in 1935 when Leopold suffered face injuries in an automobile crash. He operated on about 10,000 war-injured soldiers to mend facial disfigurements.
Campione, Italy—(UP)—Three dapper bandits robbed the local gambling casino early Sunday and escaped with more than \$400,000.

SAVE NOW DURING OUR BIG ANNUAL

Groceteria THE PLACE TO GO FOR THE BRANDS YOU KNOW

STOCK UP! NEW PACK

Canned Goods SALE

LOTS OF FREE PARKING
We give the best—THRIFTY GREEN STAMPS

SUMMER STORE HOURS: Open every night until 9 P.M. seven days a week.

Groceteria PRODUCE
GOOD OR YOUR MONEY BACK. YOU ARE THE JUDGE.

Sunkist California Grapefruit

6 for 39¢
48 SIZE

California Table Grapes
YOUR CHOICE
Black Ribier
Muscat
Lady Fingers

Local Fresh Cut Cabbage 5¢ lb.
Raised in Central Point on the Beebe Farm. Cut fresh daily.

If you're not shopping at the Groceteria you're paying too much!

BACON
Thick Sliced
Armour Star
2-lb. Pkg. **\$1.09**

Fresh Chicken Parts

Breasts	89c lb.
Thigh & Drum Sticks	79c lb.
Necks & Backs	19c lb.
Wings	45c lb.

WE ALSO HAVE FRESH CHICKEN LIVERS AND GIZZARDS

CANNED VEGETABLES

	Regular Price	1/2 Case 12 Cans	Case of 24 Cans	You'll Save
Asparagus Del Monte E. G.	300 Can	39c	3.98	7.95 1.41
Asparagus West Crest All Gr.	300 Can	3/1.00	3.50	6.85 1.15
Chili Beans Hunt's	2 1/2 Can	27c	2.90	5.69 .79
Cut Beans Wilamet	303 Cans	2/33c	1.90	3.69 .27
Cut Green Beans Diamond A	303 Can	20c	2.33	4.55 .25
Sliced Green Beans Diamond A	303 Can	23c	2.55	4.98 .50
Diced Beets Diamond A	303 Can	2/29c	1.50	2.95 .53
Sliced Beets Diamond A	303 Can	2/35c	1.90	3.65 .55
Sliced Beets 3 Sisters	303 Can	2/29c	1.50	2.95 .53
Cream Corn Kounty Kist	303 Can	2/31c	1.70	3.25 .47
Cream Corn Diamond A	303 Can	2/35c	1.95	3.79 .41
Whole Corn Diamond A	303 Can	2/35c	1.95	3.79 .41
Whole Corn 3 Sisters	303 Can	17c	1.80	3.49 .59
Peas Del Monte	303 Can	22c	2.45	4.79 .49
Sauerkraut Del Monte	303 Can	19c	2.05	3.98 .58
Spinach Del Monte	303 Can	2/33c	1.70	3.39 .57
Stewed Tomatoes Hunt's	300 Can	2/39c	2.15	4.25 .43
New Potatoes Hunt's	300 Can	2/27c	1.35	2.59 .65
Corn Del Monte Cream Style	303 Cans	21c	1.99	3.98 1.06
Peas Tastewell	303 Cans	2/29c	1.49	2.98 .50

CANNED FRUITS

Applesauce North Coast	303 Can	17c	1.75	3.49 .57
Apricots Del Monte Halves	303 Can	29c	3.15	6.19 .77
Apricots Hunt's Whole	2 1/2 Can	31c	3.25	6.39 1.05
Fruit Cocktail Del Monte	303 Can	27c	2.80	5.49 .99
Fruit Cocktail Hunt's	300 Can	25c	2.50	4.98 1.02
Grapefruit Sections Del Monte	303 Can	27c	2.85	5.59 .89
Cling Peaches Hunt's (Halves or Sliced)	2 1/2 Can	30c	2.95	5.89 1.31
Freestone Peaches Del Rogue	2 1/2 Can	3/1.00	3.75	7.35 .65
Freestone Peaches Del Rogue	303 Can	23c	2.50	4.89 .63
Bartlett Pears Del Rogue	303 Can	27c	2.95	5.79 .69
Bartlett Pears Bisklyou (Light Syrup) No. 1 1/4 Can		21c	2.40	4.49 .55
Peaches Del Monte Cling (Halves or Sliced) No. 2 1/2 Can		33c	2.98	1.49 1.97

CANNED JUICES

	Case of 12 Cans	You'll Save
Tomato Juice Hunt's	46-oz. Can 29c	2.95 .53
Tomato Juice Hunt's	32-oz. Can 23c	2.29 .47
Pineapple Juice Honolulu Lady	46-oz. Can 3/89c	2.98 .58
Grapefruit Juice Del Monte	46-oz. Can 41c	4.25 .67
Orange Juice Del Monte	46-oz. Can 49c	5.39 .49