

### Weather Plane Hits Mountain

Tokyo - UPI - A U. S. Air Force weather reconnaissance plane carrying 11 crewmen, crashed into the side of a mountain 100 miles north of Tokyo early today and reports from the scene said there were "no survivors."

The bodies of 10 of the air- men were recovered by an Air Force rescue team. The 11th was not found.

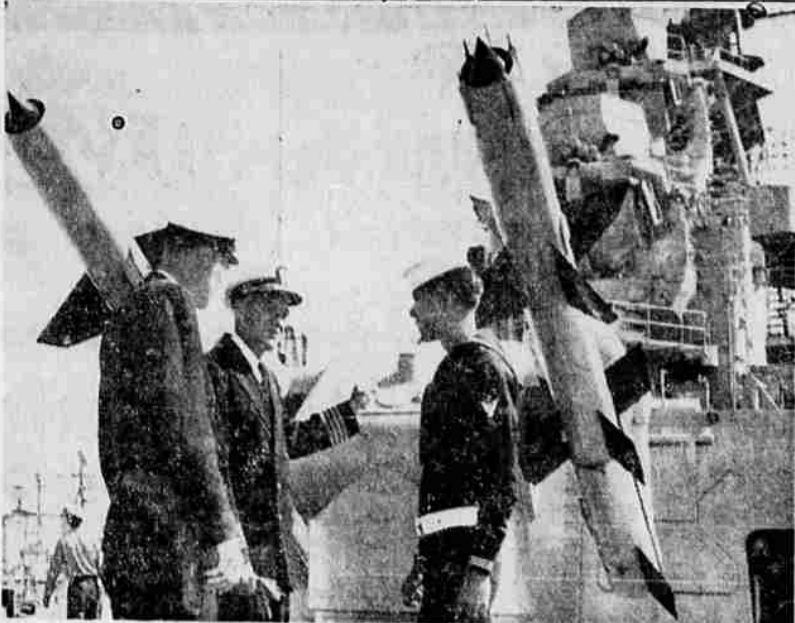
Names of the crew members were withheld pending notification of next of kin.

The plane, a WB50 assigned to the 56th Weather Reconnaissance squadron at Yokota Air Base, took off from Yokota on the outskirts of a weather mission.

About an hour later, the aircraft plowed into the side of a mountain six miles east of Ishikawa.

### DOESN'T FEAR APPLES

Dallas, Texas - UPI - A fancy sign displayed in the office of Dr. Hubert Hawkins says: "We aren't afraid of apples."



**NEWEST MAN O' WAR**—The USS Oklahoma City, the nation's newest missile-age man o' war, was shown off by the Navy at San Francisco. Above, signalman Wilfred Freeman, left, and Philip Bill, right, look over the vessel's new armament with Capt. Ben Sarver. The Oklahoma City is the third in line of missile-armed cruisers to join the fleet and is armed with a dual Talos surface-to-air supersonic missile launcher. The ship was commissioned Thursday. (UPI Telephoto)

### Appling Asks for Multnomah Move

Salem - UPI - Secretary of State Howell Appling Jr. said Wednesday he has asked Multnomah County District Attorney Charles Raymond to take legal action "if the facts warrant" on the nomination of Clifford Nelson for Multnomah county district judge.

Appling said an investigation had indicated that attendance lists were falsified for the convention which nominated Nelson for the position.

The secretary of state said he had asked Raymond to "take such action as may be necessary to develop the facts, and if the facts warrant, to have them adjudicated in a court of law."

Appling said he had "grave doubts about the soundness" of an opinion by Attorney General Robert Y. Thornton that the secretary of state lacked authority to interfere in the case.

"My only interest," Appling

### Hyatt Lake Tracts Offered for Rent

Portland - Availability of five tracts of land for leasing under the Small Tract act have been announced by Russell E. Getty, state supervisor of the bureau of land management, Portland.

Size of the tracts vary from .71 to .88 of an acre and lie on the east shore of Hyatt lake, about seven miles north of Greensprings summit in eastern Jackson county.

Rental of each lot, remote from city schools, stores, and other facilities, has been set at \$82 per year. Domestic water may be developed by wells. Rural schools and country stores are available within a radius of 10 miles, according to Getty.

Information concerning the tracts may be obtained from the district manager, 1133 South Riverside ave., Medford.

### They'll Do It Every Time



## Interior Department Submits 52-Year Conservation Plan

Washington - Project Twenty-Two, a 52-year program for conservation of the resources administered by the bureau of land management, has been submitted to Congress, according to Secretary of the Interior Fred A. Seaton.

He explained that the Twenty-Two title came from the target date of completion, the year 2012, the 200th anniversary of the bureau.

Seaton said the project is designed to conserve and improve the natural resources on public lands during a period when demands for them will become increasingly competitive.

**Balanced Program**

"In developing this balanced program," Seaton said, "we have recognized the growing value and importance of the remaining unserved public domain - its lands, forests, water, grass, wildlife and other resources. Project Twenty-Two is a realistic program, based upon the importance which these lands and resources have in the present and future development of our nation."

He said that over the past seven years, BLM has developed a sound system of programming which has provided sufficient data for charting the first 20 years of the project. Project Twenty-Two is divided into three periods - 1961 through 1965, 1966 through 1980, and 1981 through 2012.

Seaton said the program would give a high priority to the investigation of lands needed for recreation and that emphasis will be given to assuring public access to public lands.

**Pending in Congress**

He pointed out that Project Twenty-Two calls for enactment of H.R. 7042, which has been pending in Congress since May 11, 1959. The bill, which was drafted by the department, would permit sale by public auction of public lands in tracts of 1,280 acres or less, when the tracts have been classified as chiefly valuable for urban, commercial or industrial purposes. Seaton has repeatedly urged Congress to pass the bill, terming it the most important piece of land legisla-

tion since passage of the Taylor Grazing act.

He noted that Project Twenty-Two also calls for appointment of a public commission to inventory public domain lands which are now reserved for specific purposes. Such a commission should include experts in the fields of conservation, resources, and land management, he said.

The commissioners would be called on to determine reserved lands necessary to meet the nation's future needs for seashores and other shoreline areas, parks and other recreational areas, and wildlife, he added. In the survey, the commissioners would recommend whether any lands now set aside for particular purposes should be restored to multiple-use.

**Make Recommendations**

Since lands will be needed by states, local government and private citizens to meet the demands of expanding western communities and the need for vital resources in the course of our economic growth, the public commission would also be instructed to make recommendation on those lands which are not needed for any federal management program, Seaton said.

Bureau of Land Management Director Edward Woolley said that under the program BLM's present cash receipts of \$253 million are expected to double by 1980 and quadruple by 2012. The present 105 million acres under mineral leases is expected to be increased to 270 million acres by 2012, with a rise from \$96 million to \$358 million in mineral leasing receipts.

All land activities, including classification and adjudication, would be conducted on a current basis with backlogs eliminated by 1965. By 1985, all necessary land tenure adjustments would be completed on a selective and priority basis. Cadastral surveys would be stepped up from the present 2 million acres a year to 8 million acres a year in 1965. A peak of nearly 10 million acres would be surveyed each year by 1980.

Project Twenty-Two includes provisions for a complete public land mineral re-

source inventory. It also includes plans for thousands of range improvements, such as detention dams, springs and wells, 115,000 miles of range fencing, 12.3 million acres of range seeding, and 32.3 million acres of brush control.

**Public Range Forage**

The present public range forage production for 17 million animal-unit-months is expected to be increased so as to provide for 29 million AUMs by 1980 and 46 million AUMs by 2012. The volume of public domain timber to be annually harvested would reach 1.2 billion board feet by 1985. By 2012, the total allowable timber cut, on a sustained yield basis, would be 2.3 billion board feet a year.

Under the program, a permanent road system would be expanded to adequately facilitate the needs of land management and public access. By 2012 BLM would have some 23,000 miles of road to maintain.

Woolley said emphasis is being placed on an inventory of demands for recreational resources on public lands, and that the inventory will be kept current. He added that the bureau is cooperating fully with the outdoor recreation resources review commission appointed by President Eisenhower.

Woolley said complete cooperation will also be extended to states, counties, local governments and nonprofit organizations in making lands available for recreation purposes. Every effort will be made, he said, to help establish recreation areas and to provide public access to public lands.

**Jet Fighter Sets Closed Course Mark**

Edwards Air Force Base, Calif. - UPI - The Navy Wednesday announced its F4H Phantom II twin-jet fighter plane set a closed course speed record of 1,216.78 miles an hour.

Lt. Col. Thomas H. Miller of San Antonio, Tex., set the mark Monday on a closed triangular course to better by more than 400 miles an hour the existing record of 816.3, the Navy said.

# WARDS 88th ANNIVERSARY SALE

Only a few highlights of our sale shown here. Many more terrific home and apparel values not advertised!

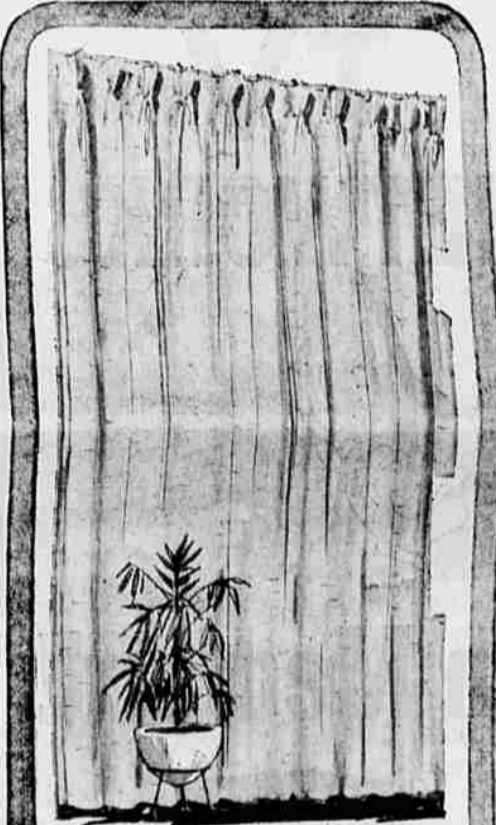
117 S. Central - SP 3-7301  
Open 9:30 to 9 Mondays, Fridays

**NYLON SHEERS FOR JUNIORS**  
3 for 2<sup>25</sup>

Choose long-wearing seamless nylons in s-l-r-e-l-c-h or regular styles. Especially designed to fit perfectly all teenagers sizes. Fall shades. Buy a box.

**2 SWEATERS—1 LOW PRICE! MAZET® ORLON®**  
Short sleeve slip-on plus cordigan. Orlon Acrylic. Easy care. Colors. 34-42.

**REG. 4.99 WOMEN'S BLACK FLATTIES**  
Save 1.11. Soft textured black leather. Flexible. Sizes 4½ to 7.



**FIBERGLAS® DRAPERIES IN 462 SIZES AND COLORS sale! 5<sup>99</sup>**

Fibreglas washes in a wink, never needs ironing. Will not shrink, fade, stretch, Resists fire, mildew. White, beige, green, pink, gold, nutmeg.

48x54".....	5.29	96x54".....	11.99
72x54".....	7.99	96x84".....	15.49
72x84".....	10.79	120x84".....	20.49
144x84".....	23.99		

\*Owens-Corning, Reg. Trademark for glass fibers

**ROCK-BOTTOM PRICE ON CASES**  
Print pillow cases. 100% cotton. Floral print, 42x36". Save during Sale!  
2 for 88¢

**SAVE 43% NOW ON WOMEN'S BRIEFS**  
39¢ quality. Smooth rayon acetate. White, assorted colors. S, M, L.  
4 prs. 88¢

**BOYS' REG. 1.98 PRINT SHIRTS**  
1.38

New fall colors and handsome prints in fine wash 'n' wear cottons. Little or no ironing. Carefully tailored for neat looks, long wear. Sizes 8 to 18.

**SAVE 25%! WOMEN'S COTTON-LINED NYLON ANKLETS**  
Get your season's supply now! Soft, absorbent and long wearing. Choose favorite washfast colors or white. 3 prs. 88¢  
Wear smart ribbed cuff up or down. 9-11.  
REGULARLY 39¢ PAIR

**SHAWL COLLAR SWEATERS**  
9<sup>98</sup>

Bulky lambs wool. Orlon® Acrylic pullovers; princely shawl collars. Newest Fall colors. Men's sizes S-M-L.

**MEN'S SPORT SHIRTS REDUCED 20%**  
2<sup>38</sup>

Favorite new styles. Many fabrics, colors. Long sleeves. S-M-L.

**MEN'S WASH 'N' WEAR SLACKS**  
3.98

Our best seller! Wash 'n' wear polished cotton in a wide range of colors including blue, winter gold, loden. Unpleated. 29 to 38.

Charcoal Briquets—10 lbs.....44¢  
2-Pc. Corner Sectional, Sleeps 2.....99.88

**Drive in and SAVE!**

on Back to School Special

**Save Save Save**

Universal Lunch KIT  
Pour-Easy Vacuum Bottle \$1.79

Desk Lamp 5.98 value.....3.95  
Porta-File Reg. size—2.98 Val. 1.89

**FREE**  
Retract Pens with 10 S-S Stamps

**BIG 100 SHEET**  
Note Book Paper 29¢

**CIGARETTES**  
20¢ PACK

1006 So. Riverside  
Also  
Central & Jackson, Medford

Just say "CHARGE IT" at Wards... pay in 30 days or extend payments