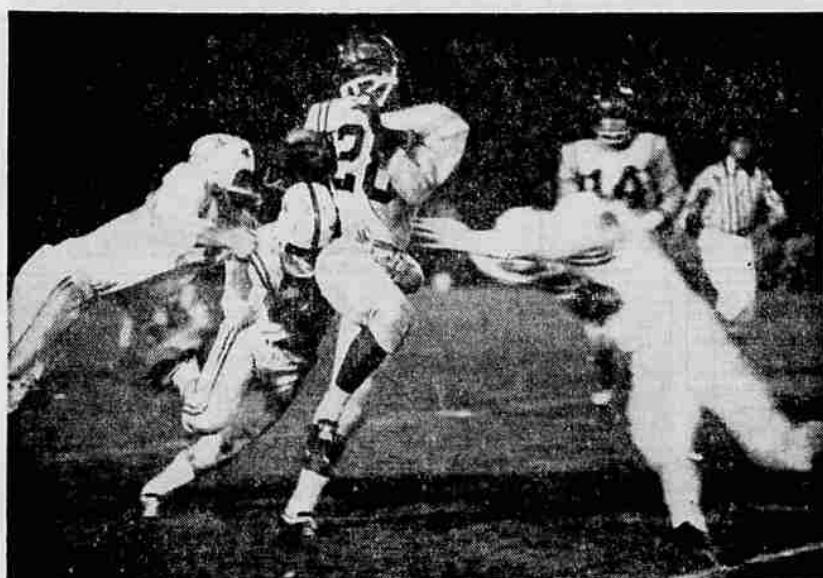


MEL RENFRO PACES METRO WIN



STATE COACH—State and Medford High school football coach Fred Spiegelberg shouts something to one of his players during Saturday night's State-Metro All-Star game in Portland which Metro won 27-13. An unidentified player looks on sadly. —(UPI Telephoto)



LONG GAIN—Metro star Mel Renfro in Portland, Renfro, who led Metro to a 27-13 victory, received the games top player award. Renfro is shown above about to be tackled after a 16 yard gain during Saturday night's State-Metro All-Star game. —(UPI Telephoto)

State Loses 4th Straight All-Star Tilt

By JIM COUR II
United Press International
Portland—(UPI)—Mel Renfro was injured Saturday night but he didn't let that bother him.
Renfro, fleet-footed half-back from Jefferson High school of Portland, suffering from a "charley horse" after the first play, led the Metropolitan all-stars to a 27-13 victory over the State all-stars in the 13th annual Shriners' football game here before a crowd of 19,634.

A two-time all-star griddler, Renfro personally accounted for 82 yards to help get the Metro squad off to a 14-0 halftime lead and then sat back.

Mel Renfro, outstanding halfback from Jefferson High school of Portland, was picked as the most valuable player in the 13th annual Shriners' football game Saturday night. It was the sixth consecutive year that a Metropolitan team player had won the award.

Bill White, fleet halfback from Roseburg High school, won the State team's most valuable back award and Tom Erdmann, a tackle from Marshfield, won the Staters most valuable lineman trophy.

For the Metros, fullback Mike Walsh of Lincoln high of Portland and tackle Jim Wiley, also of Lincoln, won the MVP back and lineman awards, respectively.

most of the second half and watched the teams match touchdowns.

He wound up with 113 yards on nine carries for a 12.5-yard-per-carry average, scored one touchdown and was voted the game's most valuable player.

Fourth Straight Win
It was Metro's fourth straight win against the Staters and brought the series, inaugurated in 1948, to six wins for each team and one tie.

Renfro wasn't the only shining light for the Metropolitan squad, however.

An ex-teammate of Renfro at Jefferson, halfback Mike Barnes, picked up 104 yards and two Lincoln high of Portland products, quarterback Bob Tobey and fullback Mike Walsh scored the game's other touchdowns.

Tobey and Renfro accounted for Metro's first half touch-

downs, which were both scored in the second quarter. Renfro piled up 37 of 60 yards in the first scoring drive that took eight plays, going over himself for the game's initial TD with 9:01 remaining in the first half.

The first tally came after Metro had twice gotten to the State 20 and had failed to score and ended a 60-yard drive.

Less than six minutes later, with 3:42 left in the second quarter, Tobey rolled 6 yards for the score to end a 45-yard scoring drive.

The game wasn't over as far as the State squad was concerned though, despite the Staters making but 29 total yards in the first half and only one first down.

The Staters came back with a touchdown with 7:27 left in the third quarter that was set up by a 72-yard punt return by Roseburg's Bill White.

Quarterback Dennis Tyler of Pendleton bucked over from the 1-yard line for the tally and Buck Corey of LaGrande kicked the extra point.

White's dazzling run came only minutes after he went 56 yards on a kickoff return.

The Metros bounced back for another touchdown in the last period. With just 2:38 gone in the fourth quarter, Tobey capped an 87-yard drive with a 14-yard scoring run.

State and Metro traded touchdowns in the game's waning minutes. White sliced over from three yards out with 8:02 left in the game for the Staters after the Metropolitan team fumbled on the 7-yard line. Fullback Walsh matched White's TD run with one of his own, a 9-yard gallop, with 3:54 remaining to end the contest's scoring.

Lannie Myers of St. Helens made good on three of Metro's four conversion attempts.

In total yardage, Metro rolled up 381 to State's 116 and first downs favored the Metro squad 21-7.

Of the Medford players in the Shrine all-star game, end Lowell Dean saw duty most of the contest on both offense and defense, end and defensive halfback Jerry Anderson saw service through the game on defense, guard John Frohnmayer had considerable service and was in and out of the fracas and halfback Skip Bennett was in the conflict much on offense and some on defense.

Ed Brown Cops Main Event At Ashland Races

Ed Brown, of Redding, Calif., emerged the top winner at the Ashland Speedway super modified races held Saturday night.

Brown won the third heat and the main event. He also placed third in the trophy dash.

Jack McCoy, popular local driver, turned in the fastest time in the time trials, just missing Art Pollard's track record by seven hundredths of a second. His time was 20.08. McCoy finished second in the trophy dash, and was running second in his heat when his car lost a wheel.

Johnny Zachery, of Redding gunned his car to first place in the trophy dash.

Bob Benefield placed first in the first heat, Bud Cook, of Klamath Falls was second, and C. E. McGilvery, of Yreka, was third.

Don Toombs gunned his car home first in the second heat with Jerry Fanger, of Medford, running second, and Don Porter running third.

Brown won the third heat, with Nick Porter placing second, and Sherm Clack third.

Lou Kruz of Medford won the fourth heat, with Marion Shippey gaining second, and Lee Covey placed third.

Brown won the main, with Cook second, Fanger third, McGilvery fourth, and Kruz fifth.

Philips Is Top Winner At MHS Meet

Al Philips, of Klamath Falls, was the top winner at the weekly all-comers track meet held Saturday evening at Medford High school.

Philips walked away with four firsts, and two seconds. His firsts were in the high school javelin, broad jump, and high jump, and in the open broad jump. His seconds were in the open javelin and high jump.

Gil Smith, of Grants Pass was the only triple winner. Smith placed first in both dashes, and low hurdles.

The final meet of the year will be held Friday in Ashland on the Southern Oregon college track.

RESULTS
High School—100—Smith, GP; Ryan, M; Geren, EP, 10.8.
150—Hanson, M; Ryan, M; Ellis, KP, 36.2.
200—Buell, A, 3:19.2.
300—Hanson, M; Ryan, M; Ellis, KP, 56.2.
400—Hanson, M; Ryan, M; Ellis, KP, 1:44.
500—Hanson, M; Ryan, M; Ellis, KP, 2:41.
600—Hanson, M; Ryan, M; Ellis, KP, 4:17.
700—Hanson, M; Ryan, M; Ellis, KP, 5:54.
800—Hanson, M; Ryan, M; Ellis, KP, 7:41.
900—Hanson, M; Ryan, M; Ellis, KP, 9:28.
1000—Hanson, M; Ryan, M; Ellis, KP, 11:15.
1100—Hanson, M; Ryan, M; Ellis, KP, 13:02.
1200—Hanson, M; Ryan, M; Ellis, KP, 14:49.
1300—Hanson, M; Ryan, M; Ellis, KP, 16:36.
1400—Hanson, M; Ryan, M; Ellis, KP, 18:23.
1500—Hanson, M; Ryan, M; Ellis, KP, 20:10.
1600—Hanson, M; Ryan, M; Ellis, KP, 21:57.
1700—Hanson, M; Ryan, M; Ellis, KP, 23:44.
1800—Hanson, M; Ryan, M; Ellis, KP, 25:31.
1900—Hanson, M; Ryan, M; Ellis, KP, 27:18.
2000—Hanson, M; Ryan, M; Ellis, KP, 29:05.
2100—Hanson, M; Ryan, M; Ellis, KP, 30:52.
2200—Hanson, M; Ryan, M; Ellis, KP, 32:39.
2300—Hanson, M; Ryan, M; Ellis, KP, 34:26.
2400—Hanson, M; Ryan, M; Ellis, KP, 36:13.
2500—Hanson, M; Ryan, M; Ellis, KP, 38:00.
2600—Hanson, M; Ryan, M; Ellis, KP, 39:47.
2700—Hanson, M; Ryan, M; Ellis, KP, 41:34.
2800—Hanson, M; Ryan, M; Ellis, KP, 43:21.
2900—Hanson, M; Ryan, M; Ellis, KP, 45:08.
3000—Hanson, M; Ryan, M; Ellis, KP, 46:55.
3100—Hanson, M; Ryan, M; Ellis, KP, 48:42.
3200—Hanson, M; Ryan, M; Ellis, KP, 50:29.
3300—Hanson, M; Ryan, M; Ellis, KP, 52:16.
3400—Hanson, M; Ryan, M; Ellis, KP, 54:03.
3500—Hanson, M; Ryan, M; Ellis, KP, 55:50.
3600—Hanson, M; Ryan, M; Ellis, KP, 57:37.
3700—Hanson, M; Ryan, M; Ellis, KP, 59:24.
3800—Hanson, M; Ryan, M; Ellis, KP, 61:11.
3900—Hanson, M; Ryan, M; Ellis, KP, 62:98.
4000—Hanson, M; Ryan, M; Ellis, KP, 64:85.
4100—Hanson, M; Ryan, M; Ellis, KP, 66:72.
4200—Hanson, M; Ryan, M; Ellis, KP, 68:59.
4300—Hanson, M; Ryan, M; Ellis, KP, 70:46.
4400—Hanson, M; Ryan, M; Ellis, KP, 72:33.
4500—Hanson, M; Ryan, M; Ellis, KP, 74:20.
4600—Hanson, M; Ryan, M; Ellis, KP, 76:07.
4700—Hanson, M; Ryan, M; Ellis, KP, 77:54.
4800—Hanson, M; Ryan, M; Ellis, KP, 79:41.
4900—Hanson, M; Ryan, M; Ellis, KP, 81:28.
5000—Hanson, M; Ryan, M; Ellis, KP, 83:15.
5100—Hanson, M; Ryan, M; Ellis, KP, 85:02.
5200—Hanson, M; Ryan, M; Ellis, KP, 86:89.
5300—Hanson, M; Ryan, M; Ellis, KP, 88:76.
5400—Hanson, M; Ryan, M; Ellis, KP, 90:63.
5500—Hanson, M; Ryan, M; Ellis, KP, 92:50.
5600—Hanson, M; Ryan, M; Ellis, KP, 94:37.
5700—Hanson, M; Ryan, M; Ellis, KP, 96:24.
5800—Hanson, M; Ryan, M; Ellis, KP, 98:11.
5900—Hanson, M; Ryan, M; Ellis, KP, 99:98.
6000—Hanson, M; Ryan, M; Ellis, KP, 101:85.
6100—Hanson, M; Ryan, M; Ellis, KP, 103:72.
6200—Hanson, M; Ryan, M; Ellis, KP, 105:59.
6300—Hanson, M; Ryan, M; Ellis, KP, 107:46.
6400—Hanson, M; Ryan, M; Ellis, KP, 109:33.
6500—Hanson, M; Ryan, M; Ellis, KP, 111:20.
6600—Hanson, M; Ryan, M; Ellis, KP, 113:07.
6700—Hanson, M; Ryan, M; Ellis, KP, 114:94.
6800—Hanson, M; Ryan, M; Ellis, KP, 116:81.
6900—Hanson, M; Ryan, M; Ellis, KP, 118:68.
7000—Hanson, M; Ryan, M; Ellis, KP, 120:55.
7100—Hanson, M; Ryan, M; Ellis, KP, 122:42.
7200—Hanson, M; Ryan, M; Ellis, KP, 124:29.
7300—Hanson, M; Ryan, M; Ellis, KP, 126:16.
7400—Hanson, M; Ryan, M; Ellis, KP, 128:03.
7500—Hanson, M; Ryan, M; Ellis, KP, 129:90.
7600—Hanson, M; Ryan, M; Ellis, KP, 131:77.
7700—Hanson, M; Ryan, M; Ellis, KP, 133:64.
7800—Hanson, M; Ryan, M; Ellis, KP, 135:51.
7900—Hanson, M; Ryan, M; Ellis, KP, 137:38.
8000—Hanson, M; Ryan, M; Ellis, KP, 139:25.
8100—Hanson, M; Ryan, M; Ellis, KP, 141:12.
8200—Hanson, M; Ryan, M; Ellis, KP, 142:99.
8300—Hanson, M; Ryan, M; Ellis, KP, 144:86.
8400—Hanson, M; Ryan, M; Ellis, KP, 146:73.
8500—Hanson, M; Ryan, M; Ellis, KP, 148:60.
8600—Hanson, M; Ryan, M; Ellis, KP, 150:47.
8700—Hanson, M; Ryan, M; Ellis, KP, 152:34.
8800—Hanson, M; Ryan, M; Ellis, KP, 154:21.
8900—Hanson, M; Ryan, M; Ellis, KP, 156:08.
9000—Hanson, M; Ryan, M; Ellis, KP, 157:95.
9100—Hanson, M; Ryan, M; Ellis, KP, 159:82.
9200—Hanson, M; Ryan, M; Ellis, KP, 161:69.
9300—Hanson, M; Ryan, M; Ellis, KP, 163:56.
9400—Hanson, M; Ryan, M; Ellis, KP, 165:43.
9500—Hanson, M; Ryan, M; Ellis, KP, 167:30.
9600—Hanson, M; Ryan, M; Ellis, KP, 169:17.
9700—Hanson, M; Ryan, M; Ellis, KP, 171:04.
9800—Hanson, M; Ryan, M; Ellis, KP, 172:91.
9900—Hanson, M; Ryan, M; Ellis, KP, 174:78.
10000—Hanson, M; Ryan, M; Ellis, KP, 176:65.
10100—Hanson, M; Ryan, M; Ellis, KP, 178:52.
10200—Hanson, M; Ryan, M; Ellis, KP, 180:39.
10300—Hanson, M; Ryan, M; Ellis, KP, 182:26.
10400—Hanson, M; Ryan, M; Ellis, KP, 184:13.
10500—Hanson, M; Ryan, M; Ellis, KP, 186:00.
10600—Hanson, M; Ryan, M; Ellis, KP, 187:87.
10700—Hanson, M; Ryan, M; Ellis, KP, 189:74.
10800—Hanson, M; Ryan, M; Ellis, KP, 191:61.
10900—Hanson, M; Ryan, M; Ellis, KP, 193:48.
11000—Hanson, M; Ryan, M; Ellis, KP, 195:35.
11100—Hanson, M; Ryan, M; Ellis, KP, 197:22.
11200—Hanson, M; Ryan, M; Ellis, KP, 199:09.
11300—Hanson, M; Ryan, M; Ellis, KP, 200:96.
11400—Hanson, M; Ryan, M; Ellis, KP, 202:83.
11500—Hanson, M; Ryan, M; Ellis, KP, 204:70.
11600—Hanson, M; Ryan, M; Ellis, KP, 206:57.
11700—Hanson, M; Ryan, M; Ellis, KP, 208:44.
11800—Hanson, M; Ryan, M; Ellis, KP, 210:31.
11900—Hanson, M; Ryan, M; Ellis, KP, 212:18.
12000—Hanson, M; Ryan, M; Ellis, KP, 214:05.
12100—Hanson, M; Ryan, M; Ellis, KP, 215:92.
12200—Hanson, M; Ryan, M; Ellis, KP, 217:79.
12300—Hanson, M; Ryan, M; Ellis, KP, 219:66.
12400—Hanson, M; Ryan, M; Ellis, KP, 221:53.
12500—Hanson, M; Ryan, M; Ellis, KP, 223:40.
12600—Hanson, M; Ryan, M; Ellis, KP, 225:27.
12700—Hanson, M; Ryan, M; Ellis, KP, 227:14.
12800—Hanson, M; Ryan, M; Ellis, KP, 229:01.
12900—Hanson, M; Ryan, M; Ellis, KP, 230:88.
13000—Hanson, M; Ryan, M; Ellis, KP, 232:75.
13100—Hanson, M; Ryan, M; Ellis, KP, 234:62.
13200—Hanson, M; Ryan, M; Ellis, KP, 236:49.
13300—Hanson, M; Ryan, M; Ellis, KP, 238:36.
13400—Hanson, M; Ryan, M; Ellis, KP, 240:23.
13500—Hanson, M; Ryan, M; Ellis, KP, 242:10.
13600—Hanson, M; Ryan, M; Ellis, KP, 243:97.
13700—Hanson, M; Ryan, M; Ellis, KP, 245:84.
13800—Hanson, M; Ryan, M; Ellis, KP, 247:71.
13900—Hanson, M; Ryan, M; Ellis, KP, 249:58.
14000—Hanson, M; Ryan, M; Ellis, KP, 251:45.
14100—Hanson, M; Ryan, M; Ellis, KP, 253:32.
14200—Hanson, M; Ryan, M; Ellis, KP, 255:19.
14300—Hanson, M; Ryan, M; Ellis, KP, 257:06.
14400—Hanson, M; Ryan, M; Ellis, KP, 258:93.
14500—Hanson, M; Ryan, M; Ellis, KP, 260:80.
14600—Hanson, M; Ryan, M; Ellis, KP, 262:67.
14700—Hanson, M; Ryan, M; Ellis, KP, 264:54.
14800—Hanson, M; Ryan, M; Ellis, KP, 266:41.
14900—Hanson, M; Ryan, M; Ellis, KP, 268:28.
15000—Hanson, M; Ryan, M; Ellis, KP, 270:15.
15100—Hanson, M; Ryan, M; Ellis, KP, 272:02.
15200—Hanson, M; Ryan, M; Ellis, KP, 273:89.
15300—Hanson, M; Ryan, M; Ellis, KP, 275:76.
15400—Hanson, M; Ryan, M; Ellis, KP, 277:63.
15500—Hanson, M; Ryan, M; Ellis, KP, 279:50.
15600—Hanson, M; Ryan, M; Ellis, KP, 281:37.
15700—Hanson, M; Ryan, M; Ellis, KP, 283:24.
15800—Hanson, M; Ryan, M; Ellis, KP, 285:11.
15900—Hanson, M; Ryan, M; Ellis, KP, 286:98.
16000—Hanson, M; Ryan, M; Ellis, KP, 288:85.
16100—Hanson, M; Ryan, M; Ellis, KP, 290:72.
16200—Hanson, M; Ryan, M; Ellis, KP, 292:59.
16300—Hanson, M; Ryan, M; Ellis, KP, 294:46.
16400—Hanson, M; Ryan, M; Ellis, KP, 296:33.
16500—Hanson, M; Ryan, M; Ellis, KP, 298:20.
16600—Hanson, M; Ryan, M; Ellis, KP, 300:07.
16700—Hanson, M; Ryan, M; Ellis, KP, 301:94.
16800—Hanson, M; Ryan, M; Ellis, KP, 303:81.
16900—Hanson, M; Ryan, M; Ellis, KP, 305:68.
17000—Hanson, M; Ryan, M; Ellis, KP, 307:55.
17100—Hanson, M; Ryan, M; Ellis, KP, 309:42.
17200—Hanson, M; Ryan, M; Ellis, KP, 311:29.
17300—Hanson, M; Ryan, M; Ellis, KP, 313:16.
17400—Hanson, M; Ryan, M; Ellis, KP, 315:03.
17500—Hanson, M; Ryan, M; Ellis, KP, 316:90.
17600—Hanson, M; Ryan, M; Ellis, KP, 318:77.
17700—Hanson, M; Ryan, M; Ellis, KP, 320:64.
17800—Hanson, M; Ryan, M; Ellis, KP, 322:51.
17900—Hanson, M; Ryan, M; Ellis, KP, 324:38.
18000—Hanson, M; Ryan, M; Ellis, KP, 326:25.
18100—Hanson, M; Ryan, M; Ellis, KP, 328:12.
18200—Hanson, M; Ryan, M; Ellis, KP, 330:00.
18300—Hanson, M; Ryan, M; Ellis, KP, 331:87.
18400—Hanson, M; Ryan, M; Ellis, KP, 333:74.
18500—Hanson, M; Ryan, M; Ellis, KP, 335:61.
18600—Hanson, M; Ryan, M; Ellis, KP, 337:48.
18700—Hanson, M; Ryan, M; Ellis, KP, 339:35.
18800—Hanson, M; Ryan, M; Ellis, KP, 341:22.
18900—Hanson, M; Ryan, M; Ellis, KP, 343:09.
19000—Hanson, M; Ryan, M; Ellis, KP, 344:96.
19100—Hanson, M; Ryan, M; Ellis, KP, 346:83.
19200—Hanson, M; Ryan, M; Ellis, KP, 348:70.
19300—Hanson, M; Ryan, M; Ellis, KP, 350:57.
19400—Hanson, M; Ryan, M; Ellis, KP, 352:44.
19500—Hanson, M; Ryan, M; Ellis, KP, 354:31.
19600—Hanson, M; Ryan, M; Ellis, KP, 356:18.
19700—Hanson, M; Ryan, M; Ellis, KP, 358:05.
19800—Hanson, M; Ryan, M; Ellis, KP, 359:92.
19900—Hanson, M; Ryan, M; Ellis, KP, 361:79.
20000—Hanson, M; Ryan, M; Ellis, KP, 363:66.
20100—Hanson, M; Ryan, M; Ellis, KP, 365:53.
20200—Hanson, M; Ryan, M; Ellis, KP, 367:40.
20300—Hanson, M; Ryan, M; Ellis, KP, 369:27.
20400—Hanson, M; Ryan, M; Ellis, KP, 371:14.
20500—Hanson, M; Ryan, M; Ellis, KP, 373:01.
20600—Hanson, M; Ryan, M; Ellis, KP, 374:88.
20700—Hanson, M; Ryan, M; Ellis, KP, 376:75.
20800—Hanson, M; Ryan, M; Ellis, KP, 378:62.
20900—Hanson, M; Ryan, M; Ellis, KP, 380:49.
21000—Hanson, M; Ryan, M; Ellis, KP, 382:36.
21100—Hanson, M; Ryan, M; Ellis, KP, 384:23.
21200—Hanson, M; Ryan, M; Ellis, KP, 386:10.
21300—Hanson, M; Ryan, M; Ellis, KP, 387:97.
21400—Hanson, M; Ryan, M; Ellis, KP, 389:84.
21500—Hanson, M; Ryan, M; Ellis, KP, 391:71.
21600—Hanson, M; Ryan, M; Ellis, KP, 393:58.
21700—Hanson, M; Ryan, M; Ellis, KP, 395:45.
21800—Hanson, M; Ryan, M; Ellis, KP, 397:32.
21900—Hanson, M; Ryan, M; Ellis, KP, 399:19.
22000—Hanson, M; Ryan, M; Ellis, KP, 401:06.
22100—Hanson, M; Ryan, M; Ellis, KP, 402:93.
22200—Hanson, M; Ryan, M; Ellis, KP, 404:80.
22300—Hanson, M; Ryan, M; Ellis, KP, 406:67.
22400—Hanson, M; Ryan, M; Ellis, KP, 408:54.
22500—Hanson, M; Ryan, M; Ellis, KP, 410:41.
22600—Hanson, M; Ryan, M; Ellis, KP, 412:28.
22700—Hanson, M; Ryan, M; Ellis, KP, 414:15.
22800—Hanson, M; Ryan, M; Ellis, KP, 416:02.
22900—Hanson, M; Ryan, M; Ellis, KP, 417:89.
23000—Hanson, M; Ryan, M; Ellis, KP, 419:76.
23100—Hanson, M; Ryan, M; Ellis, KP, 421:63.
23200—Hanson, M; Ryan, M; Ellis, KP, 423:50.
23300—Hanson, M; Ryan, M; Ellis, KP, 425:37.
23400—Hanson, M; Ryan, M; Ellis, KP, 427:24.
23500—Hanson, M; Ryan, M; Ellis, KP, 429:11.
23600—Hanson, M; Ryan, M; Ellis, KP, 430:98.
23700—Hanson, M; Ryan, M; Ellis, KP, 432:85.
23800—Hanson, M; Ryan, M; Ellis, KP, 434:72.
23900—Hanson, M; Ryan, M; Ellis, KP, 436:59.
24000—Hanson, M; Ryan, M; Ellis, KP, 438:46.
24100—Hanson, M; Ryan, M; Ellis, KP, 440:33.
24200—Hanson, M; Ryan, M; Ellis, KP, 442:20.
24300—Hanson, M; Ryan, M; Ellis, KP, 444:07.
24400—Hanson, M; Ryan, M; Ellis, KP, 445:94.
24500—Hanson, M; Ryan, M; Ellis, KP, 447:81.
24600—Hanson, M; Ryan, M; Ellis, KP, 449:68.
24700—Hanson, M; Ryan, M; Ellis, KP, 451:55.
24800—Hanson, M; Ryan, M; Ellis, KP, 453:42.
24900—Hanson, M; Ryan, M; Ellis, KP, 455:29.
25000—Hanson, M; Ryan, M; Ellis, KP, 457:16.
25100—Hanson, M; Ryan, M; Ellis, KP, 459:03.
25200—Hanson, M; Ryan, M; Ellis, KP, 460:90.
25300—Hanson, M; Ryan, M; Ellis, KP, 462:77.
25400—Hanson, M; Ryan, M; Ellis, KP, 464:64.
25500—Hanson, M; Ryan, M; Ellis, KP, 466:51.
25600—Hanson, M; Ryan, M; Ellis, KP, 468:38.
25700—Hanson, M; Ryan, M; Ellis, KP, 470:25.
25800—Hanson, M; Ryan, M; Ellis, KP, 472:12.
25900—Hanson, M; Ryan, M; Ellis, KP, 473:99.
26000—Hanson, M; Ryan, M; Ellis, KP, 475:86.
26100—Hanson, M; Ryan, M; Ellis, KP, 477:73.
26200—Hanson, M; Ryan, M; Ellis, KP, 479:60.
26300—Hanson, M; Ryan, M; Ellis, KP, 481:47.
26400—Hanson, M; Ryan, M; Ellis, KP, 483:34.
26500—Hanson, M; Ryan, M; Ellis, KP, 485:21.
26600—Hanson, M; Ryan, M; Ellis, KP, 487:08.
26700—Hanson, M; Ryan, M; Ellis, KP, 488:95.
26800—Hanson, M; Ryan, M; Ellis, KP, 490:82.
26900—Hanson, M; Ryan, M; Ellis, KP, 492:69.
27000—Hanson, M; Ryan, M; Ellis, KP, 494:56.
27100—Hanson, M; Ryan, M; Ellis, KP, 496:43.
27200—Hanson, M; Ryan, M; Ellis, KP, 498:30.
27300—Hanson, M; Ryan, M; Ellis, KP, 500:17.
27400—Hanson, M; Ryan, M; Ellis, KP, 502:04.
27500—Hanson, M; Ryan, M; Ellis, KP, 503:91.
27600—Hanson, M; Ryan, M; Ellis, KP, 505:78.
27700—Hanson, M; Ryan, M; Ellis, KP, 507:65.
27800—Hanson, M; Ryan, M; Ellis, KP, 509:52.
27900—Hanson, M; Ryan, M; Ellis, KP, 511:39.
28000—Hanson, M; Ryan, M; Ellis, KP, 513:26.
28100—Hanson, M; Ryan, M; Ellis, KP, 515:13.
28200—Hanson, M; Ryan, M; Ellis, KP, 517:00.
28300—Hanson, M; Ryan, M; Ellis, KP, 518:87.
28400—Hanson, M; Ryan, M; Ellis, KP, 520:74.
28500—Hanson, M; Ryan, M; Ellis, KP, 522:61.
28600—Hanson, M; Ryan, M; Ellis, KP, 524:48.
28700—Hanson, M; Ryan, M; Ellis, KP, 526:35.
28800—Hanson, M; Ryan, M; Ellis, KP, 528:22.
28900—Hanson, M; Ryan, M; Ellis, KP, 530:09.
29000—Hanson, M; Ryan, M; Ellis, KP, 531:96.
29100—Hanson, M; Ryan, M; Ellis, KP, 533:83.
29200—Hanson, M; Ryan, M; Ellis, KP, 535:70.
29300—Hanson, M; Ryan, M; Ellis, KP, 537:57.
29400—Hanson, M; Ryan, M; Ellis, KP, 539:44.
29500—Hanson, M; Ryan, M; Ellis, KP, 541:31.
29600—Hanson, M; Ryan, M; Ellis, KP, 543:18.
29700—Hanson, M; Ryan, M; Ellis, KP, 545:05.
29800—Hanson, M; Ryan, M; Ellis, KP, 546:92.
29900—Hanson, M; Ryan, M; Ellis, KP, 548:79.
30000—Hanson, M; Ryan, M; Ellis, KP, 550:66.
30100—Hanson, M; Ryan, M; Ellis, KP, 552:53.
30200—Hanson, M; Ryan, M; Ellis, KP, 554:40.
30300—Hanson, M; Ryan, M; Ellis, KP, 556:27.
30400—Hanson, M; Ryan, M; Ellis, KP, 558:14.
30500—Hanson, M; Ryan, M; Ellis, KP, 560:01.
30600—Hanson, M; Ryan, M; Ellis, KP, 561:88.
30700—Hanson, M; Ryan, M; Ellis, KP, 563:75.
30800—Hanson, M; Ryan, M; Ellis, KP, 565:62.
30900—Hanson, M; Ryan, M; Ellis, KP, 567:49.
31000—Hanson, M; Ryan, M; Ellis, KP, 569:36.
31100—Hanson, M; Ryan, M; Ellis, KP, 571:23.
31200—Hanson, M; Ryan, M; Ellis, KP, 573:10.
31300—Hanson, M; Ryan, M; Ellis, KP, 574:97.
31400—Hanson, M; Ryan, M; Ellis, KP, 576:84.
31500—Hanson, M; Ryan, M; Ellis, KP, 578:71.
31600—Hanson, M; Ryan, M; Ellis, KP, 580:58.
31700—Hanson, M; Ryan, M; Ellis, KP, 582:45.
31800—Hanson, M; Ryan, M; Ellis, KP, 584:32.
31900—Hanson, M; Ryan, M; Ellis, KP, 586:19.
32000—Hanson, M; Ryan, M; Ellis, KP, 588:06.
32100—Hanson, M; Ryan, M; Ellis, KP, 589:93.
32200—Hanson, M; Ryan, M; Ellis, KP, 591:80.
32300—Hanson, M; Ryan, M; Ellis, KP, 593:67.
32400—Hanson, M; Ryan, M; Ellis, KP, 595:54.<