

Philippines Gateway for Lucrative Smuggling Work

Manila—(UPI)—Dollars, dimes and cents are being slipped in and out of the Philippines via the dangerous but highly lucrative smuggling route. Contraband, human and otherwise, has grown into a multi-million dollar operation in this Asian chain of islands. With 14,700 miles of coastlines, twice the length of the United States, the Philippines authorities have more on their hands than the willing but undermanned navy can guard. Smugglers operated mainly between the Philippines and Hong Kong, Indonesia or Singapore. British North Borneo is the main avenue to Singapore and beyond.

So rampant is smuggling that Manila's Mayor Arsenio H. Lacson says the Philippines has the "dubious distinction of being foremost among the many smuggling centers in Asia."

Communism Visible
The fine hand of communism is visible in the widespread smuggling activities here. A Communist plan to dump cheap goods, manufactured in the China Mainland, in the Philippines to sabotage the local economy, has been charged by the Army Intelligence.

The traffic of smuggled goods is two ways. Luxury items—cigarettes, cameras, transistorized radios, TV sets, refrigerators, clothing, jewelry, perfumes—slip into the country in violation of import control regulations.

On the other hand United States dollars are spirited abroad largely through clever manipulations of exporters.

An American civilian employee at the U.S. Clark Field Air Force Base was recently charged with sending large quantities of U.S. dollars out of the country.

The sex aspect of the shady enterprises consist of Chinese girls—plus some Europeans—brought in from Hong Kong, Singapore and Bangkok. They are generally camouflaged as "actresses."

The girls are employed, charged Mayor Lacson, "to wangle favors, concessions and special privileges from the right sources for members and allies of the syndicate." **Firearms Abound**
Loose firearms abound in the southern Sulu Archipel-

ago of the Philippines which is populated by Filipino Muslims. Indonesian rebels are reported to have access to these sources which are sometimes bartered for Indonesian copra.

The gun-running, aggravated by alleged trafficking of Filipino Muslim traders by Indonesian planes, chilled Philippines-Indonesian relations last year but, at the same time, opened officials' eyes to the need for cooperation in fighting smugglers regardless of nationality.

Presidential Investigator Marcelino Calinawan has charged before a Senate Com-

mittee that the government lost some \$110 million in the shipments of copra alone. Calinawan blamed an unnamed eleven Chinese traders.

Violations Reported
That is the hard method. It has repeatedly been charged that an easier avenue is often taken by "professional travelers" to and from Hong mountains of "personal effects," often duty free. They sometimes enjoy the favor and partial protection of influential Filipino politicians. Sometimes customs officials look the other way.

Packed under plastics and wax covers, the prohibited goods were dropped from kumpts in the sea off Manila where members of the smug-

gling syndicate picked them up for distribution to outlets in the city.

The smugglers also utilize a more subtle mode of operation. Disguised as a traveler, for instance, a smuggler goes to a Chinese moneylender and exchanges his pesos for "Chits" against which he will be paid Hong Kong dollars upon arrival in the British colony. He then ships goods he buys back to Manila. No

currency exchange of the official type is involved. The Philippines is waging an anti-smuggling drive. President Carlos P. Garcia has assigned a combined Army-Navy-Constabulary task force to the Sulu, Mindanao and Palawan Islands area.

In addition, agents of the National Bureau of Investigation and the Customs Commission have been thrown into aid in guarding the so-called "Southern Back Door." The task force is under firm orders to track down the smugglers and use guns, if persuasion fails.

On the international level, the Philippines and Indonesia signed a diplomatic note providing for joint patrols in waters separating the two neighbors.

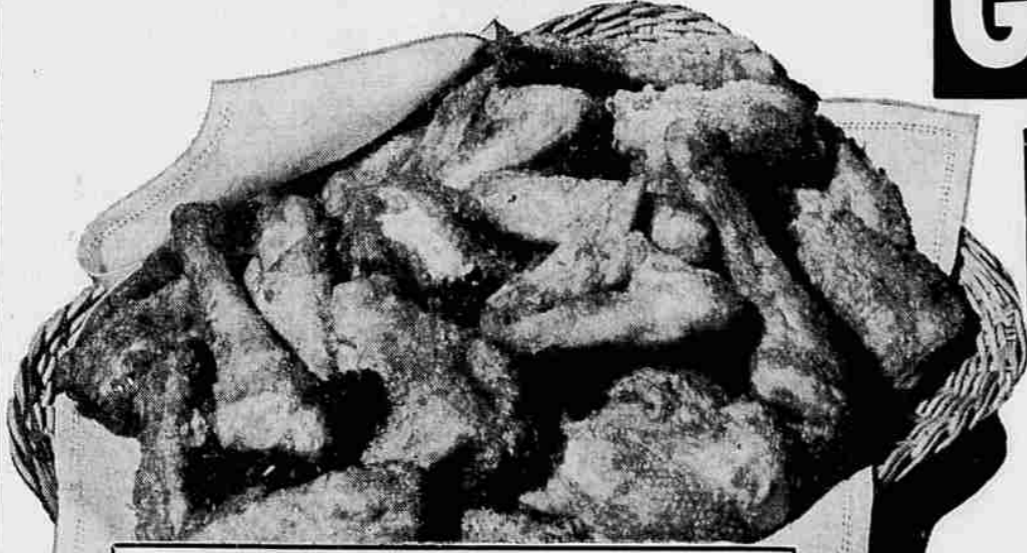
To augment the undermanned Philippines Navy patrols, representations have been made with Great Britain for the formation of combined patrols working out of Sandakan, capital of British North Borneo.



VETS' PETS PREFER NEW VETS' NUGGETS OF NOURISHMENT
Top quality... money-saving low price!
Help provide guide dogs for the blind—see Vets' labels for details!

LOWEST FOOD PRICES IN TOWN!

Lots and Lots of FREE Parking



FRYERS

"Frying Chicken at its best!"

Meat Dept. Specials Effective Through Saturday, Aug. 13

Bridgeman Bros.—Oregon Grown • U.S.D.A. Inspected

Whole Bodied Eviscerated	Pan-Ready
37^C lb.	43^C lb.

CHUCK STEAKS U.S.D.A. GRADED Wonderful for barbecues lb. **59^C**

GROUND BEEF 100% all beef! Lean, fresh ground 3 lbs. **\$1³⁹**

BACON Swift's—Sweet rasher One pound package—SLICED! lb. **49^C**

Haley's Veal Cutlets Fresh Frosted 4 for 98c • \$2.89 Doz. Stewing HENS ea. **98^C**

Morrell's Canned **PICNIC SHOULDER** 3 lb. can **\$1⁹⁸** ea.

GRANDVIEW MARKET

SLASHES PRICES

Right to Rockbottom!

DEL MONTE — 303 Cans
FRUIT COCKTAIL 5 FOR **\$1³⁵** SAVE 35c
Regular 27c Can

JIF — 18 Ounce
PEANUT BUTTER 49^C SAVE 16c
Regular 65c

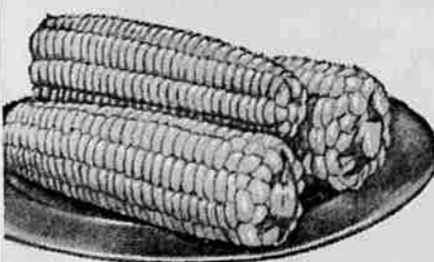
BAGLEY or SISKIYOU
Freestone PEARS 5 FOR **\$1⁴⁵** SAVE 45c
Regular 29c

Betty Crocker, Duncan Hines, Pillsbury
REG. CAKE MIXES 4 FOR **\$1⁵⁶** SAVE 56c
Regular 39c Each

5-oz. — Stahl-Meyer Hickory Smoked
VIENNA SAUSAGE 3 FOR **\$1¹⁷** SAVE 17c
Regular 39c

Quarts of Grandview
SALAD DRESSING 39^C SAVE 14c
Regular 53c

THE HOME OF COUNTRY-STYLE FRIENDLINESS AND HOSPITALITY!



★ LOCAL ★
CORN 6 big nice ears **25^C**
FINEST IN THE VALLEY!

BANANAS
Green Tipped—Perfect for Salads

2 L B S **25^C**

LETTUCE
Crisp, Fresh, Green

Pay Only **10^C** lb.

POTATOES
No. 2

50 lbs. **\$1⁸⁹**

Cantaloupe
Jumbo 45's

10 FOR **\$1**

LEMONS Small Juicy 4 for **\$1⁰⁰**

MELONS

Persians, Casabas Honeydews **8^C** lb.

Smith Sees Rapid Expansion Along Oregon Coast

Coquille—(UPI)—Republican Senate candidate Elmo Smith predicted here Wednesday that rapid industrial expansion would follow maximum development of port and highway facilities serving the Oregon coast.

The Albany publisher and former governor of Oregon told a Coquille Rotary luncheon that he called the coast "Oregon's greatest potential area for industrial growth." He urged full development of port facilities and a system of modern highways to link each harbor community with inland areas of Oregon.

And he declared: "As your U.S. Senator, I will work aggressively for the achievement of this program."

Projects Mentioned
Smith mentioned the following coastal projects: South Jetty at Coos Bay; Coos-Millicoma river; Coquille river; Charleston small boat harbor; Siuslaw river south jetty; Siuslaw small boat harbor; Umpqua river south jetty; Umpqua river navigation study; Port Orford harbor project; Tillamook bay and bar project; Yaquina bay and bar modification; Rogue river small harbor study; Chetco river harbor modification, and several Columbia river projects.

Smith was to address the Coquille Lions club today.

Oregon Will Need 90,000 Bean Pickers

Portland—(UPI)—Oregon will need 90,000 bean pickers to save the \$36 million 1960 bean crop, according to Don Merrill, secretary of the Northwest Cannery and Freezers Association.

Favorable weather has brought on a bumper crop of beans and 500 additional pickers are needed in the Portland area immediately, Merrill said, and another 1000 will be needed by the week end.

About 4000 pickers are already working in the Portland area bean fields and the cannery association said about 15,000 will be needed here when the season reaches its peak about Aug. 15 to Sept. 12.

Portland growers must rely on local day help to harvest their crop.

Because of the good crop some children were reported making \$10 a day.

SWIFTNING 59^C
3 lbs., Reg. 79c, Save 20c

B&M OVEN BAKED BEANS
28-oz. — Reg. 33c 4 for 1.00 Save 32c

SWANSON'S FROZEN MEAT PIES 4 FOR **89^C**
Regular 29c — Save 27c

PIECES and STEMS MUSHROOMS 4 FOR **\$1³³** Reg. 33c Save 32c
Shady Glen—4-oz.



At Grandview you get the Extra savings of S&H GREEN STAMPS!

Grandview Market

AND FOOD LOCKERS
2330 CRATER LAKE AVE.

STORE HOURS
Weekdays 9 A.M.—9 P.M.
Sundays 10 A.M.—8 P.M.

PRICES EFFECTIVE THROUGH AUG. 14

Phone SP 2-8188
Limit Rights Reserved

