

Radio Telescope Method Developed

London - (Science Service) - A new method for "making" a large radio telescope has been developed by two astronomers at the Cavendish Laboratory in Cambridge, England. They say it can be made by mathematically combining the radio information received on two smaller radio telescopes.

The synthetic radio telescope was devised by Drs. M. Ryle and A. Hewish to obtain increased resolving power. Many investigations of the sources of radio waves in the heavens are limited by the resolving power that can be achieved by conventional methods of constructing the receiving antennas.

Nuclear Powered 'Sentry' Planned

Baltimore, Md. - (Science Service) - A nuclear-powered automatic electronic "sentry" capable of recording data and transmitting it from a remote ground location for at least two years without servicing or refueling is being developed for the U.S. Atomic Energy Commission.

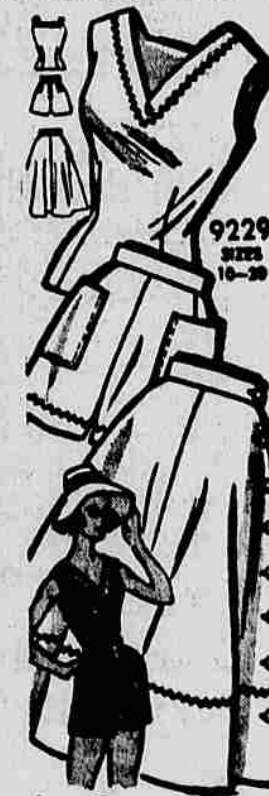
Energy for the "sentry" will be supplied for a five-watt generator, which will convert heat from safely-enclosed pellets containing strontium-90 directly into a continuous flow of electricity. The device will be linked with weather instruments to measure temperature, wind speed, with direction and barometric pressure in order to demonstrate its capabilities. It could, however, be easily modified to detect seismic disturbances or to record continuous any other type of information in a remote area.

Capture of Skunk Could Be Confusing

Newark, N.Y. - When police received a report that a skunk had been lost, the following entry was made on the log:

"Follows, don't try to pick it up because you may get hold of the wrong skunk."

Marvelous Mixers



Easy-sew sun-triel blouse, side-buttoned skirt, boy shorts mix happily all summer - cost so little to sew in solid cotton or gay print, denim, plique. Printed Pattern 9229: Misses Sizes 10, 12, 14, 16, 18, 20. Size 16 includes 1 1/4 yards 35-inch; short skirt 3 1/2 yards. Send 35 CENTS (color) for this pattern - add 10 cents for each pattern for first-class mailing. Send to Marian Martin, Medford Mail Tribune, Pattern Dept., 233 West 18th St., New York 11, N. Y. Print plainly NAME, ADDRESS with SIZE and STYLE NUMBER.

2nd BIG WEEK...

SAFEWAY BRANDS SALE!



Prices in this advertisement are effective through Sunday, August 14, at Safeway in Medford. We reserve the right to limit.

It's a pleasure to shop in cool air conditioned comfort at your Safeway Stores. You won't want to leave but we do close at 9 p.m.

Here are special savings on your favorite BEL-AIR Premium quality

FROZEN FOODS

Choose from cut or French style green beans, 9-oz., chopped broccoli, kernel corn, mixed vegetables, peas, peas and carrots, 10-oz., regular or crinkle cut French fries, 9-oz., and leaf or chopped spinach, 12-oz. Mix 'em or match 'em.

5 Pkgs. only \$1.00



Here again! The great event that means extra-savings for you!

- Kitchen Craft Flour 10-lb. 89¢
- Pancake Flour 10-lb. 99¢
- White Magic Bleach Gal. 49¢
- Detergent White Magic-49 1/2-oz. 49¢
- Kat Nip Cat Food 10 15-oz. cans 89¢

Save on Your Favorite "Safeway" Cheese 59¢ lb.

TOWN HOUSE Fancy Quality Tomato Juice 5 46 oz. tins \$1.00

Reg. 25¢ TOWN HOUSE Fruit Cocktail 5 303 tins \$1.00

For example, look at these great values this weekend at Safeway.

Margarine

Salad Dressing

Cottage Cheese

Grated Tuna

Instant Milk

Salad Oil

- Coldbrook. Fine quality 6 1-lb. pkgs. 98¢
- NuMade adds flavor to tasty summer salads Qt. 39¢
- Lucerne in 5 varieties Rich in creamy smoothness Half gal. 98¢ - quart 49¢ pint 25¢
- Tempest light meat tuna-Reg. 20¢ value 5 6-oz. tins 89¢
- Lac-Mix. Non-fat dry milk solids. Just add water... mixes instantly 12 qt. pkg. 99¢
- NuMade is finest for frying and best for baking. Brings out the natural flavors Qt. 39¢

BIG COFFEE SPECIAL!

10¢ OFF EDWARDS COFFEE

2-LB. CAN YOU PAY ONLY 99¢

Lots of meat on these specially selected... ready to pop into the pan

FRESH FRYERS!



These plump 'n tender chickens average from 2 to 3 pounds, and are specially selected for their superb eating qualities. Each and every one is guaranteed to cook to a rich golden brown. Pick up a few for this weekend. Put away a few in the freezer for later. Look at this terrific savings.

Completely dressed and drawn... Per pound **35¢**

Cut Up Fryers lb. 39¢

JOHNSON'S MODEL BAKERY

- All Cake Donuts... 60¢ Doz.
- All Raised Donuts... 65¢ Doz.
- Almond Butter Sponge Cake, Lemon Filling... 69¢
- Gold Bond stamps with each purchase.

HIGHWAY BEANS

- Choose from delicious Blackeye, Pork 'n Beans, Kidney Beans, Pintos, or Mexican Style Beans. Mix 'em or Match 'em 8 300 tins \$1
- Green Beans Town House Fancy Cut 5 300 tin \$1
- Dry Limas Highway Lima Beans 8 300 tins \$1

Skinless Wieners

Grade "A" Turkeys

Canned Picnics

- Safeway-made from selected beef and pork cuts 1-lb. pkg. 49¢
- Mature Hens average 14 to 16 lbs. lb. 39¢
- Armour Star, fully smoked ready to eat and enjoy 3-lb. tin \$1.89

SLAB BACON

Fully smoked, whole or half slabs... at special low prices this weekend.

lb. **39¢**



TOMATOES

Real vine-ripened beauties. Perfect slices for taste-tempting summer salads or sandwiches. They're excellent quality.

2 lbs. **25¢**

- Boneless Steak Top round steak "US DA CHOICE" beef lb. 98¢
- Swiss Steaks Boneless "USDA CHOICE" beef lb. 95¢
- Sirloin Tip "USDA CHOICE" beef well aged, close trimmed lb. 98¢
- Rump Roast CHOICE" Beef lb. 89¢

Meat Pies 5 8-oz. pies \$1

- Pork Sausage Safeway bulk. breakfast treat lb. 49¢
- Cube Steaks "USDA CHOICE" beef lb. \$1.19
- Whiting Captain's Choice, frozen 1 1/2 with the Cape Cod tang pkg. 39¢
- Plate Beef Tender "USDA CHOICE" well aged lb. 19¢

Quicker Coolin' Cragmont

Orange Soda • Sparkling Punch Lemon Lime • Cola • Root Beer

in 12 oz. 6 for 59¢

Start saving those valuable **GOLD BOND STAMPS**

Get wonderful gifts for all occasions... plus big savings when you shop at Safeway.

- Golden Bananas Fancy Quality U.S. No. 1 Grade 2 lbs. 29¢
- New Potatoes U.S. No. 2's Guaranteed 50-lb. pkg. \$1.98
- Zucchini Squash Mild Flavor 3 lbs. 29¢
- Head Lettuce Crisp, local grown Solid, large size 2 for 29¢
- PEACHES Ripe, RED HAVENS Famous For Flavor 2 lbs. 29¢
- 10c Bonus Offer FREE coupon worth 10c toward the purchase of a strip
- Head of Lettuce when you buy a quart of Nu Made **MAYONNAISE** 59¢

SAFEWAY

- Pineapple Juice Lani, fancy 4 46-oz. tins \$1
- Blended Juice Lani pineapple-grapefruit. 5 29-oz. tins \$1
- Apple Sauce Highway, made from selected apples. 7 303 tins \$1
- Cling Peaches Highway halves. 4 No. 2's tins \$1
- Oranges Town House or Glendale Mandarin 5 11-oz. tins \$1
- Grapefruit Highway, broken segments. 5 303 tins \$1
- Pineapple Highway half slices. 5 1 1/2 flat tins \$1
- Fancy Corn Town House, Kernel 5 303 tins 89¢
- Kernel Corn Highway vacuum pack. 6 12-oz. tins 89¢
- Fancy Peas Town House plump 'n meaty. 6 303 tins 89¢

10c Bonus Offer

FREE coupon worth 10c toward the purchase of a large

CANTALOUPE

when you buy a half gallon of ice cream.

ICE CREAM

Snow Star, fine quality, vanilla, strawberry, chocolate, Neapolitan (3 flavors). Half Gal. 69¢

Resistant Bacteria Raise Hospital Deaths

Boston Science Service-The most important causes of severe infection and death in hospitals today are antibiotic-resistant bacteria. These now top the previously more fatal pneumonia bacteria and streptococcus type bacteria that proved susceptible to antibiotics.

In Boston City hospital in 1958, antibiotic-resistant Staphylococcus aureus, which causes boils, carbuncles and other inflammations, accounted for one of every five cases of infection and less than one of every five cases of death from bacteria-caused infections.

In 1957, it accounted for two-fifths of both infections and deaths. Dr. Maxwell Finland, associate professor of medicine at the Harvard Medical School and physician-in-chief of the Fourth Medical Service of Boston City Hospital, reported in the New England Journal of Medicine, increasing lethality.

Dr. Finland said that reliance on antibiotics may be responsible for increasing lethality in application of strict aseptic methods for avoiding infection and cross-infections in surgery nurseries and general wards in which infections are being treated. This lethality, he said, "is undoubtedly a major contributing factor" to the rise in staph incidence and fatality.

Research Spending Tops \$71 Million

Washington - (Science Service) - U.S. engineering schools have reported to the National Science Foundation here that they spent \$71 million for sponsored research and development in fiscal year 1959, the Foundation reported.

Of this, \$48,600,000 was given the schools by the Federal government. Industry supplied \$10,300,000. The schools themselves spent \$12,500,000 of their own funds for research and development. An additional \$3,500,000 of their own funds were used to cover the indirect, extra costs of grants and contracts mainly supported by outside sources.

The survey covered 128 engineering schools. Of the total spent, 57 per cent went for basic research. In the last study in 1954, only 45 per cent was spent on basic research.

Twenty of the schools reported spending a million dollars or more for research and development.

Circle of Elegance



Filet plus regular crocheted lace, elegant dolly that will win compliments galore for you.

Set your table with tulips-gracefully arranged in a border design. Center forms plus mats. Pattern 7237: crocheted directions centerpiece 18-inches by 18-in.

Send Thirty-five cents (coins) for this pattern - add 5 cents for each pattern for first-class mailing. Send to Medford Mail Tribune, Household Arts Dept., P.O. Box 188, Old Chelsea Station, New York 21, N. Y. Print plainly NAME, ADDRESS, PATTERN NUMBER.

JUST OUT! Our New 1960 All-ice Brooks Medford Book contains THREE FREE Patterns. Plus ideas galore for home furnishings, fashion, gifts, toys, casual sellers - exciting, unusual designs to crochet, knit, sew, embroider, bush weave, quilt. Be first with the newest - send 25 cents now!