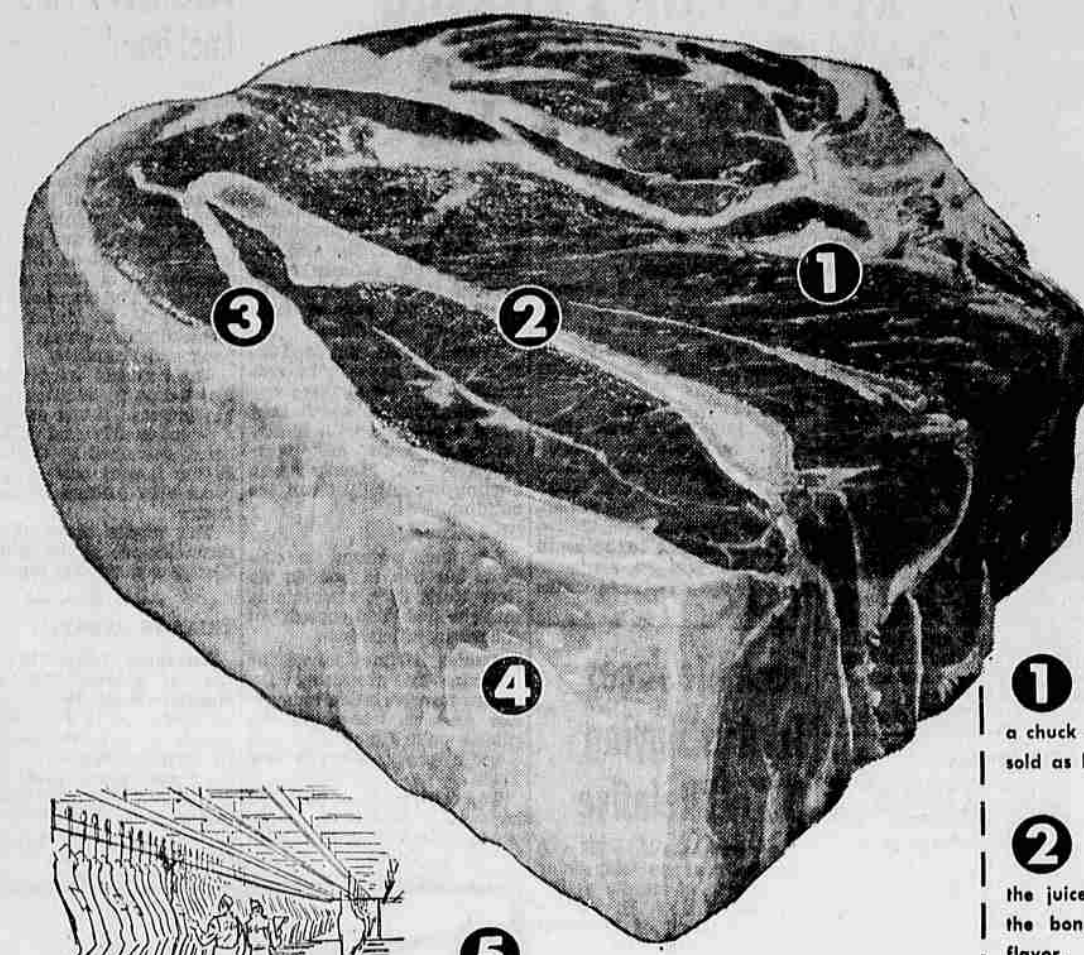




SMOKEJUMPER'S ATTIRE — Smokejumper Bill Carver wears the complete outfit of the U. S. Forest Service's airborne forest fire fighters. The experts at the pioneer Aerial Fire Depot at Missoula, Mont., employ a three-pronged attack—smokejumpers, helicopters and chemicals—to combat most fires in the northwest. The outfit worn by Carver includes a nylon suit, two parachutes, football helmet with wire face guard, and emergency signaling equipment. (UPI Telephoto)

Aerial Fire Depot Sharpens Attack For Forest Blazes

Missoula, Mont. — Experts at America's pioneer Aerial Fire depot here have sharpened a three-pronged attack—smokejumpers, helicopters and chemicals—to combat most fires in the northwest. The outfit worn by Carver includes a nylon suit, two parachutes, football helmet with wire face guard, and emergency signaling equipment. (UPI Telephoto)



There's more value, more good-eating meat in ...

Safeway Chuck Roast

See for yourself why you get so much more!

- 1 Note the larger proportion of lean meat to fat and bone. We never "rob" a chuck roast of lean meat (as some do), to be sold as boneless beef at a higher price.
- 2 There's bone, of course, but it's carefully trimmed. Grandma tells us that the juices which flow through the meat from the bone help give pot roasts their perfect flavor.
- 3 Just enough fat is left on a Safeway chuck roast to make sure it will cook tender, flavorful and juicy, and have that rich brown color you want in your pot roasts.
- 4 It's cut from "USDA CHOICE" beef. Only beef judged by expert U.S. Government graders to be of fine-eating quality is awarded this high grade.
- 5 Like all steaks and roasts at Safeway, this chuck roast has been carefully aged to peak of tenderness and flavor in our central meat plant.

Blade Cuts

Here's the buy you've been waiting for! Pot Roast at its finest and what a sensational price! Now's the time to stock up your freezer and SAVE! Another great S-DAYS value.

39¢

lb.



"USDA CHOICE" BEEF

T-Bone and Club Steaks

Another S-DAYS value! Enjoy steak at its best ... with the famous Safeway "close trim".

98¢

lb.



CHAIN REMOVED — John Henry Clay Perry Jr., 6, has a 20-foot chain and lock removed from his foot by Sheriff T. O. Lang. The boy was found in the home of his parents in Austin, Tex. They said he had been chained about four months to teach him a lesson. The boy was taken to the county juvenile home. (UPI Telephoto)

The Family Council

Editor's Note: The Family Council consists of a Judge, a psychiatrist, a lawyer, a newspaper editor, a woman's editor and two writers, each offering a summary of an actual case history. The Council reports on problems that have been dealt with by responsible agencies and consumers.

Isabel R. — I want to move to protect my boy, Charles R. The secret will come out anyway. I was divorced about ten years ago when I was 17 and it looks as though I'm going to be the cause of it for the rest of my life. I was divorced about two years after I married a good man, who has tried to be a father to my son by the first marriage. I also have three children by my present husband. Recently I learned that my ex-husband has been sentenced to a life term in prison for murder. He is well known in our community as my boy Frank's real father. I haven't told Frank anything about this yet. He never asks questions about his father. I want to move someplace where he'll never hear about it, but my husband is against moving.

Army Announces Nike-Zeus Tests

Washington-889—The Army has announced it will start full-range tests of "tactical type" Nike-Zeus anti-missile missiles from firing sites at Point Mugu, Calif., "early next year." Nike-Zeus is the only guided missile currently under development as a prospective weapons for defending the United States against intercontinental ballistic missiles. By "tactical type," the Army apparently meant it will test a full scale, three-stage model suitable for production — if production should ever be ordered.

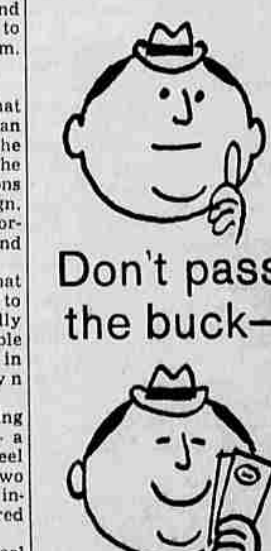
President Eisenhower up to now has confined the Zeus to high priority research and development. Continuing skepticism in scientific quarters about its ability to provide worthwhile defense has blocked an Army production go-ahead.

I am willing to adopt Frank and I'm ready to defend him against anyone who might attack him because of his father. I want him to know that, and he can't know it if we try to hide everything from him. It's got to be known.

The Council: It is likely that Frank knows far more than Charles and Isabel believe he knows about his father. The fact that he asks no questions isn't a particularly good sign. He probably senses some horror involving his father and fears facing it.

We agree with Charles that it is the nature of secrets to someday be revealed — usually in the most hurtful possible way. But the answer is not in forcing the truth down Frank's throat.

The answer lies in creating a happy home for Frank — a home in which he can feel secure in the love of two parents. It is fortunate, indeed, that this is being offered to the boy. Frank will undoubtedly feel some hurt in the course of his life because of his father, but these hurts don't have to scar him seriously. He can be brought to accept this misfortune in the same way other children must accept other family misfortunes. Because he is only a child, Frank will naturally take his parents' attitude toward his misfortune. If they shrink in fear of the opinion of others he will do the same. If, on the other hand, they can accept the broader religious view that there is good and evil in all of us and that we may choose one way or the other, they will do Frank the service of making him realize that neither he nor his father is basically different from other human beings. He will be able to deal with attacks from others if he can cope with the situation inside his own feelings. Copyright 1960, General Features Corp.)



Don't pass the buck— GIVE YOUR BUCKS to the Party of your choice! DIG DOWN! Contribute DIG IN! Work for your Party and VOTE!

FREE GROCERIES

We have a FREE gift coupon for the first 100 customers Tuesday morning, August 9. These coupons are redeemable for your choice of three famous Guaranteed Products listed on the coupon. Come in and receive your S-DAYS gift and save on the grand S-DAYS values.

S-DAYS 2ND WEEK S-DAYS

For Even Greater Savings ... WE GIVE VALUABLE

Gold Bond Stamps

S-DAYS Special To Stretch Budget Dollars!

Cherub Milk Limit 5 tall cans 10¢
Finest quality evaporated milk for all your cooking needs and baby's formula. Reg. 3/45c

Fruit Cocktail 5 303 cans \$1
Town House. Pieces of tree-ripened fruits in a heavy syrup. None finer.

Cottage Cheese 25¢
Finest Lucerne. Five varieties to please every taste. Quart 49c. Half gallon 98c.

Roxbury Mints 29¢
Choice of six varieties. You'll enjoy the grand assortment of Roxbury candies. "Kitchen Fresh" Candies pkg.

Marshmallows 29¢
Fluffiest. Light 'n' tender. 1-lb. pkg.

Flour KITCHEN KRAFT 10-lb. Bag 89¢
50-lb. Bag \$3.69 25-lb. Bag \$1.89

Apple Juice 3 46-oz. cans 89¢
Town House. Save 11c on 3.

Jam-Jelly 4 10-oz. jars 89¢
Empress Grape, Mixed Fruit, Apricot-Pineapple or Boysenberry.

Asparagus Town House cut spears 4 300 \$1

Pickles Zippy, Reg. or Kosher dills. Whole or sliced 3 22 oz. jar \$1

Sweet Pickles Zippy whole 3 12 oz. jar \$1

Zippy Relish Burger, Hot Dog, or Sweet style 4 12 oz. jars \$1

Black Pepper Crown Colony ground 4 oz. 49¢

White Magic SOAP
Reg. 69c. Combines detergent action with soap mildness.

Giant Pkg. 59¢

This is our Guarantee to you our customers. Every item Safeway sells is unconditionally guaranteed. If any purchase should dissatisfy, we will courteously return the purchase price to you.

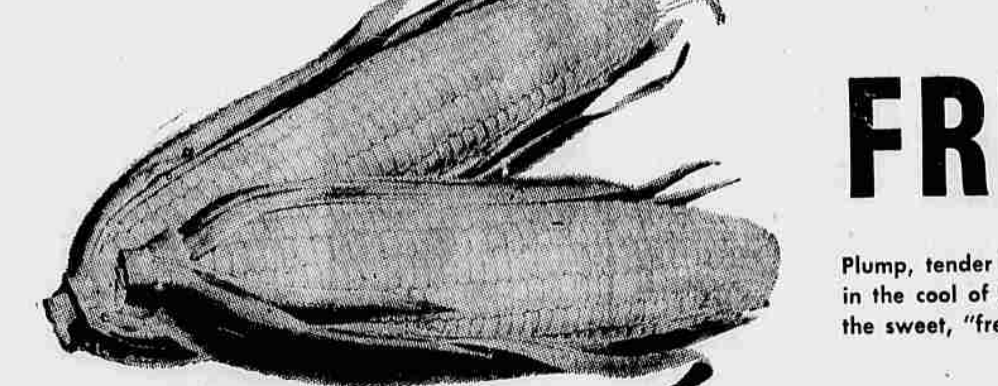
Round Bone Roast "USDA CHOICE" beef ... "Aged" and carefully trimmed. LB. 59¢

Cross Rib Roast Boneless "USDA CHOICE" beef. Grand flavor. LB. 79¢

Boneless Beef Stew "USDA CHOICE" lean chunks. LB. 79¢

Top Sirloin Steak Boneless "USDA CHOICE" beef. LB. \$1.29

Porterhouse Steak "USDA CHOICE" beef. Close trim. LB. \$1.09



10¢ BONUS
10c off on the price of a large cantaloupe when you buy a half gallon ice cream.

Ice Cream 69¢
Fine quality Snow Star. Vanilla, chocolate, half gal. strawberry or Neapolitan. Reg. 75c.

10¢ BONUS
10c off on the price of a large crisp head of lettuce when you buy a quart of Nu Made

Mayonnaise 59¢
Enjoy the rich whole egg goodness of Nu Made on salads and sandwiches ... none finer.

Prices in this advertisement are effective through Wednesday, August 10, at Safeway in Medford. We reserve the right to limit.

Canned Picnics Armour Star Boneless 3-lb. tin \$1.89

Skinless Wieners Safeway all meat 1-lb. pkg. 49¢

Meat Pies Manor House Tuna, Chicken, Turkey, Beef 5 8-oz. ea. \$1

Frozen Whiting Captain's Choice 1 1/2 lb. 39¢

Pork Sausage Safeway's own bulk lb. 49¢

Beef Cube Steaks "USDA CHOICE" boneless, no waste. lb. \$1.19

Grade "A" Turkeys Spotlessly clean 14 to 16 lb. hens lb. 39¢

Safeway Has the Finest Northwest

FRESH CORN

Plump, tender kernels ... full ears. This corn has been picked in the cool of the morning, refrigerated, and rushed to you. All the sweet, "freshly picked" goodness is yours.

10¢ BONUS
More "Garden Room" Features

Bartlett Pears Tree-ripened; wonderful flavor for salads and desserts. lb. 19¢

Crisp Celery Crunchin' good for salads and cool relish plates. lb. 10¢

Santa Rosa Plums Plump and juicy. A real treat for TV nibbling. lb. 19¢

No. 1 Potatoes Northwest White Rose. 25-lb. bag \$1.35. 10-lb. bag 59¢

PERSIANS CASABAS HONEYDEWS
Thick Meated, Vine-Ripened

10¢

lb.

