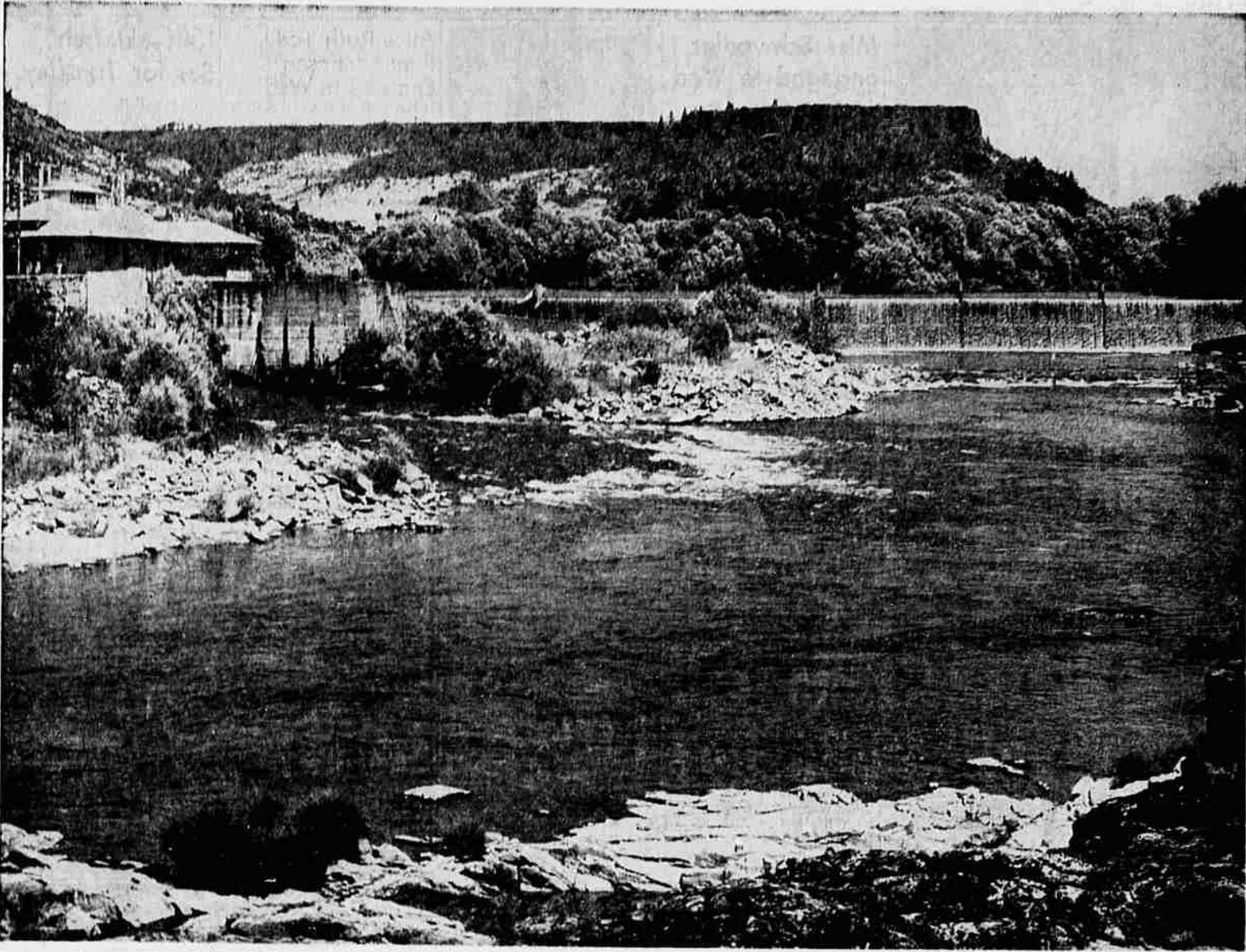
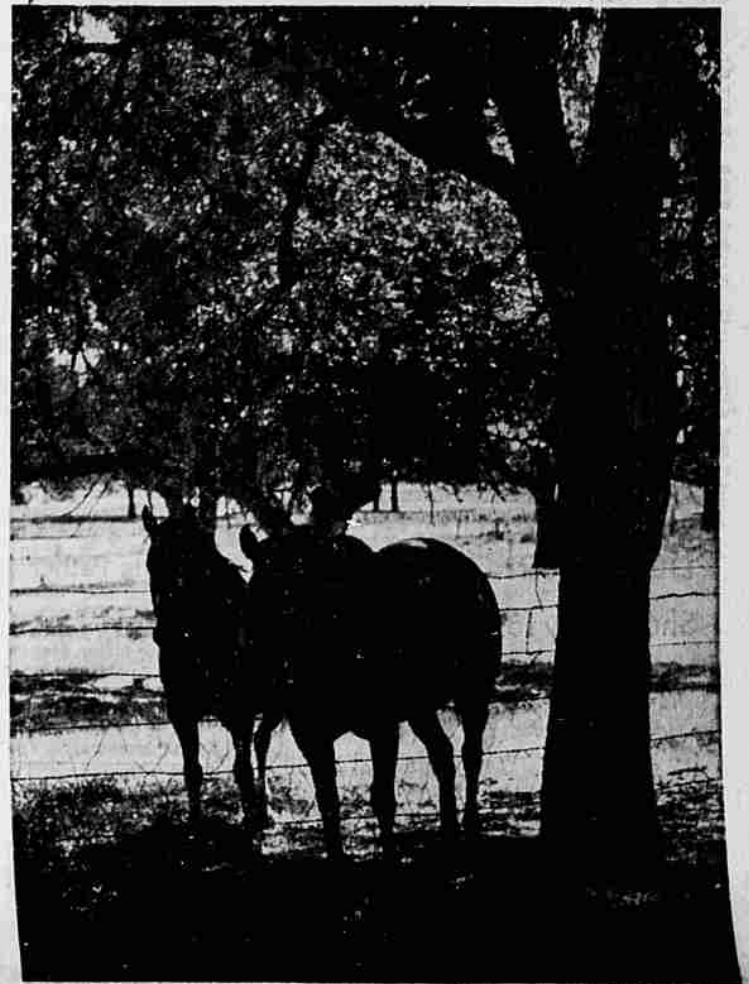


Summer Scenes



Among the scenes in the Rogue River valley that may be viewed by the summer traveler is the Gold Key dam on the Rogue river northwest of Medford. Dry rocks stand out in the summer sun in contrast with the white ripples in the water. Looking upstream one of the valley's famed Table Rocks looms in the background. The area may be reached by traveling the Old Pacific Highway, turning off at the Tolo overpass.



Two horses doze in the shade to escape the afternoon sun and watch travelers en route to the Medford municipal airport.



No air-conditioned building here! The summer traveler driving in the area sees many scenes like this where work goes on regardless of the temperature. Loading baled hay at the Otto Bahnert farm are Alvin Kroon, Douglas Paddock and Michael Shelley. Driving the tractor is Rickey Smith.

Photos by Knackstedt



A passing traveler may have frightened this young colt who hurries to its mother for protection. The horses are at the Clark Ballard property on Brookdale road and are among the many animals found along the roads by a summer traveler.



A herd of cows lolls in the summer sun undisturbed by the passing motorists on the road nearby. As temperatures climb in the communities throughout the county, residents may escape the heat by driving to the nearby forests.