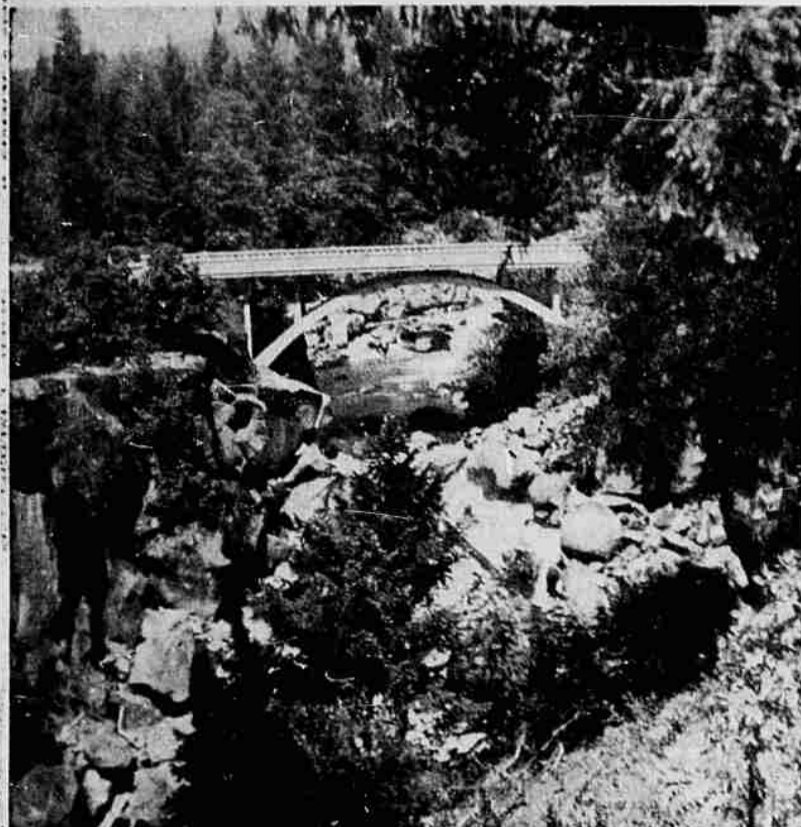


Union Creek Area Becoming Popular Place



ROGUE RIVER—Just south of Prospect, the Rogue river passes under the highway leading to Union Creek. Throughout the trip to Union Creek from Medford, the Rogue is seldom out-of-sight.



NATURAL BRIDGE—The Natural Bridge and an improved viewpoint complete with stairs leading down to the bridge have been constructed here.

Picnic, Camp Site Area Takes Name From Small Stream

By JIM FISHER

More than just a stop-over for vacationers bound for Crater Lake or Diamond Lake, the Union Creek recreation area located some 50 miles northeast of Medford is becoming popular with southern Oregon tourists.

The community took its name from the stream that heads near Crater Lake National Park to the east, flows through the area, and meets the Rogue river a short distance downstream.

Union Creek, in turn, was named for 7,698-foot-high Union Peak, a needle-sharp mountain in the southwest corner of Crater Lake National Park. This peak was named for patriotic reasons by a group of prospectors in 1862 after they had climbed the mountain.

Interesting Sights
Many interesting sights can be seen driving to Union Creek without leaving the main route of travel. A short distance south of Prospect, Mill Creek falls may be seen from the highway. A short trail leads down to just opposite the falls.

North of Prospect, the highway enters a forest area that rivals the redwoods for impressiveness and beauty. A gigantic sugar pine is marked for tourists to see a short way into the forest. A trail leads to the tree growing just a few feet from the main highway.

Four miles north of the mammoth sugar pine is the Natural Bridge forest camp. The Rogue river flows by this camp in a rocky channel and then passes under the natural rock bridge for which the camp is named.

For approximately 50 feet, the Rogue river flows under the natural rock formation and then emerges again. During the early spring, the water flows over the bridge, but by late June the water is low enough to pass under the bridge. At this time, bubbles appear in tiny pools of water on the bridge as air forced under the rock by the rushing waters tries to escape.

Recreation Development
The first recreation development of Union Creek was made in 1929 by the U. S. forest service. Two forest camps are located in the immediate vicinity.

Union Creek forest camp is situated along Union Creek between the highway and the Rogue river. Farewell Bend forest camp is located just north of the community near the Diamond Lake-Crater Lake junction. In addition, a picnic area has also been developed along Union Creek.

The community of Union Creek in its natural setting of tall trees is attractive in both winter and summer. Rustic architecture has been used in the construction of the resort, cabins, restaurant, service station, and ranger station. Estimates on the number of tourists that visit this community annually exceed 100,000.

Landmark at Union Creek
For more than 20 years, Becky's cafe has been a landmark at Union Creek for both tourists and local people. Home-made huckleberry pie made from berries collected on nearby Huckleberry mountain is only one of the attractions the cafe has to offer. With its rustic wood interior and pine-cone candle-holders, the cafe offers real outdoor atmosphere.

In between the forest camps along the Rogue river are summer homes built by families on forest service leased lots. Approximately 50 homes have been built in the Union Creek area.

For the ambitious fisherman, the Union Creek recreation trail leads east from the resort and follows the creek upstream for a little over three miles. The trail intersects the west entrance highway of Crater Lake National Park.

Rogue River Gorge
Just north of Union Creek is the Rogue river gorge. At this point the Rogue river enters a narrow rock gorge where the waters are tossed and churned as they fight their way through the small



VIEW OF FALLS—Mill Creek falls can be viewed from a marked viewpoint just south of Prospect. A trail leads from the highway to a better and more complete view of the falls.

passageway. The viewpoint for the gorge is well-signed and a short road leads to a parking area and the viewpoint trail.

A seasonal attraction to Union Creek is the ski area developed just north of the resort area along the main highway. Since under present safety regulations, tobogganing is not allowed on the ski area, plans are being made to develop a separate tobogganing area.

The Union Creek area is also attractive for persons interested in wildlife and trees. Bear, deer, and many smaller animals are plentiful in the surrounding forests. The great variety of tree species is interesting to many visitors. From beautiful stands of Douglas-fir, ponderosa pine, and sugar pine, the forest quickly changes to such species as lodgepole pine, alpine fir, and mountain hemlock as the elevation increases toward Crater Lake.

Important Question
Each summer an important question is asked by people from Medford to Klamath Falls, "Are the huckleberries ripe on Huckleberry mountain?" Once the berries are ripe, the migration is on as families gather at Huckleberry City forest camp to gather the annual crop. From time to time, a berry picker will work his way around a bush only to meet a representative of the local bear population working on the other side.

Tourists can receive information on the Union Creek recreation area by stopping at the ranger station located on the south end of the community. Groceries, souvenirs, and other supplies may be purchased from the resort concession. Cabins are also available for overnight visitors. A service station operating in the community is another business operating for the tourists convenience.

This Fourth of July, many tourists will be searching for new and different vacation spots to visit. The Union Creek recreation area is one place to visit to combine beautiful scenery and a variety of interesting sights.

West Coast Denied Non-Stop Flights
Washington—UPI—The Civil Aeronautics Board has denied the application of West Coast Airlines for permission to fly non-stop between Seattle and Portland, Ore., skipping over three stops now on that route.

The board said "Ample Portland-Seattle-nonstop services are presently available." Granting the request "would result in a downgrading of the services provided" at the intermediate points, the CAB said. The stops are Astoria, W. Ore., Aberdeen-Hoquiam, Wash., and Olympia, Wash.

New Bail Schedule Planned in Medford

Municipal Judge Alan B. Holmes is expected to issue a court order Tuesday that will put into effect a new bail schedule for traffic and criminal violations in the city of Medford.

The schedule is the same as the one which has been recommended by the Oregon supreme court, and which has been adopted by many other police agencies throughout the state.

The greatest change as far as Medford is concerned will be in the amount of bail to be posted for basic rule violations.

Persons accused of violating the basic rule will have to post \$10 bail for speeds up to 10 miles an hour over the speed limit; \$25 for speeds of 11-20 miles over the limit; \$50 for speeds 21-30 miles over the limit and \$100 for any speeds above 30 miles over the limit.

Currently the city is requiring \$10 bail for speeds up to 20 miles an hour over the speed limit and \$10 more for each additional 10 miles an hour above the limit.

Other amounts of bail to be posted for traffic violations under the new schedule are, \$5 for registration and licensing violations; \$10 for equipment defects; \$5 for pedestrian violations; \$20 for passing violations; \$100 for speed contests; \$150 for driving while license suspended and \$150 for hit and run violations.

Reckless and drunk driving violations are no longer being handled in municipal court. Prosecution for these two violations is being done in district court under a new state law which went into effect July 1. Bail for reckless driving is \$150 and for drunk driving it is \$300.

The minimum bail for all felonies will be set at \$1,000. All other violations will require \$15 bail.

Three Works of County Students In Art Exhibit

The works of three Jackson county art students have been selected for exhibit in schools throughout the United States. As part of the International School Art program sponsored by the American Junior Red Cross, the pictures are among the 150 representing the Pacific Area in the national exhibit.

"Table Rock Mountain," watercolor by Dick Day; "Trumpet Player," block print by Reinhardt Kostlin, German exchange student, and "Barn and Trees," a scratch board by Russell Lowery, were selected by the Pacific Arts association screening committee from 11 Jackson county entries.

Special mention was made by the screening committee of the entry of Tom Clark of Hedrick Junior High school—a seed mosaic called "Wild Goose." The excellency of his work was complimented, but it was returned to the chapter because the committee felt it would not withstand the shipping and handling.

Shipped Overseas
The pictures not used in national exhibits are shipped overseas to the 37 countries participating in the international program. In the last 12 years 60,000 high school paintings were sent abroad, 10,000 paintings were received in the United States.

This year 4,000 American paintings are being sent to Red Cross and Red Crescent Societies in the 37 countries and to the islands in the Pacific for which this country is the United Nations trustee. These paintings were contributed by students in schools enrolled in the American Junior Red Cross in 127 chapters.

The following works were also submitted from Jackson county: "Indian on Horseback," a water color by Dean Parrott, McLoughlin Junior High; a transparent water color by Terry Cunningham, Hedrick Junior High; "The Shoppers," a water color by Patsy Ritterspach, Hedrick Junior High; "Boat on a Lake," an oil by Keith Graham, Hedrick Junior High; "The Hunter," an oil by Rosanne Legas, Hedrick Junior High; "Horses and Barn," an oil by Martin Davis, Hedrick Junior High; and "House with Butterfly Roof," an architectural study by Garland Lowery, Medford High.

Try and Stop Me

By BENNETT CERF

ONE OF THE colorful figures in the gold-rush days in Alaska was "Soapy" Smith; a promoter with an amazing gift of gab. His nickname derives from his trick of wrapping (or seeming to wrap) \$10 bills around cakes of soap and selling them to suckers on street corners for 50 cents apiece. Occasionally a customer would get the cake wrapped in the ten spot—but it always was the same customer: "Soapy's" trusted "shill."

In Skagway the telegraph office took and received wires for \$5 apiece. It also wired funds home for miners who had struck it rich. Unfortunately, the nearest actual wire to Skagway was 600 miles away. The office was one of "Soapy's" enterprises. He also ran a medical center. Patients were examined for a nominal fee—but when they emerged from the office, their clothes and valuables were gone. Their kicks to the sheriff were not fruitful because "Soapy" was also the sheriff.

"Soapy" came to a fitting end—shot full of holes by an irate husband. He died with his boots off.

©1960, by Bennett Cerf. Distributed by King Features Syndicate



Conservationists Distressed Over Deer Losses in Canal

Local conservationists are distressed over the deer losses caused by the Howard Prairie delivery canal. Six deer have been reported drowned so far this year.

The canal, termed a "deer trap" locally, is constructed in a trapezoidal shape. This makes it nearly impossible for a deer to climb out once it has fallen in.

In its frantic attempt to escape drowning, the trapped deer batters its knees and forelegs against the canal's cement walls until it would be impossible for the animal to walk should it be able to escape.

One of the local conservationists, Col. Paul H. Welland, feels that the 200 five-foot-wide deer crossings which were built last winter are inadequate. He would like to see the canal either completely cemented over or fenced in.

Endorses Proposal
The local chapter on the Izaak Walton League has also endorsed the proposal that the trapezoidal section of the canal be covered.

"They propose that funds be made available through the Fish and Wildlife Coordination Act. However, Fred G. Aandahl, assistant secretary of the interior, said in a letter that the Talent project would probably be excluded from the benefits of the act.

"We are asking our field offices for information necessary for a conclusive determination of this point," he said.

Aandahl further stated that another aspect of the problem "is the degree of protection to be furnished for wild game as compared to protection for people within irrigation project areas."

"You may recall," he said, "that within the past few years efforts have been made to install protective fencing along both sides of the 'A' canal of the Klamath Project within and near the city of Klamath Falls.

Not Successful
"These efforts have not been successful. In considering that matter the Congress did not act favorably on legislation introduced to author-



DROWNED DEER—This doe is one of the six deer from the Green Springs herd which have drowned this year in the Howard Prairie delivery canal. Its feet and legs are worn off and bleeding from trying to escape from the canal before it became exhausted and drowned. Should it have escaped, it would have bled to death or been unable to walk, according to local conservationists.

ize the expenditure of Federal funds to finance the needed work."

To explain the department's position, Aandahl said: "Some wildlife and game management interests have been apprehensive regarding the canal's threat to the Green Springs deer herd from the outset. Responding to this interest the bureau of reclamation provided limited facilities for deer protection at the time the canal was built, but they proved to be inadequate last year when the canal was first operating.

Additional Crossings
"During the winter, additional crossing ramps were installed. Present installations provide crossings at an average spacing of 300 feet along the entire 17-mile length of the canal. These ramps are five feet wide, and particular attention has been given to areas where deer traffic is

expected to be heaviest. Differences of opinion exist as to whether presently installed facilities will provide the desired protection. Additional experience will be necessary to answer this question. We believe it would be premature at this point to conclude that such facilities are inadequate. On other projects where deer protection facilities have been necessary, game losses usually have decreased through desirable adjustments in the use and management of the facilities provided, and because the game animals have become accustomed to using them."

REBELS KILL 20

Medan, North Sumatra—UPI—Twenty civilians were killed early this week when an armed rebel band raked a bus with bazooka fire about 130 miles south of here, the army said today.

MEDFORD PAINT and Wallpaper Store
6th & Holly—Diagonally Across from Post Office
PHONE SP 2-9321
We Give S&H GREEN STAMPS

PAINT WITH Treasure Tones

Roseburg Man Hurt In Car-Train Crash
Roseburg—UPI—Robert Keith Stead, 38, Roseburg, was critically injured here early Friday night when his eastbound car collided with a northbound train.

Man Pleads Guilty To False Statement
Lowell Rogers, 5010 Crater Lake hwy., pleaded guilty to charges of making false statement in writing to procure benefit, and imposition was suspended for six months, a district court official said Friday.

The imposition of sentence was suspended on condition that the FBI report show no prior convictions, that Rogers remain in the county until restitution is made and that he appear for further proceedings on July 21 in district court.

BUCKHORN MINERAL SPRINGS
Ashland, Ore.

Enjoy health, rest, comfort, and hospitality amidst pleasant surroundings.

- HOT MINERAL BATHS for Rheumatism, Arthritis, Nephritis and Nervousness.
- CARBON DIOXIDE VAPOR BATHS for High and Low Blood Pressure, Sinus, and Skin Eruptions.
- LODGE AND LIGHT HOUSEKEEPING CABINS at Reasonable Rates.

Write for Reservations
PHONE LONG DISTANCE
BUCKHORN Mineral Springs
DR. HERMAN WEXLER, D.C. Director
2200 Buckhorn Springs Road
Ashland, Oregon

MEXICAN TACOS 24c • MEXICAN BURRITOS 29c . . . TACOS . . . BURRITOS

Jack's Drive-Up
911 NORTH RIVERSIDE—U.S. 99 NORTH
Open This Monday, July 4

CLOSED USUALLY ON MONDAYS

4th of July Bang!! Bang! Specials

POODLE DOGS
"The Dog on a Stick"
Baked in batter
Yum, Yum, Yum
2 for 29c
SAVE 9c

Delicious Cheeseburger
Plenty of Kraft melted Cheese
24c
SAVE 5c

SPECIAL 4th of July SUNDAE
Green Minted Pineapple
14c
SAVE 9c

BIGGEST, THICKEST DELICIOUS JUMBO SHAKE 21c
TODAY ONLY

"BECAUSE OF WINDOW SERVICE YOU PAY LESS"

PASTRAMI ON RYE 49c . . . PASTRAMI ON RYE 49c . . . PASTRAMI ON RYE 49c