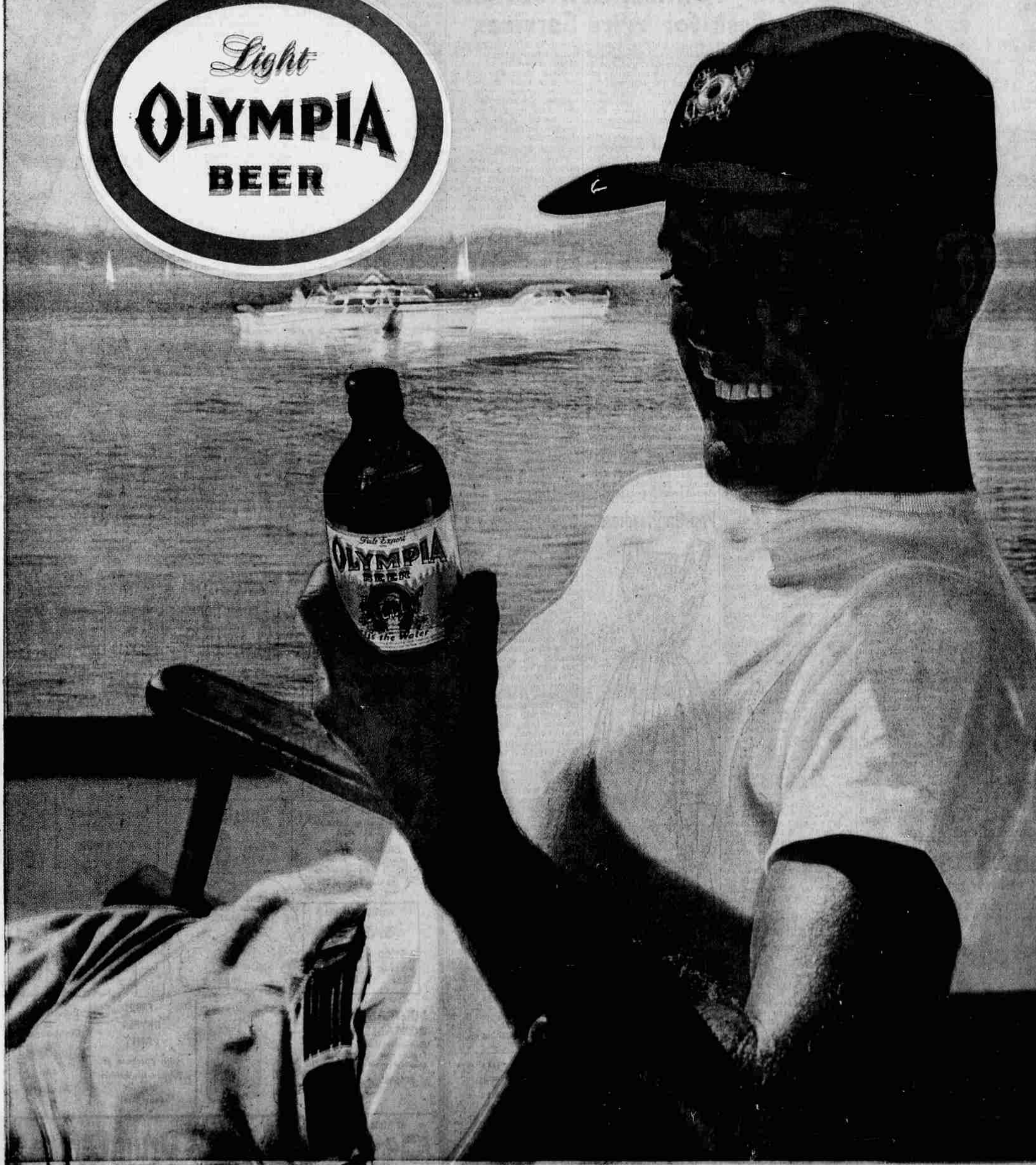


distinctive

A brisk and refreshing companion, light Olympia Beer is always "welcome aboard." Olympia's distinctive taste and character are assured by a naturally perfect brewing water—flowing cold and pure from our own artesian wells. This rare water has brought Olympia fame as a beer of uncompromising quality... and is why we say, *"It's the Water"*



Visitors are always welcome at the home of "America's Original Light Table Beer," Olympia Brewing Company, Olympia, Washington, U.S.A., 8:00 to 4:30 every day. *Oly *© H-15