



Small Worlds Around Us

By Lynn M. Watkins

Difference in Dirt? It's Relative
 What do you suppose is the difference between the dirt, which is so thoroughly despised by fastidious people, and the "good earth" that raises the food that feeds both the fastidious folk, as well as the slovenly?

Where is the difference between that material which you so indignantly sweep out of your house with the unanswered question, "Where does all the dirt come from," and the sand that makes a beautiful beach, on which you feel privileged to lay for hours?

Crumbs are Dirt
 A child eating a cookie is partaking of food. Yet the crumbs which drop from the cookie immediately become classified as dirt. Yet their identity or structure has not changed in the slightest. Actually the crumbs are still food.

Dirt then, must be relative. It is dirt only in connection with something else. Anything may become dirt when we have no use for it; it is then, matter out of place, regardless of its individual character. The dirt that soils your clothes is the same material that raises the food you eat, or the carpet you lay on on the beach. Around and around she goes, and in this endless circling, we call the same material many different names, depending on the place we find it, or how much there is of it.

I remember once viewing a very beautiful picture. The artist had incorporated a wide expanse of sloping beach; a very blue sky, through which a few white, cottony clouds were drifting; a strip of azure water, on which the sun was glistening, and a lone palm tree, sloping gently over the ocean's edge.

Looking at this sea-scape, I could visualize myself standing on a lonely shore looking out across the open sea to the horizon. I could almost believe that the white clouds were moving slowly across the azure bowl of the sky. It looked so real that the reflected glint of the sun seemed almost to dance on the rumpled surface of the water.

Startling Reality
 Even the wide expanse of beach looked real; by the artistry of brush and oils the artist had given it a reality that startled me. I could almost distinguish the individual grains of sand. There were small depressions here and there that gave mute testimony that this now lonely beach had lately known the presence of people, who had walked here, and left their foot prints in the sand.

Although I knew that such a picture lost its impact when viewed from a close distance, I wanted to see who the artist was who had captured the spirit of such a scene. His name I could read, but there in unmistakable letters was the name of the picture. It was named, "Spinich."

For a while I was puzzled. It took me a while to figure out what such a name meant when applied to such a lovely painting. Then it came to me: the artist had named it spinich because there was so much sand in it.

Hatfield Asks Big Budget Cut

Portland - (UPI) - Gov. Mark Hatfield here Friday instructed the public welfare commission to aim at a 1961-63 biennial budget almost \$8 million less than the 1959-61 budget.

Hatfield told the group to shoot for a budget of \$81,951,322. The 1959-61 budget was \$7,714,943 higher.

Public Welfare Commissioner Gerson Goldsmith moved to appoint a subcommittee to meet the welfare staff members to study the possibility of such a budget cut.

Bend Woman Dies At Old CCC Camp

Idaho - (UPI) - A Bend woman visiting her brother at an old Civilian Conservation Corps camp near here was found dead in one of the dwelling units about noon Friday. Marion County Coroner Charles Edwards said it appeared Clara Golden, 59, died of natural causes.

Police said she came here about a month ago to visit her brother, Bill Golden, who operates the old camp as private residences. She lived in Bend with a sister and brother-in-law, Mr. and Mrs. William Bisbee.

Your "Dream-Come-True"... from Gray's Furniture!
17-Pc. "Cinderella" Group

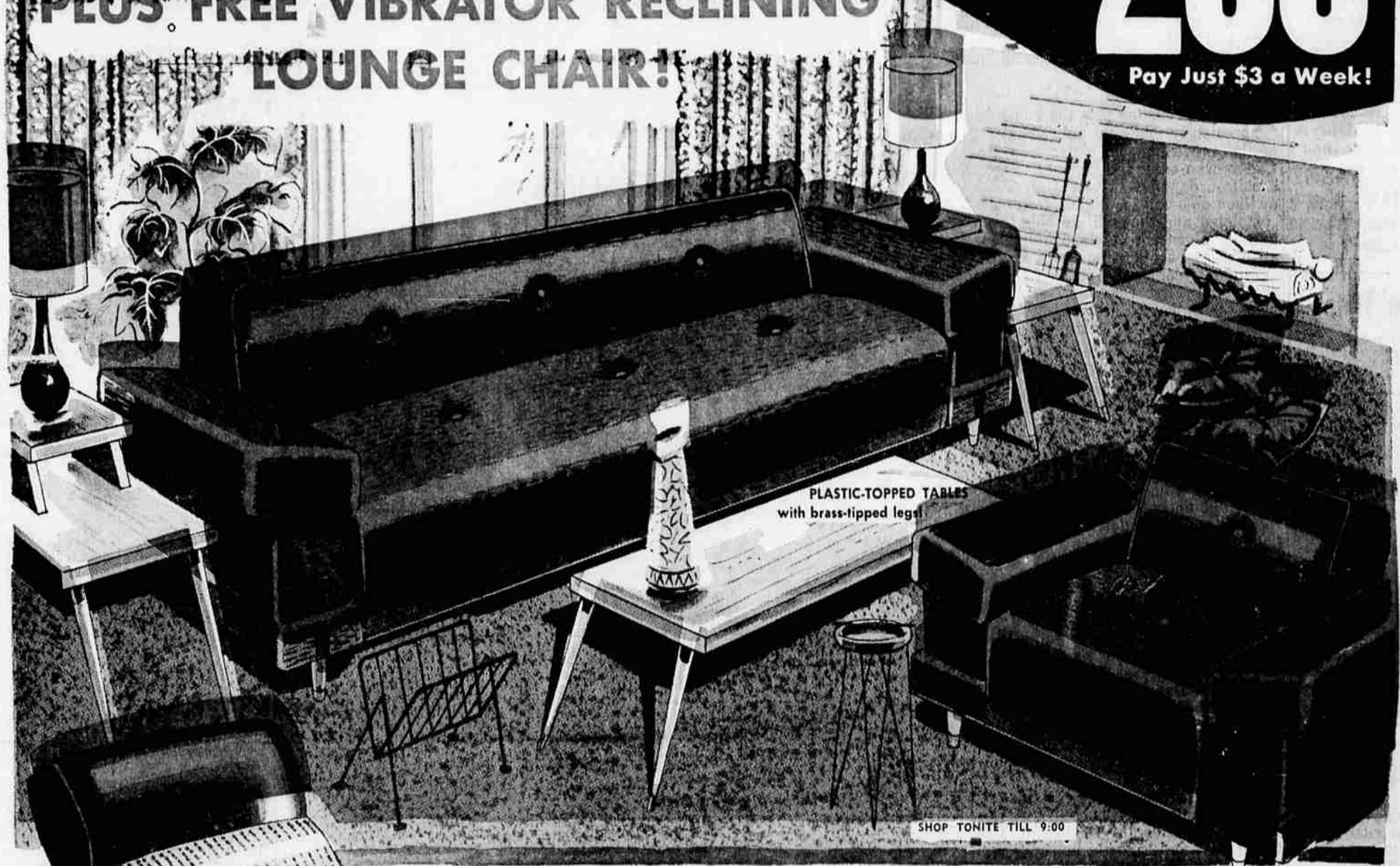
Including Draperies and Carpeting...

PLUS FREE VIBRATOR RECLINING LOUNGE CHAIR!

A Regular \$400 Value!

only \$ **288**

Pay Just \$3 a Week!



PLASTIC-TOPPED TABLES with brass-tipped legs!

SHOP TONITE TILL 9:00

17-Pc. "Cinderella" LIVING ROOM GROUP

For today's modern active families, here is furniture that loves to be used, that actually shrugs off wear! The luxurious sofa in durable frieze metallic fabrics has tough double spring construction plus a 5-year guarantee. It seats four comfortably, opens easily to make up into a restful double bed. Balancing your living room are the spacious matching club chair PLUS the FREE gorgeous reclining lounge chair that easily adjusts to your every position - this is a real opportunity to enjoy healthful relaxation for years to come! The "Cinderella" group is beautifully completed with the living room accessories listed right. Yes, here is functional, correlated furniture, styled for beauty and long wear and surprisingly low in price.

HERE'S WHAT YOU GET:

- Luxurious sofa that sleeps two! Your choice of beige, lime green, Chinese red, charcoal, brown or aqual
- Matching club chair!
- Vibrator reclining lounge chair!
- Cocktail table in blonde, mahogany or charcoal!
- 2 matching step-end tables!
- 2 decorator pillows!
- 2 pair color-coordinated draperies!
- 2 pictures!
- 2 smart table lamps!
- Smoking stand!
- Magazine rack!
- 9x12 shag rug!

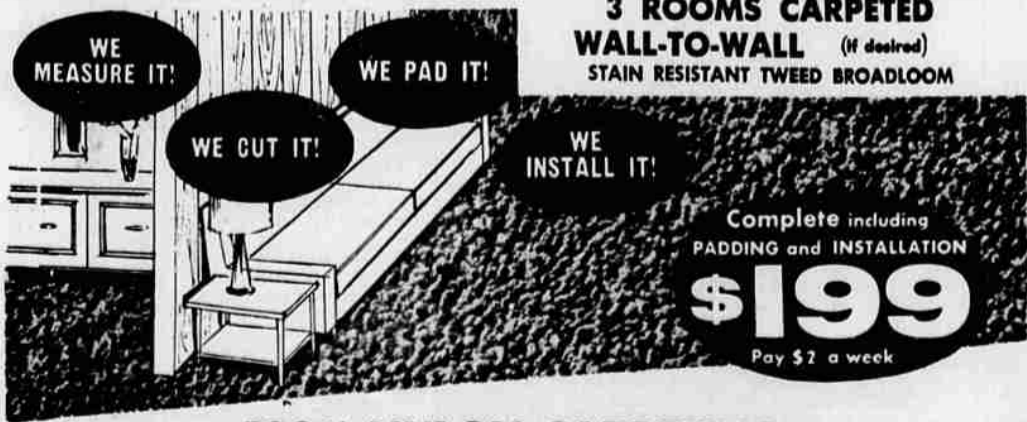
FREE DELIVERY anywhere in OREGON or WASHINGTON!

Phone NO 4-1226

\$5 DEPOSIT holds any group for future delivery!

Now's the time to . . . CARPET YOUR HOME

3 ROOMS CARPETED WALL-TO-WALL (if desired) STAIN RESISTANT TWEED BROADLOOM



Complete including PADDING and INSTALLATION

\$199
 Pay \$2 a week

100% NYLON CARPETING

Prices include:

HEAVY WAFFLE PADDING!

ALL SEWING! ALL LABOR!

COMPLETE INSTALLATION!

These prices based on 30 sq. yd.

★ **OPEN TONITE TILL 9** ★

also Your Choice 3 ROOMS COMPLETELY INSTALLED WITH CARPETING 100% All Wool Tweed Broadloom

\$279

Only Pay only \$3 a Week!

Call Gray's Furniture NO 4-1226

for **EVENING APPOINTMENTS**

We will gladly come to your home to MEASURE YOUR CARPET and give free estimates!

GRAY'S FURNITURE BARN Lots of FREE PARKING!

Hiway 99-Central Point