

Studies of Sheep May Solve Human Pregnancy Ills

Los Angeles—(Science Service)—Experiments with sheep may provide a clue to the mystery of toxemia of pregnancy—one of the major causes of death in expectant human mothers.

A research team, Dr. Nicholas S. Assal and Lawrence Longo, University of California Medical school, Los Angeles; Dr. Louis W. Holm, University of California, Davis; Dr. Yale Katz, University of Southern California, and Dr. Leon C. Chesley, State of New York university, is investigating a toxemia-like disease which occurs spontaneously among pregnant sheep.

Nine of 10 symptoms of human toxemia, whose cause is unknown, are found in the sheep disorder. These include the fact that the disease occurs sporadically during the latter part of pregnancy in both humans and sheep, occurs more frequently in short, obese types, is more frequent with large or multiple fetuses, manifests itself in prominent nervous system and visual disturbances, convulsions and coma, a rapid improvement is noted in both humans and sheep following delivery.

Mysterious Disorder

One mystery about sheep toxemia is that high blood pressure, a characteristic of human toxemia, does not occur. This difference is being investigated at the present time. Spontaneous toxemia among sheep seems to be associated with lack of exercise. Physical stress such as snowfalls and rainstorms may precipitate the sheep disorder by a mechanism not yet clear.

So far the study of the disease in humans has not been productive as to its cause or cure. The disease can now be produced experimentally in sheep, which are genetic and easily managed animals for experimental work under carefully controlled conditions. For this and other reasons, sheep studies may be more profitable and help to determine the cause of human toxemia.

Poor Italian Town Uses Barter System

Valle Agricola, Italy—(AP)—Money is hardly ever seen in Valle Agricola, one of Italy's poorest towns. The town is so poor that it uses the ancient system of barter, rather than money.

For instance, a man can pay for a haircut at the town's only barbershop with three onions or a dozen eggs. A shave costs one cauliflower.

Some people say the town of 1,200 people may be the poorest in Italy. At least it is the only town so poor that it is exempt from paying taxes.

The town, 30 miles from Naples, is located atop a 2,200-foot mountain and is surrounded by rocky land from which most of the residents squeeze out a bare living.

The richest man in town is Giuseppe Rialto, 70, who gets a \$100 monthly pension for disabilities suffered in World War I.

Raking Reported Good for Lawns

East Lansing, Mich.—(AP)—Don't spare the rake on your lawn.

Raking and fertilizing of lawns are recommended by James Tyson, extension turf specialist at Michigan State University.

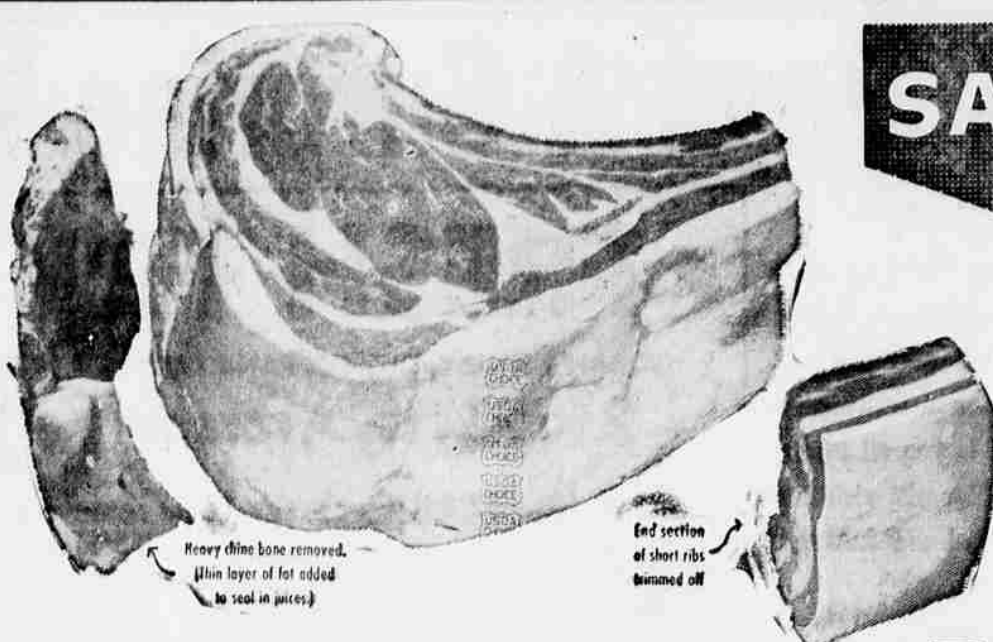
Raking should be done with a steel garden rake to remove sticks, stones, leaves and other debris which accumulate.

In addition to being good for the lawn, this will help keep the lawn mower in good condition by eliminating the cause of nicked or broken blades.

Feeding your lawn with the proper fertilizer is the most important, however, according to Tyson. You can determine which fertilizer your lawn needs by having the soil analyzed.

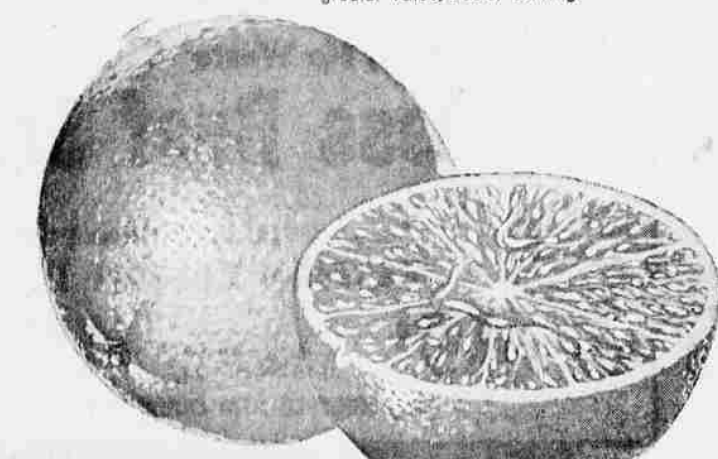
Numbers Don't Lie

Burlington, Vt.—(AP)—University of Vermont scientists applied psychology to mathematics and came up with the following: Good mathematicians tend to be co-operative, conscientious, responsible, honest, sincere, independent, enterprising, active and outgoing. Poor mathematicians tend to be inhibited, passive, impulsive, disbelieving, submissive, shrewd, wary, unassuming, awkward and defensive.



There's More Value on a Safeway Standing Rib Roast

We start with nothing less than "USDA CHOICE" beef... bring out peak tenderness and flavor through scientific aging. Trim it, as shown, for greater value, easier carving.



ALWAYS THE BEST AT SAFEWAY

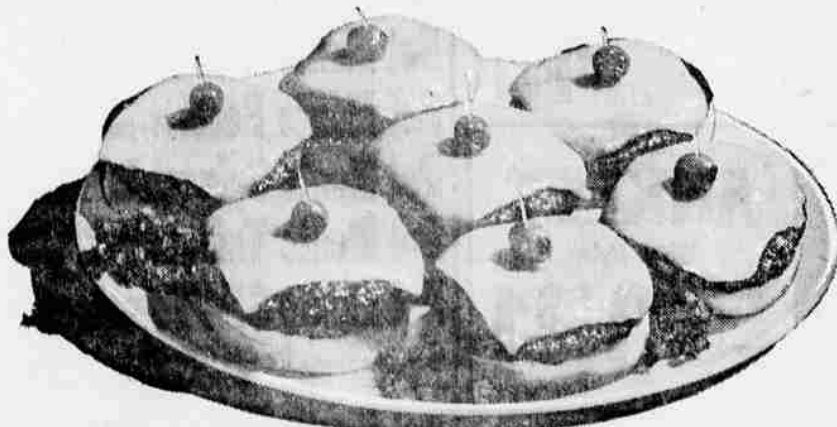
Our buyers go right into the orchards to select the "pick of the crop" for your table.

In oranges, too, you are always assured of nothing less than the finest at your Safeway store.



SAFEWAY CUCUMBERS ARE "SALAD PERFECT"

For a cool, crisp summer salad, there's nothing like cucumbers from Safeway. Each and every one guaranteed to be of finest quality.



IT'S CHEESE BURGER TIME! Start with Safeway's own 100% pure ground beef on extra-lean ground round. Add a slice of "Safeway" natural cheddar cheese. Top with a pimento-stuffed olive. Here's a tasty, colorful treat your family or guests are sure to enjoy.

"Safeway" Mild Cheese

Natural mild cheddar in 12-oz. snack bars, 20 and 28-oz. loaves. Factory sealed in air-tight packages to protect its superb quality. You can't buy finer quality. All packages are re-weighed at the checkstand to assure full weight. Regularly 69c lb.

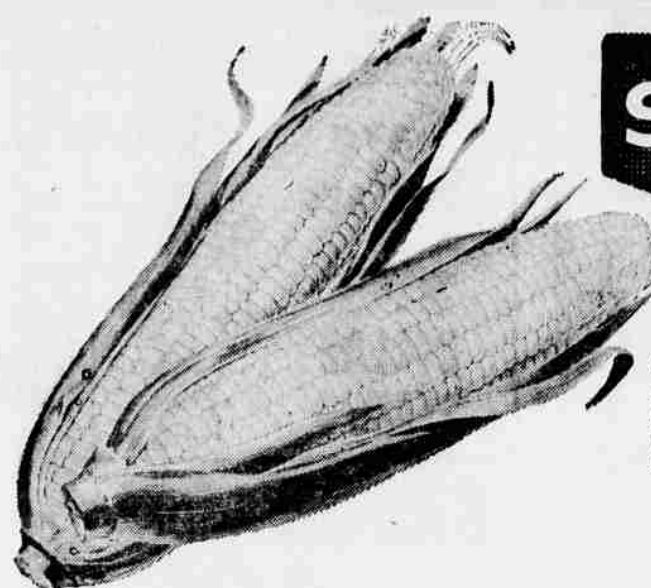
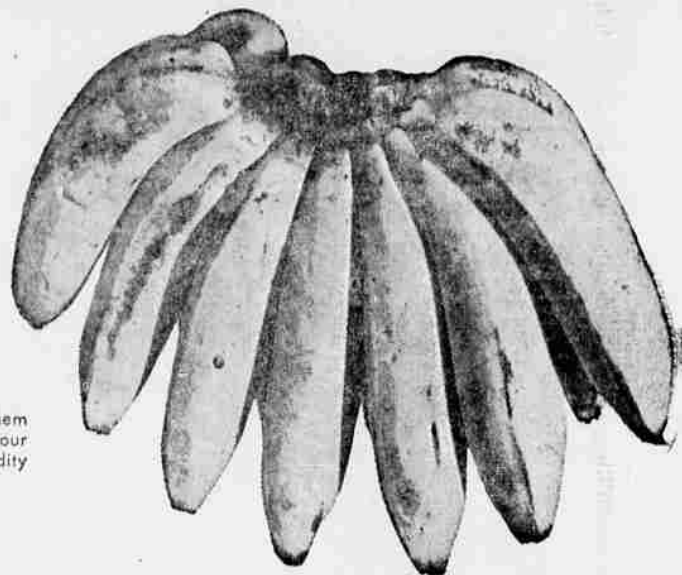
Per lb. **49c**

Prices in this advertisement are effective through June 26th at Safeway in Medford. We reserve the right to limit.



BANANAS ARE RIPENED A BETTER WAY AT SAFEWAY

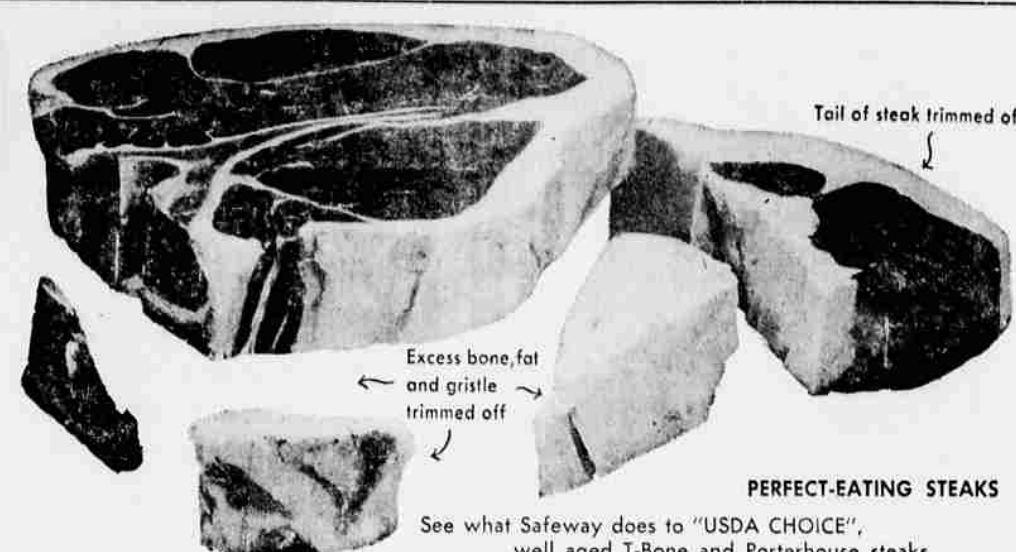
We ship them in green... bring them to the perfect stage of ripeness in our ultra-modern temperature and humidity controlled ripening rooms.



SAFEWAY

SWEET CORN IS SWEETER

Every golden kernel is tender and milky because Safeway corn is picked early in the morning before the hot sun robs the delicate flavor and goodness.



PERFECT-EATING STEAKS

See what Safeway does to "USDA CHOICE", well aged T-Bone and Porterhouse steaks (before weighing) to give you more "good-eating" meat for your money.

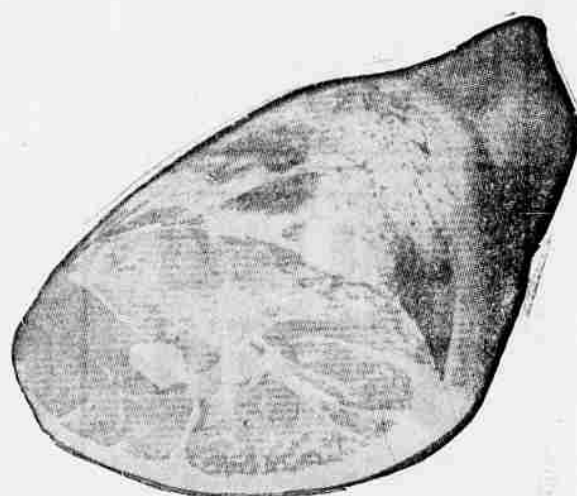
DEPENDABLE QUALITY ... a sure thing at SAFEWAY

These Summer Meats, Fruits and Vegetables are sure to please... We GUARANTEE they will, or we'll give you back your money!

HAMS

Swift's premium, fully cooked, skinned hams with the bone in. Ready to eat "AS IS". Serve either hot or cold.

Whole or Full Shank Half **55c**
Full Butt Half lb. **59c**



Round Steaks

& Swiss Steak, full or half, and Rump Roast with bone in "USDA Choice" beef. **89c** lb.

Cross Rib Roast

"USDA CHOICE", well-aged beef or Boneless Stew Beef. **79c** lb.

Pork Loins

Rib or loin end roasts, 2 1/2 to 3 lbs. **49c** lb.

Pork Chops

Loin and rib end, center cuts. **79c** lb.

Sliced Bacon

Del Monte "Sweetheart". 1-lb. pkg. **55c**

Pot Roast

All blade and 7-bone cut "USDA CHOICE" beef. **55c** lb.

Cane Sugar

Reg. \$1.18 CANDI CANE, the finest quality pure granulated. A favorite for all of your table and canning needs.

10 lb. bag **79c** (Limit 1 Please)

Lucerne Butter

U.S. Grade "AA" sweet-cream guaranteed fresh by Safeway.

1 lb. pkg. **69c**

Highway Catsup

Big family size. Why pay more?

4 20-oz. bottles **\$1**

TOMATOES



Vine-ripened beauties... perfect for slicing in your favorite salads, sandwiches, etc. Grand with sliced bacon or burgers.

per pound **19c**

Sunkist Lemons

Large size. Full of juice. doz. **49c**

Cantaloupes

Large jumbo. Size 36's. **5 for \$1**

Green Cabbage

Green for cole slaw. lb. **10c**

Ripe Peaches

High-colored. lb. **19c**

Fruit Cocktail

TOWN HOUSE fancy quality. Reg. 4 for \$1.00 value. (Limit 5 please)

5 3oz. tins **89c**

Gelatin Desserts

JELL-WELL 7 flavors to choose from

4 3-oz. pkg. **29c**

Pooch Dog Food

Regular or liver flavor. Reg. 12 for \$1.00

12 1-lb. tins **89c**

FROZEN LEMONADE

With SCOTCH TREAT you just add water... mixes instantly into a huge quart of refreshing summertime fruit drink.

9 6-oz. cans **\$1**

CARAMEL NUT ROLLS

This week's big Curly feature is delicious oven-fresh rolls covered with caramel topping and candied nuts.

Pkg. of 6 **35c**

ICE CREAM, Sno Star

Choose from four delicious flavors. Fine quality, smooth texture, and rich in dairy goodness. Half gal. **69c**

MIXED DONUTS

Mrs. Wright's Oven-Fresh Baked fresh daily—then sealed in air-tight packages. Grand for tasty snacks, and meal-time treats.

Doz. **39c**

Liquid Ivory

Soap for fine fabrics. 22 oz. pkg. **73c**

Tide

Washday detergent for automatic washers. 19 oz. pkg. **37c**

Gamay Soap

White, pink or blue. Reg. bars. 3 for **36c**

Chicken

Lynden. Slices for salads, sandwiches. 5 oz. **53c**

WE GIVE **Gold Bond Stamps**



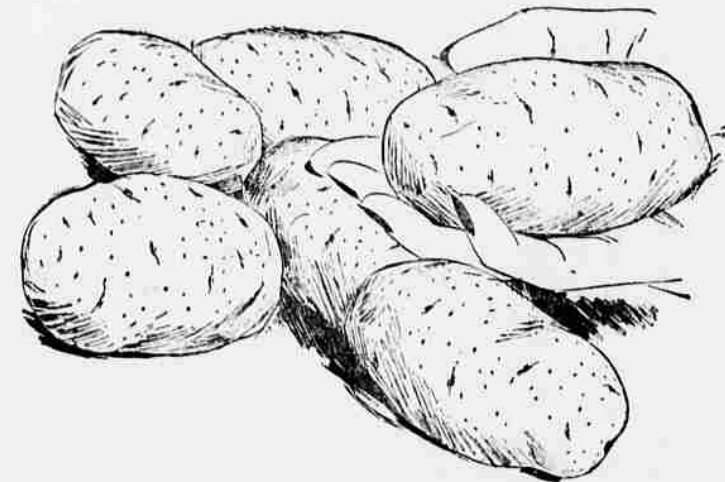
FREE COTTON CANDY

Made From Oregon's Own WHITE SATIN SUGAR

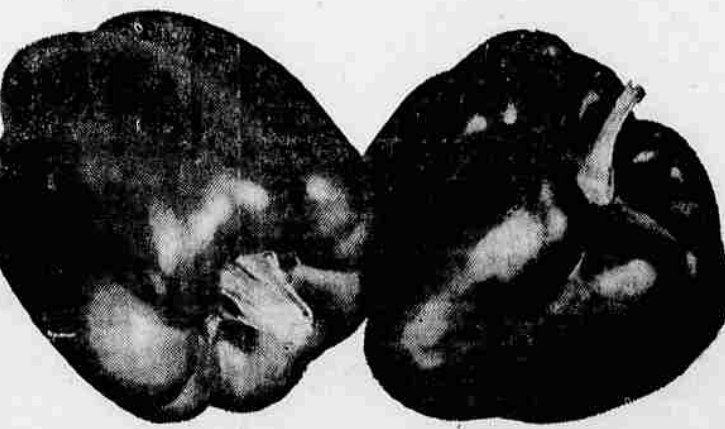
Friday and Saturday

June 24-25 - 10 A.M. - 6 P.M.

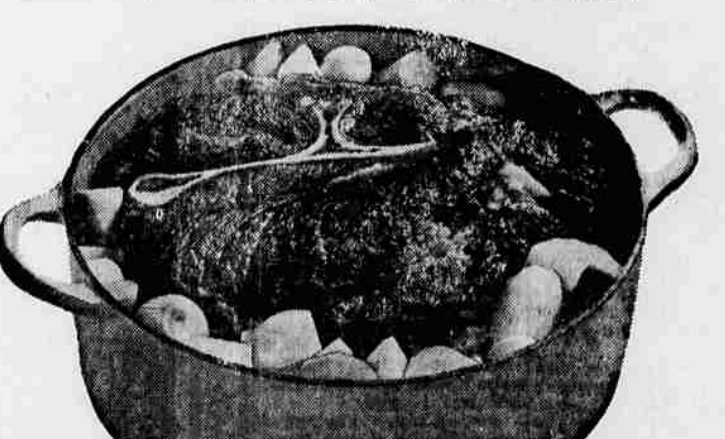
Children Must Be Accompanied by Parents



EVERY POTATO GRADED BY HAND They're tubbed and scrubbed, thin-skinned, with shallow eyes for easy peeling. Our U.S. No. 1 potatoes are guaranteed perfect... every one!



SUMMER MEAL FAVORITE... Plump, bright green bell peppers stuffed with Safeway's 100% pure ground beef. Really scrumptious!



THERE'S MORE GOOD EATING MEAT ON THIS POT ROAST Every blade cut or round bone Safeway "USDA CHOICE" beef pot roast contains all the meat that rightfully belongs on these cuts. We don't trim off large portions to be sold as boneless pot roast at a higher price per pound. Carefully aged for perfect tenderness and flavor.

EGGS AA LARGE

Guaranteed Fresh **2** doz. **95c**

JOHNSON'S MODEL BAKERY
Cinnamon bun, Coffee cakes **Small 39c, Large 49c**
Apple Pies **59c each**
All 30c cookies, 4 doz. **\$1.00**

BABY FOODS

Save on Gerber's 36 varieties of strained vegetables, fruits and fruit juices. Another big weekend value at Safeway.

10 59c (Limit 10 Please)



Irregular Heart Can Cause Many Other Troubles

Los Angeles—(Science Service)—The action of an irregular heart may cause all kinds of trouble—including blood starvation and perhaps severe damage to brain, kidney, stomach and intestines.

Using a "space age" electromagnetic flowmeter, Dr. Eliot Corday and David W. Irving of the University of California Medical School and Cedars of Lebanon Institute for Medical Research have demonstrated that irregular heart action can reduce blood flow to these organs by as much as 75 per cent.

Irregular heart action includes premature beats (extrasystoles) and racing heart (tachycardia). Such irregular action may be caused by coronary heart disease, an overactive thyroid, or other factors.

When such action occurs, the heart chambers do not fill up enough. The heart pumps virtually empty, failing to send sufficient blood supply to other organs. Even after heart action has been returned to normal by medication, the blood flow to other organs may remain reduced for as long as two hours.

Such a reduction in the brain may bring on a stroke with attendant paralysis or mental disturbance. In the stomach, impaired blood flow may cause distention or ulceration. In the kidneys decreased function will follow.

Drug Use Urged

The investigators urged that physicians make every effort to prevent irregular heart action by use of proper drugs now available.

The flowmeter used in the study is based on the principle developed by Dr. Alexander Kohn, UCLA biophysicist. It is connected to computers (of the kind used to guide space rockets) which help to figure the complex mathematics of flow problems.

The research was supported in part by the Ventura and Santa Barbara County Heart associations.

Laughing Helps To Cut Tensions

East Lansing, Mich.—(AP)—To get along in the present world of tensions and troubles, you have to learn to laugh and cut the tensions.

That is the advice of Betty Garlick who heads a nursery school at Michigan State University and in her work, has picked up some pointers on what can make kids laugh.

One way to encourage humor is to let a child hear songs, stories and poems bordering on the humorous—and enjoy them yourself.

Miss Garlick suggests adults laugh at "jokes" of children even though they may not be funny. It helps the children.

Russian Grass Thrives in U.S.

Fort Collins, Colo.—(AP)—Agronomists for Colorado State University here have found at least one Russian import that thrives on Colorado dry land.

"One of the best grasses we have for dry land," is how associate agronomist A. D. Dorenko describes a variety of Russian wild rye known as Vinal, in honor of the late H. N. Vinal, a former U.S. Department of Agriculture official who introduced the perennial pasture grass to this country.

The Vinal grass is actually a refinement developed by scientists at the agriculture research service's northern Great Plains field station at Mandan, N.D.

Bears Up a Tree Cause Problems

Newport, Ark.—(AP)—Three bears up a tree almost turned the household of Mrs. John Keel upside down recently.

They made a coward of her once fearless Dalmatian and brought a crowd of 75-100 persons stomping all over her lawn. The crowd even kept Keel's tractors from crossing the road.

Efforts to chase the bears away proved futile. They even failed to acknowledge two jars of honey placed on the ground. The bears left when they were ready.

GLASS HOUSE
United Nations, N.Y.—(AP)—There is good reason why the United Nations often is referred to as "the glass house." It has 5,400 aluminum-framed windows in its 15-story headquarters building.