

Family Council

Editor's Note: The Family Council consists of a Judge, a psychiatrist, a newspaper editor, a women's editor and two others. Each article is a summary of actual case history. The reports on problems that have been dealt with by responsible law and counselors.

Editor P. - Dick's partner is all over him.
Editor C.P. - I'm no sap.

Editor P. - My husband and I were in our early 20s and had been married a year. Only serious problem in our life was a new business venture my husband started. I advised Dick to go into things alone, but he insisted that he needed a partner. He took a man named Jonathan, who is quite a few years older than we are and thinks he can walk all over us.

Dick now admits I may have been right, but says it's too late to do anything about it. He must take a much more realistic attitude and let Jonathan know he can't walk off with the whole show. But by the time I try to get him back to his senses he gets angry at me and says I cause him trouble between them. I'm only trying to help.

Editor C.P. - I don't like being led around by anybody. Includes my wife as well as my partner. She takes me for a prize sap and thinks I'd my shirt if I didn't have to look out for me. It even if my wife thinks wishy-washy, my partner is to think I'm overbearing. The fact is that I've made a rational decision without consulting him and he has it in me because of that.

It happens that I really like Jonathan because he has quite a bit of business experience. Aside from that, as everything to gain and avoid to lose by making a decision of our enterprise. Sometimes I am suspicious of but I don't think he can anything over on me and away with it because of legal angle.

The Family Council shows a mutual desire to prove himself and be on his own. This is all to the good, but his of being "pushed around" as his lack of confidence. Dick should decide for himself whether or not he trusts Jonathan. If he doesn't, he should get out of the situation if he must take a loss, a young enough to make up.

On the other hand, he trusts his partner, he must make every effort to cooperate in a mature manner. For example, he was dead when he made decisions without consulting his partner. We suspect he made decisions when egged on by his wife. He had an idea to show that he held the reins, but the way he proved he isn't ready to hold the reins by himself. Jonathan is an honest man. Dick is indeed lucky to have him as a partner. Ethel should also recognize this. Ethel gives no reason for her distrust of Jonathan. She is to fear him as an older, wiser person. She reveals a lack of confidence in her husband. This is certainly a slip to him in building his

the whole, Ethel's attitude is that of an overprotective mother who is sure her little boy will get in the harsh, cruel world. Ethel rightfully resents this, she protests in a childish, rebellious manner.

Dick should learn to examine carefully, then act on in a rational manner. Dick should accept his mistakes with good grace and chalk up to experience. He should learn to listen to those who have real knowledge and not feel "pushed around" by them.

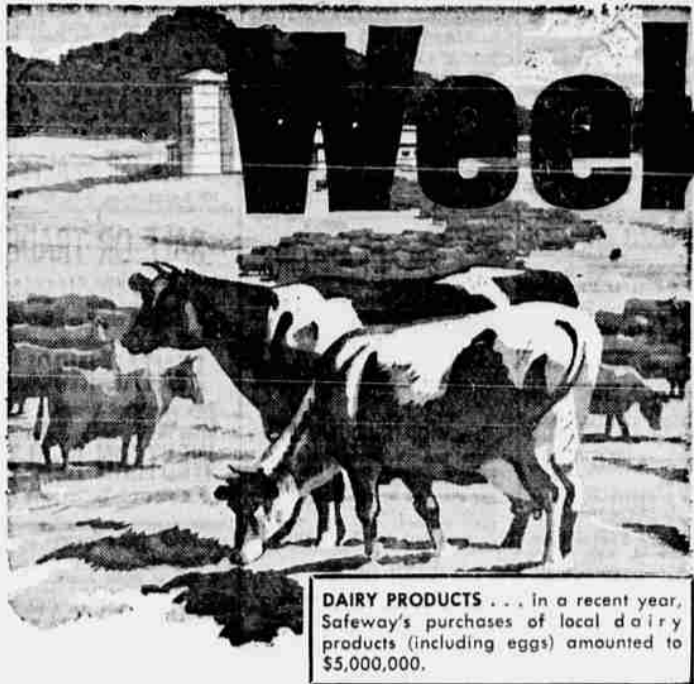
Copyright 1960, General Features Corp.)

Local Rhubarb of Estimate

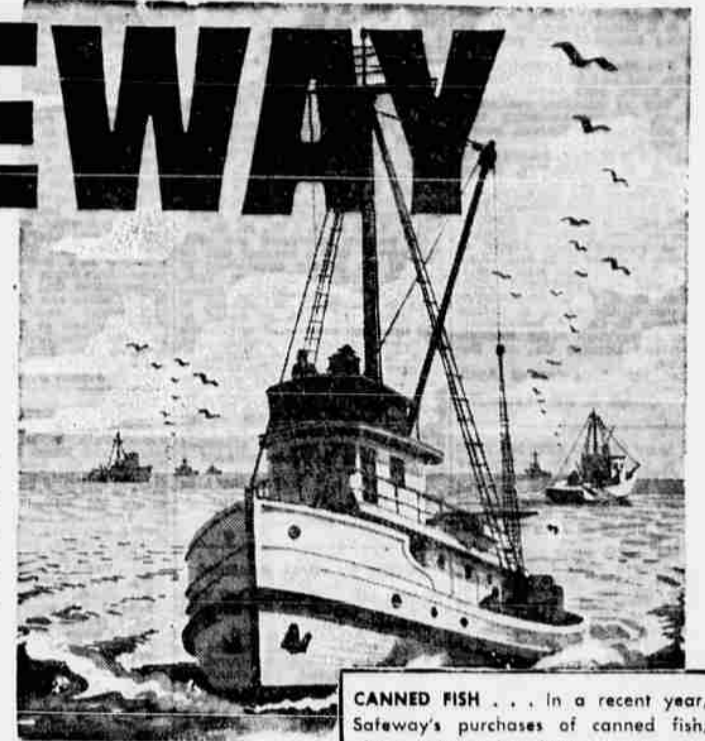
Highly colored, flavorful wine variety. Perfect for tart, zesty sauce or delicious pies.

Asparagus Local all-green 30-lb. box \$5.69 lb. 19c
Green Onions or Radishes. Mild flavor. bunch 5c
Leaf Lettuce or Salad Bowl Lettuce 2 heads 29c
Yellow Onions Medium size; mild, flavorful lb. 5c
New Potatoes U.S. No. 1 Calif. White Shufflers 10 lbs. 59c

OREGON Products Week at SAFEWAY



DAIRY PRODUCTS . . . In a recent year, Safeway's purchases of local dairy products (including eggs) amounted to \$5,000,000.



CANNED FISH . . . In a recent year, Safeway's purchases of canned fish, alone, amounted to \$102,497.00.

Oregon Products Cross the Nation with Safeway . . . from Alaska to New York!

As Oregon Agriculture's largest single customer, Safeway is proud of its role as a creator of new markets for Oregon products. From Anchorage, Alaska, to New York City; from Winnipeg, Canada to Austin, Texas, Oregon products are enjoyed at the family dinner table . . . thanks to Safeway. And Oregon's product dollars stay here, at home, to build a stronger economy.

- Applesauce** HOOD RIVER - Made from finest tree-ripened fruit. 7 303 cans \$1.00
- Blue Bell** POTATO CHIPS - Reg. 69c. Crisp and fresh. Big "Triple Pack" 11 1/4-oz. pkg. 59c
- Dog Food** POOCH - Regular or liver flavor . . . a great buy . . . Regular 3 for 25c 6 reg. cans 39c

NBC CRACKERS

Mix 'em or match 'em! Chippers, Salt Tongs; all "thin" varieties . . . Rye, Triangle, Vegetable, Wheat, and Bacon.

3 pkgs. \$1

CHUNK TUNA

Bumble Bee Finest quality all light meat. Limit 4 cans.
Sea Trader All light meat. Why pay more?

4 No. 1/2 cans 89c
 4 No. 1/2 cans 85c

- Apple Juice** Hood River Great "pick-up" 24 oz. btl. 29c
- Cherries** Empress. Red Maraschino type 8 oz. jar 39c
- Pie Cherries** Town House Tart Filled 4 303 cans \$1
- Corn** Town House fancy whole kernel or cream style 6 303 cans \$1
- Green Beans** Santiam cut or sliced 5 303 cans \$1
- Peas** Gardenside. Tender, all-greens. A thrifty buy! 7 303 cans \$1
- Mushrooms** Shady Oak pieces and stems 4 4 oz. cans \$1
- Lucerne Butter** Grade "AA" sweet cream 1-lb. print 72c
- Lucerne 3.8 Milk** "Bonus Quality" 4 1/2 gal. ctns. \$1.84
- Dill Pickles** Zippy. Whole reg. or Kosher styles 56-oz. jar 59c
- Dried Prunes** Large size; cello pack 2-lb. pkg. 69c
- Baby Walnuts** Tigard brand; full meat 14-oz. pkg. 45c
- Corn Bread** Skylark feature. Reg. 29c. Save 2c 1-lb. loaf 27c

Highway Prepared Beans Choice of: Pork and Beans, or dark red Kidney Beans, Pinto, or Mexican style 8 300 cans \$1

Grandma's Cookies Kathy Krems, Date filled, and Oatmeal-Date. Perfect for lunch boxes! 39c

C-20 Detergent A great low sudsing detergent. Made especially for automatic washers 4-lb. pkg. 95c

- Fril-lets** PORTER'S Wide style egg noodles. 7 oz. pkg. 19c
- Macaroni** SUNRISE Elbow style 1-lb. pkg. 39c
- Spaghetti** SUNRISE Elbow style 2-lb. pkg. 39c

Enjoy these finest Oregon grown or produced products!



FRESH FRUITS AND VEGETABLES . . . In a recent year, Safeway's purchases of fresh fruits and vegetables amounted to \$3,914,062.

Safeway meats are GUARANTEED to please!

Fresh Pork Roast

You're sure to enjoy these grand roasts . . . 5 to 8 lbs. . . cut from tender, grain-fed porkers.

Picnic style pork shoulder roasts . . . carefully trimmed. Eating satisfaction guaranteed. lb. 29c



- Pork Steaks** Fresh, blade cuts lb. 49c
- Pork Cutlets** Boneless, no waste lb. 59c
- Pork Shoulder Roasts** Blade cuts lb. 49c
- More outstanding meat values!
- Beef Spencer Steaks** "USDA CHOICE" Boneless lb. \$1.39
- Beef Round Steaks** and Swiss steak. "US CHOICE" lb. 98c
- Beef Rib Steaks** "USDA CHOICE" carefully trimmed. lb. 98c
- Ground Beef** It doesn't cook away in the pan. lb. 49c
- Ground Round** Extra lean; freshly ground, flavorful. lb. 79c
- Beef Short Ribs** "USDA CHOICE" aged generous with meat. lb. 39c
- Bolling Beef** "USDA CHOICE" aged beef; plate cuts. lb. 29c
- Beef Sausage** Delicately seasoned pure beef 1-lb. rolls \$1.00
- Breaded Shrimp** Trophy. Cleaned, frozen, ready to cook. 24-oz. pkg. \$1.10

"USDA CHOICE" FREEZER BEEF

Forequarters lb. 45c Hindquarters lb. 63c Full Sides lb. 53c

Cut and wrapped FREE of charge!

Prices in this advertisement are effective at Safeway in Medford through Wednesday, May 18. We reserve the right to limit.

WE GIVE GOLD BOND STAMPS for extra savings.

Cragmont SODA POP

12 Delicious Flavors

Here's a real Value of Quality Beverages

6 Full Quarts \$1.00

Plus Bottle Deposit



MEATS . . . In a recent year, Safeway's local purchases of fresh and frozen poultry and fresh meats totalled \$21,176,247.



SAFEWAY