

Nation's First 'Basket Case' Now Successful

Mt. Pinson, Ala. — UPI — World War II robbed Fred Hensel of his arms and his legs, but not his courage.

For it was his courage that has made a prosperous, active man out of the nation's first "basket case."

At the age of 42, Hensel is the father of four children. He owns a fleet of five tractor-trailer trucks that haul all over the United States. He also owns a service station and land that he rents out.

It was 15 years ago on Okinawa that Hensel, a native of Corbin, Ky., who had enlisted in the Army in 1937, met with what he refers to as his "accident."

"I was a maintenance sergeant in the 76 tank battalion of the 77th infantry division on Okinawa," Hensel recalls. "We had 21 tanks knocked out on this plateau out there. That's a pretty big loss out of about 60 tanks. I was out there to try and get them back in when something just happened."

It is assumed that Hensel stepped on an enemy land mine. The explosion tore off his legs and one arm and mangled the other so badly it had to be amputated.

After eleven heart-breaking months of hospitalization, Hensel was equipped with artificial limbs and steel hooks for hands. He started out with his devoted wife to do but one thing: "I wanted to be successful."

At first, his doctors did not want him to leave the hospital. They said he was not strong enough. He disagreed and finally persuaded them to let him go.

Perhaps to prove he was strong enough, Hensel turned to farming near this small north Alabama town only a few miles from Birmingham. He did all the work himself, plowing, planting, milking.

He tried raising chickens for a while, then turned to dairy farming. Hensel says he was lucky with the cows. He sold them just before the bottom dropped out of the market one year, making a nice profit.

Hensel had 143 fertile acres bought with government assistance. He was mighty proud of his farm, but then the state government built a highway through it.

"That highway took 10 acres, right through the middle," Hensel said. "It took out the heart of my farm. I quit farming."

But the highway also brought in enough money for Hensel to purchase his first truck and hire someone to drive it. Today, he has \$35,000 worth of trucks alone.

How does Hensel explain his success?

"Just because a man has his arms and legs cut off, it doesn't mean he can't be successful. He should be successful anyway. He wouldn't have to be too terribly successful to feel a little successful."

Local Woman Seeks \$27,353 in Suit

Verda Turner Thumler, Medford, is seeking \$27,353 from the Southern Pacific Railroad, and Delbert Hebert, SP engineer, as a result of an accident May 4, 1959, at the Fourth st. railroad crossing in Medford.

According to the complaint, Mrs. Thumler was a passenger in a car driven by Angel Ingle when the accident in which she was injured occurred.

In her complaint, she alleges the engineer and railroad were negligent in allowing the locomotive to travel at a greater speed than was reasonable and prudent, failed to keep a proper lookout, failed to provide a signalman or guard at the street crossing, did not sound a whistle or bell, failed to keep proper control of the train, failed to reduce speed or stop the engine, no signals were provided by mechanical devices, no automatic gates were at the crossing and the engine did not have proper electric lights.

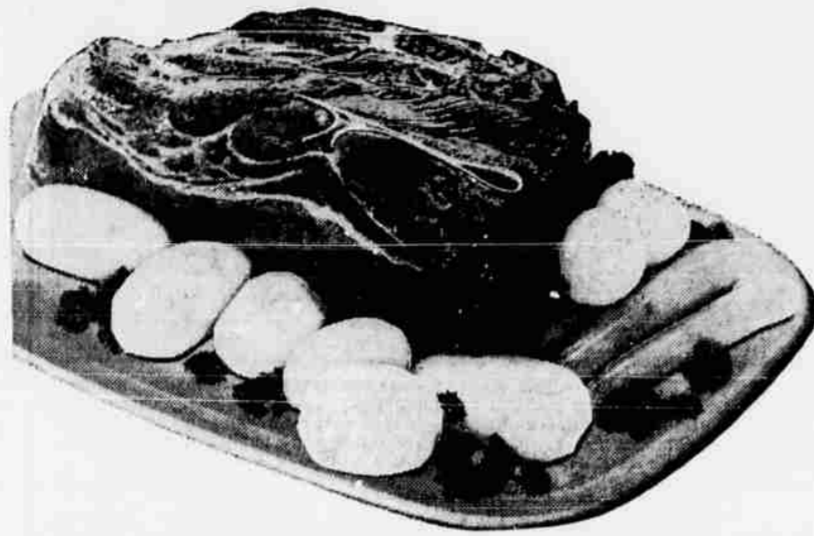
Mrs. Thumler is seeking \$27,000 in general damages, \$241 for medical expenses, and \$112 for loss of wages.

Medford Youth Named To College Group

Corvallis — Vernon L. Gleason of Medford has been selected to be a member of the national accounting honorary, Beta Alpha Psi, at Oregon State college. He is a senior this year in the school of business and technology.

Selection of members is based on high scholarship and promise of future achievements.

ONLY "USDA CHOICE"



MORE PROOF IT PAYS TO SHOP SAFEWAY

- Safeway Instant** New larger size. Why pay more? 10-oz. jar **\$1.49**
- Folger's Instant** A rich blend of fine coffees—25c off Deal 10-oz. jar **\$1.64**
- Grapefruit** Highway Brand—Broken Segments 5 303 cans **\$1**
- Pineapple** HIGHWAY BRAND—1/2 Slices 5 1 1/4 flats **\$1**
- Ice Cream** Richer, Tastier Party Pride—Regular 89c 1/2 Gal. Today 1/2 gal. **79c**
Vanilla, peppermint, neopolitan, chocolate, marshmallow, cherry-vanilla, choc. chip, almond.
- Peaches** Sundown Brand—Freestone 4 2 1/2 cans **\$1**
- Fruit Cocktail** Town House 4 FOR **\$1**

CANNED MILK

- CHERUB** Limit 6
Finest evaporated . . . for cooking, table, and baby's diets. Why pay more? Reg. 3 for 45c special.
- CARNATION** Limit 6
A double-rich milk that actually whips. Reg. 3 for 47c. Specially priced this weekend.

6 tall tins **59c** **6** tins tall **69c**

- Mixed Cookies** Busy Baker Big Family Assortment 1 1/2-lb. bag **49c**
- Laundry Soap** White Magic combines detergent action with soap mildness 40-oz. pkg. **69c**
- Bath Tissue** Chiffon, white, pink, yellow and aqua. 2 rolls for **29c**

FREE 8-oz. tin of TOWN HOUSE TOMATO SAUCE. Reg. 9c value

When You Buy a 1 1/2-oz. Pkg. of Schilling's SPAGHETTI SAUCE MIX

Reg. 25c Schilling's, in the easy-to-open, foil package, and Town House tomato sauce are a great combination for a mighty delicious spaghetti dinner. Special offer. Both for **Only 25c**

At Safeway, all beef is "USDA CHOICE" grade, the quality that gives you perfect tenderness and flavor. Since we offer only this top "CHOICE" grade, you can be sure of finer, more delicious beef every time!

POT ROAST

Blade Cut

Your whole family will really go for this wonderful "USDA CHOICE" beef pot roast . . . so tender and juicy! It's fine quality and superb flavor make it ideal for a wide variety of taste tempting meals. Serve delicious beef pot roast tonight. Put one in your freezer, too.

45c
lb.

- Ground Beef** Made fresh each day lb. **49c**
- Lunch Meat** Salami, Veal, Olive Pickle-pimiento loaf lb. **59c**
- Smoked Picnics** Short Shank 6 to 8 lbs. lb. **39c**
- Boneless Roast** Cross Rib lb. **75c**
- Boneless Beef Stew** lb. **75c**
- Link Sausage** Safeway seasoned lb. **59c**
- Sirloin Tips** BONELESS "US CHOICE" Beef lb. **98c**

- Del Monte Wieners** or Safeway, skinless. 1-lb. **49c**
- Sliced Bacon** Del Monte "Sweetheart" Smoked—Lean and Tender lb. **55c**
- Slab Bacon** Fully smoked. Center Cut Slabs 49c Whole or Half lb. **45c**
- Meat Pies** Delicious Manor House—Tuna, Chicken, Turkey or Beef 5 8-oz. pies **\$1**



Freezer Beef Sale

Tender "USDA CHOICE" scientifically aged beef. Safeway cuts and wraps the beef to your specifications . . . absolutely FREE.

- Forequarters** lb. **45c**
- Hindquarters** lb. **63c**
- Full Sides** lb. **53c**

LUCERNE COTTAGE CHEESE

Snowy-white curds with fresh-from-the-dairy flavor. Your choice of 5 delicious varieties: Farmer-style small curd, creamy large curd, chived, Lo-Cal, and Fruit Salad.



- Full pint** **25c**
- Full quart** **49c**
- Half gal.** **98c**

