

SPORTS

10 Better ND Marks In Track

University of Oregon, Eugene — Hurdler Dave Edstrom of Oregon and Darrell Horn of Oregon State, along with sprinters Amos Marsh of the Beavers and Dayton Kolstad and Bob Saunders of Washington, led a list of 10 improved marks in the top Northern Division track and field marks last weekend.

Edstrom, already the third ranked decathlon man in world history flew over the high hurdles against Washington State in 13.8 to move into second in the national 1968 rankings and stamp himself as one of the top 20 hurdlers in the history of track and field.

Horn captured the low hurdles against California in 23.7 to grab the lead there in addition to his top spot in the broad jump while Saunders and Marsh were clocked in 9.5 as they lost 100-yard races. In the 220 Saunders and Kolstad ran two-three in 20.9 and 21.0 as UCLA's Bob Knott won in 20.8, one of the nation's top efforts.

Oregon's Jim Puckett and WSU's Perry Harper ran the 100 in 9.6 to move into a tie for second, Washington's Tony Angell moved into first place in the shot with an effort of 52-9/16 and Don Fallis of the Huskies took over undisputed third place in the pole vault with a leap of 14.4.

The Ducks still lead in top performances with seven, including a double in the 880 and mile by Dyrrol Burleson. Oregon State has four top marks and both Washington and Washington State now have three each.

Next Saturday Oregon is home again against Oregon State and will be after its 29th straight North Division win while Washington travels to Pullman for the annual meeting with the Cougars and Idaho sends its varsity to the Vancouver relays in British Columbia.

The performances of the division leaders rank very favorably in the national standings. Burleson's 3:58.6 mile is tops and his 1:50 in the 880 ranks third. The 9.5 marks of Marsh and Saunders in the 100 are the second best listed collegiately among those not aided by wind, along with several others, Edstrom's high hurdle time is second, Hank Wyborne's 6-11 high jump is third, and Dick Miller of Oregon's 9:09.3 two mile is fifth among the collegiate runners.

Top marks are:
100—Amos Marsh, OSC, and Bob Saunders, W, 9.5; Jim Puckett, O, and Perry Harper, WSU, 9.6.
220—Saunders, W, 20.9; Dayton Kolstad, W, 21.0; Marsh, 21.3.
440—Sig Ohlemann, O, and Rick Harder, W, 48.4; Ron Bach, OSC, 48.8.
880—Dyrrol Burleson, O, 1:50; Norm Hoffman, OSC, 1:52.5; Don Bertola, WSU, 1:53.
1 Mile—Burleson, O, 3:58.6; Hoffman, OSC, 4:11.2; Jack Larson, W, 4:11.5.
Two mile—Dick Miller, O, 9:09.3; Ray Hatton, I, 9:13.1; George Larson, O, 9:21.
High hurdles—Dave Edstrom, 13.8; Spike Arlt, WSU, 14.3; Barney Olberg, W, 14.6.
Low hurdles—Darrell Horn, OSC, 22.7; Edstrom, O, 23.8; Arlt, WSU, 24.
Pole vault—Phil Paquin, O, and Wayne Wilson, WSU, 14-6; Don Fallis, W, 14-4.
Javelin—Gary Stenlund, OSC, 236-8/16; D. C. Mills, 223-6; John Douglas, W, 221-0.
Broad jump—Horn, OSC, 24-5/16; Jerry Close, O, 23-11/16; Edstrom, O, 23-6/16.
High jump—Hank Wyborne, WSU, 6-11; John Hunter, OSC, 6-5; Murray Newton, O, 6-3.
Shot put—Tony Angell, W, 52-9/16; Neil Plumley, OSC, 52-6/16; Jack Slocombe, O, 52-3/16.
Discus—Jerry Stuhlfeld, O, 167-4; Doug Martin, OSC, 167-1/16; Joe Davis, I, 157-10.
Mile relay—Washington State, 3:16.0; Oregon, 3:17.2; Washington, 3:19.2.

PCL Restores 21-Man Limit

Seattle — Pacific Coast league baseball directors have voted to restore the 21-man player limit for the 1968 season, league president Dewey Soriano announced.

The baseball leaders had trimmed it to 20 players per team for the season.

Soriano said the inclement weather throughout the league during the first two weeks of play influenced the decision.

The limit goes into effect at midnight May 18.

BRILL METAL WORKS

Commercial — Industrial
Residential Home Metal Work
Signs, Galvanized
and Copper Fabrication
2787 West Main
PHONE SP 2-6440



REPEAT OF A SELLOUT!

8.95 NYLON TIRE OFFER!



Free Wheel Balance Labor Pay Only for Weights Used

ALLSTATE TRIPLE GUARANTEE
1. Lifetime Guarantee against all defects in material and workmanship prorated on tread wear.
2. Time Service Guarantee against all types of road hazards prorated on months used.
3. Satisfaction Guaranteed or your money back. All adjustments are based on the current price without trade-in at time of return.

NO MONEY DOWN

when you trade-in the old tires off your car.

Fast, Free Tire Mounting

Buy the First Tire at the No Trade-In Price, Get the 2nd Tire, The ALL-STATE Safety Highway for Only ...

8.95
6.70 x 15 Tube-Type Blackwall Each plus tax

NO TRADE IN REQUIRED THIS SALE ONLY

Tube-Type Blackwall	Buy 1st tire at no trade-in price plus tax	Get 2nd tire at this low price plus tax
6.70 x 15	22.45	8.95
7.10 x 15	24.95	11.45
7.60 x 15	26.45	12.95
Tube-Type Whitewall		
6.70 x 15	26.45	12.95
7.10 x 15	28.95	15.45
7.60 x 15	30.45	16.95

Tubeless Blackwall	Buy 1st tire at no trade-in price plus tax	Get 2nd tire at this low price plus tax
6.70 x 15	24.95	11.45
7.50 x 14	27.45	13.95
8.00 x 14	28.95	15.45
Tubeless Whitewall		
6.70 x 15	28.95	15.45
7.50 x 14	31.45	17.95
8.00 x 14	32.95	19.45

- Hundreds of extra traction edges in the tire tread help prevent skids in all directions
- 20-month nationwide road hazard guarantee
- Made with super strong nylon cord construction
- High mileage "emulsamix" precision blended rubber

Full Retread TIRE



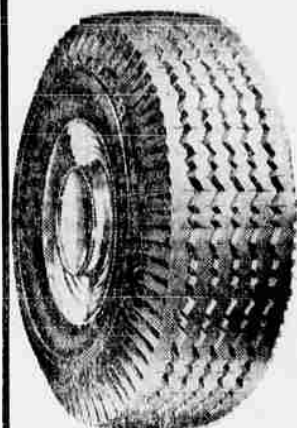
12 Mo. Guar.

9.88

6.70-15 Tube Type Blackwall Plus Tax

- * 7.10x15 10.88
- * 7.60x15 12.88
- * 7.50x14 10.88
- * and old tire

NOT A SECOND OR A RECAP BUT A NEW NYLON TIRE



The Allstate

11.88

6.70-15 Tube Type Plus Tax ex.

7.50x14 13.88*

- 12 mo. R.H. guarantee
- Super strong nylon cord

ATTENTION TRUCKERS RAYON EXPRESS LIGHT DELIVERY



NO TRADE IN REQUIRED

14.88

6.00-16 plus tax

* 6.50x16 19.88

* 7.00x15 24.88

Wheel Align. . . 6.95
Wheel Balance 1.40

ea. wheel

Expert Installation While You Shop

Choose from our complete line of seat covers. Our trained service men will fit them to your car in no time at all.

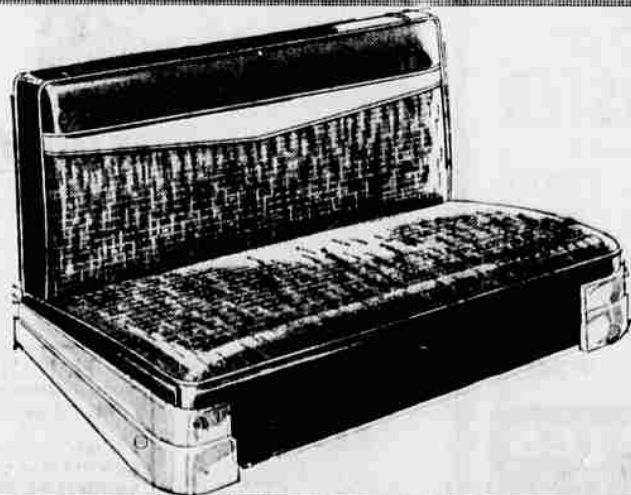


Plastic & Vinyl Smart Styled Seat Covers at a Low Price

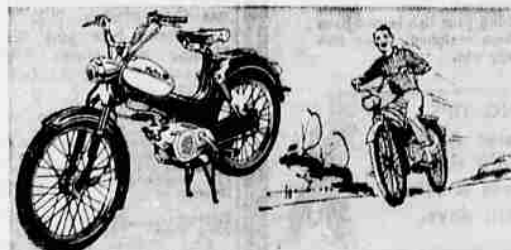
2 DAYS ONLY—SAVE 3.51

19.44 installed

Good looking and built to take hard punishment. Choice of three colors — an outstanding value at this price!



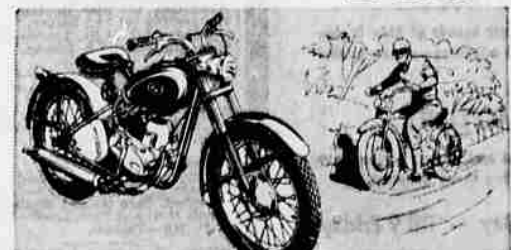
ALLSTATE, YOUR MEDFORD WHEEL GOODS CENTER



THE ALLSTATE 2-HP MOPED Reg. 199.95 **188.88**



Smooth Riding 5-HP Cruisair Reg. 359.95 **348.88**



Low Cost 4.95 HP ALLSTATE Cycle Reg. 339.95 **328.88**



SPECIAL 1 Only—Slightly Used 488.88 ALLSTATE "250" Road Machine Reg. 549.99 **548.88**

"Satisfaction guaranteed or your money back" **SEARS**

501 East Jackson — SP 3-4461
MEDFORD SHOPPING CENTER
Open Monday and Friday 'Til 9 p.m.

FREE PARKING
OPEN TONIGHT 'TIL 9