



Trees . . .

By JOHN CRIBBLE
(Editor's note: The following comments on trees, particularly those adaptable to street use in Medford, have been prepared by John Cribble, well known reforester, and will be run in a series during the "tree planting season" here, now under way.)

MAPLES
Maples (Acer) are wonderful trees. At least 70 different kinds of maples are known, widely distributed over the temperate regions of the world, some to the equator. Thirteen species of maples are native to the United States, among which are some of the most desirable shade trees. They vary greatly in shape, size, foliage, growth and soil requirements. Maples are readily recognized by their fruit, which is a double samara. Most grow well in the Pacific Northwest.

The Oregon broadleaf maple (Acer macrophyllum) a native of the Pacific coast from Alaska into California, reaches a height of 90 feet, 3 to 4 and five feet diameter with leaves usually 8 to 12 inches in diameter. Once I found some 18 and 19 1/2 inches broad. One 19 13/16 inches broad went to the Washington office of the U.S. forest service, where, I understand, it is framed and on the office wall. Later I took some pictures of one leaf in Eugene 20 inches broad and 27 inches to end of stem. That one year several trees had enormous leaves. They looked like newspapers folding and unfolding as they creased and fluttered to earth in the autumn breeze.

The Norway maple (Acer platanoides) is a native of Europe, but grows well in the northeast U. S., the Great Lake states and the Pacific Northwest. It is a round-topped tree with wide spreading branches. It is inclined to have low head unless pruned high headed at start. Generally the foliage remains green later in fall than the native maples.

The leaves resemble the sugar maple, but darker and a little larger. In autumn the leaves turn yellow before dropping. The petioles of the leaves contain a milky juice by which the tree is easily distinguished from the Sugar maple. The flowers come in April and May, before the leaves appear and are arranged in compact clusters of greenish-yellow color. The fruit, a samara, does not ripen until fall, though it is fully grown in late spring. The large horizontal spreading wings help to distinguish this tree from the native maples. The terminal winter buds are fat, and usually dark red color, sometimes yellowish-green.

The Norway maple grows well even in poor soil; it suffers little setback from replanting. But it will not thrive in wet ground. It is very tolerant of city conditions, also along the seacoast.

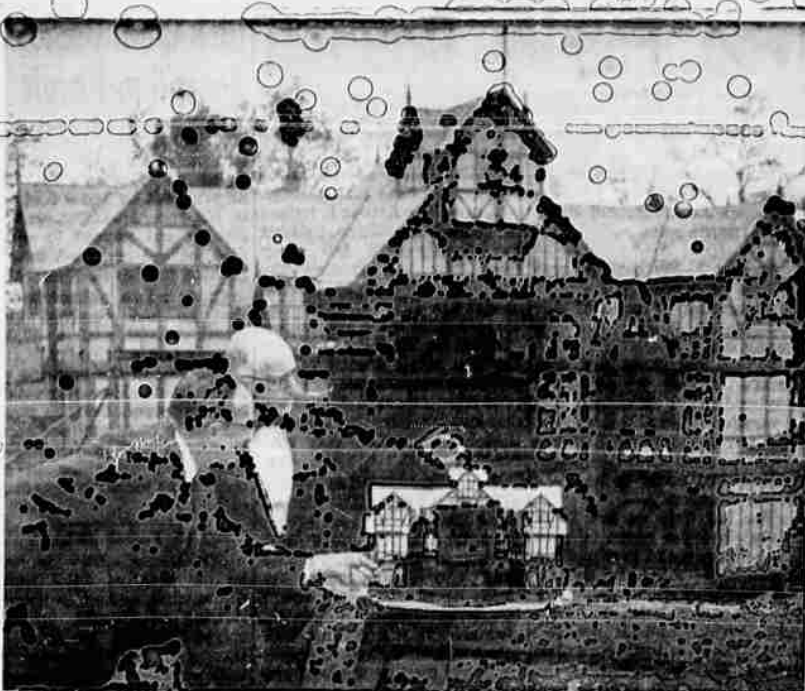
Norway maple is the tree for Ardmore, Cirritos, Lynwood, Sandy Terrace, Vancouver, 50 to 60 feet apart, and on Oregon st. on property, 50 to 60 feet apart.

Thieves Pick Good Targets, Get Nothing

Tucson, Ariz. - Thieves picked what looked like three juicy targets in a Tucson shopping center. They broke into a Bank of Douglas branch, the Tucson Realty and Trust Co. and the Tucson Savings and Loan Co. They ripped off a door at one place, pruned away the plate surrounding a vault knob at another, forced open several desks and smashed a couple of padlocks. Total loot - nothing.

Sherman Oaks, Calif. - Actor Keefe Brasselle's daughter has been reported missing after she apparently ran away from home because she could not have her own car.

GANG LOGS WANTED!
DOUGLAS FIR
Prompt Pay
W. H. Daugherty Company
WHOLE CITY
Phone 2-2711



ON THE ROAD—The model of the Oregon Shakespearean Festival stage (above), in front of the actual stage at Ashland, is destined to travel to many parts of the country. Allan Harris (right) created the exactly scaled replica, taking 280 hours to complete.

STAR GAZER
By CLAY R. POLLAN
Your Daily Activity Guide According to the Stars
To develop message for Sunday, read words corresponding to numbers of your Zodiac birth sign.

ARIES MAR 21-20	Taurus APR 21-20	Scorpio OCT 23-21	Libra SEP 23-21
10-12-15-35 5-7-20-25 28-41-45	1-11-13-31 2-12-14-15 16-30-34-50 34-78-80-90	1-11-13-31 2-12-14-15 16-30-34-50 34-78-80-90	1-11-13-31 2-12-14-15 16-30-34-50 34-78-80-90
1-11-13-31 2-12-14-15 16-30-34-50 34-78-80-90	1-11-13-31 2-12-14-15 16-30-34-50 34-78-80-90	1-11-13-31 2-12-14-15 16-30-34-50 34-78-80-90	1-11-13-31 2-12-14-15 16-30-34-50 34-78-80-90

Swampscott, Mass.—UPB—Selectman Donald E. Costin opposed the idea of a pay raise for the selectmen. But taxpayers voted them raises of \$150 a year each, anyhow. Costin announced his \$150 would be spent to buy three new swivel chairs for the three selectmen.

By 1975, total population of the U.S. will be an estimated 235 million. The labor force will total 94 million, according to economists. More than 75,000,000 Americans have received at least some Salk polio vaccine, according to the Book of Knowledge Annual.

'Hattier Hat' Shows Stress on Bulky Look, But Not Heavy

The spring season calls for a "hattier hat" with a stress on the bulky look—not heavy—but light.
One of the important silhouettes for spring 1950 is the Breton; the innovation: the up-swept front. The newest version is banded about the crown with an upturning brim.
There is a definite trend toward large full-blown Berets worn to the back of the head or on profile. These are right for many of the suits and ready-to-wear with short, young jackets and skirts lightly gathered or rounded at the sides or for the Chanel-inspired ensembles.
Height is featured in tall pillboxes, turbans and toques which often telescope, and fezzes that keep to the back of the head are shown in many collections.
Ready-to-wear seems to demand this "high hat" silhouette because of the short bell sleeves cut just above the elbow featured in coats, suits and dresses. It gives perfect balance to the total look.

Court Records
DISTRICT COURT
John B. Childers, failure to stop \$10.
George Edward Lees, failure to stop \$10.
Sidney P. Howell, no operator's license, \$10.
Gerald Blunt, failure to stop, \$10.
Richard L. Graham, no muffler, \$15.
Otto E. Skogelberg, passing with insufficient clearance, \$15.
Richard H. Southard, overload, \$25.
William R. Gard, no muffler, \$15.
CIRCUIT COURT
Verneva E. Eatherton vs. Jay Eatherton, divorce decree.
Thelma L. Sutherland vs. Kenneth C. Sutherland, divorce decree.
Raymond Edward Gould vs. Virginia Dianne Gould, divorce decree.
Vivian M. Wolf vs. Kenneth P. Wolf, divorce decree.
Barbara J. Gardner vs. Maynard I. Gardner, divorce decree.
Evangeline G. Bran vs. Charles E. Bran, divorce decree.
Patricia Ann Hall vs. Thomas Gordon Hall, divorce decree.
Joy Bigham vs. Leslie L. Bigham, divorce complaint.
James M. Whitaker vs. Almyr Ellen Whitaker, annulment decree.
Pete DeWeerd vs. Mary Frances DeWeerd, divorce complaint.

There's a great use of hand-woven braids which are lustrous and opale scent. This medium seems to be the perfect accompaniment for the white tones (banana, cream, ivory, etc.) endorsed by fashion-conscious women.
Novelty straw bandings are featured either sewn together, or for an airy effect, stitched on net, which gives a soft, light look to many of the fuller silhouettes.
Panama, ball-buri and strawcloth are found in every line. There is an emphasis on texture both in hat bodies and novelty braids. For contrast there are the fine braids—awn milan for example, and novelty lacy and light braids.
Fabrics emphasize geometric patterns with muted tones and flower prints. There are chiffons, stitched fabrics, crepes and silk jerseys.
Color
Colors are gold shades, ranging from chamois to bright butts and pastels, blues, from ice to riveria to sapphire; reds, carnation pink to ruby; and whites and neutrals.
The very bright clear colors take the lead in the fashion picture since the subdued permits and whites seen in coats, suits and dresses, need a color accent.

Items for Babies
Keep Planes Trim
Farmingdale, N.Y. - Baby-care items are used to keep Republic Aviation corporation's F-105 Thunderchief in flying trim.
Diapers are used to wipe down canopies and instrument panels; talcum powder is used to ease friction when tight fitting fuel cells are installed and castile soap is used for pressure testing hoses and connections.
BETTER GET HORSES
Washington—UPB—Supplies of domestic horse meat, used mostly by dog food manufacturers, is growing scarcer as the number of horses in this country declines. Last year slaughter-houses processed 73,232 head, down from 107,406 in 1958.

Brave Saleslady
(Frightens Bandit)
Arlington, Va. - A woman entered a sporting goods store and told Mrs. Mounsey that she wanted to see a 24 caliber pistol and shells. He picked up the gun, inserted a cartridge and pointed it at Mrs. Mounsey's head. Instead of handing over money, as the man demanded, Mrs. Mounsey walked toward him and he quaked and ran, taking only the gun.
MILK-85c Gal.
Delivered to Medford Ariz. Call 818-8-2719 for 1950 brand MY KIDWAY BABY

VALLEY PLUMBING
Service - Integrity
2101 West Main Phone SP 3-3102

STAGECOACH ORCHARD APPLES
At Greatly Reduced Prices
Delicious\$1.00 per lug
Spitz\$2.00 per lug
Weekdays 8 to 5 Sundays Noon to 5

New York—UPB—Private industry payments for pension, welfare and unemployment benefits increased by \$1.6 billion from 1958 to 1959, to a total of \$15.4 billion, according to the National Industrial Conference Board. Payments have tripled in the last decade.

SACRIFICE!
Pear Orchard
—20, 40 or 60 ACRES—
IT IS THE BEST BUY IN THIS VALLEY!
Will Sell on Terms to Reliable Party
NORMA BEAVER
1313 Redwood Avenue - Grants Pass, Oregon
GREENWOOD 9-1449

OPEN HOUSES
11:00 TILL DUSK
1771 EASY STREET Brookhurst Subdivision
Out Crater Lake Avenue to Roberts Road, watch our signs. Beautifully finished New 3-Bedroom Home with trees in a suburban location with all city conveniences; including paving, water and sewer. Large double garage, electric heat, built-in range and oven, fireplace. Excellent financing \$15,300 available. PRICE

EARHART PARK
Corner of Siskiyou & Eastwood
An excellent new 3-Bedroom home sensibly priced. 1 1/2 baths, built-ins including dishwasher. Lots of tile, nice large bedrooms and closets. Truly a home of distinction.

MURPHY ROAD
South of New Hospital
A New Deluxe 3-Bedroom Home with all the extras that can be added to a home. See this one today and compare it value for value. On a large corner lot. FULL PRICE \$19,000.

AMERICAN Home & Land Co.
MEDFORD HOTEL LOBBY
SP 3-7543

Midge Conrad SP 3-1623
Ann Mitchell SP 2-2910
Dell Eubanks SP 3-1416
Herb Lee SP 3-4602
Jim Nistler SP 3-7543
J. E. Harper SP 3-4032

TODAY! 12 NOON TILL DUSK
In the Beautiful New Blossom Hill Terrace
Just Drive Out Crater Lake Avenue To East McAndrews Road

OPEN
1725 Camellia
Has 2 large bedrooms with spacious closets, trellised double carport and storage, all hardwood floors, thermostatic controlled gas heat, fireplace, knotty pine kitchen with hood, formica drain and maple cutting block, mahogany paneling in large living room and doors, hall with linen storage, tile bath with 5 ft. plate glass mirror on tile vanity, dining area with sliding glass doors leading to concrete patio, utility room, built-in planters and concrete front porch the length of house. Concrete driveway, curbs, gutters and sidewalks all on a spacious lot with shrubs, lawn, city water and sewer in.

FHA
and other terms Available

HOUSE
1540 Oleander
Attractive colonial style home with 3 large bedrooms with roomy closets, maple floors, big dining room and colonial fireplace, maple kitchen with formica top drain hood, cutting block and breakfast bar, dining area with sliding glass doors leading to concrete patio, thermostatic gas heat, china closet with sliding glass doors, linen closets in hall, tile bath, colonial style front porch with concrete floor, curbs, gutters, driveway, sidewalk, lawn landscaped with shrubs, 2-car garage with finished interior. On a lovely lot with city water, sewer and electricity.

WE BUILD FROM YOUR PLANS OR OURS

W. BENTON SMITH
BUILDER • Licensed • Bonded • Insured • SP 2-4000