

Neighbors Announce Convention



Mrs. Virginia Duvall, Vancouver, Wash., supervisor for the Royal Neighbors of America in Oregon, will attend a district convention of the order to be held in Ashland April 29.

The 28th district convention of the Royal Neighbors of America will convene in Ashland Friday, April 29, at the Odd Fellow hall on the Plaza. Official visitors will be Mrs. Virginia Duvall, Vancouver, Wash., state supervisor; Mrs. Nora E. Danford, Yakima, Wash., supreme auditor; Mrs. Frank Steele, Klamath Falls, and Mrs. Elsa O. Walker, district deputies.

Presiding at the convention will be Mrs. Carl Dalenborg, Ashland, district orator.

Registration will begin at 9:30 a.m. with the first session at 10 a.m.

Luncheon will be served at noon by the Past Oracle club of Ashland at the hall. The banquet at 6 p.m. will be served by the Bellview Grange at the Grange hall.

Camp session will start at 8 p.m. with class adoption by Klamath Falls camp. Installation of district officers for 1961 will be held and a memorial service presented by the Jacksonville camp. Various camps will present the remainder of the evening's program, it was announced.

League to Give Scholarship

Cave Junction - A scholarship will be given a student at Illinois Valley High school by the Civic Women's League, it was decided at a recent meeting.

The group plans to contact Wesley Peters, high school principal. They decide to have senior students interested in applying for the scholarship to write essays which will be judged by the League. It was explained that the essays will not contain the name of the writer.

Also discussed at the meeting were money making projects and the election of officers. Eleven members attended the meeting at the home of Mrs. James Hansen.

Ceremony To Honor Long-Time Members Of Reames Chapter

Charter and fifty-year members will be honored at a stated meeting of Reames chapter of the Order of the Eastern Star on Thursday, April 28 at 8 p.m. in the Medford Masonic temple.

Mrs. Audrey Roberts, worthy matron, and Carl Oestreich, worthy patron, will preside.

Following the meeting refreshments will be served in the dining room. All Eastern Star members are invited to attend.

Open House Set On Anniversary

An open house Saturday, April 30, will observe the golden wedding anniversary of Mr. and Mrs. Leo A. Young, 1557 Stewart avenue. The event will be from 1 until 5 o'clock Saturday afternoon at the Young home. Friends and relatives are invited to call.

Mr. and Mrs. Young are long-time residents, having lived in the Orchard Home district since 1928.

Eastern Bazaar Atmosphere To Be Arranged For Event

The second floor of Hillcrest hotel will resemble a flower shop, but the ground floor will have the aura of an Eastern bazaar next Thursday, April 28, when the Medford committee of the American Cancer society will present its annual silver tea at Hillcrest orchards.

Many local clubs and organizations are submitting flower arrangements for the contest again this year, and these will be placed in upstairs rooms for leisurely viewing and voting. Names of organizations will be eliminated from the displays; guests will vote by number, to assure impartiality.

The international theme of the 1960 tea will dominate the first floor exhibits, but many of the items displayed will be from countries of the Near East or the Far East.

Mrs. G. R. Owens is exhibiting her collection of Japanese scrolls, a bronze bowl, and a mandarin robe.

Mrs. Fred Shere will display a Chinese table and a satsuma vase, and Mrs. Donald Whalin will loan a Persian rug for the occasion.

Mrs. Henry Miller can claim originality in her items from Turkey and Greece, for among them will be a camel saddle. Mrs. Gordon Warner will also exhibit the unusual when she displays her drums from Dutch Guinea and Fiji.

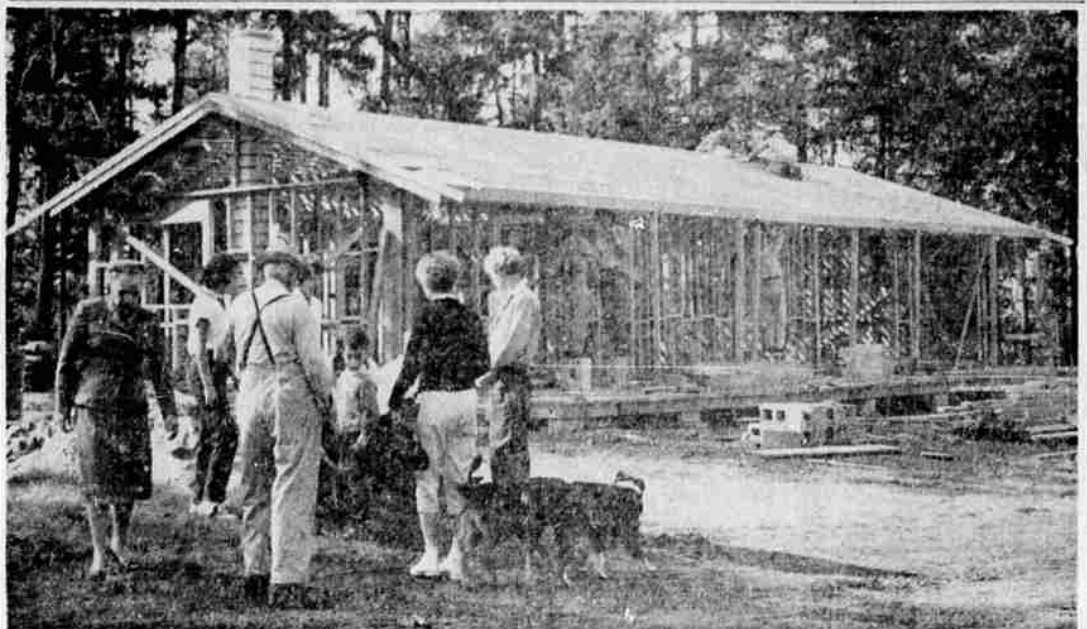
Both women are also bringing more usual exhibits, such as the tray that belongs to Mrs. Miller, and the lace altar cloth from Italy that is a prized possession of Mrs. Warner.

Mrs. C. A. Winetroul is choosing favorite mementos of her extensive travels around the world, and her exhibit will have an international flavor.

In addition, toys and dolls of foreign lands will be gathered from the homes of committee members, to loan a light touch to the displays.

The public is invited to attend the tea, which will be held from 2:30 to 4:30 in the afternoon at Hillcrest. All proceeds from the tea will be donated to the American Cancer society.

Women's News • Social Events



Medford Lions club members are constructing a building and doing other work at the site of the new Girl Scout camp area in Little Switzerland. Work is being rushed in order that the camp area will be ready for use this spring. Lion Herbert E. Seitz is in charge of the project. W. B. Dziarmaga solicited and procured lumber and other building material, and Harve L. Enderby designed and drew up specifications for a lodge; both men are assisting with

the construction. When the project is completed, it is estimated that Medford Lions will have contributed several hundred man hours of labor, and will have procured materials worth about \$3,000. Located only a short distance from Medford, the site will make a year-round camping program available to hundreds of Girl Scouts and their families.

Princess Margaret Described As 'Spirited' by Artist

By GAY PAULEY UPI Women's Editor

New York-The only American artist to paint Princess Margaret sees her as a spirited young woman seeking a justification for her existence.

Barbara Schwinn - Jordan painted the 30-year-old British princess several months before the announcement of her engagement to Anthony Armstrong-Jones.

"I found her voluble, never still," said the New York artist in an interview. "She impressed me as spirited, but disciplined. Restless always. She arranges and rearranges her hands."

"She is a soft, delicate woman with an adorable figure, tiny waistline and little feet and hands."

"I found while we talked that she has a most serious side. We discussed foreign affairs extensively and I got

the feeling she would like to serve her government in some official capacity... maybe an ambassador.

Seeking A Reason "She seemed to be seeking a raison d'être."

Mrs. Jordan also maintains a studio in London and until recently, she and her husband spent four or five months of each year in England. One of her close friends is Mrs. Frederick Erroll, a lady-in-waiting to Queen Elizabeth. Through her, she had a chance to observe Margaret several times - "I decided there was enough in the face to interest me," she said.

She got the commission through a British magazine editor for whom she had done illustrations.

The artist said the brown-haired, blue-eyed princess posed for her for three hours. Another three-hour sitting was scheduled - "but I didn't need it. I had caught Margaret."

Mrs. Jordan, who once did a portrait of her daughter, Jan, in "a furious six hours of work," spent three more weeks on the Margaret work. But the princess never has seen the finished product.

The portrait now hangs in her duplex studio apartment in Manhattan and is copied full-page, in color, in the current Ladies' Home Journal.

Mrs. Jordan has permission to keep for two years the Margaret work and portraits of the English stage and society figures she did on her last London visit, in case she wants to hold an exhibit.

Then Margaret may have it. Talented Artist Mrs. Jordan, 52, is the former Barbara Schwinn of Glen Ridge, N.J. Her mother was an artist and the talented daughter studied in New York and Paris. She had successful careers on fashion magazines and in fashion design before she turned to serious painting. For 30 years she has been married to Bertrand Jordan, an executive with the City Investing company, New York. The couple has two children and two infant grandchildren.

The artist, a pretty brunette woman with huge brown eyes, said that she will do fewer and fewer portraits because "it seems to me the field has gone so commercial."

"I think the world is looking for something in art beyond what is being given it today," she said. "It is starved for creativity. I would like in my own small way to add something..."

"I wouldn't want to go down in art history known only as the woman who painted a princess."



Girl Scouts Joan Eslinger and Sheila Butler visited the Scout's new day camp site recently and were introduced to William Schmidt, former owner of the tract. The camp has been named Tomlin Forest in honor of the late John R. Tomlin, Girl Scout benefactor. The snow-covered peak of Mt. McLoughlin can be seen in the distance. The Scouts are members of Troop 40, St. Mary's school.



Volunteers and Girl Scout officials have been spending many hours at the site of the new Girl Scout camp area in Little Switzerland in order that it will be ready for use this season. Shown here are Mrs. Richard Gray, president of the Rogue Valley Area Girl Scout council, and Michael Beck, president of Medford Lions club. Members of Medford Lions are doing the major construction work at the camp site.

School Club Announces Three Plays

Phoenix High school Mask club will present three one-act plays, "Message from Khufu," "Don't Tell a Soul," and "Willy Velvet, Homicide Detective," in the high school gymnasium Thursday, April 28, at 8 p.m.

"Message from Khufu," by H. Stuart Cottman and Le Vergne Shaw, is a one-act drama which takes place in the midst of an Egyptian sand storm, where four men struggle to enter the tomb of a pyramid. Arthur, the archaeologist, played by Sande Beddoe, seeks to do research on his own, and escape the trickery of another professor. The three men with Arthur, Ben (Eldon Mitchell), Butch (Jack Hoffbuh), and Herman (Doug James) are deserters from the Foreign Legion. Hieroglyphics on the sarcophagus warn of dire peril to those who disturb the sleep of Khufu; but nevertheless the men remove the lid. Only one escapes and how he does makes a weird story.

"Don't Tell a Soul" is a one-act farce with nine women. It shows how gossip is spread and exaggerated in a neighborhood. The gossip starts in when Matilda (Cheryl Bowman) visits her neighbor Angeline Anson (Dorothy Popow). From there it progresses to Sylvia (Pat Kidwell), Luella (Dorothy James), Nancy (Marjorie Brody), Prudence (Peggy Smith), Clara (Becky McAlaster), Susanna (Carole Morin), and finally explodes when Mrs. Ferguson (Darlene Palmer), the poor victim of the gossip, makes her appearance.

"Willy Velvet, Homicide Detective" is a one-act farce which satirizes a radio detective story. The action takes place in a radio broadcasting studio. The audience gets a chance to view the "behind the mike scenes" with announcer, cast, sound effects and all. The cast consists of Willy Velvet (Eldon Mitchell) Margie (Sharon Miller), John (Don Learn), Mrs. J. (Barbara Gysin), Mr. J. (Wayne Singley), Professor (Lewis Cook), and the announcer (Richard Coulter).

These plays are being directed by Robert Myrick, advisor to the Mask club, and Eldon Mitchell, student director. The large production staff is headed by several student chairmen. They are Frances Kievet, make-up manager; James Scott, lighting and house manager; Kay DeMers, property manager; Rod Fowler, publicity manager; Laura Griffith, publicity manager; and Roger Gascon, stage manager.

Applegate PTA To Hold Dinner Applegate - A potluck dinner sponsored by the Applegate Parent-Teacher association will be held April 29 in the school cafeteria. Those attending are asked to take a main dish and either a salad or a dessert. Rolls will be furnished by the executive committee and beverages by the P.T.A.

Serving will begin at 7 p.m. and admission will be by donation.

After dinner, a sale of "white elephants" and plants will be held in the gymnasium and donors are asked to have these articles at school by Friday afternoon.

Since this is the unit's only fund-raising event for this year, the public is encouraged to attend.

Want the quickest of refreshing salads? Combine 1 cup each of freshly shredded apples, carrots and canned pineapple. Mix the juice of 1 lemon with 5 tablespoons of honey and pour over the salad mixture. Bound on crisped romaine leaves, circle with unpeeled apple crescents, top with chopped nuts. Everyone at your patio-party will enjoy this flower-of-a-salad.

To lengthen the life of your rotary beater, tap it sharply over the edge of your hand to shake off any excess. Tapping it on the edge of your mixing bowl is apt to throw it out of kilter.

Delighted Audience Hears Ruth Slenczynska Play

By R. D. WERNER

Ruth Slenczynska, pianist, played to a delightful audience last night to close the season of 1959-60 for Jackson County Civic Music association.

Opening with Liszt's "Legend No. 2," "St. Francis Walking on the Waves," Miss Slenczynska early demonstrated in this bravura piece that all that had been claimed and proclaimed for her, was definitely true. She is without doubt an artist of the first rank.

And this she proved by her playing of Bach's first "Prelude and Fugue in C Major," volume one of the well-tempered clavier. A supreme command of touch brought

out the theme of the fugue at each appearance and the music flowed and soared in true "fuga," flight.

Bowing in the direction of contemporary composers, Miss Slenczynska played a toccata (touch piece) by Louise Talm. This is music of a certain amount of cleverness, but leaves no impression. It was a good display piece for the pianist's staccato technique, however.

Altering the sequence of the printed program, the artist proceeded next with the "Symphonic Etudes" by Schumann. This work is fiendishly difficult, physical taxing and over long. At times it becomes dreary. But pianists who have worked on it appreciate its twisting problems and are duly impressed by as music, it is not of "heavenly length" as Schumann once remarked about Schubert's "Tragic Symphony." Rather it is a piece for the studio or a recital for pedagogues and critics. It attempts too much for the instrument.

And mentioning instruments, it was unfortunate that the artist had to play on the old school piano. A good idea would be for the Civic Music association to try to acquire (there are many ways) a good piano - a real concert grand - of their own. The Community Concerts group in Grants did it. Surely we can do as well as our smaller sister city.

After intermission Miss Slenczynska played several numbers by Chopin with great authority which were a delight. As encores she also played the "Polonaise in A flat" by Chopin, and "La Campanella" by Paganini-Liszt, the later most brilliantly.

Inspection Set For Bethel 55

Official inspection and initiation will take place when Bethel 55, "International Order of Job's Daughters," meets Tuesday, April 26, at 7:30 a.m. at Pythian hall, Fifth and Grape streets.

The inspection will be conducted by Mrs. C. D. Elhart, Medford, deputy grand guardian.

At the last meeting of the Bethel, certificates of proficiency were earned by Senior Princess Teresa Six and Miss Pamela Trowbridge, chaplain.

The meeting was preceded by a dinner attended by about 70 "secret dads," who learned the identity of their "secret daughters."

A candlelight heritage ceremony was presented by the officers and choir members of the Bethel, along with John Eddy, worshipful master, Medford Lodge 108, AF and AM. Miss Patty Selby provided the organ accompaniment.

Blend softened cream cheese into instant vanilla pudding prepared according to package directions. Add well-drained fruit cocktail; chill and serve with ginger cookies. A good dessert made in a jiffy.

Xi Mu Chapter To Hold Session

Xi Mu chapter of Beta Sigma Phi will meet Wednesday, April 27 at 8 p.m. at the home of Mrs. Nils Edin, 1308 Stewart avenue.

Miss Adabe Sailer will conduct the program, "Enjoyment of Man," followed by a group discussion.

Final plans will be made for Exemplar day, May 25.

Calendar

Monday 6:30 p.m.—Medford circle, Neighbors of Woodcraft, Eagles hall.

7:30 p.m.—McLoughlin Parent-Teacher association, boys gym.

8 p.m.—St. Catherine's guild, St. Mark's Episcopal church, at the church.

8 p.m.—Square dancers graduating party, YMCA.

8 p.m.—Degree of Honor Protective association, Girls Community club.

8 p.m.—Crater Parent-Teacher association, catatorium and gymnasium.

Tuesday 9:30 a.m.—Westminster Women's association, Westminster Presbyterian church, Fellowship hall.

10 a.m.—Jackson County unit, American Cancer society, Southern Oregon college, Churchill hall.

10 a.m.—Phoenix Cancer Crusader training, Phoenix Community club.

12 noon—Ella Deuell Hubbs tent, Daughters of Union Veterans, North's Chuck Wagon.

12 noon—Kiwanian Dames, with Mrs. John Dellenback, 257 Windsor ave.

12:30 p.m.—Women's association, First Presbyterian church, Fellowship hall.

1 p.m.—Howard Garden club, with Mrs. John Crocker, route 3, box 55A.

1 p.m.—Travel Study club, Girls Community club.

1 p.m.—Past Chief club, Mrs. Don Ross, Ross lane.

1:30 p.m.—Rogue Valley Herb Society, with Mrs. Otto Nagel, Eagle Point.

3.98

3.98

MATERNITY SEPARATES

At Low LaPointe's Prices

LaPointe's

Large Group at Annual Breakfast

Cave Junction - More than 150 persons attended the annual Easter breakfast held at the American Legion hall by the auxiliary.

Tables were decorated with bouquets of spring flowers and miniature clothes. An Easter lily was on the piano.

Hostess was Mrs. Harold Crowl assisted by Mrs. Howard Yarbrough, Mrs. Mina Henery, Mrs. Marie White, Mrs. Irene McCasland, Mrs. Elwood Hussey, Mrs. Beryl Hines, Mrs. Harry Heartwell and Mrs. Mae Savage. Chairman was Mrs. Arthur Kellert with co-chairman Mrs. Lester Henry.

Stauffer
GUARANTEES RESULTS

Only \$10 for new four-week studio visit course. Lose pounds or inches or money back! That's only 50 cents per visit! **REDUCE-REPROPORTION - LOOK YOUNGER - FEEL BETTER.** For details telephone SP 3-7551 or stop in at our temporary offices, 208 Crater Lake Avenue.

(This Offer for a Limited Time Only)

STAUFFER HOME PLAN STUDIO
Virginia Wickersham, Distributor

Gifts and CARDS
for Mother

Swem's
BOOKS · GIFTS · RECORDS
217 EAST MAIN MEDFORD, OREGON

"The Store of a Thousand Thoughtful Gifts"

Burelson's
MEDFORD

LEG FATIGUE?
here's the comfortable answer

Magi-Lastic
sheer nylon support stockings

Magi-Lastic stockings can be worn with feeling of being well-dressed as well as comfortable and give you the flattery of famous

Exclusive Ventilated Foot

Belle Sharmer
LEGSIZE FIT
so comforting, so soothing
THE PAIR \$4.00

Found Exclusively At Burelson's In Downtown Medford!

YOUR CHARGE ACCOUNT INVITED!

Main and Bartlett Sts. Phone SP 2-6428