

Preliminary Work on Iron Gate Dam Starts

14 MAIL TRIBUNE, Medford, Or.
Sunday, April 10, 1960

Annual Dinner of Clinic Is Slated

Annual dinner meeting of the Southern Oregon Child Guidance Clinic association will be held at 6:30 p.m., Friday, April 29, in the Medford High school cafeteria, according to Harold Snodgrass, 653 J st., Medford, association chairman.

George H. Barnett, San Jose, Calif., attorney and vice president of the National Family Service Agency, will be the guest speaker.

He plans to discuss the psychological needs of children and adults and how a family counseling service can fill this need and become a community asset, Snodgrass said.

"In view of recent efforts by the committee to expand the child guidance clinic to include the family counseling service, Barnett's address will be timely and of public interest," Mrs. Henry Padgham, 2707 Springbrook rd., Medford, chairman of the family counseling committee, said. Anyone wishing to attend the dinner meeting is asked to make reservations by calling the child guidance clinic office, SPRing 3-8211, in the Jackson county courthouse annex.

Michel Named to Head Crater Club

Phil Mitchel was elected president of the Crater Junior High Y club Thursday at the YMCA.

Others elected were Tom Broadbent, vice president; Dennis Charlier, secretary-treasurer; Mark Chartier, chaplain; and Gary Hamilton, sergeant-at-arms.

Retiring president is Don Bramhall.

The organization is open to all interested junior high school boys. The group meets each Thursday at 7 p.m. at the YMCA.

COTTON ON GUARD
New York—UPI—Cotton is a vital ingredient in the nation's early warning system against enemy attack. The first blimp designed specifically for early warning missions, in addition to its detection devices, contains 1,500,000 cubic feet of helium in a cotton-neoprene envelope, according to the National Cotton council.

Advertisement

Arthritis—Rheumatism Vital Facts Explained

FREE DESCRIPTIVE BOOKLET
As a public service to all readers of this paper, a new 36-page highly illustrated book on Arthritis and Rheumatism will be mailed ABSOLUTELY FREE to all who write for it.

This FREE BOOK fully explains the causes, ill-effects and danger in neglect of these painful and crippling conditions. It also describes a successfully proven drugless method of treatment which has been applied in many thousands of cases.

This book is yours WITHOUT COST or obligation. It may be the means of saving years of untold misery. Don't delay. Send for your FREE BOOK today. Address: The Ball Clinic, Dept. 2609, Excelsior Springs, Mo.

A Tribute To Our Bakers!

When you pass a store or a large building, from which a gorgeous, appetite-awakening, yeasty fragrance wafts your way, white-clad bakers are at work. These men, in their tall hats and spotless uniforms, turn out the thousands of golden loaves affectionately known as "the staff of life." They also create myriad of other baked goodies: pies and cakes and rolls and special breads to delight a hundred tastes. . . . all masterpieces of the professional bakers' art. Consider the vital part these men play in our daily existence. . . . the delicious and wholesome nourishment they provide for our tables. . . . the enjoyment they bring each of us. Truly the baker is the happiness maker! We salute his knoed works of art. He is our community's most popular "doughboy" . . . the very flour of our lives!

Medford Pharmacy

101 North Central, Corner 6th • Ph. SP 2-6253

Open Week Days: 8:30 A.M. to 10:30 P.M.
Sundays and Holidays: 10 A.M. to 9:30 P.M.

We Salute Our Town!

Klamath Project To Have 18,000 Kilowatt Output

Preliminary work has started on the California Oregon Power company's second plant in its \$70 million power development program of the Klamath river.

The initial plant in the development, the Big Bend plant, was completed in 1958, and the Iron Gate project, a few miles upstream from Hornbrook, Calif., is expected to be completed in 1961.

The remaining plants, Copco officials said, will be constructed when the electric demand indicates that additional power is needed. When completed, the development program will provide an estimated 315,000 kilowatts from seven hydroelectric plants.

Cost of Project
The Iron Gate project is expected to cost about \$6½ million, and provide a rated capacity of 18,000 kilowatts from a vertical reaction turbine rated at 25,000 horsepower.

Located about 7 miles downstream from the existing Copco No. 2 power plant, the dam will be an earth-fill type with compacted clay core, concrete cutoff wall and grout curtain at the base. Length at the crest will be about 685 feet, and the height above the stream bed will be 173 feet, Copco officials said.

Elevation of the crest of the dam above sea level will be 2,338 feet. The spillway is a free overflow, side channel type with a capacity of 32,000 cubic feet per second.

River Diverted
While the dam itself is under construction, the Klamath river will be diverted through a 16-foot horseshoe shape tunnel, 935 feet long under the right abutment of the dam. Through the left abutment will be a 12-foot steel pipe, concrete encased, for a 250-foot waterway.

The penstock to the power plant will be a 12-foot steel pipe about 400 feet long, capable of handling 1,650 cubic feet of water per second. A substation adjacent to the powerhouse will contain a three-phase transformer capable of stepping up the generator output voltage to 66 KV. A transmission line of standard wood pole construction will connect the substation with Copco's existing transmission system at the Copco No. 2 switchyard, company officials explained.

The reservoir will be operated essentially as a re-regulating reservoir with a capacity of about 58,000 acre feet. The normal operating water surface elevation is 2,328 feet, with a normal low elevation of 2,325 feet.

Inundate County Road
The reservoir will inundate some existing county road, and about 6½ miles will be relocated by Copco. The new road will be owned and maintained by Siskiyou county upon completion of the project.

In conjunction with the state's department of fish and game, Copco will provide a fish ladder, holding tanks, pipe lines and egg taking facilities below the powerhouse. The facilities will be constructed to state specifications, and upon completion, will be owned and operated by the state.

To preserve fish and wild life in and along the Klamath river, Copco will release from Iron Gate 1,300 cubic feet per second between Sept. 1 and April 30, 1,000 cubic feet per second between May 1 and 31, 710 cubic feet per second between June 1 and July 31, and 1,000 cubic feet per second between Aug. 1 and 31.

Copco said it will not fluctuate the river provided that in the event it is necessary to increase or decrease the flow to or about the prescribed flows the rate of change of flow shall not exceed 250 cubic feet per second of water per hour, and that the change in the river stage or elevation shall not exceed three inches per hour as measured at a gauge located not more than one-half mile downstream from the project, whichever produces the least amount of fluctuation.

250 People Employed
Copco estimates that the Iron Gate project will employ about 250 people during its construction.

Construction of Iron Gate dam and powerplant is another step in the company's expansion program, which has been under way to provide sufficient electric power to northern California and southern Oregon since the firm was organized in 1912 with the merger of the Siskiyou Power and Light company, the Klamath Falls Light and Water company and the Rogue River Electric company.

In 1920, the company was reorganized and renamed the California Oregon Power company, and moved its headquarters from San Francisco to Medford.

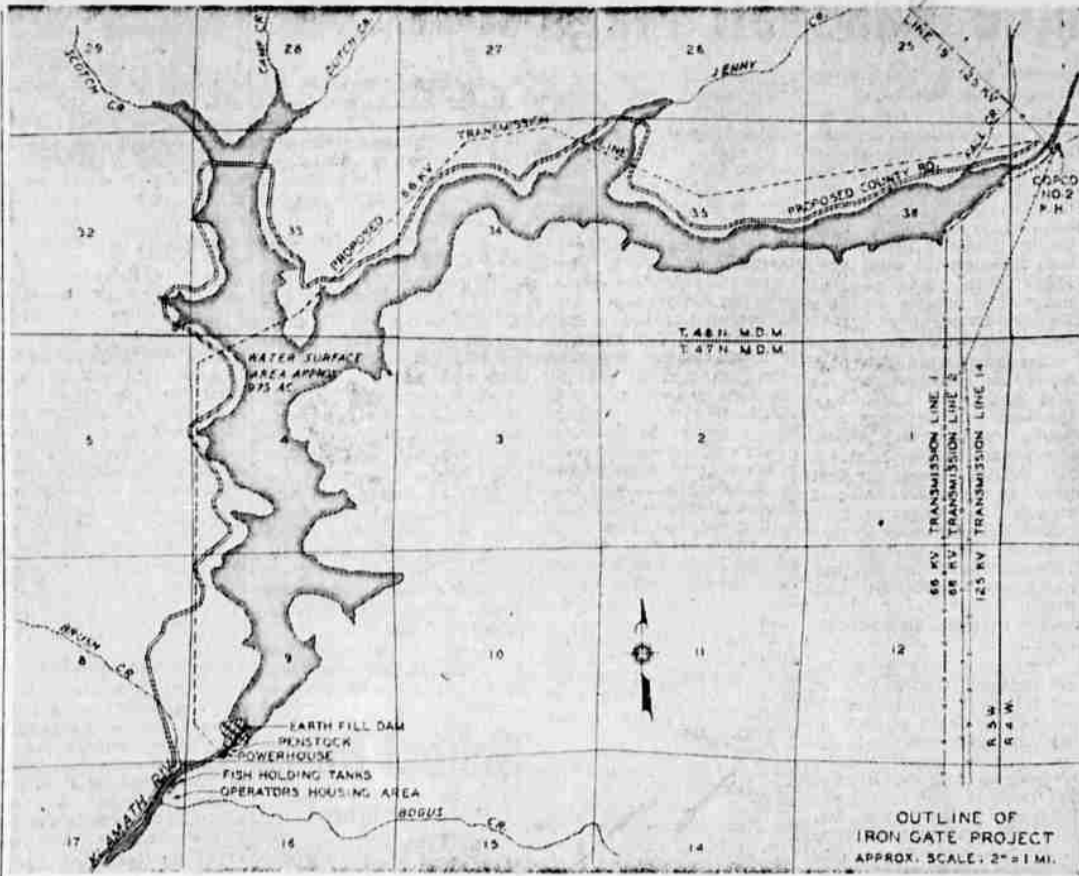
Between 1926 and 1947, the company was owned and operated by Standard Gas and Electric company, one of the nation's foremost public utility holding companies. Ownership was acquired through purchase of Copco's outstanding common stock.

Comply with Provisions
In 1947, however, in compliance with provisions of the Public Utility act of 1935, Standard Gas and Electric company disposed of its interests in Copco to an investment banking group, which in turn made a public offering of the acquired shares of stock.

The company as of Dec. 31 had 21,089 stockholders, chiefly in the three western states.

The Klamath river development program was started after the North Umpqua development was completed in 1956, and a plant was installed at Eagle Point. The Eagle Point plant went into operation in 1957. The North Umpqua development includes eight plants with the last one, Lemolo No. 2 going into operation in 1958.

DANGEROUS HOURS
Philadelphia—Most dangerous period for accidents on farms is from 2 p.m. to 4 p.m. on Saturdays, a Pennsylvania survey showed, and most mishaps involved younger workers and teen-age boys.



MAP OF LAKE—Above is a map of the reservoir which will be made when the California Oregon Power company completes its Iron Gate dam project a few miles upstream on the Klamath river from Hornbrook, Calif. The lake will have a surface water area of about 975 acre feet, the company said. The proposed county road to the north of

the reservoir will be relocated by the company. Fish holding tanks will be located downstream from the earth fill dam. A transmission line will carry power from the Iron Gate development to the company's Copco No. 2 plant, some 7 miles upstream from Iron Gate.

constructed to state specifications, and upon completion, will be owned and operated by the state.

To preserve fish and wild life in and along the Klamath river, Copco will release from Iron Gate 1,300 cubic feet per second between Sept. 1 and April 30, 1,000 cubic feet per second between May 1 and 31, 710 cubic feet per second between June 1 and July 31, and 1,000 cubic feet per second between Aug. 1 and 31.

Copco said it will not fluctuate the river provided that in the event it is necessary to increase or decrease the flow to or about the prescribed flows the rate of change of flow shall not exceed 250 cubic feet per second of water per hour, and that the change in the river stage or elevation shall not exceed three inches per hour as measured at a gauge located not more than one-half mile downstream from the project, whichever produces the least amount of fluctuation.

250 People Employed
Copco estimates that the Iron Gate project will employ about 250 people during its construction.

Construction of Iron Gate dam and powerplant is another step in the company's expansion program, which has been under way to provide sufficient electric power to northern California and southern Oregon since the firm was organized in 1912 with the merger of the Siskiyou Power and Light company, the Klamath Falls Light and Water company and the Rogue River Electric company.

In 1920, the company was reorganized and renamed the California Oregon Power company, and moved its headquarters from San Francisco to Medford.

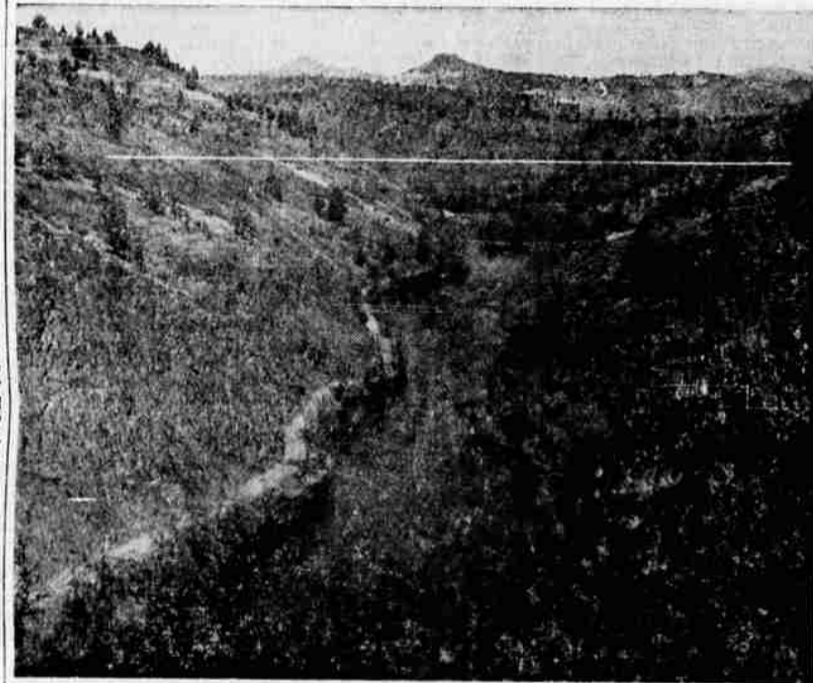
Between 1926 and 1947, the company was owned and operated by Standard Gas and Electric company, one of the nation's foremost public utility holding companies. Ownership was acquired through purchase of Copco's outstanding common stock.

Comply with Provisions
In 1947, however, in compliance with provisions of the Public Utility act of 1935, Standard Gas and Electric company disposed of its interests in Copco to an investment banking group, which in turn made a public offering of the acquired shares of stock.

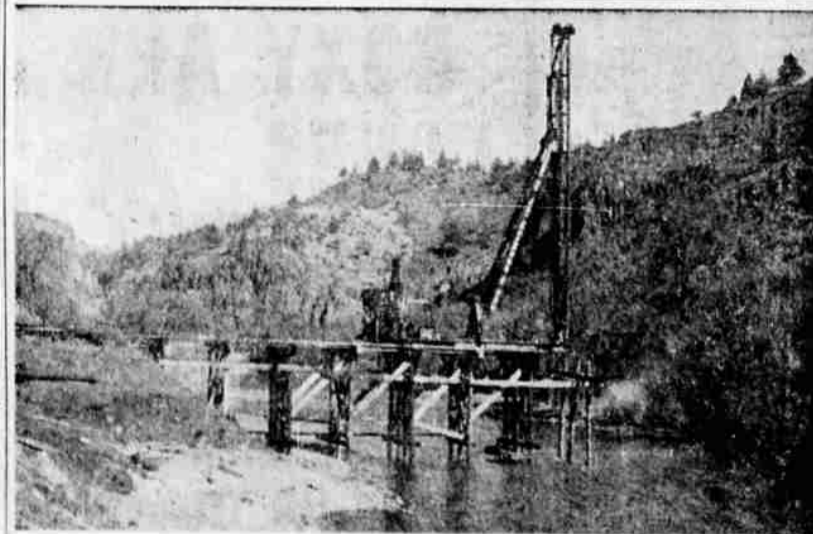
The company as of Dec. 31 had 21,089 stockholders, chiefly in the three western states.

The Klamath river development program was started after the North Umpqua development was completed in 1956, and a plant was installed at Eagle Point. The Eagle Point plant went into operation in 1957. The North Umpqua development includes eight plants with the last one, Lemolo No. 2 going into operation in 1958.

DANGEROUS HOURS
Philadelphia—Most dangerous period for accidents on farms is from 2 p.m. to 4 p.m. on Saturdays, a Pennsylvania survey showed, and most mishaps involved younger workers and teen-age boys.



IRON GATE DAM—Above is the site of the Iron Gate dam on the Klamath river in northern California. The white line indicates the height of the dam above the stream bed. The powerhouse will be located about 100 feet downstream from the dam, and will have a rated capacity of 18,000



CONSTRUCT BRIDGE—This picture of a bridge will be used by workmen in construction bridge being built across the Klamath river and powerhouse, which is expected to be completed in 1961.

Bottle, Coat Hanger Drive Scheduled

Boy Scout Troop 16 of Medford plans a bottle and coat hanger drive Saturday, April 16, troop officials have announced.

The drive is being planned to raise money for the Scouts. Scouts will collect bottles and coat hangers from persons who have them to contribute. Residents having the items may telephone Scoutmaster Dan Kadin, SPRing 2-8007; Roy Kadin, SPRing 2-9886, or E. O. Johnson, SPRing 2-8821.

Springfield, Ore.—UPI—Appointment of Hugh L. Biggs, Portland attorney, as treasurer of the statewide campaign committee of Sen. Ward H. Cook, Democratic candidate for state treasurer, has been announced.

Plans Start for Easter Egg Hunt

Plans are underway for the Annual Easter Egg Hunt sponsored by the Medford Kiwanis club at Hawthorne park April 16. Larry Horton, chairman of the event, said today.

The event will be divided into three age groups ranging from 1 through 3, 4 through 6, and 7 through 9, and will start at 9 a.m. the Saturday before Easter.

Prizes will be presented to those finding special eggs. Some 2,000 children are expected to participate, Horton said.

Agreement Reached in Longshore Dispute

Portland—UPI—A dispute between the Longshoremen's union and the Pacific Maritime Association ended here Wednesday after a conference. Workers were expected to return to the job today.

Salem—UPI—Voters of the Salem school district have approved a 1960-61 budget of \$8,192,085 by a margin of about two to one. The tally was 3,086 to 1,498.

Blossom Festival Activities Listed

Activities scheduled during the seventh annual Rogue Valley Pear Blossom Festival include a parade, a hobby fair, May pole dances, street corner bands and a special merchants promotion, according to Russ Jamison, festival president.

Selection of the young boy and girl, age 5 or 6, who will reign over the events, will be made Saturday, April 16, by a panel of judges representing every valley town. This selection program will be held on television, Jamison said.

The parade will feature both powered and non-powered float entries and is scheduled for 2:30 p.m. Saturday, April 23. The "parade marshal" will be Sen. John Kennedy, who will officiate at the presentation of parade awards in Hawthorne park following the parade.

Girl Scouts from troops sponsored by St. Mary's of

Medford will present the May Pole dances immediately preceding the award ceremonies, it was reported.

Sunday Events
Sunday events scheduled include a big "hobby fair" to be staged at the Camp White domiciliary center, according to festival officials. Special Sunday services at some valley churches are also being planned, the report continued.

Participating merchants in Medford will schedule special promotions to highlight "pear blossom days," April 20-23, according to representatives of the retail merchants committee of Commerce. The four-day city-wide promotion has been planned to compliment the activities of the first major spring event of the year according to Gene Orr, committee chairman.

Street band concerts have been announced by the Ashland High Band Boosters who will be promoting the appearance of the Ashland High band in the Rose Festival Parade later this year.

Parade Prizes
More than \$350 in cash prizes will be awarded to winners in nine separate divisions of the Pear Blossom Festival parade, a spokesman reported.

Official entry blanks for those interested in participating in the parade are being distributed to school children in Jackson county, according to the parade chairman, Jay Pierce.

The invitation had previously been extended to all clubs and organizations in southern Oregon, and many groups have already indicated they will be represented by floats, bands or other entries.

Jamison reminded firms and clubs of the additional provision this year for accommodating larger, powered floats in a separate division. Anyone desiring an official parade entry blank may secure one by telephoning the secretary of the association, Mrs. Richard Wager, at SPRing 3-3661.

Entry blanks are also available at the Medford Chamber of Commerce office, Jamison said. Deadline for filing intention of entering the parade is April 20, but entrants are encouraged to send their entry blanks in as soon as possible to allow better planning of the parade line up.



JUDITH FOREMAN
Essay Contest Winner

McLoughlin Pupil Wins Auxiliary's Essay Contest

Judith Foreman, daughter of Mr. and Mrs. Otis Foreman, 336 Plum st., Medford, won first place in the state essay contest sponsored by the American Legion auxiliary.

Topic was "Why I Love My Country." Since Judith is a ninth grade student at McLoughlin Junior High school her entry was judged in the junior high student's section.

The Medford girl received a cash prize and the Legion auxiliary's Americanism pin in the local contest. The Medford contest was supervised by Mrs. H. L. Alfrod, 517 West 10th st. Mrs. Mable Gearhart, Portland, was in charge of the state-wide contest.

Sirenses Freedoms
In her essay, Judith stresses the basic freedoms of religion, speech and press. America is a government by the people. The country is protected by strong Armed Forces, she said.

"I love America because I remember the people who have fought, shed blood, and died to make this country what it is today. The Americans are still fighting and pushing onward to the future. They are, and will always be, looking forward to the new horizons in the modern world of tomorrow. They are working now to improve and make this country a better place for future generations," the junior high school student wrote.

"In short, I love America because it is everything a country should be. It could be more, but what country couldn't? The Americans know this, and they have, are, and always will work to make it better."

Salem—UPI—Voters of the Salem school district have approved a 1960-61 budget of \$8,192,085 by a margin of about two to one. The tally was 3,086 to 1,498.

Gold Hill Christian Announces Events

Gold Hill—"Gethsemane" will be the sermon subject by Miss Jean Cunningham, minister of the Gold Hill Christian church today at 11 a.m. She will sing a vocal solo entitled "Gethsemane."

Mrs. Leonard Andrews will be pianist, substituting for Mrs. Joe Kavaleski, the regular church musician.

The Intermediate Sunday school class, directed by Miss Cunningham, is leading in the Bible reading and attendance contest. The junior girls class is second, according to Mrs. Andrews, class teacher. Other classes participating in the competition are the high school, led by Clarence Freeman, and the adult Sunday school group, which is supervised by Leonard Andrews.

Mrs. Rex Allison, acting superintendent of the Sunday school said that the attendance contest will end on Easter Sunday and the Bible reading portion of the contest will continue until the end of the quarter, which is the last Sunday in June.

For each chapter of the Bible read during the week prior to each Sunday a leaf representing the person's particular Sunday school class is attached to a small tree. Each visitor is represented on the tree by a white flower designated to one of the four classes. Gay colored leaves of blue, orange, green, and yellow are used for the various classes.

Washington—UPI—House payola investigators have announced that their public hearings on activities of TV disc jockey Dick Clark will open April 26.

KING SIZE

Mattress & Spring Sets

Your Choice of Spring or Foam

From **\$159.50** up

Continental Interiors

1222 S. Riverside
SP 2-4056

SISKIYOU BLVD. 2100

JOE HOSICK
Funeral Director - Co-owner
Medford's Only Crematory

OUR

- Convenient Location, 5 Minutes from Main & Central, saves you, your family, and your friends time.
- Itemized Funeral Service Accounts

SISKIYOU FUNERAL SERVICE

Investigate and Save

PHONE SP 2-5488

ONE CALL ALL WITHIN

Siskiyou Memorial Park

ONLY MEMBER OREGON INTERMENT ASSOCIATION IN MEDFORD

Member Oregon Funeral Director's Ass'n, Inc.
605 HIGHLAND

MEDFORD PAINT and Wallpaper Store

6th & Holly—Diagonally Across from Post Office
PHONE SP 2-9321

We Give S&H GREEN STAMPS

PAINT WITH Treasure Tones