

Technology Aids Production Rise, Beating Demand

Las Vegas, Nev.—Technological changes in dairying point toward production increases which will outstrip the demand for milk and dairy products, at present prices, F. F. Mason, of Washington, D.C., economist of the National Milk Producers Federation, told dairy men at a regional meeting of the organization at the Flamingo hotel in Las Vegas recently.

"Milk production has been stable for the past 3 years but price support purchases by the Commodity Credit Corporation are declining," he noted. "However, recent trends in cow numbers and production per cow when coupled with available feed supplies indicate that we may expect an upsurge in production in 1960 and thereafter.

particularly if beef prices turn downward."

The prospect of more milk practically precludes a price level that will assure farmers of incomes anywhere near comparable with other segments of the economy, Mason predicted.

Confirmed by Economists

"This analysis of the economic difficulties facing dairy farmers was confirmed by a committee of economists and specialists appointed by the National Milk Producers Federation from among the land grant colleges," he continued. "The committee pointed out that dairy farmers must make a choice. Either they must accept prices near current levels, or they must subject themselves to a program which would curtail national milk production to bring about improved prices.

"The committee advised dairy farmers that if they felt that milk production should be curtailed a system of transferable and negotiable bases should be seriously considered. These would not be rigid controls, but would restrict total milk production and at the same time permit individual farmers maximum flexibility in planning the best use of their resources.

"The negotiable quotas

would be factors of production which could be bought and sold on the same basis as cows, land, feed, and other items. The government also could buy bases as a means of reducing production without requiring cutbacks on individual farms."

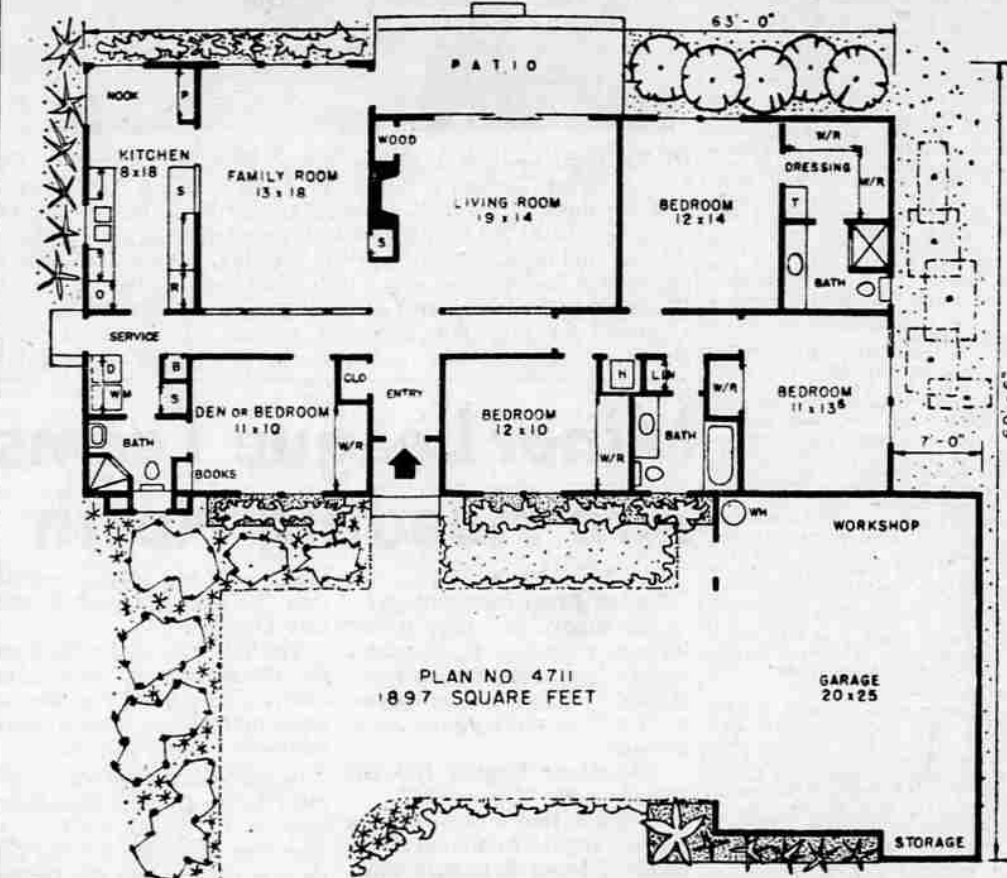
Flynn's Daughters To Get Allowance

Los Angeles—UPI—Two daughters of the late Errol Flynn will receive a monthly allowance of \$200 from one of his insurance policies.

Mrs. Nora Eddington Haymes, second of the actor's three wives, said in her petition that the children, Deirdre, 14, and Rory, 12, have received nothing from Flynn's estate since his death last fall. Distribution of the estate of undisclosed value has not yet been decided. The court approved the allowance from the insurance Monday.

REPORT CASUALTIES

Cairo—UPI—The newspaper Al Ahram reported Monday that 21 persons were killed, 20 wounded and 38 arrested during last week's violent clashes in Iraq between Communists and nationalists.



This Week's Home of Distinction

New Farm Co-op Doing Business In Rogue Valley

After being in operation about a month, the Western Farmers association branch store in Medford is servicing 120,000 fryers in Jackson and Josephine counties and approximately 8,000 turkeys, according to Manager Jack Hankins. The store opened Feb. 22.

"We hope to have contracts covering 16,000 turkeys in the area," Hankins added, "in about a month."

Western Farmers association is a cooperative group serving Pacific Northwest agriculture in Oregon, Washington and Idaho. The association provides integrated marketing and purchasing services to member farmers, the manager explained.

Medford's WFA service branch offers farm production supplies including seeds, fertilizers, formula feeds, and other production equipment. Also, these petroleum products: heating fuel, diesel fuel, motor oil, gasoline, gear lubricants and automotive greases will be available.

Bulk feed and petroleum delivery service will be available to farmers in the Medford-Grafts Pass areas through the branch store, Hankins said.

WFA offers, also, a market for commercial producers of turkeys, fryers, eggs, feed grains and seeds.

WFA is now building a new \$1½ to \$2 million modern, pushbutton feed mill at Portland. It is scheduled for completion late this year, and will mean additional facilities for Oregon members, Hankins pointed out.

By HIWATHA ESTES

This home features a rustic ranch exterior that is so pleasing to many, while offering a modern luxury of three baths, a dressing room and a center hall plan. The oversized garage has space for two cars plus a storage area and workshop.

Three of the bedrooms are just to the right of the wide entry. The master bedroom has its own dressing room and bath. The dressing room has wardrobes on two walls and a dressing table on another. The fourth bedroom or den is separated from the other bedrooms and if not used as a den, could be used as an office or as a bedroom for a relative, guest or an older child. It has a long wardrobe plus a floor to ceiling storage closet which could be used for books or redesigned as a built-in chest of drawers. The three-quarter bath serves a double duty as it is available from both the den and the service.

From the kitchen, you can get to any other room in the house without having to pass through another room. The corner windows in the large nook, together with the window at the sink, flood the kitchen with light. The kitchen has more ample cabinets plus a large pantry in the nook area.

A wall opening above the built-in range opens the kitchen to the family room. Many call the family room the most important room in the house. It can be used for informal entertaining, dining, children's playroom so mother can keep an eye on them while doing her kitchen chores, a television room and most important of all, a room that helps keep the family together.

The patio is accessible from either the family room or through the sliding glass doors at the rear of the living room. Such doors are very important as outdoor living has become an integrated part of the modern family life pattern.

The family and living rooms are separated by a stone fireplace, wood box with storage above and a storage closet which opens into the family room.

A cedar shake roof, stone veneer and planters, together

with wood siding, combine for a very pleasing front elevation.

Complete working drawings of the above plan can be purchased at a cost of \$7.50 for the first set and \$5.00 for each additional set when ordered at the same time. This plan will be available at these prices until Aug. 3, 1960. Please allow two weeks for delivery. If the above home does not entirely meet with your satisfaction, a new home plan book, HOMES OF DISTINCTION, may be purchased for \$1.00. Send all orders for either plans or books to: Hiwatha Estes, P. O. Box 404-T, Northridge, Calif.

Safety Devices Urged for Ponds

Farm ponds are beautiful, have great agricultural value, but can be dangerous, warned C. W. Jensen, chairman of the Rogue Soil Conservation district.

Most of these ponds are near farm buildings and if not properly fenced can be a hazard to small children. Tragic, accidental drowning of small children may result, he said.

Such ponds can be used for irrigation, recreation, stock water, and in case of fire, as a water supply for pumps. They also have great value in raising fish, Jensen suggested. In some areas they have produced as much as \$400 per acre in fish. The total number of farm ponds in the soil conservation districts in the United States is 993,823 ponds. During one year 66,809 such ponds were constructed, as of June 30, 1959. During the same period Oregon had 2,844 ponds, plus 481 irrigation reservoirs. Jackson county has 73 of these ponds.

"I urge and hope that everyone having such a pond on his property will take proper precautions to prevent any tragedy," Jensen concluded.

ATTENDS NATO TALKS

Norfolk, Va.—UPI—Adm. Robert L. Dennison, head of the North Atlantic Treaty Organization's Atlantic Fleet Forces, left Monday for 12 days of talks with NATO commanders in Europe.

FORFEITS BAIL

Hollywood—UPI—Mrs. Florence Adland, 42, mother of the late Errol Flynn's 17-year-old girl friend, Beverly Adland, forfeited \$20 bail Monday on a drunk charge. Mrs. Adland was arrested Feb. 28 outside the home of Jack Andrew Dulin, 32, demanding to see her daughter. She pleaded innocent to the charge and requested a jury trial. Her failure to appear and subsequent bail forfeiture closed the case.

MAIL TRIBUNE, Medford, Or. 7

Tuesday, March 29, 1960

FEARS AXIS REVIVAL

London—UPI—Pravda's Tokyo correspondent has taken a dim view of West German Chancellor Konrad Adenauer's visit to Japan. In a Pravda article relayed to London by Tass news agency the correspondent said the visit was an attempt to revive the World War II Axis alliance between Germany and Japan.

NOW'S THE TIME
to think of
WEED CONTROL
Call
RAYSPRAY
SP 2-9279

ATTENTION! FRUIT GROWERS

Look over this list of the most complete selection of new insecticides designed for you. Norkem Corporation also offers you experienced field service.

SEVIN 50-W gives excellent control of major insects and does not harm fruit. Use SEVIN yourself to get fine finish and more top quality fruit.

The Scab Spray. The Combination of Protection and Eradication has provided superior control of Pear Scab. **CYPREX 65-W**

The Single Insecticide that controls all major fruit pests all season long! **GUTHION**

Controls codling moths, apple maggots, mites, scale, pear psylla, cherry fruit flies. **DIAZINON**

Ability to kill many species plus long residual action add up to Low-Cost mite control. **KELHANE**

Phytomycin, Agrimycin and Streptomycin for effective, efficient Pear Blight Control. **ANTIBIOTICS**

Safe to use and controls all stages of mites and those types resistant to certain other miticides. **CHLOROBENZILATE**

For effective, easy, economical weed control, Norkem has the greatest selection available. **WEED KILLERS**

DILAN W-25 another product to be used against pear psylla up to within 30 days of harvest.

For Experienced Field Service Contact

NORKEM Corporation

ED SMITH

P.O. Box 1133
Medford, Ore. **SP 2-6151**

Are You Pickling Your Seed In Acid Soil?

A soil test will tell you. See your district SCD office, your County Agent or local ASC office.

AGRICULTURE LIME DISTRIBUTING COMPANY

BOX 637 UL 5-1245 GOLD HILL, ORE.

We Will Deliver Your Lime Spread on Your Field

Write Us for Free Copy of "100 Questions and Answers on Liming Land"

Cudahy Gold Bricks

40% Protein Blocks for Cattle

WE'VE GOT 'EM! Famous Cudahy GOLD BRICKS — protein blocks made to the same high standards as Cudahy Mineral Blocks. Come in and let us quote you on Gold Bricks today!

ALBERS FEED & FARM SUPPLY

330 NORTH FIR

"CYPREX IS OUR SCAB FUNGICIDE FOR 1960"

"Without Cyprex, we would not have harvested half our pear crop or held our apple scab in 1959," says grower

R. W. Perry & Son, Box 430, Route 1, Hood River, Oregon grow apples, pears, peaches and cherries on 130 acres.

"In 1958 we did not pick the north half of our interplanted block of d'Anjou and Bartlett because it was almost 100% scab," says Bill Perry. "The south half was not as bad, 15% to 20% scab. This even though we put on a delayed dormant of lime-sulfur and oil, a pre-pink and a calyx spray."

The Perrys tried Cyprex for the first time in 1959. It was applied in the worst scab spot, the north half of the pear block, at pre-pink and calyx. Two non-Cyprex sprays were used on the south half at the same timings. The control was not holding on the south half so they applied one Cyprex spray. Later, a Cyprex spray was applied on the whole block.

At picking time they had obtained equally good scab control in both halves of the block, even though the north half had been far worse in 1958. Furthermore, it received only three Cyprex sprays as against two Cyprex sprays and two sprays with other fungicides in the south half.

"Some fungicides curl our young leaves, making insect control more difficult, but Cyprex does not," says Bill Perry.

"On apples we used a dormant and pink of non-Cyprex fungicides. Then we put on two Cyprex sprays. Before our first Cyprex there was a scab spot on every leaf, even the small ones. The Cyprex stopped it. The scab was dead three to four days after spraying."

How Cyprex works to give long-term protection PLUS eradication

Cyprex is an entirely new fungicide chemical that has proved its value in hundreds of tests over a 5-year period. It works as a protectant and an eradicant in control of scab fungus. It is equally effective against apple scab and pear scab and also controls cherry leaf spot.

Applied as a standard spray, it spreads a tough fungicidal barrier on leaves and fruit that gives top scab control even through heavy rains. Cyprex has built-in spreader-sticker action. Some Cyprex actually "moves around" during rains to cover adjoining new growth, while the original tissue remains protected. Cyprex penetrates throughout the leaf where it works from the inside out—killing scab spores that land. This is called local-systemic action. Even when Cyprex is sprayed after scab infection begins and spores begin to germinate, Cyprex can knock out the infection inside the leaf. The spray also has deposited a protectant covering on the leaf. The next time it rains, this stick-tight fungicide will be ready to knock out new spores before they penetrate.

No fungicide in common use can give you the protection, plus extra-long eradicant action, you get with Cyprex. Cyprex is compatible with most commonly used insecticides and other fungicides. It's non-caustic, low in toxicity to orchard workers.

All the extra advantages you get with Cyprex give you that margin of control that can make the difference between fair and excellent crops. However, none of them eliminates the need for proper timing, good coverage, and a sound schedule.

Consult your local agricultural authorities for further information. Or write for leaflet PE 5061, American Cyanamid Company, Agricultural Division, Los Angeles 54, California.

Cyprex is American Cyanamid Company's trade-mark for dieldrin fungicide.

CYANAMID

CYPREX 65-W FUNGICIDE

CYANAMID SERVES THE MAN WHO MAKES A BUSINESS OF AGRICULTURE

... Make Extra Dollars with ELEPHANT BRAND FERTILIZERS

... because each bushel, ton, crate or bale of crop costs you less to grow. Elephant Brand fertilizers give you L.P.C. — Lower Production Cost per unit and extra profit.

Your Elephant Brand dealer is the man to see. His knowledge and advice will be really valuable to you. Contact him soon.

IT PAYS TO CHOOSE FROM THE ELEPHANT BRAND LINE

11-48-0	13-39-0	16-48-0	16-20-0	23-23-0	24-20-0
27-14-0	8-32-16	10-30-10	13-13-13	14-14-7	
NITRAPRILLS (Ammonium Nitrate)		AMMONIUM SULPHATE		TRIPLE SUPER PHOSPHATE	

LPC

Elephant Brand

water soluble FERTILIZERS

LOWER PRODUCTION COST per unit

EXCLUSIVE U.S. SALES AGENT FOR ELEPHANT BRAND FERTILIZERS: BAKFORD GUTHRIE & CO., LIMITED, SAN FRANCISCO - LOS ANGELES - SEATTLE - PORTLAND - SPOKANE - MINNEAPOLIS