



**SNOW TURNED TO FUN**—The 21 inches of snow that has fallen in the St. Louis area so far this month produced a house full of fun for these children. Elane Kammler, 9, and her brother, Ricky, 12, rub noses, Eskimo fashion, at the entrance to an igloo they built from a huge pile of snow outside their home.

(UPI Telephoto)

**Meteorologists Learn Why More Rain Falls On West Side of Peak**

Corvallis — The reason why the Willamette valley side of Mary's Peak gets nearly twice as much rainfall as the coast side—even though storms usually blow in from the ocean—has been pinpointed by Oregon State college meteorologists.

With the help of weather radar, the OSC scientists have found that as the lower layers of rain clouds glide up the mountain they keep rising on an angle to a "summit" past the Peak. In this area, where the clouds begin to drop down again, most precipitation is dumped.

Measurements of winter rainfall on the Peak are approximately 75 inches for the east and north sides and 40 for the west and south slopes.

The Mary's Peak study, which will be continued through the year, is part of OSC's long-range research on use of radar for mapping storm patterns and for forecasting and observing weather.

A \$5,000 grant was received from the National Science Foundation for the Mary's Peak study and a \$33,000 grant from the U.S. Army Signal Corps Engineering Laboratories for other phases of the extensive program this year. A \$250,000 portable radar set was loaned to the college for the studies by the Signal Corps.

In the past five years since meteorology research was started by OSC, research grants totaling \$160,000 have been received.

Dr. Fred W. Decker, associate professor of physics, is in charge of the meteorology branch of the Science Research Institute. Working with him are Herbert Kershaw Jr., Wilfred G. Jensby, Wendell M. Cook and a group of nine meteorology student research assistants.

OSC is one of only 16 colleges in the country that prepares students for jobs as professional meteorologists with the weather bureau, armed services and research organizations.

**Local People to Attend Conference**

Representatives of the Junior Service League Kindergarten, Medford, are planning to attend the 12th annual conference for parents of preschool age deaf and hard of hearing children scheduled at the Oregon State School for the Deaf in Salem April 10, 11 and 12.

The League kindergarten is one of 12 schools or institutions sending representatives to the annual conference.

One of the speakers scheduled for the second day of the conference, Monday, April 11, is Dr. Jack Ingram, otologist, Medford private practitioner. He will speak on a panel to discuss "Diagnosis and Treatment of the Deaf Child."

Sunday, first day of the conference, delegates will meet in the main building auditorium of the Oregon State School for the Deaf. M. B. Clatterback, superintendent, will give the welcoming speech. The school's activities will be discussed.

Monday's sessions are scheduled to start with a breakfast. Talks will follow on speech, language, lipreading, rhythm and a panel discussion on "Understanding the Deaf Child."

**FFA Names Mollala Youth President**

Pendleton — OPA — Dennis Wood, 18, of Mollala, was elected president of the Oregon State Future Farmers of America for 1960 at the group's state convention here Friday.

Named vice president was Keith Simmons of Enterprise. Annual awards were presented Friday night to chapters and chapter members.

The new 600-foot radar telescope to be built by the Navy in West Virginia will, theoretically, have a range of 38 billion light years.

*Mann's Week*

**SALE**

MORE FOR YOUR MONEY

You share in Savings of 20% to 50% throughout the store!



• special purchase on buccilla needlepoint assorted sizes & patterns

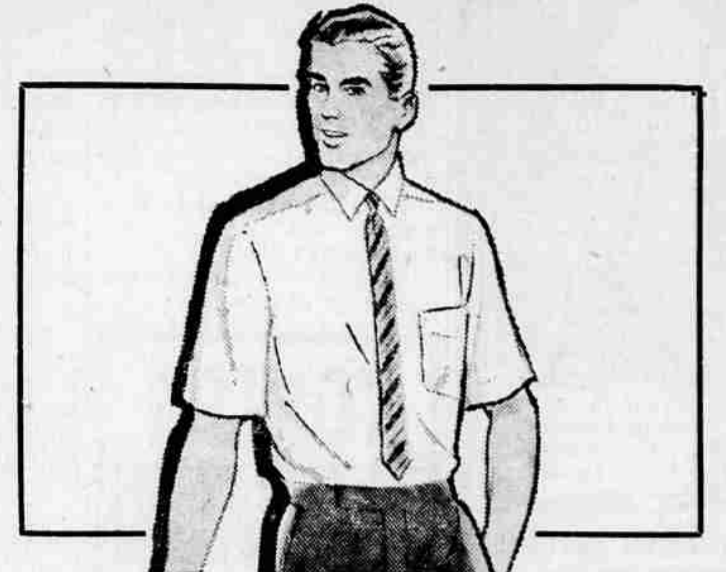
|                         |           |      |
|-------------------------|-----------|------|
| 11x11-13x13             | reg. 1.39 | .89  |
| 15x18-18x18             | reg. 2.49 | 1.39 |
| 16x20-20x20             | reg. 2.98 | 1.69 |
| 23x23-21x27             | reg. 5.49 | 2.98 |
| Tapestry yarn, reg. 98c |           | .89  |



• famous for quality dofan handbags

reg. 5.98 **3.99** plus tax

Beautifully styled . . . expert craftsmanship. You'll want one of these lovely handbags to compliment your spring ensembles. Unusually low priced! White, navy, black, brown and red.

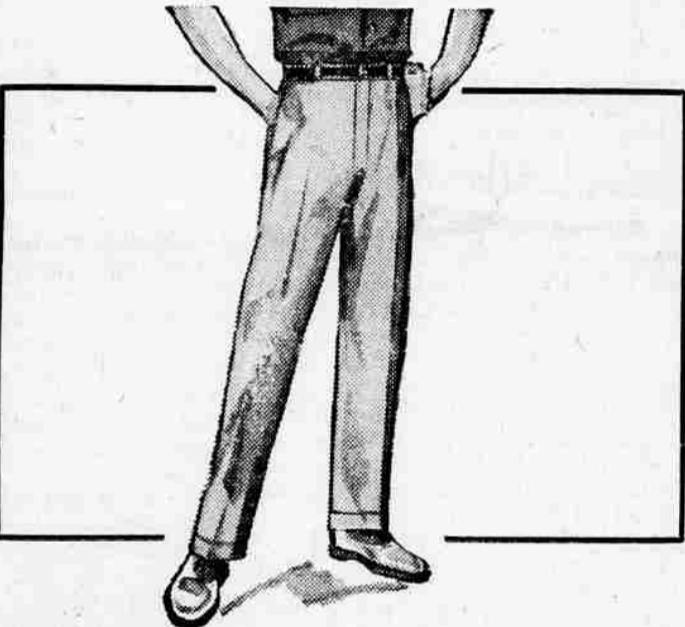


• men's warm-weather short sleeve dress shirt

Today's largest selling model in snowy white fabrics . . . white on white in tasteful patterns. Rich imported pima cottons. Regular 4.00. **1.99**

• new spring styles, men's better neckwear

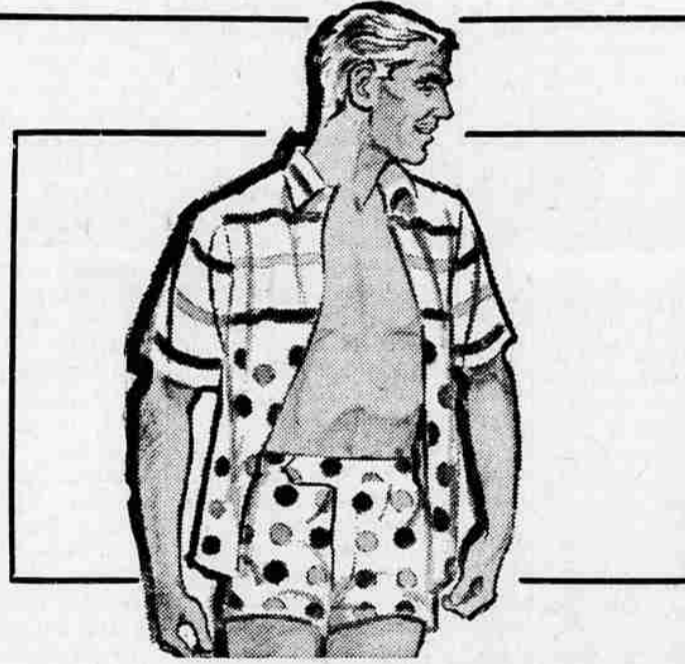
New spring ties from the west's leading producer of fine neckwear. You can afford several at this low price. **.77**



• modern ivy styling boys' polished cottons

reg. 3.98 & 4.98 **2.99**

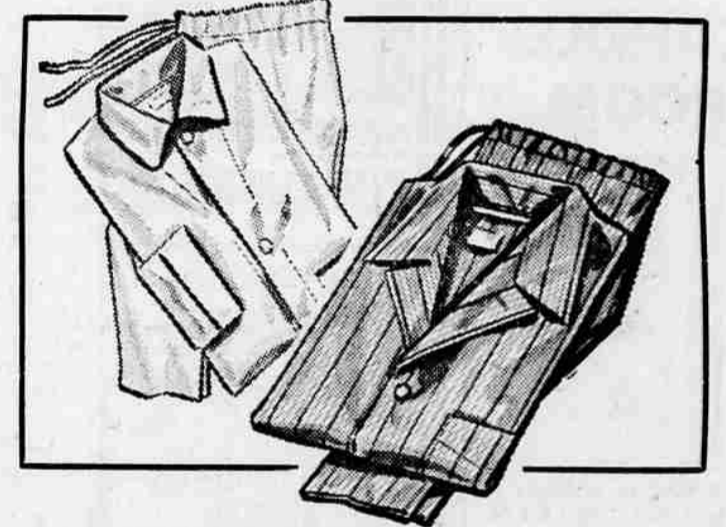
Save as much as 1.99. Satin smooth fabrics. Natural or charcoal. Sizes 6-16.



• men's famous Webfoot cabana sets

orig. 9.95 & 10.95 **5.99**

Bright prints make these shirt and short sets ideal for summer casual wear. Sizes S-M-L-XL.



• salesman's sample line men's pajamas

reg. 3.98 **2.66**

Crisp new spring cottons. Many one-of-a-kind styles. Middy or coat made.

Now you may charge money\* at "Moneyland" . . . THE ONE-STOP STORE FOR YOUR MONEY NEEDS!



Yes, now there's a financial store where you may charge money\* about like charging a hat or a pair of shoes in a regular department store! It's "MONEYLAND" (your nearby Pacific Finance office) — the store that's set up to handle your money

needs, quickly and courteously. So whatever you need money for — to reduce monthly payments, to take care of first-of-the-year expenses, to take a trip, to buy your family the things they want and need — come to "MONEYLAND" and say, "charge it!"

\*Charging money is about like charging anything else — you borrow it now, pay it back later.

**PACIFIC FINANCE "Moneyland"**

16 South Central • Phone 5P 3-5308 Bob Griffith, Manager

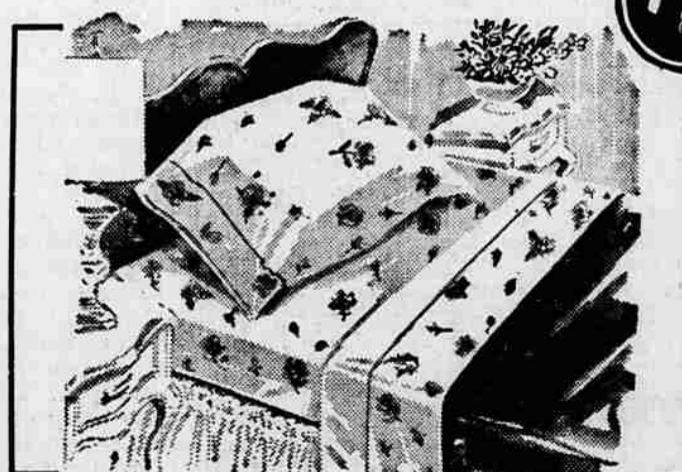
(All loans made under the Oregon Industrial Loan Act) Open Weekdays: 9:00 A.M. to 5:00 P.M. Mondays Until 8 P.M. — Closed Saturdays



• famous Atlantic lightweight luggage

|                 |            |       |
|-----------------|------------|-------|
| VAL-A-PAKS      | reg. 20.00 | 15.99 |
| 21" OVERNIGHTER | reg. 12.00 | 8.99  |
| 24" WEEKENDER   | reg. 14.00 | 10.99 |
| 26" FORTNITER   | reg. 17.00 | 12.99 |

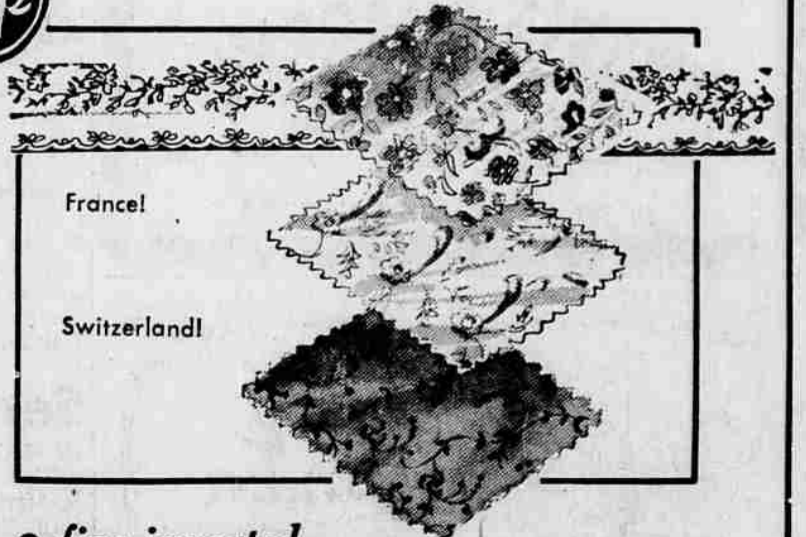
heavy duty nylon, rugged wear



• famous FIELDCREST sheets and cases

|        |           |      |
|--------|-----------|------|
| 72x108 | reg. 4.98 | 3.88 |
| 81x108 | reg. 5.98 | 4.88 |
| Cases  | reg. 1.25 | .88  |

A spring flower garden for your bed. Beautiful new color patterns on the finest of percale.



• fine imported lace trim and eyelet

values to 25c yd. **10<sup>c</sup> yd.**

Dainty trims for dressmaking and sewing notions. Assorted patterns and widths. White only.

Shop all day Monday . . . 9:30 A.M. to 9:00 P.M.!