

GARDENING TIPS

By DON BERRY
County Extension Agent

SOOTY MOLD

"Sooty mold" on the leaves of camellias, holly, and other broadleaf evergreen plants becomes more apparent at this season.

The sooty mold fungus, not harmful to the plant itself, is indirectly caused by scale insects which feed on the plant. These scale secrete a honeydew which drips to the leaves below. The fungus, appearing like soot or a dark dust, feeds on the honeydew. The scale can be seen on the underside of the leaves or occasionally on the leaf petioles (stems). They are rather flat, brown, and attached to the leaf. Cottony egg masses are sometimes seen as well as the brown scales.

Controlling the scale insects will also control the sooty mold fungus. Malation applied in May or August is the most effective. Some like to use a light summer oil now while the plant is still dormant and follow with a Malation spray when the weather warms up. Both of these materials are available at garden supply stores. Directions for use are given on the label.

LAWN MOSS

Moss in a lawn often indicates a lack of soil fertility. Though several factors may encourage the growth of moss, lack of soil fertility is the most important.

Too much shade, poorly drained and compacted soils, very acid soils and improper watering may also encourage the growth of moss.

Several commercial products, available at garden supply stores, will effectively rid a lawn of moss. Follow the directions on the label for using them.

A heavy application of ammonium sulfate—8 to 10 pounds per 1,000 square feet—will "burn" out moss if allowed to remain on the surface without being watered or "rained" in. The grass, though temporarily damaged, will come back rapidly with the added fertility.

Moss can be raked out by hand. If the grass is gone, the raking should be followed by reseeding and top dressing in the spring. Then adopt a good fertilizer program.

Maintaining soil fertility through an adequate fertilizer program is very important. A healthy, vigorous turf is seldom bothered with moss.

Acid soils can be corrected by adding lime. Usually, 75 to 125 pounds of lime per 1,000 square feet every three or four years is sufficient. Poorly drained and compacted soils can be improved to some extent by aerating with a hollow-tined fork or aerator.

FERTILIZE LAWN

The lawn fertilizer program should be started within the next few weeks.

A good lawn fertilizer program is necessary to keep it vigorous and healthy. Vigorous growing grass resists the invasion of diseases, weeds, moss, mushrooms and toadstools.

Lawn grass starts growing with the first warm weather of late winter and early spring. At the rate of growth increases, so does the amount of fertilizer used by the grass.

Grass grows more in the spring than in any other season. Because of this, the spring fertilizer application is very important and should be the largest. Any fertilizer used in the spring should be relatively high in nitrogen. Nitrogen is important for the green color and growth of lawn grass.

Further information on fertilizing lawns is available at

the extension office, Jackson county courthouse.

ONION STORAGE

Store onions in a cool, dry, dark place to prevent sprouting and decay. Ventilated containers such as plastic with holes or a string sack is recommended.

SQUASH SEED

Squash seed is a by-product of Oregon's vegetable processing industry.

The seed is dried and shipped to San Francisco for further processing. One hundred and fifty thousand pounds are sold for human consumption through health food stores and roasters. Only 2,000 pounds are used for bird seed. An estimated 10,000 pounds are pulverized for use in Mexico as a diluent for chili powder and other hot spices.

One squash seed processor believes that a much larger quantity could be used by the confection and nut trade if a practical way could be worked out to remove the seed coat. So far such efforts have been futile. Some squash seed oil is used in cosmetics, but I doubt that it is sold under that name.

TRANSPLANTED WATERMELONS

Transplanted watermelons are getting a boost from research workers at Mississippi State college. Advantages of transplanting include a perfect stand, better weed control, earlier harvest, higher prices, use of F. hybrid seed (no seed waste).

Transplants were grown in greenhouses. Clay pots were found to be unsatisfactory because of root binding and difficulty in transplanting by machine. Best pots are those from pressed manure, then peat, and then paper.

One seed is planted in each three to four inch pot four to six weeks before transplanting time. Temperatures should be kept from 70 to 80 degrees during the day and 65 degrees at night. Hotbeds and even cold frames in some areas could be used for growing the transplants.

The seedlings should be transplanted to the field when all danger of frost is past. Alanape may be sprayed on the field before transplanting to lengthen the weed-free period. Plants should be irrigated immediately after transplanting.

PEAT POTS FOR TOMATOES

Peat pots for tomato transplants also save labor. Early yields can be increased by planting three seeds to each pot and later thinning to one plant per pot.

Success Skirt

9354
WAIST
24"-32"



by Marian Martin

Here's the wonderful pleated skirt that makes all figures look slim and graceful—teams with a color-matched blouse or sweater to make a smart costume. Choose solid or tweed blend.

Printed Pattern 9354: Misses' Waist Sizes 24, 25, 26, 28, 30, 32. Size 28 takes 2 1/2 yards yards 45-inch.

Send FIFTY CENTS (coins) for this pattern—add 10 cents for each pattern for first-class mailing. Send to Marian Martin, Medford Mail Tribune, Pattern Dept., 232 West 18th St., New York 11, N.Y. Print plainly NAME, ADDRESS with SIZE and STYLE NUMBER.

JUST OUT! Big, new 1960 Spring and Summer Pattern Catalog in vivid, full-color. Over 100 smart styles... all sizes... all occasions. Send now! Only 25 cents.

Crime Prevention Chairman Appointed

Salem—UPI—Ed W. Eggen, Portland attorney has been appointed chairman of the attorney general's newly formed Advisory Committee on Crime Prevention. Attorney General Robert Y. Thornton said the committee will assist the justice department's crime prevention division, also recently created.

The new division and advisory committee were established following the recent state-wide conference on crime prevention here.

Eggen is prime minister of Portland's Royal Rosarians, head of the Exchange Club and member of both the board of directors of the Portland Rose Festival Association and the Portland YMCA.

President of Business Agencies, Inc., he is a graduate of the University of Washington and Northwestern College of Law.

FLORIDA FIRST

Florida is the leading zircon producing state.

BORON BOON TO BEETS

Relatively large amounts of boron are needed for heavy production of sound beets of good quality. Beets require boron in much smaller amounts. Soils so low in available boron which may cause severe blackspot in beets may have enough for normal growth and development of beets and peas.

MURPHY'S LAW

Although Murphy's law has been discovered only recently by the missile-men, it has been operating in agriculture for a long time, but nobody has recognized it. This law states, "If it is possible for something to go wrong, it will."

The number of things which can go wrong with a vegetable crop depends on factors not under control. Good control means good management and good management means doing the right thing at the right time.

Bouquet for Brides



7211
by Alice Brooks

Spring garden of flowers to beautify bedroom linens, guest towels. Easy embroidery—and so pretty on white or pastel colors.

Remember, too—handmade gifts mean so much more! Pattern 7211: transfer six motifs 4 x 13 inches; directions.

Send THIRTY-FIVE CENTS (coins) for this pattern—add 5 cents for each pattern for 1st-class mailing. Send to Medford Mail Tribune, Household Arts Dept., P.O. Box 168, Old Chelsea Station, New York 11, N.Y. Print plainly NAME, ADDRESS, PATTERN NUMBER.

JUST OUT! Our New 1960 Alice Brooks Needlecraft Book contains THREE FREE Patterns. Plus ideas galore for home furnishings, fashions, gifts, toys, bazaar sellers—exciting, unusual designs to crochet, knit, sew, embroider.

Salem—UPI—Water J. J. Pearson, president of the 1959 Oregon senate, has filed for reelection as state senator in the 12th district. He is a Portland Democrat.

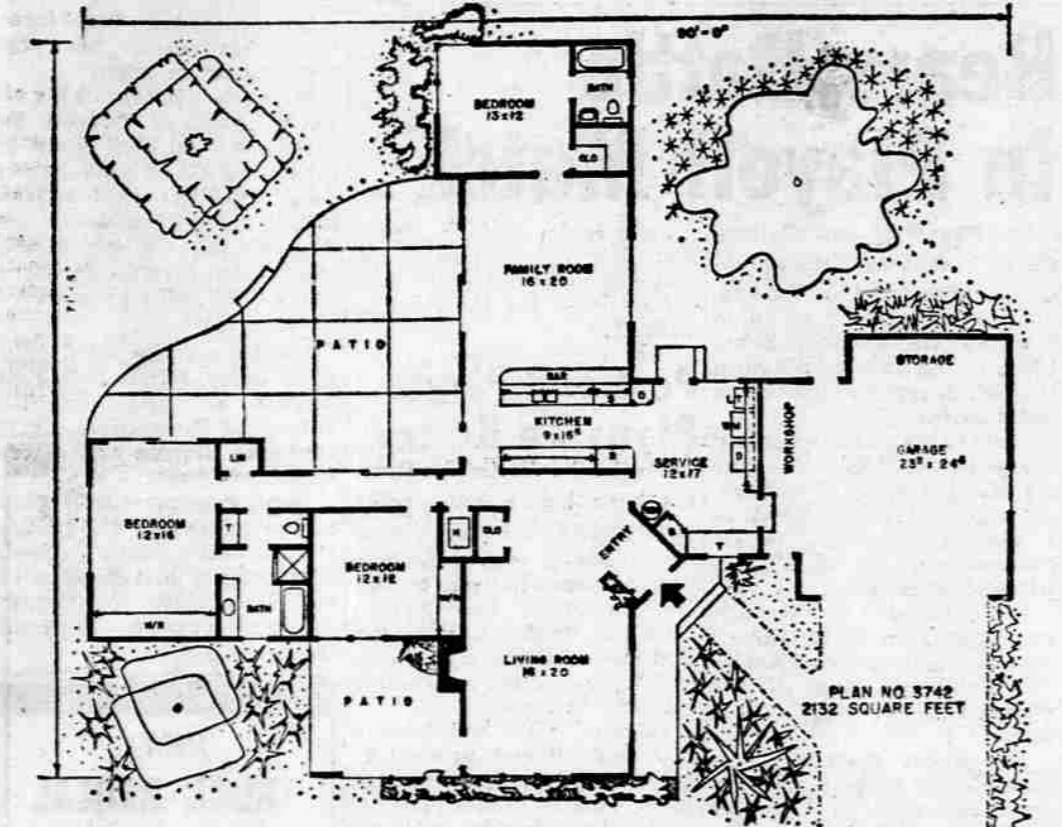
Washington—UPI—Adm. Hyman G. Rickover, chief developer of the atomic submarine, has been chosen to receive the first annual Wendell L. Willkie public leadership award.

huck weave, quilt. Be first with the newest—send 25 cents now!



In Fine Whiskey...
FLEISCHMANN'S
is the **BIG** buy!
90 PROOF is why!

BLENDING WHISKEY • 90 PROOF • 65% GRAIN NEUTRAL SPIRITS
THE FLEISCHMANN DISTILLING CORPORATION, NEW YORK CITY



This Week's Home for Living

Unusual planning divides this house into distinct zones around an entrance foyer to afford maximum privacy and minimum traffic.

The front living room, with its own covered patio, is ideally situated for formal entertaining. The focal point of this room is the large fireplace. An indoor planter partially separates the living room from the entry.

The bedroom wing, with its compartmented bath, is separated from the living room by a row of closets. Access to the master bath is available from both the master bedroom and hall. In addition to both a shower and tub, this bath also offers a dressing table and pullman lavatory.

The strikingly handsome kitchen features the latest in built-ins and is open to both the family room and the extra large service. The service has facilities for both a spacious laundry and sewing center.

The family room is located for maximum enjoyment by the family. An extra long eating bar provides a convenient serving place for family meals.

The third bedroom suite, with its own private bath, is just to the rear of the family room. It can serve as a guest room, a room for relatives or for an older child.

Large glass doors open all important areas of the house toward the rear patio. This makes the patio ideal for informal entertaining and family relaxation.

The front exterior is a blend of both vertical and horizontal wood siding and brick veneer. Brick is also used in the long low planter at the front of the living room wall. Hand split cedar shakes have been specified for the roof of this dream home.

Complete working drawing of the above plan can be obtained at a cost of \$1.50 for the first set, and \$5 for each additional set, when ordered at the same time. This plan will be available for a period of four months from this date. Please allow two weeks for delivery. If the above home does not entirely meet with your satisfaction, a new home plan book, Homes for Living, may be purchased for \$1. Send all orders for either plans or books to Hiawatha Estes, P.O. Box 404-T, Northridge, Calif.

Our Lord says, "Do not be anxious... but seek first His kingdom." Wholeness of life springs

from singleness of purpose. May God grant to each of us His blessings and His peace. "Thy kingdom come, Thy will be done, in earth As it is in heaven." The Easter message is found in Matthew 28:5-6-7 and 20 and Mark 16:15. These should be read frequently.

The weaving and decoration of cotton was a fine art in Peru 3,000 years ago, centuries after it started in India.

Quotes From the News

By United Press International
Memphis, Tenn.—Elvis Presley, refusing to pose with one of the stuffed toy animals with which he filled his home before entering the Army: "It would look a little silly for a 25-year-old man home from the Army to be playing with dolls."

Wichita, Kan.—Petite animal trainer Evelyn Currie, after wrestling a 250-pound tiglon (half tiger-half lion) that had bolted from its cage: "Handling one of those big cats is like holding a machine gun. You never know when it is going to go off."

New York—Jack Paar, returning to his TV show about three weeks after his emotional walkout over a censorship dispute: "Coming back is hard and embarrassing in a way. In a crisis you learn who your friends are."

Reseda, Calif.—Mrs. Darlene Cleary, sister of confessed murderer Dennis Whitney, 17, stating that she and her husband will fly to Miami to show him his family is standing by him: "I guess he never felt wanted. We always admire how well he was taking care of himself. We had no idea it was through robbery."

Christian Word of Warning Told On Approach of Easter Season

By DR. LUTHER HOLCOMB
Presbyterian Minister and Executive Director of Greater Dallas Council of Churches

Written for UPI
As we approach Easter, there is a Christian word of warning and promise to be spoken: "Rich in things but poor in soul." This is a time for self-examination.

Our Lord says, "Do not be anxious... but seek first His kingdom." Wholeness of life springs

-GROW MORE DOLLARS

use **ELEPHANT BRAND** for

Crops fertilized with Elephant Brand produce more, and expense is spread over the larger crop. Each unit, (bushel, ton, bale or crate) costs you less to grow. The result is Lower Production Cost per unit—L.P.C.

Start making extra money from your crop. This year fertilize with Elephant Brand. See your Elephant Brand dealer soon. Ask him about the Elephant Brand water soluble fertilizers for your crops and soil.

IT PAYS TO CHOOSE FROM THE ELEPHANT BRAND LINE					
11-48-0	13-39-0	16-48-0	16-20-0	23-23-0	24-20-0
27-14-0	8-32-16	10-30-10	13-13-13	14-14-7	
NITRAPRILLS (Ammonium Nitrate)		AMMONIUM SULPHATE		TRIPLE SUPER PHOSPHATE	

Elephant Brand

water soluble FERTILIZERS

L.P.C.

* LOWER PRODUCTION COST per unit

EXCLUSIVE U.S. SALES AGENT FOR ELEPHANT BRAND FERTILIZERS: BALFOUR GUTHRIE & CO., LIMITED, SAN FRANCISCO - LOS ANGELES - SEATTLE - PORTLAND - SPOKANE - MINNEAPOLIS

A new kind of bank savings plan that really works!

U. S. NATIONAL'S EXCLUSIVE

HAPPY DAY

SAVINGS ACCOUNTS

It's easier to save when you save for a definite goal such as a new car, a vacation, etc. And it's a "happy day" when each goal is reached. That's why we originated our exclusive Happy Day Savings Plan. The idea is to have a separate account clearly marked for each particular goal. Save a regular amount weekly or monthly—or save whatever you can. There are no rules for Happy Day Savings Accounts. The important thing is to save regularly. Happy Day Savings Accounts earn same high bank interest as regular savings accounts.

Start saving your way to a happy day with a Regular Account or the Happy Day way!

U.S. NATIONAL BANK OF PORTLAND

Special HAPPY DAY PASSBOOK COVERS

Here are eight Happy Day Savings Accounts—each with its specially designed passbook cover.

- NEW CAR
- STORK
- VACATION
- EDUCATION
- NEW HOME
- INSURANCE
- TAX
- ALL-PURPOSE

Make a list of your savings goals now. Then open your Happy Day Savings Accounts at your nearby U. S. National Bank.

Home-Owned • STATEWIDE
THE UNITED STATES NATIONAL BANK OF PORTLAND
Member Federal Deposit Insurance Corporation