

Mortuary Completed At Memory Gardens

Recently completed in the valley was the Memory Gardens mortuary at 1395 Arnold lane, another part of a long-range development program at Memory Gardens, according to Carroll W. Smith, president of the corporation.

The new structure houses complete mortuary services and includes the Chapel of Memories, preparation, arrangements, and slumber rooms. Manager is William S. Ferris.

The chapel has a seating capacity of more than 150 persons and is painted light blue. High recessed windows include indirect lighting and planters and the wood ceiling and beams are painted white. Natural light woods are used for the pews and pulpit. White curtains are framed by beige draperies at the front of the chapel where rose colored lighting is used.

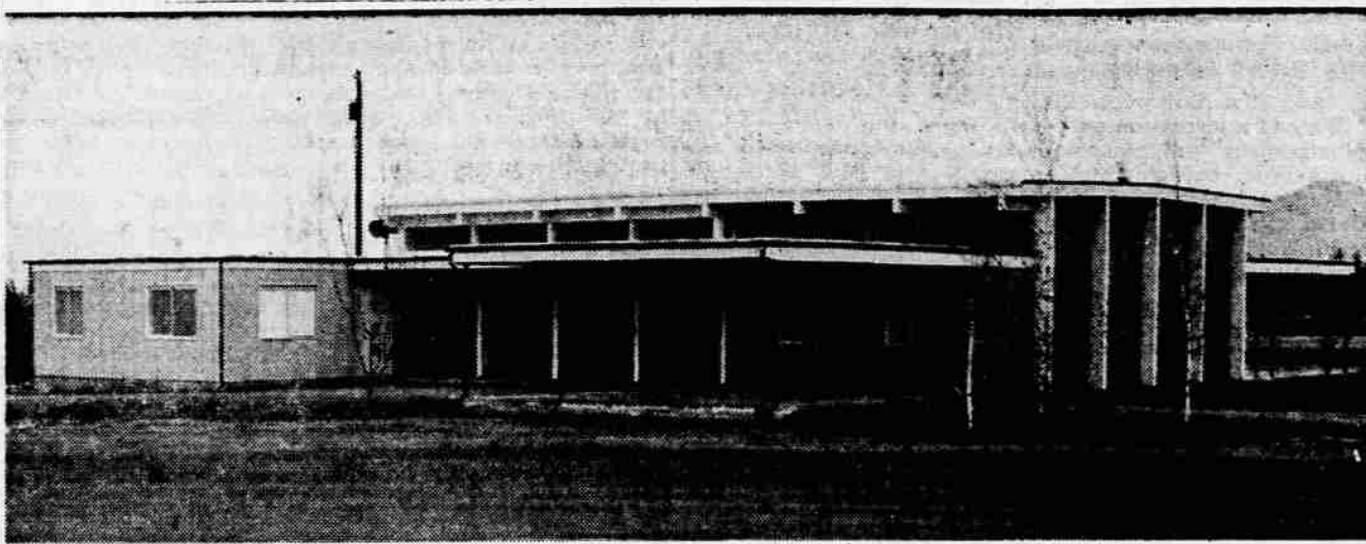
A louvered window and curtain screens the family room from the remainder of the chapel.

The chapel is equipped with stereophonic sound which may be used for background music. Organ and piano will be available for soloists, Ferris said.

The entire building includes 4,500 square feet of space and has gas heating and refrigeration. A sales room is also located in the structure and separate entries to the chapel are available for the family and public.

The one story building is painted in shades of blue and white. An open house will be held later when final work and landscaping has been completed.

Currently under construction at the Gardens is a mausoleum. At the present 13 acres of Memory Gardens are under development of the 40 acres which will be developed with in the long range planning program.



MEMORY GARDENS MORTUARY—New building at Memory Gardens, 1395 Arnold lane, is the mortuary which includes the Chapel of Memories and other related services, William S. Ferris, manager of the Gardens, has announced. The building, of cement asbestos board and plywood construction, is painted shades of blue and white. An open house will be scheduled in the spring when the finishing

touches have been made on the building and the landscaping completed. The family entrance is shown above with the public entrance to the right rear of the picture. The chapel is equipped with stereophonic sound. Pastel colors are used throughout the chapel and other rooms. The mortuary is open for services, Ferris said.

Olin to Speak at SOCTFA Meeting

Bob Olin, director of planning of the Forest Industries Radio Communications association, will speak at the February meeting of the Southern Oregon Conservation and Tree Farm association at 7:30 p. m. Friday in Kim's restaurant.

Elmer Surdam, FIRC secretary-manager, will answer questions on the organization's activities, purpose and aims, according to Dale C. Prentice, secretary-manager of SOCTFA.

"The subject of full FIRC membership has been considered favorably by both the board of directors and our two radio committees," Prentice said.

Ray Offord will turn over the office of president to Glen Dusen. A local barber shop quartet will provide entertainment.

Postman Finds Illegal Use for Mail Cart

New York — A mailman found a new and slightly illegal use for his aluminum pushcart during his daily rounds. Police caught up with him after he'd delivered the mail to a grocery store on his route. They brought back a pumpkin he'd carried off in his cart.

Social Security of \$173 a Month? for All at Age 60!

Hear **BILL TOWNSEND** in MEDFORD at

GIRLS' COMMUNITY HALL
229 N. BARTLETT

MON., FEB. 15, 7:00 P.M.

Learn how every elderly person can receive real Social Security—a matter of right—even if he never worked under Social Security.

Co-sponsored by the **NATIONAL LEAGUE OF SENIOR CITIZENS**
1031 S. Grand Ave., Los Angeles 15, Calif.

and the **UNITED SOCIAL SECURITY ORGANIZATION, INC.**
ATTEND THIS FREE RALLY!!

To 20-30 Club Scannell Speaks

The number of non-support cases reported in Jackson county is the second highest in the state, Chief Deputy District Attorney Gerald Scannell said Thursday.

Scannell, addressing the Medford 20-30 club's monthly dinner meeting, said the Jackson county district attorney's office now has a backlog of some 350-400 cases.

"Lack of initiative," Scannell said, "is the big problem."

He explained that often it is too easy for a person to qualify for welfare payments and thus the individual loses the desire to earn a living. In a case where a man is divorced from his wife, Scannell added, he can not be forced to make support payments if he is not employed.

Creating initiative is not the function of the district attorney's office he said, and the county welfare department "has an inadequate staff—they just can't handle the problem."

"Something should be done," Scannell added, "but I don't know what." He suggested that perhaps various civic organizations might be able to help cope with the problem.

Medford Leads List Of Influenza Cases

Medford continued to top the list with 155 influenza cases reported during the week ending Feb. 12, according to the Jackson county health department.

Ashland was second with 40 cases. Other influenza cases reported include: Shady Cove, 18; Central Point, 11; Phoenix, 10; Jacksonville, 5; and Camp White, 3.

Ashland led with the number of measles cases reported with 18. Medford reported 8, Phoenix 4 and Talent 1. Medford had 5 cases of German measles.

Ashland also had 14 cases of chicken pox. Medford 5, Prospect 6, and Central Point 5.

Shady Cove reported 3 cases of mumps and Central Point 1. Medford reported 1 case of trench mouth and 3 cases of pneumonia.

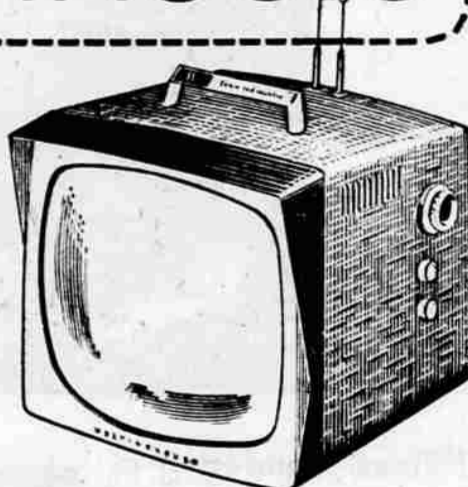
Sky-high quality! Down-to-earth prices during **Westinghouse Annual WHITE SALE**

BIG, BIG VALUES

EASY TERMS

BIG BIG BUYS

WESTINGHOUSE PORTABLE TV WITH A CONSOLE CHASSIS



- Picture sharpens itself electronically.
- Tube Saver saves repairs!
- Automatic Station Selector for best possible reception on each channel.
- Telescoping antenna.
- Stepped-up brightness control for daytime viewing!
- Full 17" screen (overall diagonal measurement)

Reg. \$189.95 TV **\$159⁹⁵**
SALE PRICED

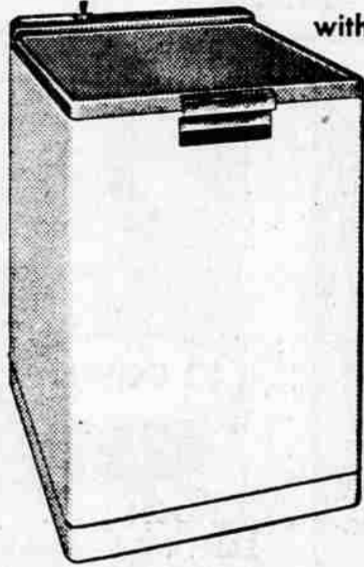
YOU CAN BE SURE...if it's **Westinghouse**

EASY TERMS



No Installation Costs!

Roll everywhere... take it with you when you move!



MODEL SPA-22B

New 1960 Westinghouse Custom

Roll-About Dishwasher

\$199⁹⁵

★ TRUE VALUE PRICED!

Washes and Power Dries Service for 10... Automatically! No more dishpans... dish towels... dish drains! You're free from hand dishwashing forever!

Roll it anywhere... from table to sink to cabinets. Ends stacking and carrying dishes. Just snap hose to faucet... plug in cord... set it and forget it.

- Self-cleaning porcelain wash well... double wall construction
- Only 22 inches wide... stores easily under standard countertop

SIMPLEST TO USE.. EASIEST TO CLEAN!

New Westinghouse 30" Electric Range

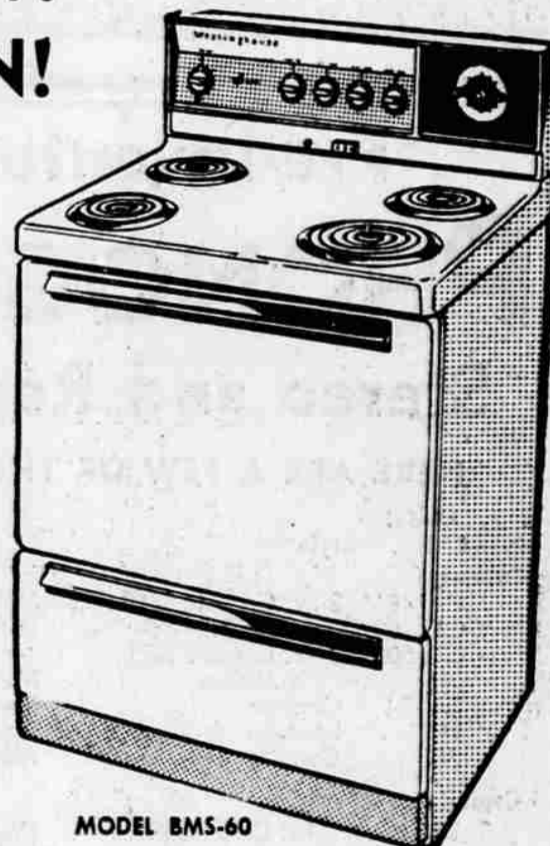
WHITE SALE PRICED (Was \$249.95) **\$209⁹⁵**

Less Reddy's \$20.00 Bonus Allowance

NOW \$189⁹⁵

★ TRUE VALUE PRICED

- King size oven with removable elements, gives perfect results every time
- Surface unit control lets you "fine tune" the exact surface heat you prefer
- Completely automatic
- Deluxe control panel with full width fluorescent platform light



MODEL BMS-60

Double Oven Convenience—at Single Oven Price

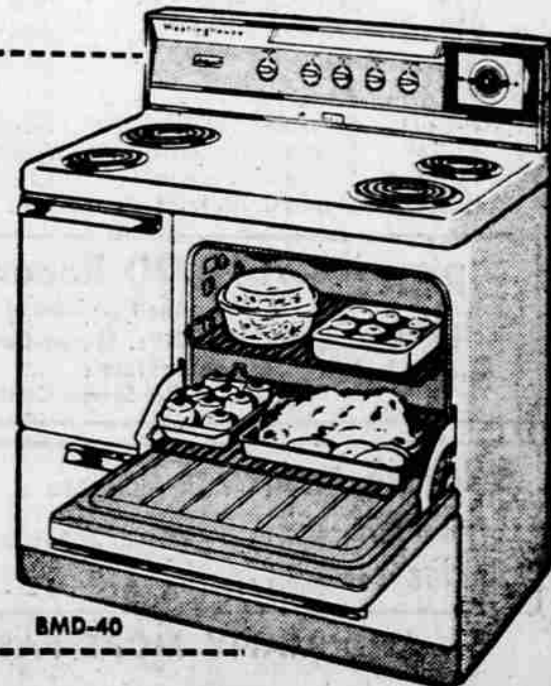
- Bake and Broil at the same time
- For small meals use the thrift oven alone
- Automatic timer for master oven
- Tilt-Out surface units with unlimited heating selections
- Full-width Storage Drawer
- Plug-Out Spread-Even heaters assure perfect baking results every time

Regular Price... **369⁹⁵**

White Sale... **328⁹⁵**

With Reddy's \$20.00 BONUS Allowance **\$308⁰⁰**

★ TRUE VALUE PRICED



BMD-40

IRRIGATION PUMPS
to 60 H.P.
From **\$29⁵⁰** up

1/3 H.P. Shallow Well \$88⁰⁰

1/2 H.P. DEEP WELL
With 42 Gallon Tank and Air Charger
154⁵⁰

Complete **Siskiyon Hardware**
Ph. SP 2-2939—225 W. Main
MEDFORD, OREGON
We Give 5¢ Green Stamps

TROWBRIDGE & FLYNN 214 W. Main St. • **BIG Y APPLIANCE CENTER** SP 3-3052