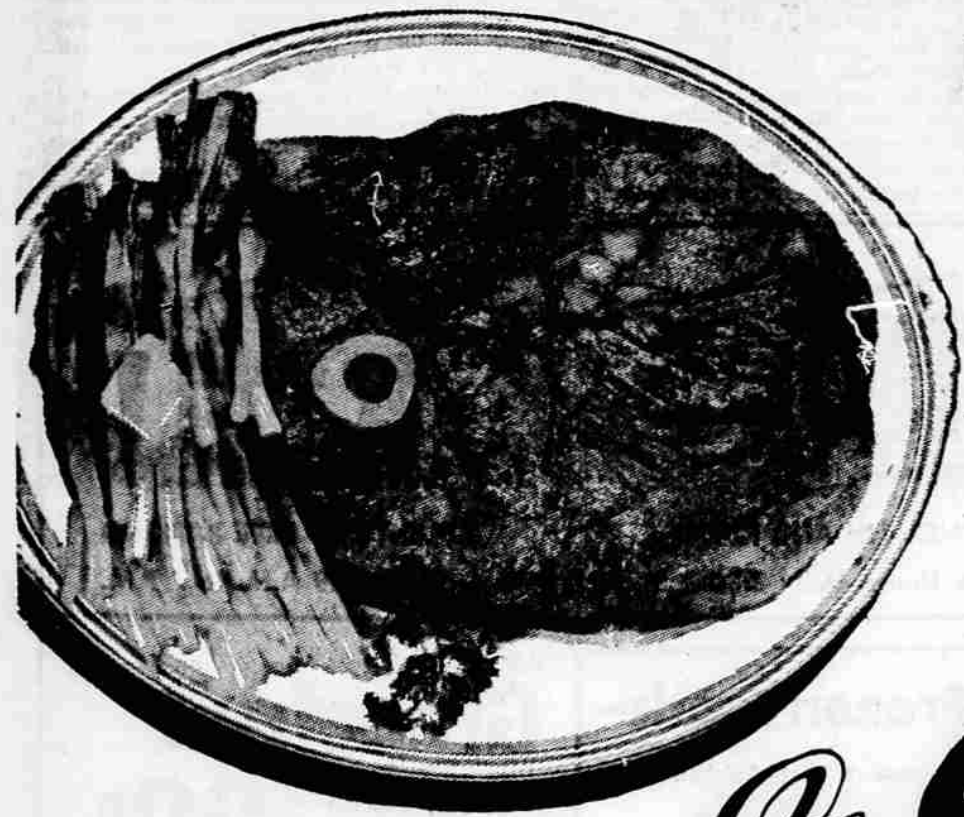


IF YOU'RE NOT TRADING AT THE GROCETERIA YOU'RE PAYING TOO MUCH!



U.S. GRADED CHOICE STEER

# ROUND STEAK

Cut thick for Swiss or thin for pan fry . . .  
YOUR CHOICE

**79¢** lb.

*Groceteria*  
THE PLACE TO GO FOR THE BRANDS YOU KNOW

**CASH SAVINGS HERE!**

Meat prices in this ad good through Saturday, Feb. 13, 1960

Swift Premium Brand—Vacuum Sealed 30c EACH  
**Table Ready Lunch Meat 389¢** PKGS

U.S. Graded Choice Steer  
**Cut Short Prime Rib Steak 79¢** lb.

U.S. Graded Choice Steer—Aged to Perfection  
**Boneless Top Sirloin Steak \$1 19** lb.

U.S. Choice or Swift Premium—Cut Short, Waste Removed  
**Leg - 0 - Lamb Roast 69¢** lb.

U.S. Graded Choice Steer  
**Boned & Rolled Rump Roast 89¢** lb.

Extra Lean—Fresh Made  
**Ground Chuck 69¢** lb.

Midway Meat Co.

TENDERIZED

# HAM

Small Size - Short Shank

SHANK 1/2 OR WHOLE **47¢** lb.

FRESH CAUGHT

Columbia River

# SMELT

Don't Miss This **29¢** lb.

Subject to stocks available due to weather conditions

## GROCETERIA PRODUCE

For our customers—Nothing but the best!

Fresh Hawaiian

# PINEAPPLE

From the Seaview farms of Sunny Hawaii

THE ROYAL FRUIT OF THE TROPICAL WEST

**10¢** lb.



# HEAD LETTUCE

VACUUM-COOLED

Many Sizes for You to Choose From . . . Large, Medium and Small

**13¢** lb.



CRISPY, FRESH!

## Snoboy Fancy California CARROTS

Rich in Health-Giving Elements

**2 Pound Bag 23¢**

## CARTON PACK Farm Fresh Brand TOMATOES

Field Grown in Mexico **29¢** 14-oz. Ctn.

## Snoboy Indian River FLORIDA RED Grapefruit

48 Size **6 for 59¢**  
HEAVY WITH SWEET JUICE

## Many Unusual Features Of Ocean Off Oregon Coast Are Reviewed

Corvallis—The vast expanse of ocean off the Oregon coast looks flat as the rangelands of eastern Oregon but in reality hides peaks and depths that equal any of the state's mountains for size, according to an Oregon State college oceanographer.

After noting the record 7-mile ocean bottom dive made in late January by U.S. Navy scientists in the Marianas, Dr. Wayne V. Burt put together some little-known facts on the ocean floor off Oregon.

About 300 miles west of the mouth of the Columbia, he pointed out, is Cobb Seamount. More spectacular than Mt. Hood, it rises from the ocean floor 9,000 feet below within 90 feet of the surface.

**Canyon at Mouth**  
There's a canyon outside the mouth of the Columbia too. Its steep sides drop some 2,000 feet in one mile and the canyon — known as Astoria Canyon — is 4,000 feet deep.

Forty-five miles off Tillamook on the slope where the coastal shelf slants off into deep water, mountains com-

parable to Mary's Peak are found.

The ocean floor itself has a rather gentle slope in the deep water off Oregon, Burt noted. The ocean "shelf" extends out most places about 20 miles with water only about 600 feet deep. Then, the shelf breaks off and slopes rapidly down to depths of 1,000 fathoms, or 6,000 feet in the next 30 miles. About 400 miles off the coast, the bottom is 2,000 fathoms or 12,000 feet down.

**'Drop in Bucket'**  
What's known about the ocean off Oregon though is "only a drop in the bucket" of the great unknown, Burt said. OSC oceanography research started six years ago represents the first comprehensive studies ever made of Oregon's 350 miles of coastal water — fourth longest coastline of any state.

When the new \$250,000 OSC oceanography research vessel is built late this year, the way will be open to new and detailed findings, Burt added. Funds for the vessel came from the Office of Naval Research.



**SQUAW VALLEY SCENE**—A picturesque scene is caught at Squaw Valley, Calif., site of the VIII Winter Olympic Games. An Olympics skier goes cross country as he heads for the slopes and another day of practice. At right a snow plow starts the day by clearing off excess snow that fell during the night. The icicles give testimony to the low temperatures. —(UPI Telephoto)

Pennsylvania produced 60 million tons of bituminous coal in 1957. The average traffic sign can be read at 225 feet by a person with normal vision.

NO ITEM OVER 88¢ AT VAN LEE'S

for your Valentine

## Perfect GIFTS

For Her! For Him!  
And NOT ONE priced over

**88¢**

Only VAN LEE'S Can Give You SUCH VALUES!



Gift Suggestions for Her . . .



Spring Styles and Colors in Handbags - Wallets - Clutch Bags

Assorted in leather and colorful pastels, guaranteed for one year, unconditionally by Van Lee's . . .

**88¢**

Scented FLOWER CORSAGES

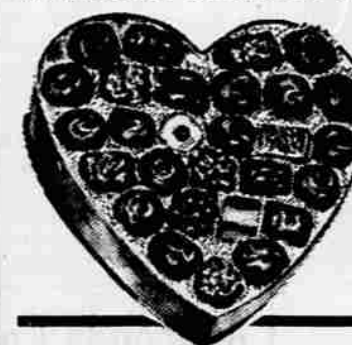
In beautiful colors. Each corsage packed in an attractive plastic box and slightly scented. Made of woodfibre to give years of service . . .

**88¢**

CIGARETTE LIGHTERS

In enamel shades and shell designs an attractive accessory for the woman who smokes. Guaranteed for one year by Van Lee's . . .

**88¢**



Boxed Chocolates

Chocolates made of the finest ingredients, packed in a heart shape box. . . 1 Lb. . .

**77¢**

Luncheon Sets

12 pieces of dinnerware in beautiful shell-white color. Consists of 4 cups, 4 saucers and 4 dinnerplates. A regular \$1.49 value.

**88¢**

Gift Suggestions for Him . . .

CAR MATS

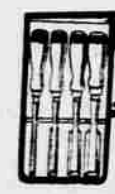
Set of two car mats wrapped in a polyethylene wrapper. A handy and useful gift . . .

**88¢**

THE OVERNIGHTER

The handiest thing for a man. Made of ceramic it will hold his loose change, wallet, and wrist watch between change of clothing . . .

**88¢**



## TOOLS

Largest assortment of tools in Medford at this low, low price. Saws, drill bit sets, chisel sets, crescent wrenches, hammers, tin snips, diagonals and many others . . .

YOUR CHOICE **88¢**

• Additional Values •

PACKAGED VALENTINES Reg. 59c . . . **44¢** Pkg.

PACKAGED VALENTINES Reg. 29c . . . **22¢** Pkg.

Remember! Satisfaction Guaranteed or Your Money Back—at

# VAN LEE'S

127 NORTH CENTRAL

NO ITEM OVER 88¢ AT VAN LEE'S

NO ITEM OVER 88¢ AT VAN LEE'S

NO ITEM OVER 88¢ AT VAN LEE'S