

Plans for construction work on the Highway 99 freeway in this area, and a review of the state highway department's activities in 1959 appears on page 12 of today's Mail Tribune.



United Press International—Full Leased Wire

United Press International—Full Leased Wire

To report improper or non-delivery of the Mail Tribune in Medford, phone SP 2-6141, in Ashland MTU 2-1021, before 6:45 p.m. daily and 10:30 a.m. Sunday. If regular delivery arrives shortly after you call please notify office thus eliminating special messenger service.

"Er... Maybe We Could Patch Things Up"



Copyright, 1960, The Pulitzer Publishing Co. St. Louis Post-Dispatch

RRVID Directors Reject Proposal to Build Dam

Water Year Runoff Expected to Be Below Normal

Water year runoff from coastal streams in southwestern Oregon will be considerably short of the 15-year average, assuming precipitation the rest of the winter will be normal, the weather bureau's river forecast center in Portland has announced.

Present indications in all basins are that the average water year flow will be realized only if maximum precipitation is received, according to the report.

The weather bureau noted that months with above normal rainfall in southwestern Oregon have been few and far between during the past year and a half. The area entered the 1959-60 runoff season with almost the same antecedent precipitation and streamflow conditions as last year.

During September, precipitation was about 150 per cent of normal, the weather bureau noted. October precipitation was one-half the normal amount, and November totals were only 15 per cent of normal.

December precipitation was light and the average of monthly totals was only 40 per cent of normal throughout the southwestern area, the bureau said.

Snow depth at Crater Lake National Park Jan. 4 measured 30 inches, compared with measurements about Jan. 1 of 26 inches in 1959 and 97 inches in 1958.

The water year flow on the Rogue river below the south fork is forecast at 860,000 acre feet, which is only 58 per cent of normal. The water year flow is the forecast for the period from October through September and is based on a 15-year average.

Low Residual Flow The residual flow, that is from January through next September, is forecast at 620,000 acre feet, or 53 per cent of normal.

The water year flow on the North Umpqua below Lemolo reservoir is 245,000 acre feet, or 73 per cent of normal, and at the Upper Klamath lake net inflow, it is 944,000 acre feet or 64 per cent of normal.

In south central Oregon, water supply prospects appear "rather dismal" unless maximum precipitation occurs during the remainder of the season, the weather bureau said. Water year runoff is forecast to be near 50 per cent of normal.

Another problem besides the time and cost factors would have been a storage capacity problem. Total height of the bureau of reclamation dam is 73 feet, according to bureau plans. If the 39-foot high partial dam were constructed, only 1,300 acre feet of water could have been stored since the bulk of the water storage would be in the upper half of the overall 73-foot dam, an MID official explained.

Other dams proposed were at sites on Antelope creek and Lake Creek. In 45 days a better prediction on the water supply outlook can be made and further action may be taken then, the RRVID board decided. Meanwhile, a general tentative policy was adopted requiring all irrigators to use the water as efficiently as possible. If water users fail to use good irrigation practices such as carefully maintaining their head ditches and farm delivery systems they would be cut off immediately, an RRVID official said.

Farmers attending the meeting felt we could possibly extend the water supply by careful use to make a major difference," the RRVID official said. The same official indicated that uniform water-use policies may be adopted by irrigation districts throughout the Rogue valley.

It is extremely unlikely we will get enough rain and snowfall to make up the major water supply deficiency we have now," he concluded. The Agate dam proposal was the second idea presented in the last 30 days to alleviate the critical irrigation water shortage. Some prominent pear-growers had suggested in mid-December that work on expansion of Emigrant reservoir be halted and the reservoir be filled immediately.

Bulletin

Redding, Calif. - (UP) - Five prisoners, described as dangerous, escaped late Saturday night from the Shasta county jail here after wounding one jailer and taking a gun from another.

The five men, imprisoned for forgery and robbery, fled on foot into the streets outside the jail in downtown Redding. Police, sheriff's officers and the highway patrol immediately launched a hunt for the escapees.

All were armed with knives taken from the jail kitchen as well as the .38 caliber revolver seized during the escape.

Nixon Quietly Enters Race for GOP Nomination

Washington - (UP) - Vice President Richard M. Nixon made a soft-shoe entrance into the 1960 GOP presidential race Saturday.

It was his 47th birthday. He dropped the first shoe quietly in Oregon by informing Gov. Mark Hatfield that he will definitely be in that state's May 20 presidential primary.

Hatfield told a news conference that Nixon apparently had "decided to announce his candidacy in this way."

Other shoe in N.H. The other shoe was to fall a little more loudly in New Hampshire, where Gov. Wesley Powell arranged to file papers for Nixon's candidacy in the state's March 8 primary — the nation's first.

Nixon's office stuck to a firm no comment about either event — obviously preferring to let the events speak for themselves, at least momentarily. Now unopposed for the GOP nomination, Nixon has shown no desire to rush the pace of his pre-convention campaign.

Body of Crash Victim Found

Bolivia, N.C. - (UP) - A body found washed ashore at a resort beach was identified Saturday as that of one of 34 victims killed four days earlier in the crash of a National Airlines plane.

The body of Julius A. Frank, Westport, Conn., attorney, was found about 16 miles from here, near Kure Beach where investigators found pieces of fuselage skin and other bits of the plane.

Marine helicopter crews which spotted Frank's body from the air also found a row of three airplane seats on the sandy beach Saturday.

Officials were unable to determine how long Frank's body, without legs, had been in the water. An autopsy was planned.

Investigators piecing together clues to the crash like a jigsaw puzzle called off their search for the last body — that of Carlos Ramos Valdes of Havana, Cuba — and wreckage late Saturday after the most intensive efforts since the pre-dawn crash Wednesday.

Winter Enrollment Tops SOC Record

Ashland - Winter term enrollment at Southern Oregon college hit an all-time high last week when 1,122 students, including 674 men and 448 women, registered for classes.

TRUMAN ATTACKS REDS

Harry Accuses Russians of Missile Invasion

Phoenix, Ariz. - (UP) - Harry Truman accused the Russians Saturday night of using "high handed and brazen military pressure to force their will on the world," by making a "missile invasion" of the Pacific ocean.

The former president said he referred to an announcement by the Soviet News Agency Tass that beginning Jan. 15 and until Feb. 15 the Russians will launch a series of missiles (in the Pacific) for the declared purpose of developing a more powerful space rocket.

"This act of provocation," he said, "is intended missile invasion of the Pacific. The placing of a specific area of open seas under quarantine demonstrates again that the Communists have not changed their methods and that they intend to keep up their military pressure to force their will on the world."

Truman said this action "is as high handed as it is brazen. Without prior discussion or negotiations with us or our allies, the Russians are roving of arbitrarily a large area in the Pacific and have warned that all ships and planes, under whatever flag, keep out of this area for a period of 30 days."

"This part of the Pacific has no proximity to Russian territorial waters and on the contrary, it does involve peace lanes of commerce and air travel, and obviously land and waters of direct and vital interests to the United States and our allies."

"The Soviet Union," added the former president, "has expressed an interest in measures to reduce the common peril of war, but the Russians rarely make moves that have any relation to their words of peace."

"It is clear," he said, "that in this action the Soviet Union is exploiting an advantage that, unfortunately for the world, it now possesses in missiles and satellites and space technology."

The former president's accusation was contained in a speech for an Arizona Democratic party fund-raising dinner, at which he offered some of his typical "give 'em hell" political remarks.

TRUMAN ATTACKS REDS



REACTION - In what looks like a reaction to the current anti-Semitic vandalism, is a house in Brussels, Belgium, daubed with Jewish Stars of David and pro-Jewish slogans. The phrases mean "Long Live the Jews," and "Death to the S.S." (UPI Telephoto)

Cuban Officials Foil Prisoners' Plot to Escape

Havana - (UP) - Cuban revolutionary authorities announced Saturday they had foiled a daring plot by 70 prisoners to escape from La Cabana fortress through ancient secret underground passageways.

The prisoners, some of whom face the death penalty, were among a group of 190 awaiting the start of trials, probably next week. They are accused of complicity in the alleged invasion attempt from the Dominican Republic last August.

Capt. Joaquin Rodriguez, prison chief, ordered a special alert, increased security precautions and cancelled all visits as a result of the discovery.

He began an immediate investigation to determine how the prisoners, who were confined to cell block 13, were able to dig two deep holes toward centuries old underground passageways.

The prisoners apparently discovered the existence of the passages by the hollow sounds of their footsteps as they paced their cells.

The holes discovered by guards were said to be narrow, apparently designed as test borings to see which would be the best direction to dig.

Sports Bulletins

Medford High school cagers turned in their fourth victory against no losses in the Southern Oregon conference Saturday night by downing Grants Pass 69 to 48. The Black Tornado, with Jerry Anderson piling up 24 markers, had 16 to 13, 41 to 28 and 53 to 39 quarter leads. Rex Benner scored 19 for Grants Pass.

The confident Klamath Falls basketball club swooped to a 64 to 46 victory over Ashland high Saturday night on the Klamath gym floor. Sparked by Fred Bighn, the Pelicans dominated all but the third quarter. Quarter scores were 14 to 1, 32 to 14, and 40 to 26. High point man for Klamath was Bob Lewis with 20. Bob Hardy had 12 for Ashland.

La Grande - A second half splurge gave Eastern Oregon college a 64-54 victory over Southern Oregon college, in La Grande last night. The game left each team with a one win one loss record at the end of the first series of Oregon Collegiate Conference play. At half time both teams shared a 30-30 tie.

Prospect - Prospect defeated Rogue River 56 to 33 during cage play at Prospect Saturday night. Dave Carter of Rogue River was high point man with 23. Craig Gardner had 22 for Prospect.

New Rash of Anti-Semitic Incidents Reported in U.S.

By United Press International A new rash of anti-Semitic incidents was reported Saturday.

The painting of swastikas and anti-Semitic statements on Jewish buildings — and a few others as well — brought declarations of sympathy and appeals for tolerance from the Vatican and Protestant leaders.

One group of leading Protestant churches, including Billy Graham, and Dr. Norman Vincent Peale said through the National Council of Churches that the pattern of anti-Semitic behavior appeared to be organized in the same "vicious" way it was in Nazi Germany.

Swastikas were painted on three synagogues, a rabbinical college, a public school and a shopping center in Baltimore. Jewish leaders said they feared the vandalism was the work of an organized group.

The words "Die Jew," also were painted on Temple Beth Shalom in Sarasota.

Swastikas were painted on three synagogues, a rabbinical college, a public school and a shopping center in Baltimore. Jewish leaders said they feared the vandalism was the work of an organized group.

The words "Die Jew," also were painted on Temple Beth Shalom in Sarasota.

Swastikas were painted on three synagogues, a rabbinical college, a public school and a shopping center in Baltimore. Jewish leaders said they feared the vandalism was the work of an organized group.

The words "Die Jew," also were painted on Temple Beth Shalom in Sarasota.

Swastikas were painted on three synagogues, a rabbinical college, a public school and a shopping center in Baltimore. Jewish leaders said they feared the vandalism was the work of an organized group.

The words "Die Jew," also were painted on Temple Beth Shalom in Sarasota.

Swastikas were painted on three synagogues, a rabbinical college, a public school and a shopping center in Baltimore. Jewish leaders said they feared the vandalism was the work of an organized group.

FATAL CAR CRASH

State police reported a fatal traffic accident near Miller's Gulch about 12 miles north of Gold Hill at 10:17 p.m. Saturday.

Two cars were involved in the accident, police said, but neither details of the crash nor identities of the dead or injured were available at press time.

City's Water Outlook 'Poor'

"Poor to very poor," is what Medford City Water Superintendent Robert Lee calls this year's water outlook.

The city expects no water shortage this coming summer because it does not use the maximum amount of water that is normally available, but if next year is as dry as the past and present years have been, then there may possibly be a shortage the summer after next, Lee said.

In anticipation of a possible shortage, the city water commission has authorized the water department to proceed with the design and plan for a \$150,000 water canal which will connect Four Bit creek with the Willow Creek reservoir.

Water From Big Butte Although the city gets its water directly by pipe-line from Big Butte Springs, it must maintain the Willow Creek reservoir for the sole purpose of releasing water into the south fork of Big Butte creek for the Eagle Point Irrigation District. It is necessary to do this in the summer months, Lee said, when the city is using more than its pro-rata share of water from the Big Butte Springs drainage area, which includes the city's source of water at Big Butte Springs. Both the EPID and the city have water rights on this drainage area.

The canal will not be built this year if April's snow survey indicates that the water supply will be adequate, but if past experience means anything, Lee said, it will show an inadequate water supply

and the canal will be built. He said the 3-mile long canal can be built in four or five months so that it would be done in plenty of time to prevent any water shortage for the EPID next year.

The canal will be open only in the winter months and take the surplus water from Four Bit creek routing it into the reservoir.

In predicting a poor water outlook for the coming year, Lee said "it is possible that the precipitation during the rest of the year might make up for present lack of rain but," he added, "very few years that have been as dry as this one has so far, have fully recovered their normal amount of rainfall."

Lee referred to an agricultural year, which runs from Sept. 1 to Aug. 31.

From Sept. 1 through Dec. 31, last year, only six inches of rainfall had been recorded at the city's Big Butte Springs weather station. This is in contrast to the 15 inches that normally fall in this same period and which account for 40 per cent of the annual rainfall.

Last Year Also Dry Last year, which was also a dry year, only 25.27 inches of rain fell at the weather station. This was only 68 per cent of the normal 37.85 inches recorded there.

Lee said averages are based on the years since 1941, when the city started operating the Big Butte weather station. The pro-rata water rights in the Big Butte creek drainage area are divided between the city and the Eagle Point

Irrigation district so that for every 30 units of water that flows through a check point on the city's pipe lines from Big Butte Springs, 100 units must flow through the EPID's check point on the south fork of Big Butte creek.

During the dry summer months the city uses more than its share and opens the dam at the Willow Creek reservoir to permit the flow of water through the EPID check station to increase to the proper ratio.

In the summer months the city finds it necessary to allow an average of 5,700 acre feet of water out of the reservoir to bring the water flow in Big Butte creek to the proper ratio.

More Water Needed At present there are 4,300 acre feet of water in the reservoir, which has a capacity of 7,000 acre feet. This means that an additional 1,400 acre feet are needed so that there will be enough water for the city to meet its obligations this year. Even in the driest year on record, some 1,600 acre feet flowed into the reservoir from the watershed so there will be no problem this year.

However, when this year is over the reservoir will be practically empty with no reserve for the following year. This means that 1960 to 1961 must be a wet year to supply the needed 5,700 acre feet or there will be a shortage.

If and when the Four Bit canal is constructed, however, it will supply enough water to the reservoir to bring it to maximum capacity, even in the driest years, Lee said.

Hillbilly Singer Elected Governor of Louisiana

New Orleans - (UP) - Hillbilly singer Jimmie Davis stormed into his second term as governor of Louisiana Saturday night over dapper Deleesses Morrison, the mayor of New Orleans.

Davis, the sharecropper's son who was governor from 1944 to 1948, will replace Gov. Earl K. Long.

The musician-actor-governor held an invincible 59,000 vote lead over Morrison with 1,902 of Louisiana's 2,109 precincts complete. He had 407,046 votes compared to 343,319 for Morrison, who was losing his second straight try for the governor's mansion.

Morrison grabbed an early lead and held it until the rural precincts began to roll in. Then Davis, who wrote and made famous the song "You Are My Sunshine" in his campaign 16 years ago, roared ahead.

Morrison refused to concede but Davis, who promised to preserve segregation, announced that victory was his. Davis was carrying his entire runoff slate of five candidates into office with him. This included C. C. (Taddy) Aycock for lieutenant governor, who had a margin similar to Davis' in his race with Morrison candidate George Bowdon.

"Good Soldier" Morrison said he was a "good loser like a good soldier."

'Man of the Year' To Be Named Jan. 21 Ashland - The Ashland Chamber of Commerce's first annual "Man of the Year" award will be presented at a banquet Jan. 21 at the Oak Knoll golf course restaurant, the chamber announced last week.

Also to be presented at the joint banquet are the Jaycees' award to Ashland's outstanding junior citizen and the Kiwanis award to the city's outstanding senior citizen.

The chamber said nomination forms must be returned to its headquarters by Jan. 15. Previously the deadline was Jan. 10.

Beall to Review Medford Police

Lt. William P. Beall, Berkeley, Calif., Police department, will be in Medford this week to review the local department's organization and procedures, Chief of Police Charles P. Champlin has announced.

Lieutenant Beall is coming to Medford at the invitation of Champlin and other city officials, the chief explained. The California police officer was in Medford during 1951 at the request of the Medford mayor and city council to survey the local department. As a result of his report at that time the department was completely reorganized.

Chief Champlin explained that he asked Beall to return to Medford due to the elapse of time since the department's reorganization and the city's growth. Reviewed will be record procedures, with the thought of possibly eliminating or changing the current methods; future planning, handling of complaints, and the officer training program.

Beall, who is in charge of the officer training program of the Berkeley Police department, is recognized by other law enforcement agencies for his knowledge of police department organization and his training in this type of police work.

Champlin explained that Beall will spend the majority of his time in the valley at the Medford police station.

WEATHER

FORECAST: Mostly cloudy today and Monday with occasional rain showers in the valley and snow above 3,000 feet. High today 42 and low tonight 32 and high Monday about 45.

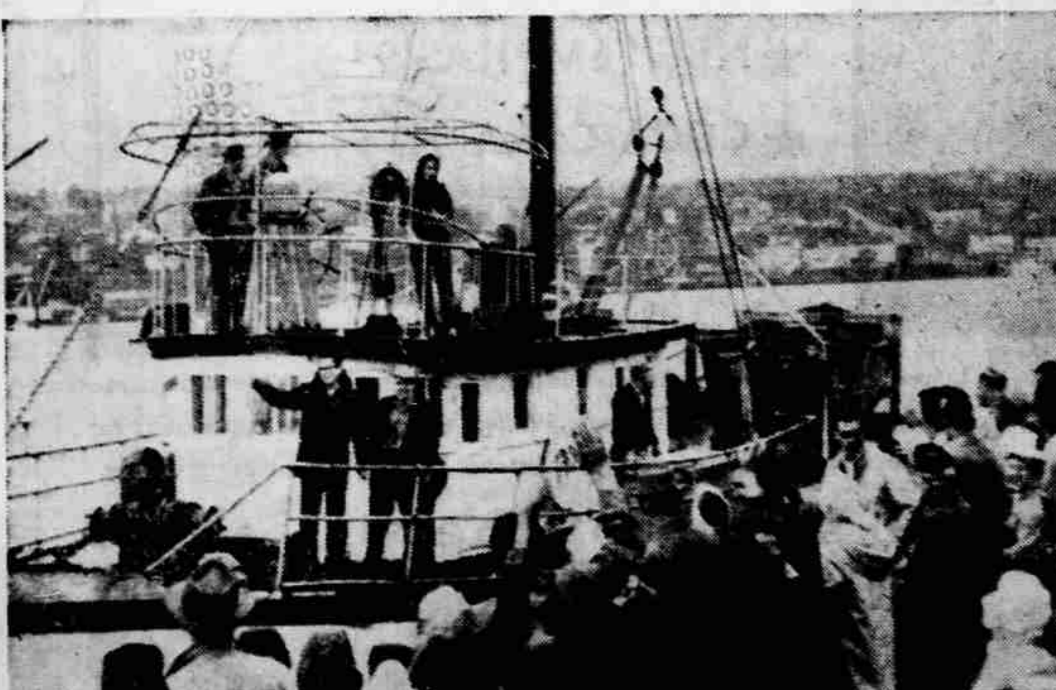
Highest Saturday 45 Temp. 45 Lowest Saturday 34 Prec. to 4 p.m. Saturday trace

Our Skies Tonight

Sunset today 4:57 p.m. Sunrise tomorrow 7:46 a.m. The Moon sets 5:34 a.m. Tomorrow and is in Apogee.

PROMINENT STARS The Twins, rise 5:12 p.m. Capella, high above the Twins.

VISIBLE PLANETS Jupiter, rises 6:03 a.m. Venus, low in southeast 6:21 a.m. Mars, rises 6:48 a.m.



LEAVE SEATTLE - With about 100 people to see them off, the crew members of the 100-foot refrigerated ship, Alert, leave from Seattle dock for a new life in the Galapagos islands, which are off the coast of Ecuador. Twenty-two colonists left Friday to be joined by 10 more who are meeting the boat in Costa Rica. (UPI Telephoto)