



In the  
**MEDFORD  
SHOPPING  
CENTER**



**Nutradiet**

A complete line of Diet, Fruit, Vegetables and Juices. The best for diets.

**NO SUGAR ADDED**

Also

Famous S&W Brand Fruits, Vegetables and Juices — the finest in canned Fruits and Vegetables.

Visit Our  
**GOURMET  
SECTION**  
Full of Fine  
Fine Food  
From Many  
Lands.



**S&W APPLE JUICE**  
24-oz. Bottle 35¢

**S&W TOMATO JUICE**  
46-oz. Can 35¢

**S&W GREEN BEANS**  
Cut, Stringless 303 can 25¢

**S&W CORN**  
Golden Sweet Cream Style — 303 can 23¢

**S&W PEAS**  
303 Can 25¢

**S&W DELPHIA FIGS**  
303 Can 39¢

**S&W APPLE SAUCE**  
303 Can 23¢

**S&W GRAPEFRUIT**  
Whole Sections 303 Can 29¢

**S&W RED WINE VINEGAR**  
4/5 Pint 27¢



# EVERYBODY'S TALKING ABOUT THE GREAT SAVINGS SAFEWAY MAN



Howard (at 130 N. Bartlett) says: "These are just a few of the many, many bargains in our stores."

## Gold Medal Flour

Finest quality "Kitchen Tested" flour. Save up to 40c now on this famous product.

10 LB. BAG **89¢**  
25-lb. Bag 1.99

## Swansdown Cake Mixes

Regular 35c each White, Devils Food, Yellow, Butterscotch. Mix 'em or match 'em.

5 19-oz. pkgs. **\$1**

## Campbell's Soups

All 26 meat and vegetable base varieties at this sensational low price.

7 10 1/2-oz. tins **\$1**

# Minute Maid Orange Juice Niblet's Corn Gelatin Desserts Del Monte Corn

Concentrated Frozen orange juice

6-oz. tin **25¢**

Town House sweetened or natural flavored

46-oz. tin **39¢**

Vacuum pack whole kernel Golden Bantam

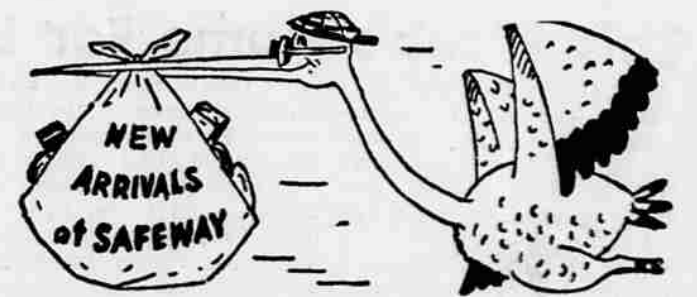
5 12-oz. tins **\$1**

Jell-well 7 delicious flavors

4 3-oz. pkgs. **29¢**

Golden Bantam cream style or whole kernel

5 303 tins **\$1**



Here are a few of the new items available now at your friendly Safeway stores.

- |                           |                                 |             |            |
|---------------------------|---------------------------------|-------------|------------|
| <b>RENUZIT DEODORIZER</b> | Bouquet and Pine                | 6-oz. size  | <b>59c</b> |
| <b>KRAFT CHEESE</b>       | Caraway & Mellow Cracker Barrel | 10-oz. pkg. | <b>49c</b> |
| <b>KRAFT CHEESE</b>       | Cracker Barrel Sharp sticks     | 10-oz. pkg. | <b>55c</b> |
| <b>KRAFT CHEESE</b>       | Cracker Barrel Extra sharp      | 10-oz. pkg. | <b>59c</b> |
| <b>AUNT JEMIMA</b>        | Buttermilk Pancake flour        | 4-lb. pkg.  | <b>59c</b> |
| <b>AUNT JEMIMA</b>        | Buckwheat Pancake flour         | 4-lb. pkg.  | <b>59c</b> |
| <b>Gillette Blades</b>    | Super Blue                      | PKG 10      | <b>69¢</b> |

*Something New!*

**HEINZ  
ROLL RACK**

**INSURES FRESHER,  
BETTER TASTING  
BABY FOODS**

QUICK EASY SELECTION IN OUR STORE

Save on Finest "USDA CHOICE"

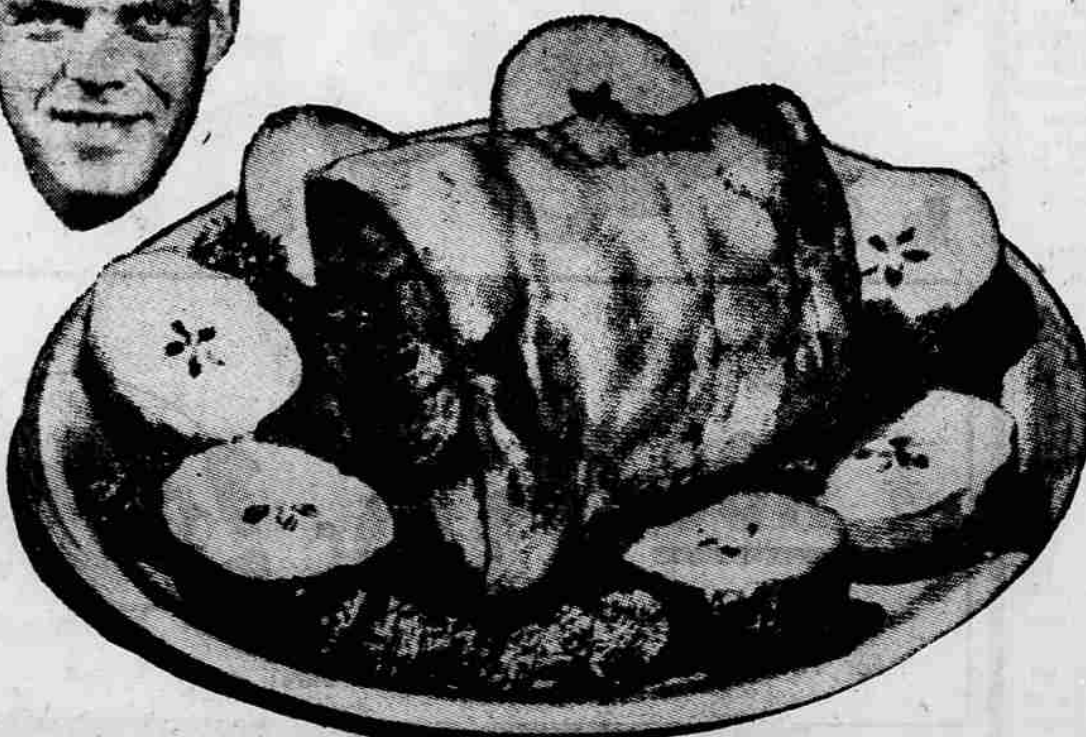
## Freezer Beef

It pays to stock your locker or freezer with the finest—Safeway Guaranteed Meats. Especially at these extra-value prices. And we're happy to prepare your purchases just right for your freezer, at no extra charge.

- |   |     |            |
|---|-----|------------|
| <b>SQUARE CUT CHUCKS</b>  | Lb. | <b>49c</b> |
| <b>FOREQUARTERS</b>   | Lb. | <b>43c</b> |
| <b>HINDQUARTERS</b>   | Lb. | <b>59c</b> |
| <b>BEEF SIDES</b> in assorted sizes                                 | Lb. | <b>49c</b> |
| <b>ROUNDS</b> Trimmed of all excess fat includes sirloin tips       | Lb. | <b>65c</b> |
| <b>TRIMMED LOINS</b> Safeway's famous trim all flank muscle removed | Lb. | <b>89c</b> |



"Marv" the Meat Head (man) says: "The pork you buy here today was squealing yesterday."



**Large Bologna** Grand for sandwiches & snack tray. By the piece. **Lb. 39¢**

## Pork Loin Roast

**Rib End Cut**

Freshly cut from top grade corn-fed porkers. These are the tender, fine grained, medium size loins that average from 2 1/2 to 3 1/2 pounds. Their flavor is superb. Just the thing for brisk weather appetites . . .

**LB. 39¢**

More tender, meaty corn-fed pork at special prices

- |   |   |  |
|---|---|--|
| <b>Whole Loins</b><br>Half or loin end roasts | <b>Pork Chops</b><br>Meaty center cuts and rib chops. | <b>Spare Ribs</b><br>Tender — corn fed country style pork. |
| <b>45¢ Lb.</b>                                | <b>59¢ Lb.</b>  | <b>Lb. 45¢</b>   |

"USDA CHOICE" bone-in or full or half cut

**Beef Round Steaks** or Swiss Steaks. **lb. 79¢**

**Beef Rump Roast** "USDA CHOICE" bone-in, well aged beef. **lb. 79¢**

Prices in this advertisement are effective through January 10th, at Safeway in Medford. We reserve the right to limit.

