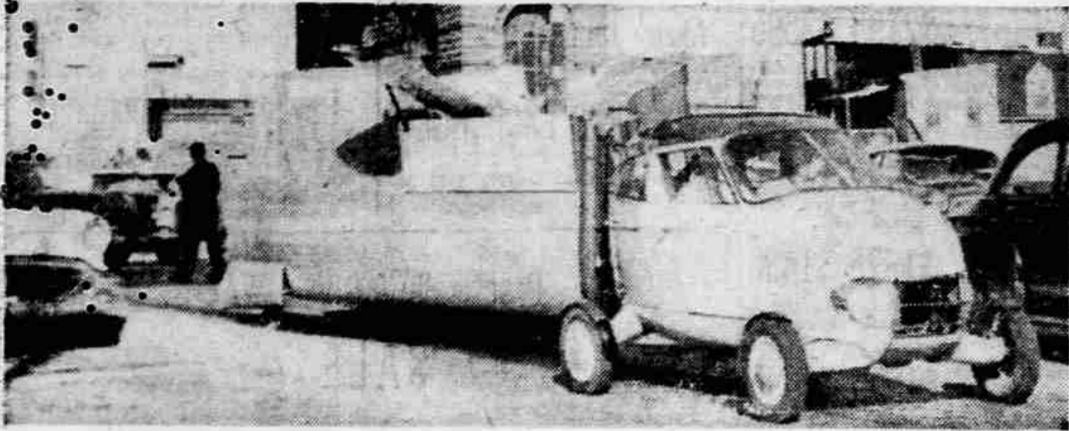




IN SKY OR ON LAND—The Aerocar, flying automobile, taxis after landing at Boston's Logan airport, top photo, The Aerocar, ready for flying, has an overall length of 21 feet, six inches and a wingspread of 34 feet. After five minutes of adjustments after landing, it is ready to face road traffic. Lower photo shows the Aerocar as it leaves the airport to head into Boston traffic. When wings are folded it has a length of 26 feet. (UPI Telephoto)



The Medical Roundup

by *Walter Alvarez*

Emeritus Consultant in Mayo Clinic
Emeritus Professor of Medicine Mayo Clinic

The Homemaker Services

In a recent number of the Journal of the American Medical Association, there is an article by David E. Price, of our Public Health Service, on what is being done all over the country by the Homemaker Service people. To me, it is a very promising and hopeful project, and one that doubtless, with time, will be set up in more and more communities. So often, perhaps in a poor part of town, when a physician goes into a home of sickness, he finds a situation so bad that no medicine that he can think of can possibly help much. Perhaps there is a sickly, slattern, or somewhat alcoholic mother who does not know how to feed and care for seven children and a husband.

When the doctor is very fortunate if he can get a "homemaker" to go occasionally to the house to help the woman to grapple intelligently with the big problems facing her. Or, what can a poor man with a family do when his wife has just died, or has become bedridden, and he has to keep at work? In many a home in which the mother is ill, it would help greatly if an able woman could come in for only two hours a day so that the patient could get a little rest. Or, here is an old, almost bedridden person of 85 or 90 who could get by at home if only someone came in occasionally—perhaps just to do some marketing.

Not Enough Available
As one would expect, there are nowhere near as many "homemakers" available as are needed or could be used, but there are thousands of mature and fine women, warm-hearted, nervously stable, and intelligent, and with their own families raised, who could be recruited and trained; and who would gladly be of great use in their community. Many of these people are being trained today in fine hospitals. Usually, these women do not need much training in home-building because that is an art they know well.

Many of the national associations, like The Cancer Society, The Heart Association, The Tuberculosis Association, The Arthritis group, and The National Health Council, are working on this problem. Booklets are being prepared, which will help in the training of "homemakers." These booklets will be obtainable through the Washington, D.C., Public Health Service. Numbers 644 and 645 are now ready. I do not have any copies to send out.

The Effects of Tobacco
I recently read that a Public Health Service study of 198,926 veterans showed a 32 per cent higher death rate among smokers than among non-smokers. Nearly two-thirds of the 6,203 deaths observed among the users of tobacco were attributed to diseases of the heart, blood vessels and kidneys. The death rate from coronary heart disease was

ORC Reelects Entire Slate Of Officers

Klamath Falls—(UPI)—The Oregon Reclamation Congress has reelected the entire slate of current officers at the wind-up of the group's golden anniversary meeting here.

Hold-over officers included Harold Hursh of Huntington, president; Carlos Randolph, Madras, vice president; Marvin K. Shearer, Corvallis, secretary; W. E. Buell, Portland, treasurer and LaSelle Coles of Prineville, director from Oregon to the National Reclamation Association.

To Go To Denver
The board of directors said it would set time and place of the 1960 Oregon convention at its January meeting. Many of the 70 members who attended here plan to go to Denver for the annual convention of the national organization Oct. 28-30.

Oregon Secretary of State Howell Appling Jr., who was the scheduled speaker Tuesday, was reported ill and William E. Welch, secretary of the national group, filled in for him.

Portland—(UPI)—The Interior Department said Wednesday that water temperatures of the Columbia river were less than average in 10 of the 12 months ending in September.

Hungry for Home Made Bread?



YOU CAN SERVE IT TONIGHT!
Mixes in minutes... you just add water and your oven does the rest. So easy. Perfect results every time. Four big nourishing loaves of golden-crust goodness from each package. Write for FREE recipe booklet **SPRUANCE OLD FASHIONED BREAD MIX** Russell Spruance Co., Phila., 47, Pa.

Long Glass Fibers Defect Radiation

Chicago (Science Service)—A better method of detecting dangerous gamma radiation may result from attempts to increase the radiation sensitivity of glass. Scientists at Armour Research Foundation of Illinois Institute of Technology here are using long glass fibers, especially coated, to achieve greater sensitivity. The glass fibers can be calibrated like a thermometer. Exposure to radiation darkens them, permitting an immediate reading. The fibers can be coiled into a small spool or disk and worn by laboratory and military personnel. It is conceivable that this type of glass dosimeter could replace film, which must be developed to reveal the extent of exposure.



"Halloween Capers"

Family Weekly Cookbook Section

It's time again for one of those bewitching parties with food that is gay... and quite possibly bewitched. Read about these clever recipes in

October 25th *Family Weekly*
With Your
MEDFORD MAIL TRIBUNE

Paper Profits, Losses Not Considered for Tax Purposes

By **ELMER C. WALZER**
UPI Financial Editor
New York (UPI)—This is the time of year when tax selling gets under way in the stock market.



Elmer C. Walzer

Tax selling is the process of establishing gains or losses for income tax purposes. To register a gain or loss the security involved must be sold.

Funds Pile Up
Selling of this type piles up investment funds which together with year-end dividend and interest payments rise to a sizeable total. They often are reinvested in late December, producing the traditional year-end rally that often carries into the new year.

Here is where the capital gains tax functions. Those with long-term capital gains from stock or other property transactions only pay a tax that works out at 25 per cent instead of the surtax rates that run as high as 91 per cent.

The capital gains tax is one of the few ways one can amass some capital. It's mighty difficult to get together a pile of money on the usual income taxes.

Six-Month Minimum
To operate on the 25 per cent rate (actually 50 per cent of 50 per cent of the long-term gain) the property sold to establish this gain must have been held for more than six months. It's one minute less than that the tax collector just doesn't accept it. The word "more" is the important one in this category—more than six months.

Of course, one can take losses too. And one can take short-term gains. Short term gains or short term losses are those on property held six months or less.

This year's tax selling is expected to run higher than last year but under 1957. Not a small amount of it may be in preferred stocks, and in bonds because these two have shown declines.

The object of registering losses is to use them to offset gains.

You can sell up to the last tick on the stock ticker on Dec. 31 to establish losses.

You must sell on or before Dec. 24 to establish gains for 1959 in the regular way. If you want to establish a gain after Dec. 24 the same must be for cash and immediate delivery.

LAW'S STRONG ARM
Kyoto, Japan—(UPI)—Japanese policemen are noted for their rigid interpretation of the law. Five vegetable peddlers flipping coins to see who paid an 83-cent restaurant check were arrested on gambling charges and kept overnight in jail.

Standard & Poor's suggests reviewing one's portfolio now for tax purposes and at the same time considering some advantageous switches.

Standard lists methods of procedure in tax operations:

"First, sell your bonds or stocks priced below cost to establish a tax loss.

"Second, sell enough of your 'frozen' holdings to absorb the capital loss in the aforementioned transactions."

Then comes the operation of matching long-term gains against long-term losses, and short-term gains against short-term losses.

Helps Higher Income
The 25 per cent capital gain tax doesn't begin to do one any good until his taxable income reaches \$18,000 for a single person, and \$36,000 for a married couple filing a joint return.

repurchased for 31 days or longer. term capital gains since in regular tax procedure they are only taxed on 50 per cent of the net capital gains.

natural regularity
GUARANTEED or Your Money Back

TRY THIS
3-Step Plan
FROM
UNCLE SAM
Luxative CEREAL

HERE'S ALL YOU DO...
1. Get 2 packages of this delicious blend of toasted whole wheat flakes and toasted whole flaxseed at your grocer's.
2. Eat 2 servings a day — at breakfast, lunch or bedtime. Include ample liquids in your daily diet.
3. Finish both packages. You'll receive welcome aid... or your money back.

Start this easy, 3-step plan today. If you're not completely satisfied, just send tops from both wrappers to **UNCLE SAM BREAKFAST FOOD CO.**, Omaha. Your purchase price will be refunded.

Get your 2 packages of **UNCLE SAM** at your favorite food store.

Thompson Seedless RAISINS 79¢ 4 lb. Bag

CRISCO SHORTENING 73¢ 3 lb. Tin

Bisquick 75¢ 2 large pkgs.

Nalley's POTATO CHIPS 79¢ 2 LARGE FOIL BAGS

Derby All Beef TAMALES \$1.00 4 13½-OZ. JARS

Famous "Libby's" PUMPKIN 49¢ 4 NO. 303 TINS

Hills Bros. COFFEE \$1.37 2 lb. Tin

ED MILNE'S QUALITY MARKET 222 WEST MAIN
EASY TO PARK ON THE WEST SIDE
WE ARE CLOSED SUNDAYS

Swift's Premium—Tender Grown Fresh Fryers 38¢ lb. Whole or Cut Up Freezer Wrapped — 10c Each

BABY STEER BEEF LIVER 69¢ lb. Fresh Sliced

FRESH RAINBOW TROUT 29¢ or 4 for \$1.00 9 to 9½ INCHES LONG

Boneless PORK LOIN ROAST 85¢ lb. Choice Eastern Pork

PURE PORK Sausage 49¢ lb. 2 lbs. 89¢

FRESH GROUND STEER BEEF 39¢ lb. 10 lbs. \$3.75

FRESH PACIFIC OYSTERS 69¢ FULL PINT SMALL SIZE

"Choice" Aged Steaks
Round Steak or Swiss. lb. 98¢
T-Bone Steak well trimmed lb. \$1.19
Boneless Sirloin Steak Grand Flavor lb. \$1.39

U.S. No. 1 KLAMATH POTATOES 25 89¢ Lb. Bag

SUNKIST VALENCIA ORANGES \$1.00 3 DOZ FOR JUICE OR LUNCH BOX

Bright Green ZUCCHINI SQUASH 39¢ 3 LBS

LOCAL NEWTOWN APPLES 5 49¢ LBS None Finer For Cooking

FREE DELIVERY
Phone SP 3-7444