

Sales by Retail Establishments Here Show Rise

Sales by retail trade establishments in Medford during 1958 totalled \$58,079,000, an increase of 17.5 per cent over 1954, according to preliminary data released today by the bureau of census.

The bureau's census of retail trade covering 1954 showed that retail sales that year by Medford totalled \$49,424,000.

The current census shows Medford with 344 retail establishments in 1958, Ashland with 113 and the entire county, 686. Ashland's retail sales in 1958 totalled \$10,359,000, and the county as a whole, \$27,687,000.

Grants Pass sales in 1958 for 215 establishments totalled \$27,741,000 an increase of 5.3 per cent over 1954. Klamath Falls' 334 establishments had a total of \$51,477,000, an increase of 15.8 per cent during the period.

Sales by retail trade establishments in Oregon during 1958 totalled \$2.1 billion, an increase of \$167 million or 9 per cent since the 1954 census.

Retail Establishments
Oregon retail sales last year failed to match national growth in the continental U.S., which reported a 17 per cent increase during the period. Many Oregon cities show a decline in sales from 1954 to 1958, which reflects in part the recession last year in lumber areas, according to Harold K. Cherry, manager of the Portland field office of the department of commerce.

Retail trade establishments in the state had a total of 76,654 paid employees during the work week ended nearest Nov. 15, 1958, a 10 per cent increase over that week in 1954. A total of 19,333 active proprietors and partners were engaged in operation of the establishments.

The annual payroll amount to \$228.6 million compared to \$204.7 million in 1954, an increase of 12 per cent.

Copies of the preliminary census of business, 1958 report on retail trade for Oregon are available from the Portland field office, 520 S.W. Morrison St., Portland 4, at 15 cents each.

LOWER STANDARDS
Washington—UPI—The Coast Guard says it no longer requires perfect vision for applicants to the Coast Guard Academy in New London, Conn. A standard of 20-20 vision in each eye, uncorrected, was changed to 20-30 vision in each eye, correctable with glasses to 20-20.

***Restful hobby for busy people**



Organ music is the most relaxing of all music, psychologists maintain. And now, busy professional people who have never played music before are amazed to find they can enjoy themselves at the Hammond Chord Organ. You can start right in playing, without lessons or tedious practice.



You can play a tune in 30 minutes on the Hammond Chord Organ

One finger plays the melody. One finger adds rich, full chords.
If you don't read notes, you use Picture Music that anyone can follow. In a few weeks, you'll be playing all sorts of selections—popular, religious, even classical!

\$995.00
Bench Extra
\$95.00 down—\$30.25 mo.

The Hammond Chord Organ
by the makers of Hammond Organs

PURUCKER
MUSIC HOUSE

Your Wurlitzer Piano Dealer
111 No. Central • Ph. SP 2-5702



"A GREAT STORE IN A GREAT COUNTRY"



TAKE FLIGHT DARLING! IN DOUBLE PLAY

by warner's®

Criss-Cross Bands
Put the ~~XXX~~ on Tummy Bulge.



lucky you! you'll love the new criss-cross slimming of this waist-whittling girdle with sta-up-top® . . . power net and satin elastic. try on a double play this week and see the difference!

Pink Pearl, Blue Pearl, Beige, Black.
Sizes S, M, L

8.95

a'lure® elastic bra-colors to match . . . 3.95
32 A to 40 C.

KNIT THIS HANDSOME TWEED JACKET

for the smart casual look . . . Bear Brand's fine imported mohair and wool yarns . . . in sizes 10-16.

Complete Kit Only **9.98**

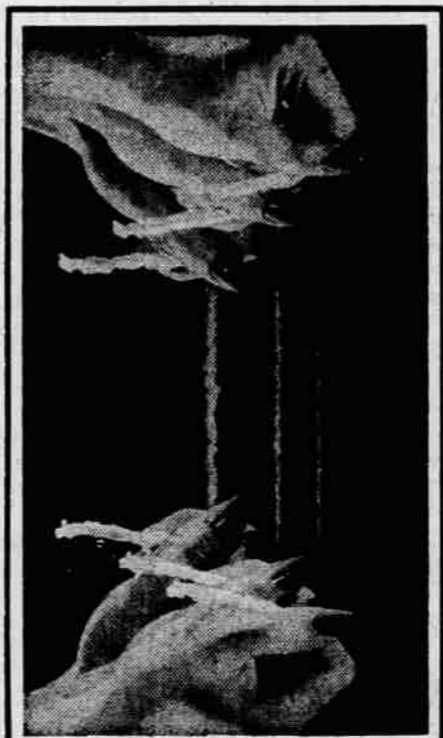
NATIONAL KNIT IT YOURSELF WEEK!



AMAZING NEW WOOL KNITTING YARN

new VITA-SPUN by Bear Brand . . . pull it—it springs back because it has "vita-spring" . . . knits twice as fast . . . adjusts to size . . . needs no blocking—wash it, wear it!

Per Skein **79¢**



OPENING OCTOBER 20TH, FREE KNITTING CLASS EVERY TUESDAY AFTERNOON 1:00 TO 5:00 P.M. ART NEEDLEWORK DEPARTMENT, Mary Kercher, instructor.



THE FASHION COAT ALL NEW SHAPES

imported alpaca, imported camel hair, large plaids, tweeds . . . keynote elegance any place, any time at a fabulous price . . . milium lined of course!

Sizes 6-16 **49⁹⁵**

buy on one of Mann's liberal credit plans . . . women's coats, second floor.



FASHION FINDS BY FOREVER YOUNG

this acetate magicrepe classic coat dress knows its way around the best fashion circles . . . brought to you in a revival of museum primitive prints . . . in regular and half sizes.

10.98

this brushed nylon fashion find with a velour feeling gets lovelier with each wearing and washing . . . a drip-dry no-iron beauty entitled "smoothie" in half sizes.

14.98

ready-to-wear, second floor

Shop all day Monday . . . 9:30 A.M. to 9:00 P.M.!