

Local and Personal

Bicycle—Martha Louise Sellers, 601 Childers st., told city police that her son's bicycle was taken Tuesday from Roosevelt school.

Phone Damaged—Medford police reported a pay telephone at East Main and Hawthorne sts. was damaged early this morning. The telephone receiver was torn off, police said.

Lyn-Co Enterprises—John M. Lynn and William F. Cowning have assumed the business name Lyn-Co Enterprises at 103 South Holly st., Medford, Jackson county records show.

Theft—Arne Seeland Matson, 208 Beatty st., told city police Tuesday that four hubcaps were taken from his vehicle while it was parked at his residence. They were valued at \$12.88.

Assume Name—Clifford A. Osborne and William P. Snavely, at 503 Albert st., Medford, have assumed the business name of Osborne and Snavely Logging, according to records at the Jackson County courthouse.

Club Meeting—The Fifty Plus club will meet at noon for a potluck luncheon and meeting at St. Mark's Guild hall, Fifth st. and Oakdale ave. Friday, Oct. 2. Visitors are welcome, club officials said.

Name Assumed—The business name Thomas J. Parker and Associates has been assumed by Thomas J. Parker, Elton R. Daly, Daniel G. Moon and Elmer F. South at 450 Siskiyou blvd., Ashland, Jackson county courthouse records show.

Driver Cited—James Howard Nunes, 169 Glenwood rd., Medford, was cited for following too close after an accident at Third st. and Central ave. Wednesday, Medford police said. A car driven by Alexander Snyder, 74, of Seattle, Wash., and Nunes' vehicle were involved in a rear-end accident, police said. Snyder was injured slightly.

Patient—Mrs. Tyley Evans of Central Point is a surgery patient at Good Samaritan hospital in Portland, friends here have reported.

Patient—Frank Shaw, manager of the Jackson County Cooperative, is a medical patient at Sacred Heart hospital.

Lost—Elva L. Bowen, box 15, Butte Falls, notified sheriff's deputies Wednesday of the loss of a tool box containing tools, tire and rim.

Bicycle Stolen—Lane Dale Fornerook, 1833 Stratford way, Medford, Wednesday afternoon told Medford police that his bicycle was taken from the Roosevelt school, 132 Lindsey ave., Medford.

Clinic Open—The chest x-ray clinic at Sacred Heart hospital will be open until 5 o'clock this afternoon, according to the Jackson County Tuberculosis and Health association, which sponsors the clinic.

Tire Wheel Taken—Walter W. Kenworthy, busy beaver motel, Shady Cove, informed the Jackson county sheriff's office Tuesday of the theft of a tire and wheel from a compressor parked at a construction site two miles south of Shady Cove on River rd.

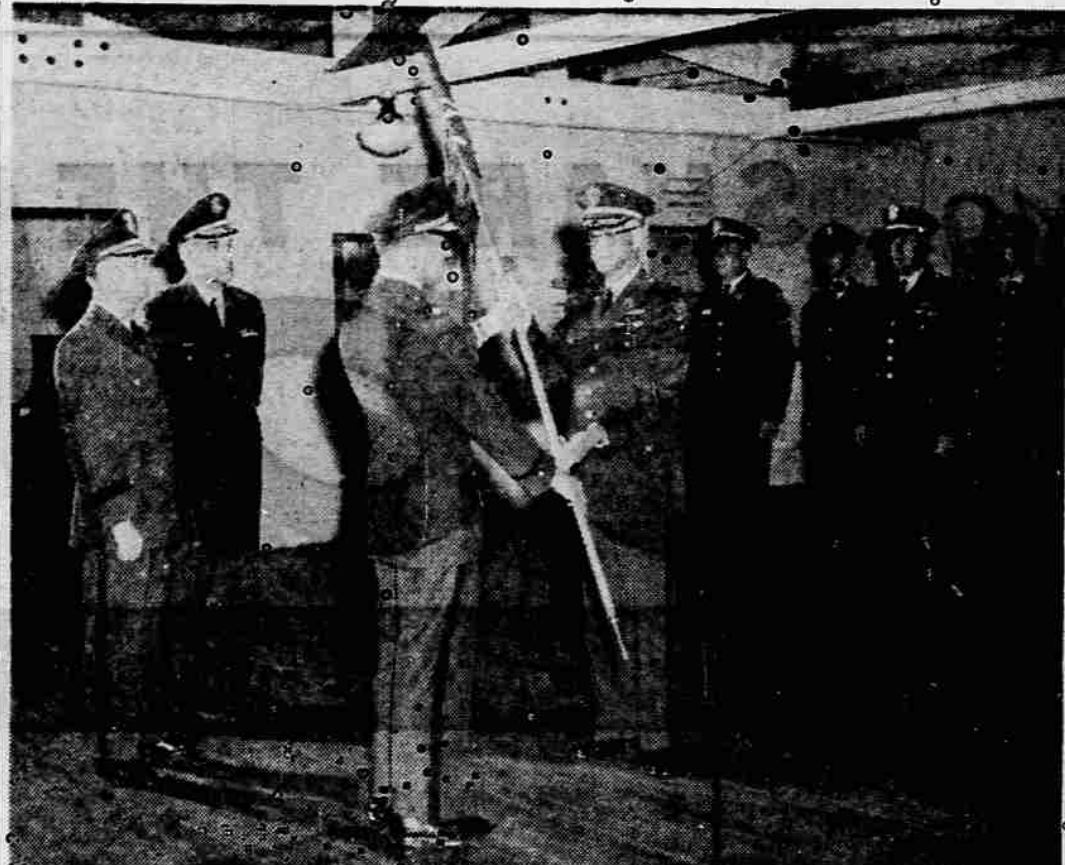
Two-Car Collision—A car driven by Norval Taylor, Medford, and Paul Graham, 1537 Grand ave., Medford, collided on West Second st. between Western and Columbus aves. this morning, police said. No citations were issued.

Burglary Reported—Jackson county sheriff's deputies investigated Tuesday a reported burglary Monday night at R and M Hardware store in Rogue River. The main part of the store was not entered and nothing appeared to have been stolen, according to the report.

Council to Meet—The Northwestern Mining Council will meet at 8 o'clock tonight in the Jackson County courthouse auditorium. Dr. Frank Haines of Southern Oregon college will speak on the "Gold Rush Days of Jackson County." The meeting is open to the public.

Roof Damaged—A 12 by 12-foot area of the roof at the home of Mrs. Marie Proehl, 303 Boardman ave., was damaged by fire about 5 p.m. yesterday, city firemen reported. They said that sparks from the chimney apparently fell on the moss-covered roof. Sparks from an incinerator at the Medford airport and blown by high wind resulted in a one-acre grass fire about 2 1/2 p.m. yesterday.

Grass Fire—Central Point rural firemen were summoned about 10:05 a.m. today to put out a six to seven-acre grass fire on Randle lane. They and patrolmen of the state department of forestry were called about 4:45 p.m. yesterday to extinguish a fire in grass and brush on Table Rock estates. The blaze covered about two acres. Earlier yesterday afternoon rural firemen put out a blaze in a wood pile in Whipple wood-yard in the Camp White area.



PRESENTS GIVEN—Lt. Col. Thomas P. Bays, executive officer of the 14th Basic Combat Training Regiment, 24th Training Division, presents the guidon of the second battalion to Lt. Col. Robert S. Elliott, commanding officer of the battalion at ceremony this week at the Army Supply Center here. Observing at left are Brig. Gen. E. G. Cushing, commanding general of the 104th, and Brig. Gen. William M. Frantice. The presentation was made during activation ceremonies at the reserve unit office, 33 North Riverside ave., Medford. (Associated Photo)

Weather
Medford and vicinity: Continued fair through Friday. High tonight 53; low 35. Friday: Partly cloudy with increasing clouds. High 54; low 38. Saturday: Partly cloudy with increasing clouds. High 55; low 39. Sunday: Partly cloudy with increasing clouds. High 56; low 40. Monday: Partly cloudy with increasing clouds. High 57; low 41. Tuesday: Partly cloudy with increasing clouds. High 58; low 42. Wednesday: Partly cloudy with increasing clouds. High 59; low 43. Thursday: Partly cloudy with increasing clouds. High 60; low 44. Friday: Partly cloudy with increasing clouds. High 61; low 45. Saturday: Partly cloudy with increasing clouds. High 62; low 46. Sunday: Partly cloudy with increasing clouds. High 63; low 47. Monday: Partly cloudy with increasing clouds. High 64; low 48. Tuesday: Partly cloudy with increasing clouds. High 65; low 49. Wednesday: Partly cloudy with increasing clouds. High 66; low 50. Thursday: Partly cloudy with increasing clouds. High 67; low 51. Friday: Partly cloudy with increasing clouds. High 68; low 52. Saturday: Partly cloudy with increasing clouds. High 69; low 53. Sunday: Partly cloudy with increasing clouds. High 70; low 54. Monday: Partly cloudy with increasing clouds. High 71; low 55. Tuesday: Partly cloudy with increasing clouds. High 72; low 56. Wednesday: Partly cloudy with increasing clouds. High 73; low 57. Thursday: Partly cloudy with increasing clouds. High 74; low 58. Friday: Partly cloudy with increasing clouds. High 75; low 59. Saturday: Partly cloudy with increasing clouds. High 76; low 60. Sunday: Partly cloudy with increasing clouds. High 77; low 61. Monday: Partly cloudy with increasing clouds. High 78; low 62. Tuesday: Partly cloudy with increasing clouds. High 79; low 63. Wednesday: Partly cloudy with increasing clouds. High 80; low 64. Thursday: Partly cloudy with increasing clouds. High 81; low 65. Friday: Partly cloudy with increasing clouds. High 82; low 66. Saturday: Partly cloudy with increasing clouds. High 83; low 67. Sunday: Partly cloudy with increasing clouds. High 84; low 68. Monday: Partly cloudy with increasing clouds. High 85; low 69. Tuesday: Partly cloudy with increasing clouds. High 86; low 70. Wednesday: Partly cloudy with increasing clouds. High 87; low 71. Thursday: Partly cloudy with increasing clouds. High 88; low 72. Friday: Partly cloudy with increasing clouds. High 89; low 73. Saturday: Partly cloudy with increasing clouds. High 90; low 74. Sunday: Partly cloudy with increasing clouds. High 91; low 75. Monday: Partly cloudy with increasing clouds. High 92; low 76. Tuesday: Partly cloudy with increasing clouds. High 93; low 77. Wednesday: Partly cloudy with increasing clouds. High 94; low 78. Thursday: Partly cloudy with increasing clouds. High 95; low 79. Friday: Partly cloudy with increasing clouds. High 96; low 80. Saturday: Partly cloudy with increasing clouds. High 97; low 81. Sunday: Partly cloudy with increasing clouds. High 98; low 82. Monday: Partly cloudy with increasing clouds. High 99; low 83. Tuesday: Partly cloudy with increasing clouds. High 100; low 84. Wednesday: Partly cloudy with increasing clouds. High 101; low 85. Thursday: Partly cloudy with increasing clouds. High 102; low 86. Friday: Partly cloudy with increasing clouds. High 103; low 87. Saturday: Partly cloudy with increasing clouds. High 104; low 88. Sunday: Partly cloudy with increasing clouds. High 105; low 89. Monday: Partly cloudy with increasing clouds. High 106; low 90. Tuesday: Partly cloudy with increasing clouds. High 107; low 91. Wednesday: Partly cloudy with increasing clouds. High 108; low 92. Thursday: Partly cloudy with increasing clouds. High 109; low 93. Friday: Partly cloudy with increasing clouds. High 110; low 94. Saturday: Partly cloudy with increasing clouds. High 111; low 95. Sunday: Partly cloudy with increasing clouds. High 112; low 96. Monday: Partly cloudy with increasing clouds. High 113; low 97. Tuesday: Partly cloudy with increasing clouds. High 114; low 98. Wednesday: Partly cloudy with increasing clouds. High 115; low 99. Thursday: Partly cloudy with increasing clouds. High 116; low 100. Friday: Partly cloudy with increasing clouds. High 117; low 101. Saturday: Partly cloudy with increasing clouds. High 118; low 102. Sunday: Partly cloudy with increasing clouds. High 119; low 103. Monday: Partly cloudy with increasing clouds. High 120; low 104. Tuesday: Partly cloudy with increasing clouds. High 121; low 105. Wednesday: Partly cloudy with increasing clouds. High 122; low 106. Thursday: Partly cloudy with increasing clouds. High 123; low 107. Friday: Partly cloudy with increasing clouds. High 124; low 108. Saturday: Partly cloudy with increasing clouds. High 125; low 109. Sunday: Partly cloudy with increasing clouds. High 126; low 110. Monday: Partly cloudy with increasing clouds. High 127; low 111. Tuesday: Partly cloudy with increasing clouds. High 128; low 112. Wednesday: Partly cloudy with increasing clouds. High 129; low 113. Thursday: Partly cloudy with increasing clouds. High 130; low 114. Friday: Partly cloudy with increasing clouds. High 131; low 115. Saturday: Partly cloudy with increasing clouds. High 132; low 116. Sunday: Partly cloudy with increasing clouds. High 133; low 117. Monday: Partly cloudy with increasing clouds. High 134; low 118. Tuesday: Partly cloudy with increasing clouds. High 135; low 119. Wednesday: Partly cloudy with increasing clouds. High 136; low 120. Thursday: Partly cloudy with increasing clouds. High 137; low 121. Friday: Partly cloudy with increasing clouds. High 138; low 122. Saturday: Partly cloudy with increasing clouds. High 139; low 123. Sunday: Partly cloudy with increasing clouds. High 140; low 124. Monday: Partly cloudy with increasing clouds. High 141; low 125. Tuesday: Partly cloudy with increasing clouds. High 142; low 126. Wednesday: Partly cloudy with increasing clouds. High 143; low 127. Thursday: Partly cloudy with increasing clouds. High 144; low 128. Friday: Partly cloudy with increasing clouds. High 145; low 129. Saturday: Partly cloudy with increasing clouds. High 146; low 130. Sunday: Partly cloudy with increasing clouds. High 147; low 131. Monday: Partly cloudy with increasing clouds. High 148; low 132. Tuesday: Partly cloudy with increasing clouds. High 149; low 133. Wednesday: Partly cloudy with increasing clouds. High 150; low 134. Thursday: Partly cloudy with increasing clouds. High 151; low 135. Friday: Partly cloudy with increasing clouds. High 152; low 136. Saturday: Partly cloudy with increasing clouds. High 153; low 137. Sunday: Partly cloudy with increasing clouds. High 154; low 138. Monday: Partly cloudy with increasing clouds. High 155; low 139. Tuesday: Partly cloudy with increasing clouds. High 156; low 140. Wednesday: Partly cloudy with increasing clouds. High 157; low 141. Thursday: Partly cloudy with increasing clouds. High 158; low 142. Friday: Partly cloudy with increasing clouds. High 159; low 143. Saturday: Partly cloudy with increasing clouds. High 160; low 144. Sunday: Partly cloudy with increasing clouds. High 161; low 145. Monday: Partly cloudy with increasing clouds. High 162; low 146. Tuesday: Partly cloudy with increasing clouds. High 163; low 147. Wednesday: Partly cloudy with increasing clouds. High 164; low 148. Thursday: Partly cloudy with increasing clouds. High 165; low 149. Friday: Partly cloudy with increasing clouds. High 166; low 150. Saturday: Partly cloudy with increasing clouds. High 167; low 151. Sunday: Partly cloudy with increasing clouds. High 168; low 152. Monday: Partly cloudy with increasing clouds. High 169; low 153. Tuesday: Partly cloudy with increasing clouds. High 170; low 154. Wednesday: Partly cloudy with increasing clouds. High 171; low 155. Thursday: Partly cloudy with increasing clouds. High 172; low 156. Friday: Partly cloudy with increasing clouds. High 173; low 157. Saturday: Partly cloudy with increasing clouds. High 174; low 158. Sunday: Partly cloudy with increasing clouds. High 175; low 159. Monday: Partly cloudy with increasing clouds. High 176; low 160. Tuesday: Partly cloudy with increasing clouds. High 177; low 161. Wednesday: Partly cloudy with increasing clouds. High 178; low 162. Thursday: Partly cloudy with increasing clouds. High 179; low 163. Friday: Partly cloudy with increasing clouds. High 180; low 164. Saturday: Partly cloudy with increasing clouds. High 181; low 165. Sunday: Partly cloudy with increasing clouds. High 182; low 166. Monday: Partly cloudy with increasing clouds. High 183; low 167. Tuesday: Partly cloudy with increasing clouds. High 184; low 168. Wednesday: Partly cloudy with increasing clouds. High 185; low 169. Thursday: Partly cloudy with increasing clouds. High 186; low 170. Friday: Partly cloudy with increasing clouds. High 187; low 171. Saturday: Partly cloudy with increasing clouds. High 188; low 172. Sunday: Partly cloudy with increasing clouds. High 189; low 173. Monday: Partly cloudy with increasing clouds. High 190; low 174. Tuesday: Partly cloudy with increasing clouds. High 191; low 175. Wednesday: Partly cloudy with increasing clouds. High 192; low 176. Thursday: Partly cloudy with increasing clouds. High 193; low 177. Friday: Partly cloudy with increasing clouds. High 194; low 178. Saturday: Partly cloudy with increasing clouds. High 195; low 179. Sunday: Partly cloudy with increasing clouds. High 196; low 180. Monday: Partly cloudy with increasing clouds. High 197; low 181. Tuesday: Partly cloudy with increasing clouds. High 198; low 182. Wednesday: Partly cloudy with increasing clouds. High 199; low 183. Thursday: Partly cloudy with increasing clouds. High 200; low 184. Friday: Partly cloudy with increasing clouds. High 201; low 185. Saturday: Partly cloudy with increasing clouds. High 202; low 186. Sunday: Partly cloudy with increasing clouds. High 203; low 187. Monday: Partly cloudy with increasing clouds. High 204; low 188. Tuesday: Partly cloudy with increasing clouds. High 205; low 189. Wednesday: Partly cloudy with increasing clouds. High 206; low 190. Thursday: Partly cloudy with increasing clouds. High 207; low 191. Friday: Partly cloudy with increasing clouds. High 208; low 192. Saturday: Partly cloudy with increasing clouds. High 209; low 193. Sunday: Partly cloudy with increasing clouds. High 210; low 194. Monday: Partly cloudy with increasing clouds. High 211; low 195. Tuesday: Partly cloudy with increasing clouds. High 212; low 196. Wednesday: Partly cloudy with increasing clouds. High 213; low 197. Thursday: Partly cloudy with increasing clouds. High 214; low 198. Friday: Partly cloudy with increasing clouds. High 215; low 199. Saturday: Partly cloudy with increasing clouds. High 216; low 200. Sunday: Partly cloudy with increasing clouds. High 217; low 201. Monday: Partly cloudy with increasing clouds. High 218; low 202. Tuesday: Partly cloudy with increasing clouds. High 219; low 203. Wednesday: Partly cloudy with increasing clouds. High 220; low 204. Thursday: Partly cloudy with increasing clouds. High 221; low 205. Friday: Partly cloudy with increasing clouds. High 222; low 206. Saturday: Partly cloudy with increasing clouds. High 223; low 207. Sunday: Partly cloudy with increasing clouds. High 224; low 208. Monday: Partly cloudy with increasing clouds. High 225; low 209. Tuesday: Partly cloudy with increasing clouds. High 226; low 210. Wednesday: Partly cloudy with increasing clouds. High 227; low 211. Thursday: Partly cloudy with increasing clouds. High 228; low 212. Friday: Partly cloudy with increasing clouds. High 229; low 213. Saturday: Partly cloudy with increasing clouds. High 230; low 214. Sunday: Partly cloudy with increasing clouds. High 231; low 215. Monday: Partly cloudy with increasing clouds. High 232; low 216. Tuesday: Partly cloudy with increasing clouds. High 233; low 217. Wednesday: Partly cloudy with increasing clouds. High 234; low 218. Thursday: Partly cloudy with increasing clouds. High 235; low 219. Friday: Partly cloudy with increasing clouds. High 236; low 220. Saturday: Partly cloudy with increasing clouds. High 237; low 221. Sunday: Partly cloudy with increasing clouds. High 238; low 222. Monday: Partly cloudy with increasing clouds. High 239; low 223. Tuesday: Partly cloudy with increasing clouds. High 240; low 224. Wednesday: Partly cloudy with increasing clouds. High 241; low 225. Thursday: Partly cloudy with increasing clouds. High 242; low 226. Friday: Partly cloudy with increasing clouds. High 243; low 227. Saturday: Partly cloudy with increasing clouds. High 244; low 228. Sunday: Partly cloudy with increasing clouds. High 245; low 229. Monday: Partly cloudy with increasing clouds. High 246; low 230. Tuesday: Partly cloudy with increasing clouds. High 247; low 231. Wednesday: Partly cloudy with increasing clouds. High 248; low 232. Thursday: Partly cloudy with increasing clouds. High 249; low 233. Friday: Partly cloudy with increasing clouds. High 250; low 234. Saturday: Partly cloudy with increasing clouds. High 251; low 235. Sunday: Partly cloudy with increasing clouds. High 252; low 236. Monday: Partly cloudy with increasing clouds. High 253; low 237. Tuesday: Partly cloudy with increasing clouds. High 254; low 238. Wednesday: Partly cloudy with increasing clouds. High 255; low 239. Thursday: Partly cloudy with increasing clouds. High 256; low 240. Friday: Partly cloudy with increasing clouds. High 257; low 241. Saturday: Partly cloudy with increasing clouds. High 258; low 242. Sunday: Partly cloudy with increasing clouds. High 259; low 243. Monday: Partly cloudy with increasing clouds. High 260; low 244. Tuesday: Partly cloudy with increasing clouds. High 261; low 245. Wednesday: Partly cloudy with increasing clouds. High 262; low 246. Thursday: Partly cloudy with increasing clouds. High 263; low 247. Friday: Partly cloudy with increasing clouds. High 264; low 248. Saturday: Partly cloudy with increasing clouds. High 265; low 249. Sunday: Partly cloudy with increasing clouds. High 266; low 250. Monday: Partly cloudy with increasing clouds. High 267; low 251. Tuesday: Partly cloudy with increasing clouds. High 268; low 252. Wednesday: Partly cloudy with increasing clouds. High 269; low 253. Thursday: Partly cloudy with increasing clouds. High 270; low 254. Friday: Partly cloudy with increasing clouds. High 271; low 255. Saturday: Partly cloudy with increasing clouds. High 272; low 256. Sunday: Partly cloudy with increasing clouds. High 273; low 257. Monday: Partly cloudy with increasing clouds. High 274; low 258. Tuesday: Partly cloudy with increasing clouds. High 275; low 259. Wednesday: Partly cloudy with increasing clouds. High 276; low 260. Thursday: Partly cloudy with increasing clouds. High 277; low 261. Friday: Partly cloudy with increasing clouds. High 278; low 262. Saturday: Partly cloudy with increasing clouds. High 279; low 263. Sunday: Partly cloudy with increasing clouds. High 280; low 264. Monday: Partly cloudy with increasing clouds. High 281; low 265. Tuesday: Partly cloudy with increasing clouds. High 282; low 266. Wednesday: Partly cloudy with increasing clouds. High 283; low 267. Thursday: Partly cloudy with increasing clouds. High 284; low 268. Friday: Partly cloudy with increasing clouds. High 285; low 269. Saturday: Partly cloudy with increasing clouds. High 286; low 270. Sunday: Partly cloudy with increasing clouds. High 287; low 271. Monday: Partly cloudy with increasing clouds. High 288; low 272. Tuesday: Partly cloudy with increasing clouds. High 289; low 273. Wednesday: Partly cloudy with increasing clouds. High 290; low 274. Thursday: Partly cloudy with increasing clouds. High 291; low 275. Friday: Partly cloudy with increasing clouds. High 292; low 276. Saturday: Partly cloudy with increasing clouds. High 293; low 277. Sunday: Partly cloudy with increasing clouds. High 294; low 278. Monday: Partly cloudy with increasing clouds. High 295; low 279. Tuesday: Partly cloudy with increasing clouds. High 296; low 280. Wednesday: Partly cloudy with increasing clouds. High 297; low 281. Thursday: Partly cloudy with increasing clouds. High 298; low 282. Friday: Partly cloudy with increasing clouds. High 299; low 283. Saturday: Partly cloudy with increasing clouds. High 300; low 284. Sunday: Partly cloudy with increasing clouds. High 301; low 285. Monday: Partly cloudy with increasing clouds. High 302; low 286. Tuesday: Partly cloudy with increasing clouds. High 303; low 287. Wednesday: Partly cloudy with increasing clouds. High 304; low 288. Thursday: Partly cloudy with increasing clouds. High 305; low 289. Friday: Partly cloudy with increasing clouds. High 306; low 290. Saturday: Partly cloudy with increasing clouds. High 307; low 291. Sunday: Partly cloudy with increasing clouds. High 308; low 292. Monday: Partly cloudy with increasing clouds. High 309; low 293. Tuesday: Partly cloudy with increasing clouds. High 310; low 294. Wednesday: Partly cloudy with increasing clouds. High 311; low 295. Thursday: Partly cloudy with increasing clouds. High 312; low 296. Friday: Partly cloudy with increasing clouds. High 313; low 297. Saturday: Partly cloudy with increasing clouds. High 314; low 298. Sunday: Partly cloudy with increasing clouds. High 315; low 299. Monday: Partly cloudy with increasing clouds. High 316; low 300. Tuesday: Partly cloudy with increasing clouds. High 317; low 301. Wednesday: Partly cloudy with increasing clouds. High 318; low 302. Thursday: Partly cloudy with increasing clouds. High 319; low 303. Friday: Partly cloudy with increasing clouds. High 320; low 304. Saturday: Partly cloudy with increasing clouds. High 321; low 305. Sunday: Partly cloudy with increasing clouds. High 322; low 306. Monday: Partly cloudy with increasing clouds. High 323; low 307. Tuesday: Partly cloudy with increasing clouds. High 324; low 308. Wednesday: Partly cloudy with increasing clouds. High 325; low 309. Thursday: Partly cloudy with increasing clouds. High 326; low 310. Friday: Partly cloudy with increasing clouds. High 327; low 311. Saturday: Partly cloudy with increasing clouds. High 328; low 312. Sunday: Partly cloudy with increasing clouds. High 329; low 313. Monday: Partly cloudy with increasing clouds. High 330; low 314. Tuesday: Partly cloudy with increasing clouds. High 331; low 315. Wednesday: Partly cloudy with increasing clouds. High 332; low 316. Thursday: Partly cloudy with increasing clouds. High 333; low 317. Friday: Partly cloudy with increasing clouds. High 334; low 318. Saturday: Partly cloudy with increasing clouds. High 335; low 319. Sunday: Partly cloudy with increasing clouds. High 336; low 320. Monday: Partly cloudy with increasing clouds. High 337; low 321. Tuesday: Partly cloudy with increasing clouds. High 338; low 322. Wednesday: Partly cloudy with increasing clouds. High 339; low 323. Thursday: Partly cloudy with increasing clouds. High 340; low 324. Friday: Partly cloudy with increasing clouds. High 341; low 325. Saturday: Partly cloudy with increasing clouds. High 342; low 326. Sunday: Partly cloudy with increasing clouds. High 343; low 327. Monday: Partly cloudy with increasing clouds. High 344; low 328. Tuesday: Partly cloudy with increasing clouds. High 345; low 329. Wednesday: Partly cloudy with increasing clouds. High 346; low 330. Thursday: Partly cloudy with increasing clouds. High 347; low 331. Friday: Partly cloudy with increasing clouds. High 348; low 332. Saturday: Partly cloudy with increasing clouds. High 349; low 333. Sunday: Partly cloudy with increasing clouds. High 350; low 334. Monday: Partly cloudy with increasing clouds. High 351; low 335. Tuesday: Partly cloudy with increasing clouds. High 352; low 336. Wednesday: Partly cloudy with increasing clouds. High 353; low 337. Thursday: Partly cloudy with increasing clouds. High 354; low 338. Friday: Partly cloudy with increasing clouds. High 355; low 339. Saturday: Partly cloudy with increasing clouds. High 356; low 340. Sunday: Partly cloudy with increasing clouds. High 357; low 341. Monday: Partly cloudy with increasing clouds. High 358; low 342. Tuesday: Partly cloudy with increasing clouds. High 359; low 343. Wednesday: Partly cloudy with increasing clouds. High 360; low 344. Thursday: Partly cloudy with increasing clouds. High 361; low 345. Friday: Partly cloudy with increasing clouds. High 362; low 346. Saturday: Partly cloudy with increasing clouds. High 363; low 347. Sunday: Partly cloudy with increasing clouds. High 364; low 348. Monday: Partly cloudy with increasing clouds. High 365; low 349. Tuesday: Partly cloudy with increasing clouds. High 366; low 350. Wednesday: Partly cloudy with increasing clouds. High 367; low 351. Thursday: Partly cloudy with increasing clouds. High 368; low 352. Friday: Partly cloudy with increasing clouds. High 369; low 353. Saturday: Partly cloudy with increasing clouds. High 370; low 354. Sunday: Partly cloudy with increasing clouds. High 371; low 355. Monday: Partly cloudy with increasing clouds. High 372; low 356. Tuesday: Partly cloudy with increasing clouds. High 373; low 357. Wednesday: Partly cloudy with increasing clouds. High 374; low 358. Thursday: Partly cloudy with increasing clouds. High 375; low 359. Friday: Partly cloudy with increasing clouds. High 376; low 360. Saturday: Partly cloudy with increasing clouds. High 377; low 361. Sunday: Partly cloudy with increasing clouds. High 378; low 362. Monday: Partly cloudy with increasing clouds. High 379; low 363. Tuesday: Partly cloudy with increasing clouds. High 380; low 364. Wednesday: Partly cloudy with increasing clouds. High 381; low 365. Thursday: Partly cloudy with increasing clouds. High 382; low 366. Friday: Partly cloudy with increasing clouds. High 383; low 367. Saturday: Partly cloudy with increasing clouds. High 384; low 368. Sunday: Partly cloudy with increasing clouds. High 385; low 369. Monday: Partly cloudy with increasing clouds. High 386; low 370. Tuesday: Partly cloudy with increasing clouds. High 387; low 371. Wednesday: Partly cloudy with increasing clouds. High 388; low 372. Thursday: Partly cloudy with increasing clouds. High 389; low 373. Friday: Partly cloudy with increasing clouds. High 390; low 374. Saturday: Partly cloudy with increasing clouds. High 391; low 375. Sunday: Partly cloudy with increasing clouds. High 392; low 376. Monday: Partly cloudy with increasing clouds. High 393; low 377. Tuesday: Partly cloudy with increasing clouds. High 394; low 378. Wednesday: Partly cloudy with increasing clouds. High 395; low 379. Thursday: Partly cloudy with increasing clouds. High 396; low 380. Friday: Partly cloudy with increasing clouds. High 397; low 381. Saturday: Partly cloudy with increasing clouds. High 398; low 382. Sunday: Partly cloudy with increasing clouds. High 399; low 383. Monday: Partly cloudy with increasing clouds. High 400; low 384. Tuesday: Partly cloudy with increasing clouds. High 401; low 385. Wednesday: Partly cloudy with increasing clouds. High 402; low 386. Thursday: Partly cloudy with increasing clouds. High 403; low 387. Friday: Partly cloudy with increasing clouds. High 404; low 388. Saturday: Partly cloudy with increasing clouds. High 405; low 389. Sunday: Partly cloudy with increasing clouds. High 406; low 390. Monday: Partly cloudy with increasing clouds. High 407; low 391. Tuesday: Partly cloudy with increasing clouds. High 408; low 392. Wednesday: Partly cloudy with increasing clouds. High 409; low 393. Thursday: Partly cloudy with increasing clouds. High 410; low 394. Friday: Partly cloudy with increasing clouds. High 411; low 395. Saturday: Partly cloudy with increasing clouds. High 412; low 396. Sunday: Partly cloudy with increasing clouds. High 413; low 397. Monday: Partly cloudy with increasing clouds. High 414; low 398. Tuesday: Partly cloudy with increasing clouds. High 415; low 399. Wednesday: Partly cloudy with increasing clouds. High 416; low 400. Thursday: Partly cloudy with increasing clouds. High 417; low 401. Friday: Partly cloudy with increasing clouds. High 418; low 402. Saturday: Partly cloudy with increasing clouds. High 419; low 403. Sunday: Partly cloudy with increasing clouds. High 420; low 404. Monday: Partly cloudy with increasing clouds. High 421; low 405. Tuesday: Partly cloudy with increasing clouds. High 422; low 406. Wednesday: Partly cloudy with increasing clouds. High 423; low 407. Thursday: Partly cloudy with increasing clouds. High 424; low 408. Friday: Partly cloudy with increasing clouds. High 425; low 409. Saturday: Partly cloudy with increasing clouds. High 426; low 410. Sunday: Partly cloudy with increasing clouds. High 427; low 411. Monday: Partly cloudy with increasing clouds. High 428; low 412. Tuesday: Partly cloudy with increasing clouds. High 429; low 413. Wednesday: Partly cloudy with increasing clouds. High 430; low 414. Thursday: Partly cloudy with increasing clouds. High 431; low 415. Friday: Partly cloudy with increasing clouds. High 432; low 416. Saturday: Partly cloudy with increasing clouds. High 433; low 417. Sunday: Partly cloudy with increasing clouds. High 434; low 418. Monday: Partly cloudy with increasing clouds. High 435; low 419. Tuesday: Partly cloudy with increasing clouds. High 436; low 420. Wednesday: Partly cloudy with increasing clouds. High 437; low 421. Thursday: Partly cloudy with increasing clouds. High 438; low 422. Friday: Partly cloudy with increasing clouds. High 439; low 423. Saturday: Partly cloudy with increasing clouds. High 440; low 424. Sunday: Partly cloudy with increasing clouds. High 441; low 425. Monday: Partly cloudy with increasing clouds. High 442; low 426. Tuesday: Partly cloudy with increasing clouds. High 443; low 427. Wednesday: Partly cloudy with increasing clouds. High 444; low 428. Thursday: Partly cloudy with increasing clouds. High 445; low 429. Friday: Partly cloudy with increasing clouds. High 446; low 430. Saturday: Partly cloudy with increasing clouds. High 447; low 431. Sunday: Partly cloudy with increasing clouds. High 448; low 432. Monday: Partly cloudy with increasing clouds. High 449; low 433. Tuesday: Partly cloudy with increasing clouds. High 450; low 434. Wednesday: Partly cloudy with increasing clouds. High 451; low 435. Thursday: Partly cloudy with increasing clouds. High 452; low 436. Friday: Partly cloudy with increasing clouds. High 453; low 437. Saturday: Partly cloudy with increasing clouds. High 454; low 438. Sunday: Partly cloudy with increasing clouds. High 455; low 439. Monday: Partly cloudy with increasing clouds. High 456; low 440. Tuesday: Partly cloudy with increasing clouds. High 457; low 441. Wednesday: Partly cloudy with increasing clouds. High 458; low 442. Thursday: Partly cloudy with increasing clouds. High 459; low 443. Friday: Partly cloudy with increasing clouds. High 460; low 444. Saturday: Partly cloudy with increasing clouds. High 461; low 445. Sunday: Partly cloudy with increasing clouds. High 462; low 446. Monday: Partly cloudy with increasing clouds. High 463; low 447. Tuesday: Partly cloudy with increasing clouds. High 464; low 448. Wednesday: Partly cloudy with increasing clouds. High 465; low 449. Thursday: Partly cloudy with increasing clouds. High 466; low 450. Friday: Partly cloudy with increasing clouds. High 467; low 451. Saturday: Partly cloudy with increasing clouds. High 468; low 452. Sunday: Partly cloudy with increasing clouds. High 469; low 453. Monday: Partly cloudy with increasing clouds. High 470; low 454. Tuesday: Partly cloudy with increasing clouds. High 471; low 455. Wednesday: Partly cloudy with increasing clouds. High 472; low 456. Thursday: Partly cloudy with increasing clouds. High 473; low 457. Friday: Partly cloudy with increasing clouds. High 474; low 458. Saturday: Partly cloudy with increasing clouds. High 475; low 459. Sunday: Partly cloudy with increasing clouds. High 476; low 460. Monday: Partly cloudy with increasing clouds. High 477; low 461. Tuesday: Partly cloudy with increasing clouds. High 478; low 462. Wednesday: Partly cloudy with increasing clouds. High 479; low 463. Thursday: Partly cloudy with increasing clouds. High 480; low 464. Friday: Partly cloudy with increasing clouds. High 481; low 465. Saturday: Partly cloudy with increasing clouds. High 482; low 466. Sunday: Partly cloudy with increasing clouds. High 483; low 467. Monday: Partly cloudy with increasing clouds. High 484; low 468. Tuesday: Partly cloudy with increasing clouds. High 485; low 469. Wednesday: Partly cloudy with increasing clouds. High 486; low 470. Thursday: Partly cloudy with increasing clouds. High 487; low 471. Friday: Partly cloudy with increasing clouds. High 488; low 472. Saturday: Partly cloudy with increasing clouds. High 489; low 473. Sunday: Partly cloudy with increasing clouds. High 490; low 474. Monday: Partly cloudy with increasing clouds. High 491; low 475. Tuesday: Partly cloudy with increasing clouds. High 492; low 476. Wednesday: Partly cloudy with increasing clouds. High 493; low 477. Thursday: Partly cloudy with increasing clouds. High 494; low 478. Friday: Partly cloudy with increasing clouds. High 495; low 479. Saturday: Partly cloudy with increasing clouds. High 496; low 480. Sunday: Partly cloudy with increasing clouds. High 497; low 481. Monday: Partly cloudy with increasing clouds. High 498; low 482. Tuesday: Partly cloudy with increasing clouds. High 499; low 483. Wednesday: Partly cloudy with increasing clouds. High 500; low 484. Thursday: Partly cloudy with increasing clouds. High 501; low 485. Friday: Partly cloudy with increasing clouds. High 502; low 486. Saturday: Partly cloudy with increasing clouds. High 503; low 487. Sunday: Partly cloudy with increasing clouds. High 504; low 488. Monday: Partly cloudy with increasing clouds. High 505; low 489. Tuesday: Partly cloudy with increasing clouds. High 506; low 490. Wednesday: Partly cloudy with increasing clouds. High 507; low 491. Thursday: Partly cloudy with increasing clouds. High 508; low 492. Friday: Partly cloudy with increasing clouds. High 509; low 493. Saturday: Partly cloudy with increasing clouds. High 510; low 494. Sunday: Partly cloudy with increasing clouds. High 511; low 495. Monday: Partly cloudy with increasing clouds. High 512; low 496. Tuesday: Partly cloudy with increasing clouds. High 513; low 497. Wednesday: Partly cloudy with increasing clouds. High 514; low 498. Thursday: Partly cloudy with increasing clouds. High 515; low 499. Friday: Partly cloudy with increasing clouds. High 516; low 500. Saturday: Partly cloudy with increasing clouds. High 517; low 501. Sunday: Partly cloudy with increasing clouds. High 518; low 502. Monday: Partly cloudy with increasing clouds. High 519; low 503. Tuesday: Partly cloudy with increasing clouds. High 520; low 504. Wednesday: Partly cloudy with increasing clouds. High 521; low 505. Thursday: Partly cloudy with increasing clouds. High 522; low 506. Friday: Partly cloudy with increasing clouds. High 523; low 507. Saturday: Partly cloudy with increasing clouds. High 524; low 508. Sunday: Partly cloudy with increasing clouds. High 525; low 509. Monday: Partly cloudy with increasing clouds. High 526; low 510. Tuesday: Partly cloudy with increasing clouds. High 527; low 511. Wednesday: Partly cloudy with increasing clouds. High 528; low 512. Thursday: Partly cloudy with increasing clouds. High 529; low 513. Friday: Partly cloudy with increasing clouds. High 530; low 514. Saturday: Partly cloudy with increasing clouds. High 531; low 515. Sunday: Partly cloudy with increasing clouds. High 532; low 516. Monday: Partly cloudy with increasing clouds. High 533; low 517. Tuesday: Partly cloudy with increasing clouds. High 534; low 518. Wednesday: Partly cloudy with increasing clouds. High 535; low 519. Thursday: Partly cloudy with increasing clouds. High 536; low 520. Friday: Partly cloudy with increasing clouds. High 537; low 521. Saturday: Partly cloudy with increasing clouds. High 538; low 522. Sunday: Partly cloudy with increasing clouds. High 539; low 523. Monday: Partly cloudy with increasing clouds. High 540; low 524. Tuesday: Partly cloudy with increasing clouds. High 541; low 525. Wednesday: Partly cloudy with increasing clouds. High 542; low 526. Thursday: Partly cloudy with increasing clouds. High 543; low 527. Friday: Partly cloudy with increasing clouds. High 544; low 528. Saturday: Partly cloudy with increasing clouds. High 545; low 529. Sunday: Partly cloudy with increasing clouds. High 546; low 530. Monday: Partly cloudy with increasing clouds. High 547; low 531. Tuesday: Partly cloudy with increasing clouds. High 548; low 532. Wednesday: Partly cloudy with increasing clouds. High 549; low 533. Thursday: Partly