

Project Would Help People in Service

Jackson county men and women in the armed forces will not have to "vote in the dark" next year, according to Mrs. Thomas Rutter, voters service chairman of the Medford League of Women Voters.

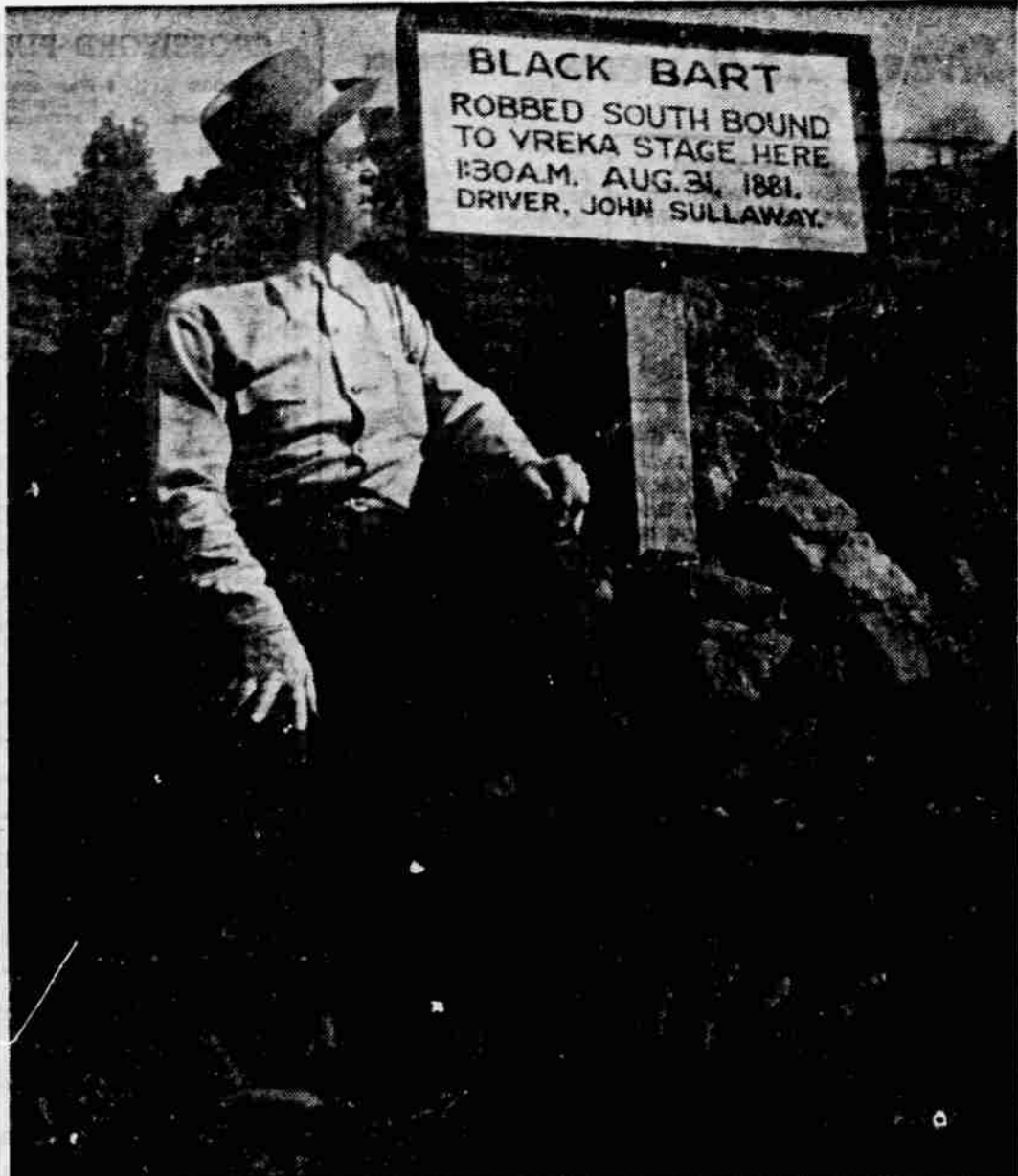
In cooperation with the National League and the department of defense, the Medford League is undertaking a project to help service men and women in casting an informed absentee ballot in the 1960 primary and general elections. Local and state leagues will make available, upon request, nonpartisan information on candidates and ballot issues. Families and friends may ask to have league material sent to men and women in the service, and service people may write directly to local leagues for ballot information.

Addresses of state leagues will be placed on bulletin boards at military establishments, Mrs. Rutter explained. Through the department of defense, the project has been announced to over 1,300 service newspapers. In 1958 there were 26,600 Oregonians in the armed forces, she added. About 35 per cent of service people cast an absentee ballot.

MICKEY MUST PAY

Los Angeles—A judge Wednesday ordered Mickey Cohen to pay \$4,000 damages to a waiter he attacked last year in a Hollywood nightclub. Superior Court Judge Joseph I. Call set the amount after a long hearing of a \$50,000 civil damage suit filed by Arthur Black, 30.

Teachers in 35 of the states participate in state controlled pension plans.



BLACK BART SIGN—This sign, erection of which was through the efforts of Gordon Jacobs, marks the site near Hornbrook where Black Bart, famous bandit of 1880s, robbed the stagecoach to Yreka.

Gordon Jacobs, Groceryman for More Than 50 Years, to Retire

By KATHERINE CHAPMAN
Hornbrook—Come Sept. 1, a career in the grocery business spanning well over half a century will end when

Gordon Jacobs hands over the keys of his store to the new owner, Dan Haight, of Little Shasta.

One of 10 children of pioneer parents, Jehu and Tabitha Jacobs, he was born in Hornbrook June 30, 1878, in a house on the lot where the L. C. Walsh home now stands. The walnut trees in the Walshes front yard, a landmark in the community, were planted by his parents about 75 years ago.

Jacobs' first job was as a flour miller with the Mt. Shasta Milling company in Little Shasta. The mill there burned down, and the company moved to Montague, where it still operates. Jacobs continued to work for the company a while longer. He left there, and ran a mill in San Diego county, and after that, was with the J. E. Niles Flour mill in Modoc county.

Returns to Hornbrook
At the turn of the century he returned to Hornbrook and went to work for Tom Jones delivering groceries in a one-horse delivery wagon, and twice a week taking the team and buckboard down the Klamath river, and to the Jillson and Mattern gold mines up Rocky Gulch.

In 1904, the T. Jones company was incorporated, and Jacobs became its manager in 1905, a position he held until 1930, when he bought out D. C. Earhart's hardware store, and added a grocery line.

Needs of Neighbors
From the spring of 1933 to the fall of 1952, Jacobs served five full terms as a member of the Siskiyou county board of supervisors, and for eight years was chairman of the board. For three of his five terms, he was reelected to the board without an opponent against him.

Always in tune with the needs of his neighbors, Jacobs was instrumental in bringing about many improvements in the county particularly in the area of road maintenance. Among his accomplishments along this line, was the realigning and straightening of the Hornbrook - Montague road.

Another of his achievements has been a member of the board of the Henley-Hornbrook cemetery association. To a great extent through his efforts, the historic old cemetery, once weeded and overgrown with tangled brush, has been converted from the eyesore it was to one of the most beautiful small cemeteries in this part of the county.

An intensely interested student of California history, Jacobs as a member of the Siskiyou County Historical society, had erected in the cemetery several years ago a granite marker engraved with a carving of a covered

wagon and six-horse team, and "Dedicated to Those Pioneers Killed by the Indians in the Winter 1853-54."

Erects Sign
He also made and erected a sign marking the spot where the famous early-day bandit, Black Bart, robbed the stage to Yreka on Aug. 31, 1881. The sign is on the old Anderson grade road through the Shasta canyon to Yreka, at Jail Gulch. The gulch was so named because it was at that point that the jail stood at the time the convict crew was building the Anderson grade road.

A 32nd degree Mason, he regards as a highlight of his life the presentation in 1955 of his 50 year membership pin by Howard lodge No. 37 in Yreka.

Jacobs plans the construction of a small office building adjacent to the store, where he will continue his insurance business in which he has been for more than 50 years.

Bank Debits Show Increase in Area

Eugene - July bank debits for the Jackson, Curry and Josephine county area totaled \$95,776,637, which was 19.6 per cent above the figure for the same period last year.

Bank debits, which are regarded as good indicators of current business activity, are collected each month by the bureau of business research here. They represent the dollar value of checks drawn against the deposit accounts of individuals and business firms.

For the state as a whole, total July debits were \$2,078,390,456, an increase of 15 per cent over the same month last year.

Committee Plans Meeting in City

Members of the Oregon Oil Information committee, which is composed of representatives from all major oil companies marketing in the northwest, will meet with the Medford committee at the Rogue Valley Country club to discuss plans for the celebration of the oil industry's centennial year.

The state committee representatives will be headed by E. B. Connell, a member of the state executive board.

The oil industry plans to mark its hundredth year with a month long celebration in October.

Prince Edward Island national park has four main beaches.

Allstate Office Open at Sears

Allstate Insurance company's sales-service operations in the Medford area are headquartered in the new Sears' Roebuck and company store at 301 East Jackson st., according to Regional Manager Charles E. Colbert.

Colbert, who heads Allstate's regional office for Oregon and Idaho, noted that the location of the old office on South Central ave. was established about four years ago with Soug Hinesly as agent. Two more agents were added since it opened. They are John Frantz and Bernie Sears.

Allstate, a Sears wholly-owned subsidiary, has more than 5 million policies in force and is now the country's largest capital stock insurer, Colbert said.

Beginning as an automobile insurance company in 1931, it has added residential fire insurance, theft, and personal liability. It entered the life insurance field in 1947 and recently added accident and sickness insurance and all-risk coverages on boats and boating equipment, Colbert noted.

One-half the lace produced in the U. S. comes from Rhode Island.

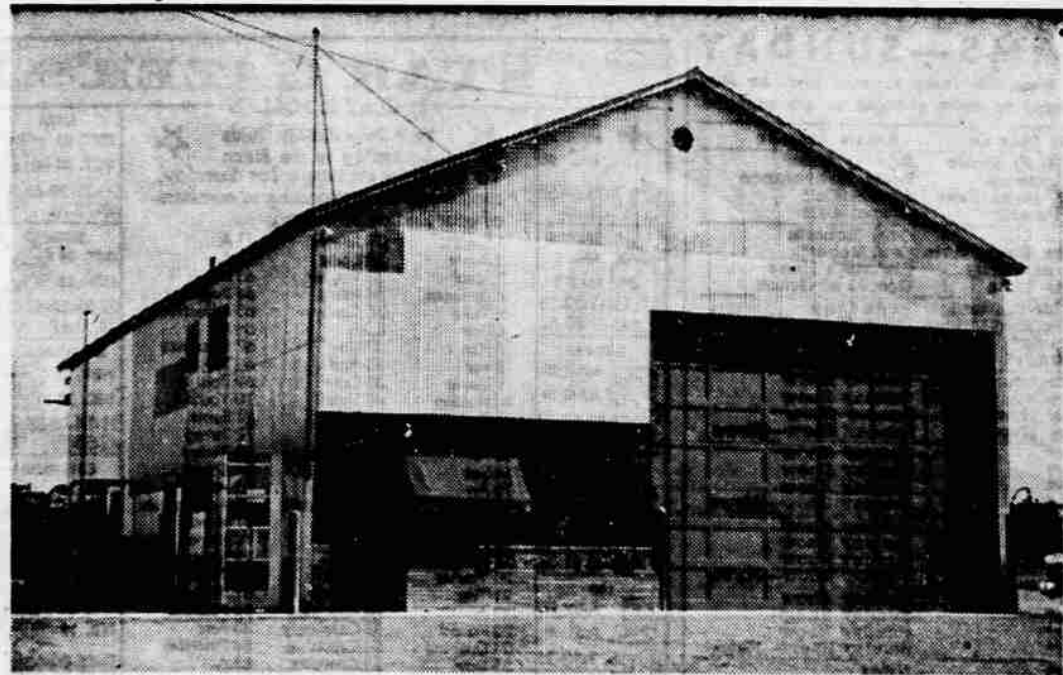
Kitchen Show-Offs



Turn a set of plain towels into gay show-offs with colorful, easy-to-embroider motifs. Appetite-teasing treats for towels or dinette cloth—smart gifts for bride or hostess. Pattern 7449; transfer 6 motifs 6x8 inches; color schemes.

Send Thirty-five cents (coins) for this pattern—add 5 cents for each pattern for 1st-class mailing. Send to Medford Mail Tribune, Household Arts Dept., P. O. Box 168, Old Chelsea Station, New York 11, N.Y. Print plainly NAME, ADDRESS, PATTERN NUMBER.

Our 1959 ALICE BROOKS Needlecraft Catalogue has many lovely designs to order: crocheting, knitting, embroidery, quilts, dolls, weaving. A special gift, in the catalog to keep a child happily occupied—a cutout doll and clothes to color. Send 25 cents for your copy of the book.



NEW BUILDING - Mitchell Brothers Truck Lines, Medford, recently moved their operations to this new building at 2790 Crater Lake highway, which will afford them much greater space than their former location at 1017 North Central ave., according to Resident Manager Ellis Chartier. The new building houses shop facilities, drivers' quarters and air conditioned offices. Truck scales that are accurate to the pound were installed by the firm to insure more efficient operation. Chartier said. Improved teletype service has been added by the trucking company, which also has offices in Portland, Seattle, Crescent City, Redding and San Francisco.

quarters and air conditioned offices. Truck scales that are accurate to the pound were installed by the firm to insure more efficient operation. Chartier said. Improved teletype service has been added by the trucking company, which also has offices in Portland, Seattle, Crescent City, Redding and San Francisco.

Training of Foremen, Fire Crews Pays Off, Agencies Say

The training of fire foremen and other fire crews by the mill and logging operators paid big dividends on the Ashland fire, according to state and federal agencies who reported to the timber committee of the Southern Oregon Conservation and Tree Farm association recently.

Carroll Brown, supervisor of Rogue River National forest, commented on the complete cooperation between state, federal and private crews in effecting control of the blaze which for a time threatened the city of Ashland.

Brown noted that his organization would stage a critique of the fire later this week in order to iron out any operational problems which may have occurred.

He said that federal crews were presently cruising the timber in the burned area prior to making the timber available for salvage sales. At the same time, a soil survey is being conducted in order to work out details of the type of ground cover or seeding needed to protect the burned over area against erosion.

Notes Problems
Curtis Nesheim, southwest Oregon district warden Oregon state department of forestry, in a brief report to the committee noted some of the problems involved in combating the Ashland fire, which assumed proportions in bringing fire overhead to the blaze in order to arrive fresh and ready to assume command.

In reviewing the situation during the fire, Nesheim brought out the fact that radio contact between fire overhead and crews was a prime factor in any fire, and additional work on radio gear would be accomplished in order to effect better communications on future fires.

Nesheim reported that a critique of the operation by the state agencies involved following the fire has aided their organization in ironing out some of the operational difficulties which occurred in the early stages of the fire fighting.

Staggering Arrivals
Doyle Stockton, state fire

patrol, who served as fire boss in the early stages of the fire, noted that a system of staggering the arrival of fire crews on the scene at half hour intervals would facilitate processing and placing them on the fire line faster.

Stockton stated that the fire crowned the evening of the first day, and due to the size and speed of the blaze, control was extremely difficult. He cited the fact that, at one point, the fire traveled three quarters of a mile in sixty seconds.

Dale Prentice, manager of the Tree Farm association, pointed out that members of the local lumber industry stand ready to back up the public agencies with thousands of dollars worth of fire fighting equipment.

Equipment Available
He reported that present equipment available for instant use includes: more than 200 crawler tractors each representing about \$45,000 investment, some 70 water tank trucks, 160 portable pumps and enough hand fire tools to equip nearly a thousand men.

Coupled with the mobile radio equipment and the base stations of the Roxy and Sexton radio networks, it presents a tremendous investment for fire control in the forested areas of southern Oregon, he noted.

A question and answer session followed the formal presentation of reports by state and federal agencies to the timber committee. This prompted numerous suggestions and recommendations from both private industries and state and federal agencies for bettering communications during the fire operations.

The private industry radio networks came in for praise by both public agencies. Better identification signs for roads, trails and equipment was pointed out as another method of insuring faster and more accurate reporting of operations, and facilitate the movement of trained, fresh crews to the right spot at the right time.

The orientation of fire foremen and crews immediately upon their arrival at the fire camp was pointed out

Eight Influenza Cases Reported

Eight cases of influenza were reported to the Jackson county health department last week, Dr. C. I. Drummond, public health physician, reported. Three cases were reported in Central Point and Shady Cove and two in Jacksonville.

Medford reported two cases of German measles, three cases of tuberculosis, and one each of measles, strep throat, and gonorrhea.

Ashland reported two cases of measles and one each of chicken pox and trench mouth and Central Point reported one case of chicken pox. Of the 23 cases of communicable diseases reported Camp White and Phoenix each reported one case of measles.

as another necessity both from the standpoint of morale and more effective use of the fire crews following their assignment. This point brought out the need for faster service on reproduction of maps of the fire zone in quantities large enough for distribution to all overhead and fire foremen.

State and federal agencies reported that steps were being taken to assure a fast supply of maps in sufficient quantity on all fires of a project size.

Dick Swan, Ross Lumber company, chairman of the timber committee, complimented state and federal agencies for their efficient work in controlling the Ashland fire and pointed to the need for a continuing exchange of ideas between public agencies and private industry for more complete cooperation among the groups involved.

Open Monday Until 9 star performers



White Stag
"616" TEENWEAR

High notes for Fall: a classic straight skirt of fine worsted wool tweed, nickel-buckled and self-fabric full belt—with matching weskit. 'Neath it, she wears a deceptively smart automatic wash 'n wear pima cotton shirt, with convertible fashion collar.

Colors galore. Sized, and priced especially for the "616" teen-er.

"Ballantree" Skirt Sizes 6-16. \$9.98
"Glasgow" Weskit Sizes 6-16. \$5.98
"Galaxy Top" Sizes 6-16. \$3.98



Parker Woods' LEON'S
21 N. Central Ave.

You SAVE MORE
ACME HARDWARE
When You Shop OUR STORE!

Polly Flex
Flexible Plastic HOUSEWARES
VEGETABLE BIN
A roomy, sturdy, storage bin that won't break, rust, chip or corrode. Cleans easily. Fruits and vegetables are readily accessible.
STACK 'EM!
Use singly or in multiple units to meet your storage space.
specially designed feet lock units solidly
REGULAR \$6.95
SPECIAL \$4.88
2 for only \$4.98
3 for only \$7.50

VOLLRATH
stainless steel mixing bowls
REGULAR \$6.95
SPECIAL \$4.88
NEW ECONOMY
Paraline CLOTHES DRYER
CHECK THESE FEATURES
★ 30 lines
★ One pc. rope arm
★ One pc. pole
★ Self Adjusting
Compare! Compare!
ONLY \$14.88
Reg. \$19.95
COSCO
WHITE UTILITY TABLE
REGULAR \$11.95
SPECIAL \$8.88

PLENTY OF FREE PARKING!
QUALITY AT LOWEST PRICES!
Tony Manno's ACME HARDWARE CO.
SPECIALISTS IN HOMEWARES!
245 South Central at 10th • Phone SP 2-5201

... WHEREVER GOOD FOOD IS SOLD ...
Snider's
Quality DAIRY FOODS

A Tribute To . . .
Our Newsboys!
The eager-faced lad who stands on the corner in all kinds of weather selling newspapers is, in every sense of the word, an American businessman. He is a self starter. He is up bright and early and on the job late at night. Nobody backs him with capital or confidence. He supplies all of this himself . . . and banks solely on his own alertness and salesmanship. Your newsboy may deliver your newspaper to your door. If so, he is even a more astute businessman, for he not only throws his papers at countless front porches, but doubles back regularly to make collections. Yes, the newsboy is an American institution. Keep up the good work, youngster. We're all behind you!

Medford Pharmacy
101 North Central, Corner 6th • Ph. SP 2-6253
Week Days: 8:30 a.m. to 10:30 p.m.
Open Sundays & Holidays—10 a.m. to 9:30 p.m.
We Salute Our Town!

glen of michigan
spice chest corduroys
Park Shop
for the subteen
Robert Bart designs for
glen of michigan
coordinated twin-miss
sportswear with the traditional
American Look in washable
corduroy by Hockmeyer...raccoon
collared skooter coat, slim
jims, jumper, paisley print
no-iron cotton shirt, slim skirt,
bermudas (not shown)...the shirt
in red/green persian paisley—the
corduroy in nutmeg brown or
pepper red. twix miss sizes 6-14.
Parker Woods'
Leon's Tots-to-Teens
105 E. Main