

Bids to Be Awarded This Week for Work On Lake Facilities

Another milestone in the cooperative conservation venture at Howard Prairie reservoir will be reached on Thursday, Aug. 20, when bids are awarded for construction of public recreational facilities, according to J. A. Callan, construction engineer for the bureau of reclamation's Rogue project office at Camp White.

The contract calls for the construction of a concrete boat launching ramp, a boat basin, parking areas, a 27-unit overnight campground, picnic tables, fireplaces, garbage stations, and toilets. These will be located on the southwestern side of the recently completed Howard Prairie reservoir which is about 25 miles east of Ashland on the Dead Indian rd.

Waters near the source of several streams flowing into the Rogue and Klamath riv-

ers are collected in Howard Prairie reservoir and diverted by concrete channels and tunnels for agricultural use by the Talent Irrigation district in the Medford basin.

Stable Water Level

Construction of the reservoir, which will have relatively stable summertime water levels, enhances the recreational use potential of the area. Recognition of this fact by the Jackson county court resulted in an agreement between Jackson county, the bureau of reclamation, and the bureau of land management Dec. 30, 1958, which provides for administration of recreational use on the project area by the county.

The initial plans for recreational development were developed by the National Park service, as technical consultant to the bureau of reclamation. Neal Butterfield is chief of the Columbia Basin recreation survey for the National Park service, and will continue to advise the agencies concerned with the recreational use of the area. Tentative plans call for later expansion of public recreational facilities and for use of portions of the area by non-profit, quasi-public organizations as group camps.

No Summer Homes

Spokesmen for the several agencies concerned have agreed that the demand for public and quasi-public recreational opportunities precludes the use of any portion of the area for individual recreational homesites. Consequently, authority will not be granted for the private construction of summer homes or vacation cabins.

Administration of contracts for judicious harvest of timber and forage on lands within the project areas is the responsibility of Ross A. Youngblood, bureau of land management, while the Oregon Game commission is active in the management of fish and game harvests.

Youngblood said that the cooperation of the bureau of reclamation, Talent Irrigation district, National Park service, Jackson county, Oregon Game commission, and the bureau of land management in performing specialized public services at Howard Prairie is an example of good government in action, with each agency contributing its proper share toward wise use of the public's natural resources.

Prentice Participates In 'Trainfire' Course

Brig. Gen. William H. Prentice, assistant commander of the 104th Training Division, Army Reserve, recently participated in the Army's new rifle marksmanship "Trainfire" course at Ft. Ord, Calif. General Prentice and his wife, Barbara, and daughter, Christine, live at 1432 Crown ave., Medford.

Daily mileage on 32,542 rural routes in the U.S. is 1,505,926 miles, or a total of 459 million miles a year.

PENNEY'S

ALWAYS FIRST QUALITY!

DOWNTOWN . . . MEDFORD

For Your Shopping Convenience—
OPEN EVERY MONDAY
EVENING UNTIL 9:00 P.M.

BE PREPARED FOR BACK-TO-SCHOOL

Penney's smart fashions come in little sizes . . . all in famous name wash 'n wear little or no iron fabrics



3⁹⁸ Sizes 7-14

2⁹⁸ Sizes 3-6X

- Solid Cottons
- Pattern Cottons
- Beautiful Plaids

New! Bouffant and bell shaped dresses! New! Cottons in rich, deep burnished tones! New! Cottons that look like wools, tweeds! See! Famous name wash 'n wear fabrics! Little homework for mother!

USE PENNEY'S CONVENIENT LAYAWAY PLAN—
\$1.00 WILL HOLD YOUR ENTIRE WARDROBE SELECTION UNTIL BACK TO SCHOOL



FAKE LEATHER WRAP MILIUM LINED

Sizes 7-14 **10⁰⁰**

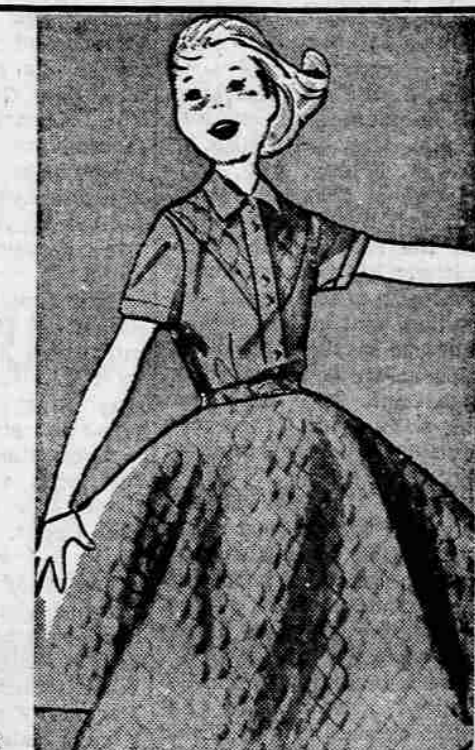
Only \$10.00 because of Special Purchase! Soft, but sturdy vinyl plastic wipes clean with damp cloth! Save on cleaning bills. Latest wrap styling! Striped lining. They'll love it! White, sand, willow green.



PERMANENTLY PLEATED REVERSIBLE SKIRT

Sizes 7-14 **3⁹⁸**

Smart plan! One skirt! Two looks! Hand washable Guilford's 65% orlon 35% wool. Reversible, permanently pleated. Beautiful plaids of red, blue, turquoise, and Penney's wonderfully low price.



Coordinated Cotton Quilts 2 PIECE SETS

Sizes 7-14 **4⁹⁸**

Super-smooth "Trinidad" quilted cotton broadcloth with mylar thread. Blouse has a quilted bib to match the full circle quilted cotton skirt. Brilliant colors. New mist green, riviera royal, university red. Blue.

Week's Sewing Buy



9408 SIZES 2-10

by Marian Martin

Sew-Very-Easy! Whip up this dashing jacket-and-bernie-cap set for girls and boys. Perfect for school and play in bright wool, cotton tweed, or denim. Make several versions now. Tomorrow's pattern: Women's dress. Printed Pattern 9408: Children's sizes 2, 4, 6, 8, 10. Size 6 jacket, cap 1 1/4 yards 54-inch.

Printed directions on each pattern part. Easier, accurate. Send fifty cents (coins) for this pattern—add 10 cents for each pattern for first-class mailing. Send to Marian Martin, Medford Mail Tribune, Pattern Dept., 232 West 18th st., New York 11, N. Y. Print plainly name, address with zone, size and style number.



GIRLS ELASTIC LEG BRIEFS

Sizes 4-16 **39¢**

Rayon, cotton blend. Soft, absorbent. Bar tacked elastic waist. Elasticized cotton lace leg.



NEW LOW PRICE STRETCHABLE TIGHTS

Sizes 4-14 **1.79**

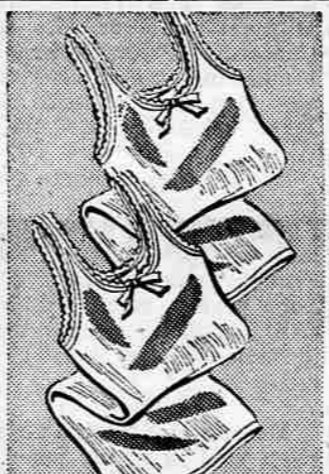
Penney's famous stretchable tights! Sized for perfect fit. Red, black, royal, navy, dark green, beige. Small, medium and large.



DIMPLE KNIT COTTON PANTIES

Sizes 4-16 **49¢**

Dainty cotton and rayon knit. Elastic waist and leg opening. Assorted pastels and floral prints.



COTTON RIB KNIT VESTS

Sizes 4-16 **39¢**

Extra long for "stay in place" neatness and fit! Shape retaining crew neck. Sizes 4-16.



6-IN-1 SKIRT 6 COLORED LAYERS

Sizes 4-14 **2.98**

6-in-1-skirt of 6 contrast colored layers of lace trimmed nylon net. Nylon tricot waist.



NO IRON COTTON GIRLS SLIPS

Sizes 4-14 **98¢**

Beautiful cotton crepe that needs no ironing. Wash—hang—wear. Wrinkle-resistant. Lacy trim bodice and hemline.



GIRLS FULL NYLON FANCY TRIMMED

Sizes 4-14 **2.98**

Lace and ribbon trimmed ruffles on taffetized nylon skirt, nylon tricot top, elastic back, adjustable straps. 5 shades.



GIRLS' STURDY LEATHER STRAPS

2⁹⁸

Sizes 8 1/2 to 3

At this low price, you get shoes that fit and wear as well as they look! And what good looks they have! Studs! Ornament! Flip straps! Brown.



CONVERTIBLE STRAP SHOES!

5⁵⁰

A, 12 1/2 to 3; B, C, 8 1/2 to 3 Girls love them! These pretty slip-ons convert to single strap shoes in a flash. Sturdy. Made of quality leather, long wearing interflex soles. Good savings.



EYELET LEATHER FLAT IN 8 NEW FALL COLORS

3⁹⁸

sizes AA to C 4 to 10

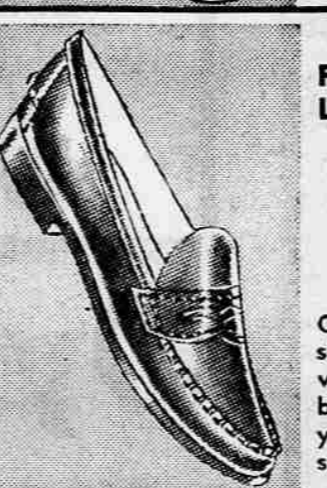
Pick from black, grey, chino, white, red, brandy, osage green, natural. The new eyelet flat is such fashion! Soft glove and brushed suede leathers. Rib crepe sole.



BUYS! GIRLS' LEATHER SADDLES

5⁵⁰

A, B, C, D, Sizes 8 1/2 to 3 Girls love their sporty looks (like collegiate sister's). Their construction and savings rate with mother. Interflex soles. Black and white quality leather.



FOR CAMPUS! LEATHER SLIP-ONS

3⁹⁸

Sizes 12-3 and 4-10

Our quality smooth leather slip-ons will take plenty of wear. These classics are big on every campus this year! Also available in suede. In women's sizes.

Penney's Fashionable GIRLS SWEATERS in 100% Orlon 10 beautiful shades

- White
- Red
- Pink
- Light Blue
- Navy
- Turquoise
- Maize
- Palm Green
- Cedar Brown
- Spruce Green

1⁹⁸ SLIPOVER **2⁹⁸** CARDIGAN

Sizes 3-14

No nonsense about Penney's plump cozy orlons. They're soft, yes. But have they got gumption! See how beautifully they hand wash and spring back to shape. And they resist pilling or fuzzing. Come soon for your favorite colors!

GIRLS WOOL FLANNEL WASHABLE FULL SKIRTS

4⁹⁸

Another fine fabric by Miliken combining 85% wool, 15% nylon. Crease resistant, water repellent, spot resistant. Wash by hand or machine. Beautiful fall shades. Full circle skirt. Size 7-14



SHOP PENNEY'S...YOU'LL LIVE BETTER, YOU'LL SAVE!

SEALS

Notary and Corporation

NOW \$7⁵⁰

ALL TYPES of RUBBER and METAL MARKING DEVICES — DATERS NUMBERERS — INDUSTRIAL STAMP INK

RUBBER STAMPS MADE TO ORDER (or through your favorite Stationer or Printer)

Phone SP 2-4773

SUPERIOR RUBBER STAMP CO.

921 So. Holly Street—Medford, Oregon

We Give GREEN STAMPS