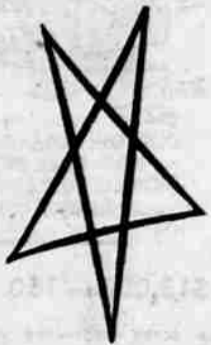


HERE'S A NEW HOME BUY THAT IS REALLY

You KNOW It's GOOD Because It's Built by

D. A. PARKER

What a BEAUTY this is! Big CORNER LOT at the corner of ALAMEDA and OLYMPIC . . . low pleasing lines, natural green stone roof. Three large bedrooms with lots of storage space, large livingroom and large family room, both luxuriously carpeted and each with an Arizona flagstone fireplace. Oak paneling in the livingroom; birch in the family room, and both have low massive beam ceilings. The kitchen is a real dream! Built-in oven, counter-type range, formica drains, unique low dining table between kitchen and family room. Automatic baseboard electric heating. Patio off the family room with glass doors. Two full baths with loads of shining ceramic tile. Light, spacious utility room, big double garage. Sewer and paving in and paid — truly one of Medford's FINEST HOMES!



Terrific

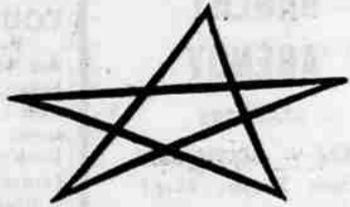
**OPEN FOR INSPECTION
TODAY-11 a.m. Till Dusk**

888 ALAMEDA
In Beautiful MONT CREST Sub-Division

**DOWN PAYMENT and
CONVENIENT TERMS
YOU CAN AFFORD**

LOOK

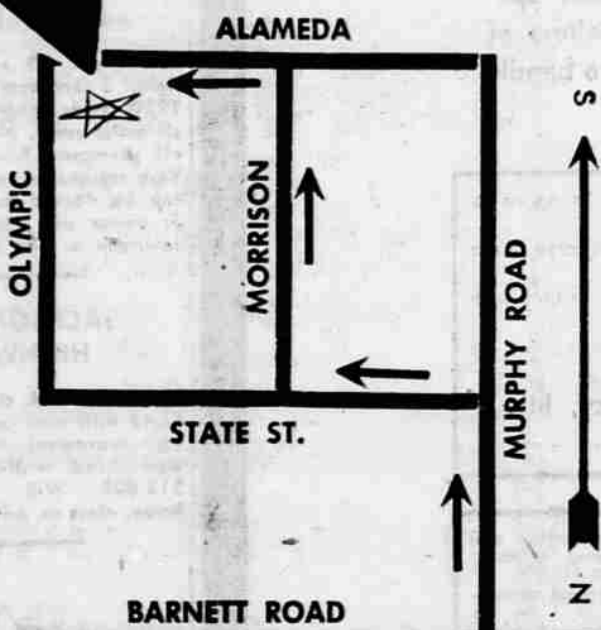
**— AT THESE
FEATURES**



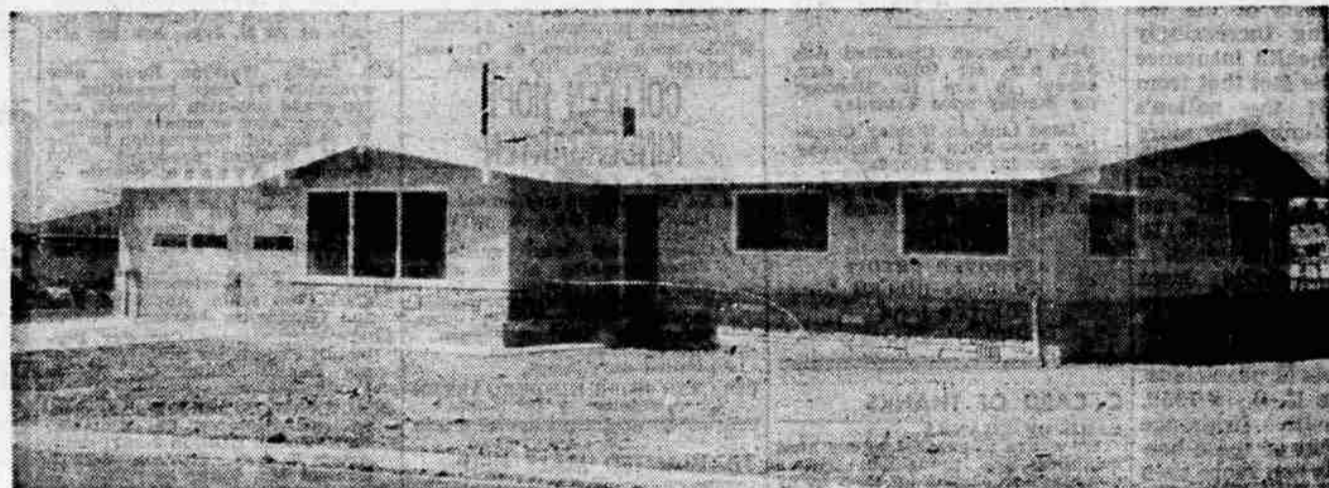
HERE IT IS . . .

888

ALAMEDA STREET

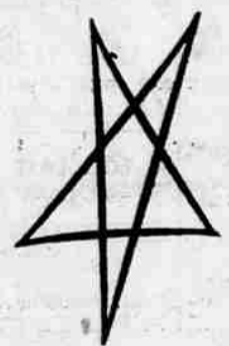
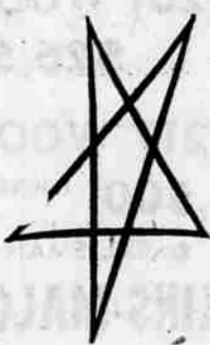


As Your Drive By,
Stop and Inspect
Two Fine New Homes
at
857 MORRISON
—and—
865 MORRISON
Salesmen on Duty



An Example of Finest Home-Building Craftsmanship

- Built by D. A. PARKER, General Contractor, Phone SP 2-5466
- Tile Floors and Carpeting by DYKE FLOORCOVERING, SP 3-3912
- Stone work by GEORGE CLARK, 638 South Holly, SP 3-4690
- Plastering by DON BOOTH, 1842 South Peach, SP 2-2047
- Electric work by RUSH ELECTRIC COMPANY, SP 2-4960
- Floor Finishing by BENNETT'S FLOOR SERVICE, SP 3-4238
- Concrete by TRU-MIX CONCRETE COMPANY, SP 2-5271
- Tile by PHIL and MERRILL STEMBRIDGE TILE CONTRACTORS, SP 2-5097
- Plumbing by PATTERSON PLUMBING COMPANY, SP 3-2768
- Natural green stone roof by HIGHS' CONSTRUCTION CO., SP 2-2461
- Doors and millwork by PADGHAM GLASS & MILLWORK CO., SP 3-4545



DRIVE OUT TODAY HOW TO GET THERE...

Drive east on BARNETT ROAD to the beautiful Rogue Valley Memorial Hospital and turn right — on MURPHY ROAD into Medford's newest fine residential area — MONT CREST Sub-division. Then follow the Medford Realty Company's OPEN FOR INSPECTION SIGNS or this map. You'll be delighted with the beauty and convenience of this fine home — pleasantly surprised at the DOWN-TO-EARTH PRICE, with convenient payments, of course. There will be a salesman on duty to show the home to you and answer any questions you may have.



EXCLUSIVE WITH—

MEDFORD REALTY CO.

**1045 So.
Riverside**
Phone SP
2-5750

