

Clatsop Judge, State Clash Over Social Worker

Portland—UPI—Clatsop County Judge Guy Boyington and the State Board of Health clashed here Wednesday.

The issue was whether Clatsop county must add a psychiatric social worker to its health department staff in order to qualify for \$1,400 in federal mental health funds.

Judge Boyington said Clatsop county does not need a social worker to help its child guidance clinic. He said it has been operating with federal-state help since 1953.

He called a proposal to cut off its allotment unless a social worker is hired as "inconsistent, unnecessary, unreasonable and illegal."

He said the real issue was not money but state control of local programs, and if necessary he would take the question to court, the legislature and the Association of Oregon Counties.

Board President Carl Holm said, "... that sounds like a threat and the board doesn't appreciate it."

"Take it any way you want," Boyington said.

The Clatsop county delegation and board members ended up in handshakes and statements that everything still was on a friendly basis.

The board decided to hold Clatsop county's fund request in abeyance pending a review of the state's mental health policies and programs by the State Mental Health Advisory committee.

The board voted about \$23,000 to help child guidance clinics in Benton, Clackamas, Coos, Douglas, Jackson, Klamath, Lane, Marion and the tri-county area of eastern Oregon.

Coastal Towns Fight for Hearing

Florence—UPI—Two Oregon coastal communities whose competition usually is limited to sports, are battling to see which will hold a Senate hearing on the proposed Oregon Dunes National Seashore.

The two towns are Florence and Reedsport, which are 20 miles apart. The hearing is scheduled for sometime in October.

Sen. Richard L. Neuberger (D-Ore.) who made the proposal to create the 35,000-acre seashore between the two towns, favors holding the hearing in Reedsport.

A petition to hold the hearing has been signed by more than 800 persons. It declares that the Florence area is much more concerned about the proposed seashore because there are 250 homes in the area which the park service has announced that it "hopes eventually to eliminate."

Florence backers say that taxes lost in the event the park was established would come almost entirely from the local school district.

Reedsport claims it is just as vitally concerned because the 10,000-acre Crown Zellerbach tree farm, about 3,000 acres of which are in the proposed area, lies north of the city.

Local officials said Sen. Wayne Morse (D-Ore.) has indicated he favors the Florence side.

The local Chamber of Commerce passed a resolution last spring opposing the seashore. The Reedsport Chamber has not yet taken a stand but has been hearing speakers from both sides.

Paper Processing Planned in Ripon

Ripon, Calif.—UPI—A seven million dollar paper processing plant will be built just south of the city limits of this San Joaquin Valley community, it was announced Thursday.

The plant will be built by the Lee Paper company, Vicksburg, Mich., and the Simpson Paper company, Everett, Wash., which is in the process of merging with Lee.

Thomas Leddy, representative of Lee, said the multiple story structure covering 220 acres will be in full operation in 18 months to two years. It will employ 100 workers in the first stage of operation, 200 after two years, with an estimated million dollar a year payroll.

Leddy said the plant will have an annual output of between 15,000 to 18,000 tons of high grade paper such as tracing paper, base paper for blue prints, photographic base paper, and text paper.

Dry pulp will be brought by rail from the Atlantic seaboard. Some will come from Europe.



AUGUST CLEAN-UP SALE!

men's wash and wear suits ...



One and two-pant models. Dacron, rayon blends. Solid colors, fine slub weave fabrics. In regulars, shorts and longs.

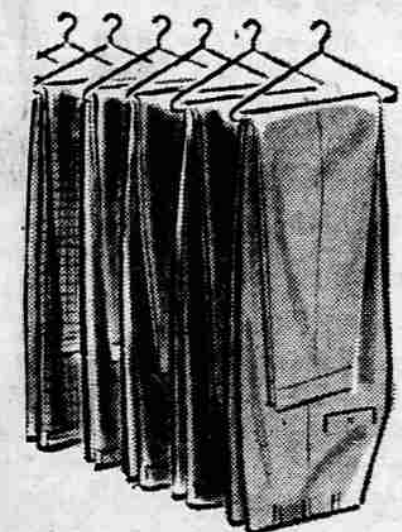
REG. 35.00

27⁸⁸

REG. 39.95

32⁸⁸

men's light weight wash and wear dress slacks ...



Dacron-rayon blends with built-in crease resistance. A saving you won't want to miss!

REG. 7.95

5⁸⁸

REG. 9.95

7⁸⁸

men's lightweight sports coats

INCLUDED ARE MANY WASH AND WEAR



Good patterns, good styles. Your chance to save on that extra sportcoat you have been wanting.

REG. 17.95

12⁸⁸

REG. 25.95

18⁸⁸

MEN'S WASH AND WEAR DRESS SHIRTS
Broadcloth or oxford cloth with convertible cuffs. Sizes 14½ to 17. Comparable value 4.00 **2 for 5.00**

MEN'S STRIPED DENIM JACKETS
By famous maker. Sizes S-M-L-XL. Regular 4.98 **3.44**

MEN'S CENTENNIAL DERBIES
Now Only **19¢**

FINAL CLEARANCE spring & summer dresses

COTTONS — RAYONS — SILKS — NOVELTY FABRICS. MANY STYLES IN CASUALS AND DRESSY FOR AFTERNOON OR EVENING. PASTELS AND DARK TONES. BROKEN SIZES AND STYLES.



9 only
Values to 22.95
3.00

10 only
Values to 25.00
6.00

one group
Values to 14.98
10.00

one group
Orig. 17.98 to 25.00
15.00

ALL SALES FINAL
NO RETURNS—NO EXCHANGES—NO LAY-AYS



CLEARANCE summer suits

15 only
Orig. 10.99
4.00
SIZES: 10, 20½, 22½

7 only
Values to 29.95
7.00

**4 only—coats
wools, rayons 7.00**

table of odds & ends

\$1. to \$7.

Novelty T-Shirts, Slacks, Blouses, Calfskinners. Cotton Print Skirts, Jackets, Jamaicas, Skirts, Sweaters, Jeweled Sweaters, Capris.

Many items on this table can be worn for fall... Pick up your extra summer separates at great savings!

CHILDREN'S (Second Floor)

- LITTLE GIRLS' SWIM OR PLAYSUITS
Cotton lined. Sizes 2 to 4.
Regular 1.98 **1.49**
Regular 2.98 **2.29**
- SEERSUCKER SNAPCROTCH CREEPERS
Girls' or boys. Sizes 12 months to 30 months. Regular 2.98 **2.29**
- 2-PC. BOYS' OR GIRLS CREEPERS
Regular 3.98 **1.99**
- GIRLS' SUB-TEEN DRESSERS
Formerly 9.98 to 14.98 **1/3 OFF!**
- SUB-TEEN SEPARATES
Cotton Capris, Shorts, Chemises.
Reg. to 4.98 **50¢ & 1.00**
- FAMOUS MAKE KNIT PAJAMAS
1 Piece and 2 Piece. Prints. Size 1 only.
Reg. 2.25 — While They Last **1.00**
- GIRLS' SLEEVELESS BLOUSES
By Ship 'n' Shore. Sub-teen sizes.
Regular 3.98 — Now **2.98**
Regular 2.98 — Now **1.98**

ACCESSORIES — GIFTS

- BATHE AND GLOW—ON SALE SATURDAY ONLY!
Bathe and Glow's rich oil penetrates deep into summer's dry skin.
Regular 1.75 size **1.19**
- NYLON & LACE PUFF SLEEVES
To dress up that sleeveless dress.
Regular 2.98 **2.39**
Regular 1.98 **1.39**
- ALL WOOL HEAD SCARVES
Large 30" size in new fall shades, bright pastels for back-to-school.
Regular 1.98 **1.39**
- PENNEY CANDY JARS
Small, Medium and Large
NOW **1/2 PRICE!**
- COMPLETE SET CHINA
8-Pc. Setting "Twilight".
Reg. 16.88 **8.44**
- GIANT SERVING PLATTERS
Embossed fruit design.
For patio serving **3.88**
- LARGE IMPORTED SALAD BOWLS AND PITCHERS. For Patio Serving **66¢**
- BROOKPARK ODDS AND ENDS **1/2 PRICE!**
- DUTCH TREAT CHINA
Complete 20 Pc. Set.
Was 10.98 **5.50**
- TEA AND TOAST SETS **99¢**

YARDAGE — DOMESTICS

- COTTON DRESS FABRICS
Assorted types and styles.
Regular to 1.49 **55¢**
- BETTER DRESS FABRICS
Nylons, Rayons, Arnels.
Values to 1.98 **77¢**
- SUITINGS
In Prints, Silks, Flannels.
Values to 2.98 **1.44**
- CIRCLE SKIRT FABRIC
By California Hand Prints. 4 Yards to a skirt. Regular 8.00 **4.98**
- LITTLE GIRLS' DOLL DRESSES
Assorted styles.
Regular to 4.98 **1/2 PRICE!**
- SATEEN DECORATOR THROW PILLOWS
Regular 3.98 and 4.98 **1.88**
Regular 6.95 **3.88**
Regular 7.95 **4.88**
- BETTER BEDSPREADS
Full size. One of a kind.
Regular 29.95 **14.88**
Regular 39.95 **24.88**
Regular 45.95 **24.88**
- SHEET CLEARANCE
Pacific Percale, twin size only.
Regular 2.39 **1.77**
Cannon Muslin, twin size contour.
Regular 2.19 **1.77**
Cannon Muslin, full size contour.
Regular 2.29 **1.77**

- CHILDREN'S ROUND PLASTIC WADING POOLS
Regular 2.98 **1.99**
Regular 4.98 **3.99**
Regular 7.98 **4.99**



SALE STARTS SATURDAY 9:30 A.M. — SHOP IN AIR-CONDITIONED COMFORT