

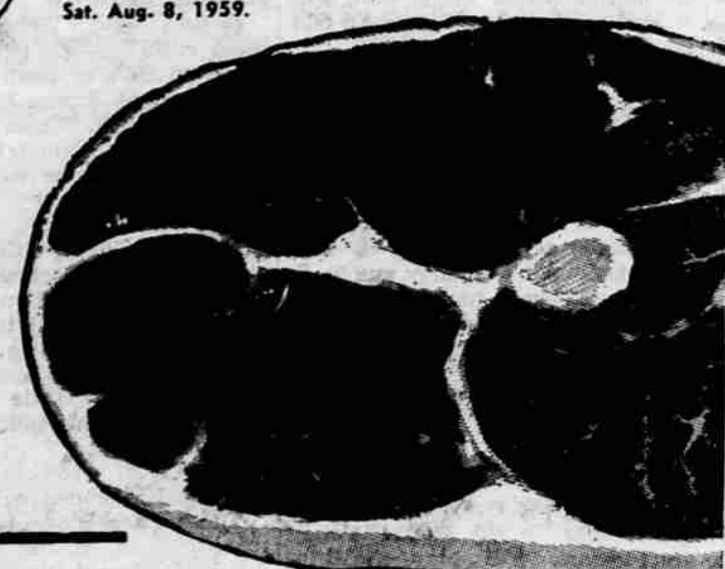


IF YOU'RE NOT TRADING AT THE GROCETERIA YOU'RE PAYING TOO MUCH!

Swift Premium or U.S. Graded Choice Steer

Round Steak **79c** LB.

Cut thick for Swiss or Thin for Pan Fry — Your Choice.



SWIFT PREMIUM BRAND. OLD FASHIONED SMOKED.

BOLOGNA CHUNK STYLE **37c** lb

SWIFT PREMIUM BRAND — VACUUM SEALED. ASSORTED TABLE READY

LUNCH MEAT 29c package **3 FOR 85c** lb

U.S. GRADED CHOICE STEER OR SWIFT PREMIUM BONED AND ROLLED — WASTE FREE.

RUMP or CROSS RIB ROAST **89c** lb

SWIFT PREMIUM BRAND OR U.S. GRADED CHOICE — Waste removed — Oven ready — Small size

LEG-O-LAMB The ideal Roast for warm weather eating pleasure **73c** lb

SWIFT PREMIUM BRAND OR U.S. GRADED CHOICE SMALL

LOIN LAMB CHOPS **98c** lb

ARMOUR'S STAR BRAND COUNTRY STYLE THICK

Sliced Bacon

2 lbs. 89c SEaled PACKAGE

Groceteria PRODUCE

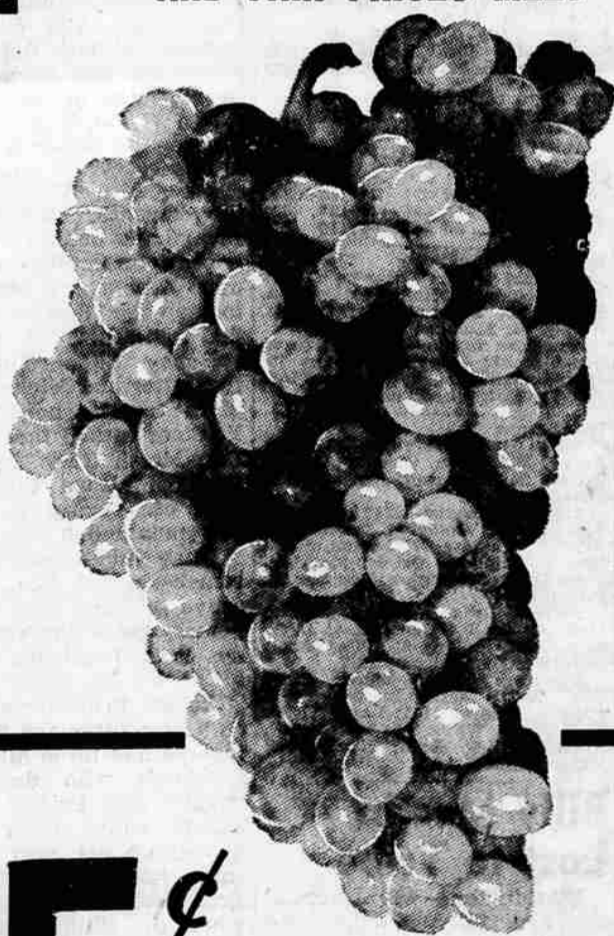
LUSCIOUS, PLUMP, JUICY THOMPSON

AT A NEW PRICE

SEEDLESS GRAPES

10c LB.

WHERE TOP QUALITY AND FAIR PRICES MEET



For Low Calorie Sweetness

Fresh California Slicing

TOMATOES 2 lbs. **25c**

Your Choice of Sizes Medium or Xtra Large

Grown Right. Shipped Right in Refrigerated Trucks. Kept Right in Refrigerated Cases. They are loaded with natural goodness.

Beverage Base	Real Gold Asst. as you wish can 15c	7 Cans \$1.00	Save Up to 37c
Nescafe Instant Coffee		6-oz. Jar 79c	Save 40c
White King "D"		Giant pkg. 59c	Save 20c
Hungry Jack Flour		25 Lb. Bag \$1.75	Save 50c
White Star Chunk Tuna		Family size can 39c	Save 8c
Borden's Mayonnaise		Quart Jar 49c	Save 10c
Frozen Pies	Simple Simon Apple, Peach, Cherry	39c	Save 14c

Local I.O. Chief	SWEET CORN 59c DOZEN
	Fresh from the field. No finer Corn at any price.
Jumbo Mendota	SQUASH 2 LB 25c
CANTALOUPE	
TOP OF THE CROP 9c lb	
Local Fancy Grade Peaches	FOR CANNING FREEZING OR SLICING RED HAVEN \$2.49 DIXIE GEM \$2.25 lb

Stocks Advance; Sharp Losses Noted

New York — (AP) — Stocks advanced today on average despite sharp losses in the electronic and other glamor issues. Most of the leading issues in the industrial group were up small amounts. A few special issues rose as much as 3 points and several stocks mounted 1 or 2 points to new highs. Among the better performers in the industrial department were Allied Chemical, up 2 at its best and International Paper up more than a point. Amerada and Gulf lost more than a point each in the oils but other issues held in a narrow area. The automobile issues ruled firm. So did auto accessory companies where Electric Auto-Lite rose nearly a point. U.S. Steel was a firm spot in the steels and International Nickel ruled higher in the metals. Alcoa declined in the aluminum group. Raytheon in the electronics set a new low on a loss of nearly 2 points. Texas Instruments was down more than 5 points. Zenith fell 4.

DOW-JONES AVERAGES

New York — (AP) — Dow-Jones final stock averages: 30 industrials 671.98, off 0.35; 20 railroads 165.23, off 0.20; 15 utilities 91.20, up 0.45, and 65 stocks 222.70, up 0.07. Sales today were about 2,610,000 shares, compared with 2,630,000 shares Wednesday.

Today's prices on selected stocks:

Allied Chemical	130 1/4
Alum Co. Am.	108 1/4
American Can	45 1/2
American Mtrs.	46 1/8
Anaconda Copper	63 5/8
Armco Steel	79
Bendix Av.	76 1/2
Bethlehem Steel	56 1/4
Boeing Air	34 1/8
Caterpillar Corp.	106 1/2
Chrysler Corp.	66 1/4
Continental Can	50 1/4
Crown Zellerbach	53 1/4
Curtiss Wright	23 1/2
Dow Chemical	87 1/2
Du Pont	71
Eastman Kodak	93 3/4
Firestone	138 1/2
General Electric	80 1/2
General Foods	98 1/2
General Motors	56 3/8
Georgia Pacific	46 1/2
Graham Paige	27 1/2
Greyhound	21 1/2
Gulf Oil	115 3/4
Homestake Mining	41 1/4
Idaho Power	45 3/4
I. B. M. xd	42
Kaiser Ind.	17 3/4
Int. Paper	129 1/2
Johns Man.	59
Kennecott Copper	104
Lockheed Aircraft	29
Katy	5 1/2
Montana Power Co.	25
Montgomery Ward	49 3/4
Nat'l Biscuit	54 1/2
New York Central	28 1/4
Pac G & El	64 1/4
Penney, J. C.	111 1/4
Penn RR	17 1/2
Radio Corporation	63 1/4
Richfield Oil	84 1/2
Safeway	37 1/4
Sears	46 1/8
Shell Oil	82 1/4
Socony Mobil Oil	46 5/8
Southern Co.	40 1/4
Southern Pacific	71
Standard California	54
Standard Indiana	48 1/4
Standard N. J.	53 1/8
Sun Mines	7
Texas Co.	87 1/4
Texas Gulf Sulfur	20 3/8
Tex Pac Land Trust	23 3/4
Transamerica	31 1/2
Trans Wild Air	21
Tri-Continental	42 3/4
Union Carbide	146
Union Pacific	33 3/4
United Aircraft	51 1/8
U. A. L.	41 1/4
U. S. Rubber	68
U. S. Steel xd	103 1/2
Youngstown S & T	139 1/2

Warnings Hoisted On Oahu as Dot Approaches Island

Honolulu — (AP) — Hurricane warnings were hoisted for the western half of Oahu Island and eastern half of Kauai Channel today as Pacific hurricane Dot swerved north and approached the two islands.

The weather bureau ordered whole gale warnings for the rest of Oahu, where Honolulu is located, and gale signals for the waters west of Maui, Lanai, Molokai and Kauai islands.

The hurricane has cost two lives. A motorist died on a rain-slicked highway on Oahu and a tugboat skipper was killed in a boat collision in Lanai Harbor during the drenching rains.

Property loss estimates rose to \$34,000 including heavy damage to the famed Kona Inn.

The storm, though diminished in strength, still carried center winds of 103 miles an hour and 58-mile an hour winds extending out for a radius of 40 miles.

It was located 130 miles south of Honolulu early today, moving northward at nine miles an hour. The weather bureau expected it to remain on this course for the next 24 hours.

Move to High Ground Residents along the southern shore of Kauai began moving to higher ground and the Red Cross set up three shelters.

Thirty-foot waves were expected on the southern and western shores of all Hawaiian islands.

The bureau said danger of severe damage was past, barring a sudden change of course by the hurricane, now heading north. The storm swept past the islands Wednesday, but the main force of the 130-mile an hour hurricane remained safely at sea.

However, the bureau said the hurricane would pass within 40 miles of Niihau, a privately owned island off the coast of Kauai, where only pure-bred Hawaiian people live. Residents along the southern shore of Kauai began moving to higher ground Wednesday night. The Red Cross set up three shelters and urged the 400 persons who populate the shore to move to higher ground until the storm passed.

Filming Stalled At Waikiki Beach, Arthur Godfrey's television filming program was stalled for the third day. Godfrey, making his first television since his lung cancer operation, began a planned two days of shooting Monday, but has been able to complete only two hours of filming.

Meanwhile, the Coast Guard evacuated its 15-man force from the tiny island of French Frigate Shoals, where it maintains a long-range navigation station. The island, located northwest of the major island chain, is only a few feet above sea level, and may be covered in the event of rough seas.

Honolulu was pelted with heavy rains and gusty winds Wednesday afternoon, but the sparsely populated, high coast-line of south Hawaii took the brunt of the storm.

Ranchhand Injured Fatally Near Redmond Redmond — (AP) — Ranchhand James Greenstreet, 54, employed at the Adrian Ruth ranch east of here, was injured fatally Wednesday when he fell from a derrick machine used to lift baled hay onto stacks.

Wind apparently made him lose his balance, according to witnesses. He was pronounced dead on arrival at Central Oregon District hospital here.

Springfield Boy Found Hanged

Springfield, Ore. — (AP) — A 13-year-old boy was found hanged in his home here Wednesday night, and police said he may have been experimenting after hearing about the hanging of another boy.

Police Sgt. Buford Howard said Dennis Carl Willhite, 13, son of Mr. and Mrs. Edgar C. Willhite, Springfield, apparently was cheerful as he played with friends Wednesday night, and told them he was going to bed early because he had to get up early to go to work.

His father noticed the light on in his son's room a little after 9 p.m. and went up to remind him it was time to get to sleep. He found the youth hanging with a makeshift noose knotted around his neck.

Sergeant Howard said Dennis may have been "experimenting and went too far" after hearing about the hanging at Lost Creek Monday evening of David Arthur Siems, 14, a parolee from MacLaren School for Boys at Woodburn.

Police said the Siems boy shot and killed his mother in 1956 and had been dependent since then. He was in a foster home at Lost Creek when, according to police, he hanged himself.

The cost-of-living index in Greece rose less than three per cent in 1957.

THE DANMOORE HOTEL
1217 SW Morrison St.
PORTLAND, OREGON
All transient guests. All those who come, return. Rates not high, not low. Free garage, TV's and radios. Reputation for cleanliness.
Children under seven no charge