

### Women Will Outnumber Men

Kansas City, Mo. (Science Service) — Women will outnumber men five to two when normal life expectancy hits 100 years, two doctors have predicted here.

Females can withstand more abuse than males. Perhaps it is because the cellular constitution of the female has a greater built-in reserve capacity, Drs. Edward L. Bortz of Philadelphia's Lankenau Hospital and Walter M. Bortz II, of Charity Hospital in New Orleans, suggest in GP, the journal of the American Academy of General Practice.

Commenting further on the processes of aging, and the growing numbers of senior citizens, the doctors pointed out that our society often measures the performances of older individuals on the basis of the abilities of younger persons. The assets which the older man has that the younger man lacks are often overlooked.

With the coming of the machine age, many of the physical abilities of the young become less important while the experience and knowledge gained through time by older citizens may become of greater value, the doctors pointed out.

### Wider Choice of Paints Are Noted

Fargo, N. D. (UPI) — When a do-it-yourselfer arms himself with a paint brush for a little interior decorating, one of the hardest things to decide next to what color might be what paint.

According to A. E. Rheineck, a paint specialist at the North Dakota Agricultural college, the paint industry now offers a far wider choice of paint types than ever before.

Rheineck said paint with a rubber or latex base is one of the most recent innovations. He said it's easy to use, requiring only water for thinning and for cleaning the brush later, but it is not recommended for bathrooms or kitchens because it may not be scrub-resistant enough.

Another good paint type for interiors is soybean oil modified resin. It forms a durable surface with a high gloss finish, goes on quickly and dries without leaving an odor.

Interior paints with linseed oil are pretty much out of the picture now, Rheineck added, and you don't have to put up with their slow and smelly drying any more.

Weight for weight, plywood is stronger than steel.

### Look--Jiffy-Cut!



by Marian Martin

**JIFFY-CUT.** Just place tissue pattern on fabric—presto! cut out entire apron at once. Takes ONE yard 35-inch fabric—sew-thrifty in bright bottom with gay binding trim. Tomorrow's pattern: Child's dress.

Printed Pattern 9403: Misses' Medium Size only. Takes 1 yard 65-inch. Jiffy-cut in one piece.

Printed directions on each pattern part. Easier, accurate. Send Thirty-five cents (coins) for this pattern—add 10 cents for each pattern for first-class mailing. Send to Marian Martin, Medford Mail Tribune, Pattern Dept., 232 West 18th st., New York 11, N.Y. Print plainly NAME, ADDRESS with ZONE, SIZE and STYLE NUMBER.

# Choice FRYERS



## Lickin' Good for Picnics!



CUT UP

# 39¢

lb.

OREGON GROWN — FRESH

These are top grade fryers—meaty . . . tender . . . and lickin' good—the pick of the flock—so pardon us, if we crow about them. They're really a grand taste treat . . . a really great value at our low, low price. Each one is skillfully cut in serving pieces . . . carefully packaged to preserve freshness and flavor. Enjoy a chicken fry this weekend—it's the perfect picnic lunch.

### WHAT A BUY!

<b>Hormel Bacon</b> SLICED	Value Brand Tasty!	<b>39¢</b> lb.
<b>Beef Liver</b> FRESH — SLICED	Wonderful Eating and Healthful	<b>39¢</b> lb.
<b>Pork Sausage</b> COUNTRY STYLE	Spiced Just Right	<b>39¢</b> lb.
<b>Large Bologna</b> NEBERGALL'S	Any Piece	<b>39¢</b> lb.
<b>Fresh Salads</b> IDEAL FOR PICNICS	Potato Macaroni Jello	<b>39¢</b> pt.

PICTSWEET FROZEN <b>PEAS</b> 7 10-oz. pkgs. <b>\$1</b> Garden Fresh	PICTSWEET FROZEN <b>CORN</b> 7 10-oz. pkgs. <b>\$1</b> Whole Kernel	HI WEST FROZEN <b>STRAWBERRIES</b> 6 10-oz. pkgs. <b>\$1</b>	BLUE GOOSE FROZEN <b>PEACHES</b> 7 12-oz. pkgs. <b>\$1</b> Case of 24 Pkgs. <b>\$3.29</b>
<b>COFFEE</b> MJB	2 lb. Can <b>\$1.29</b>	1 lb. Can <b>65¢</b>	
<b>MILK</b> GARNATION NON-FAT DRY		8 Quart Pkg. <b>59¢</b>	
<b>FLOUR</b> Oregon's Own Kitchen Queen		25 Pound Bag <b>\$1.69</b>	
<b>MAYONNAISE</b> LAURA SOUDDER		Quart Jar <b>45¢</b>	
CAMPBELL'S <b>TOMATO SOUP</b>	OVEN-FRESH SODA <b>CRACKERS</b>	FANCY <b>OLEO</b>	WHITE STAR <b>SUGAR</b>
10 10½-oz. cans <b>\$1</b>	2 lb. box <b>39¢</b>	8 lbs. <b>\$1</b>	10 lb. sack <b>98¢</b>

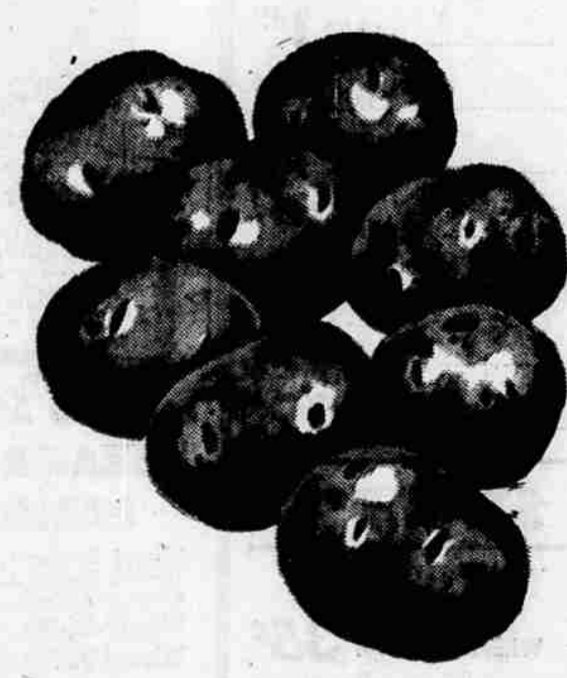
<b>PEACHES</b>	DEL MONTE Sliced or Halves	4 No. 2½ CANS	<b>\$1.00</b>
<b>ORANGE DRINK</b>	SHASTA 46-oz. can	5 CANS	<b>\$1.00</b>
<b>ORANGE BASE</b>	SUNKIST 46-oz. can	7 CANS	<b>\$1.00</b>
<b>PORK and BEANS</b>	VAN CAMP'S	5 No. 2½ CANS	<b>\$1.00</b>
<b>SPAM LUNCHEON MEAT</b>		12-oz. CAN	<b>39¢</b>
<b>TUNA FISH</b>	DEL MONTE CHUNK	5 No. ½ CANS	<b>\$1.00</b>

<b>GERBER'S STRAINED BABY FOOD</b>	10 Cans for <b>79¢</b>
<b>CARNATION MILK</b>	Tall Cans 10 for <b>\$1</b>

<b>Maxwell House INSTANT COFFEE</b>	New Large 10-oz. Jar (\$1.83 Values)	<b>\$1.23</b>
-------------------------------------	--------------------------------------	---------------

**TORNADO BOWL SPECIALS — at the Oakdale Big "Y"**  
These Specials Good Friday and Saturday

<b>SUNDAES — Pineapple, Strawberry, Chocolate</b>	<b>19¢</b>
<b>MILK SHAKES — Rich 'n' Creamy</b>	<b>19¢</b>
<b>BROILED HAMBURGERS — all the trimmings</b>	<b>25¢</b>



10-LB. CELLO BAG  
U.S. No. 1 Idaho  
**POTATOES**  
**39¢**

**FREESTONE PEACHES** Lug **\$1.98**

By the Pound—13c

<b>RADISHES</b>	3 bn. <b>10¢</b>
<b>SUNKIST LEMONS</b>	<b>29¢</b> doz.
<b>CRISP CELERY</b>	<b>19¢</b> ea.

IT'S WISE! SH  
**Big Y**