

Locals

Explosions Effect Magnetic Field

Washington (Science Service) — Hydrogen bombs exploded high in the atmosphere have an immediate and widespread effect on the earth's magnetic field, a Japanese scientist reported here.

Dr. Hiroshi Maeda of Kyoto University, Kyoto, said he found "marked changes" in records of the magnetic field strength at Honolulu on Aug. 1 and 12, 1958, at times corresponding to high altitude bomb tests.

These nuclear explosions were conducted in the upper atmosphere over Johnston Island last summer by the U.S. Dr. Maeda said that other Japanese scientists have found the two test explosions caused disturbances in ionospheric radio propagation, in atmospherics and in the ionosphere.

Dr. Maeda suggests that the initial changes in records of the earth's magnetic field at places several hundred miles from the explosion are due to a shock wave having a high velocity, probably greater than a few hundred miles per second, and its ionizing effects. The main changes, occurring later, are due to an increase of electrical currents resulting from increased conductivity caused by ionization by high-velocity particles behind the shock wave.

Studies of these effects should help in understanding the theory of auroras and magnetic storms, Dr. Maeda reported in the current Journal of Geophysical Research, a publication of the American Geophysical Union here.

New City Editor For Ashland Newspaper

Ashland — Frank Pinnock took over the duties of city editor of the Ashland Tidings today, succeeding Rudi Kornmann, who is returning to Colusa, Calif., as city editor of the Sun-Herald there.

Pinnock has been news editor of radio station KMED. He came to Ashland in 1953 as an actor in the Shakespearean Festival and returned the following year and has been a resident of Ashland since then.

Kornmann joined the Tidings staff in 1958.

Pinnock is a member of the Ashland Lions club and chairman of the Ashland Centennial committee. He lives at 459 Herbert st. He and his wife, Betty, have two children, Rebecca and Geoffrey.

Warm Springs Man Held in Deaths

Salem—UPI—A Warm Springs Indian, Clifford James Crowe, 18, was booked Sunday night by state police in connection with a traffic accident which claimed the lives of two Salem youths.

The bodies of Jimmie Owen Evans, 22, and Terrill L. Van Hous, 17, were found Sunday morning along Highway 99E about five miles north of here.

State police said Crowe admitted driving an automobile that struck the two youths Saturday night. He was booked on a negligent homicide charge.

Trial Date Regarding Slot Machine Set

Neal Patrick Chatterton, 29, of 657 Oak st., Ashland, was released on bail from county jail today and a trial was set for Sept. 8 on a charge of possessing a gambling device.

Another charge against him, of concealing stolen property, was dismissed because of insufficient evidence at a preliminary hearing today.

Chatterton had been in jail since his arrest on July 23 on a warrant issued by District Court Judge Roy Bashaw.

It was earlier reported that a slot machine had been seized at Chatterton's residence.

Obituaries

EWING Y. MITCHELL

Ashland — Ewing Young Mitchell, 49, of 241 Hershey st., died Aug. 1 at his residence following a long illness. He was born Dec. 27, 1909, in Pezely, Mo.

He served in the U. S. Navy from 1927 until 1935 serving as an aviation machinist's mate. April 19, 1942, he married Glenna Hartle, in Yuma, Ariz., and moved to Ashland in 1944 from southern California. He was a member of the Elks lodge, Ashland; and worked for M. C. Lininger and Sons for several years.

Survivors include his widow; a son, Richard, and daughter, Mrs. J. M. Garland, all Ashland; brother, Chester C. Mitchell, Ashland; three grandchildren; a sister, Mrs. Gordon Hurst, St. Louis, Mo., and his father, James E. Mitchell, Belgrade, Mo.

Funeral services will be held Tuesday, Aug. 4, at 10:30 a.m. at Litwiller's Mountain View chapel with the Elks lodge in charge. Interment will be in Mountain View cemetery.

EARL WHISLER

Grants Pass — Earl Leroy Whisler Sr., 67, of 11 NE Savage st., Grants Pass, died in Josephine General hospital Sunday.

He was born in Clearfield, Iowa, Dec. 20, 1891.

Survivors include two sons, Earl Whisler Jr., Grants Pass; Theodore H. Whisler, Medford; one daughter, Edna Bevel, Redmond, Ore.; two brothers, Percy Whisler, Seattle; Victor Randolph, who lives in Arkansas; two sisters, Mrs. Lyle Parker, Tacoma, Wash., and Lois Hysberg; and six grandchildren and two great grandchildren.

Funeral services will be held at 10 a.m. Tuesday, Aug. 4, at Hull and Hull Funeral home, Grants Pass. The Rev. L. G. Fraser will officiate. Interment will be in Hawthorne Memorial gardens.

VERNON KELLER

Vernon Keller, 52, of Happy Camp, Calif., died yesterday in a local hospital. Funeral arrangements will be announced by Conger-Morris Funeral home.

GEORGE STEVENS

Ashland — George Stevens, 80, of Klamath Falls, died in a rest home here this morning. He was born March 31, 1879, in Gallia, Kan. He was a veteran of the Spanish-American war.

Funeral arrangements will be announced by Litwiller's Funeral home, Ashland.

There are about 7,000 varieties of apples, according to the Department of Agriculture, and 12 of these are widely grown in America.

Portland Livestock

Portland—(UPI)—Livestock: Cattle 1,500; includes 18 loads fed steers, 6 loads heifers; slow; no choice fed steers; sold early; few sales good steers 25-50c lower; several lots 950-1050 lb. good fed steers 26.00-27.25; choice held above 28; few utility cows 16.50-17.50; canners-cullers 13.50-15.50.

Calves 200; few good weaners 26-28; choice scarce; utility-standard 19-25; 37-head consignments choice 39-42; mixed and heifer stock calves 29.50.

Hogs 1,500; around 10 per cent sows; slow; strong; to high grade; 1 and 2 butchers mostly 16.25; few lots 16.50, mixed 1 and 2 grade 13.00; 1 and 2 grade 13.00-14.25.

Sheep 800; slaughter lambs steady with late week feeders steady; ewes not established; choice 90-99 lb. eastern Oregon spring lambs 20.50; mostly choice nearby lambs 20; good-choice 75-90 lb. feeders 15-16.

Portland Hay, Grain

Portland—Wholesale Hay Prices: New crop No. 2 green alfalfa, baled f.o.b. Portland and Seattle, 832-33 ton; some to 835 at Portland.

Wholesale Prices as reported by the Portland USDA market news service: Basic by the ton, bulk, prompt delivery, f.o.b. track, Portland.

Portland Produce

Portland (UPI) — Dairy market: Eggs—To retailers: Grade AA large, 47-49c doz.; AA small, 26-28c cartons 3-4c additional.

Butter—To retailers: AA and grade A prints; 65c lb.; carton, 10 higher; 30 prints, 65c.

Cheese—Medium cured—To retailers: A grade cheddar single daisies, 41-42c; processed American cheese, 5-lb. loaf, 40-43c.

Farm Market

Prices remained mostly steady on the local produce market today.

Poultry, Rabbits

Live Chickens—Quoted to growers at Portland, Salem and south to Eugene, f.o.b. ranch, No. 1 quality fryers, 2 1/4 lbs., 18c lb.; light hens, 7c heavy hens, 9c.

Dressed Chickens—No. 1 grade dressed to retailers: Fryers, whole drawn, 32-36c lb.; cut up, 27-41c; heavy type whole drawn, 35-38c; light-type cut up, 28-34c lb.

Dressed Turkeys—To producers: A grade young hens, 29c a pound on an oven-ready basis. To retailers: A grade young hens 16 to 20 pounds, 37c with 26-pound or above to 30c a pound; A grade fryer-roaster turkeys, mostly 28c to producers on oven-ready basis and 39c to 43c to retailers.

Rabbits (Average to growers f.o.b. killing plants)—Live white, 3 1/2-4 1/2 lb., 10-12c; Portland, 19-22c; color ed pelts, 8c under. Fresh killed fryers to retailers, 56-58c lb.; cut up, 60-62c.

City Recreation

Summer Schedule

Monday:
8:30—Hawthorne park — girls softball
9:00—Hoover at Washington Bulldogs—boys baseball
1:00—Hawthorne Park — games, arts and crafts
5:25—TIPS in Sports—KYJC—interviews of famous sports personalities
Tuesday:
8:30—Hawthorne park — girls softball
9:00—Wilson at Jefferson Tigers—boys baseball
10:00—Hoover at Jefferson Colts—boys baseball
1:00—Hawthorne Hawks at Hawthorne Bombers—boys baseball
1:00—Hawthorne Park — games, arts and crafts
9:00—Hawthorne park — girls softball
9:00—Jefferson Cubs at Jackson boys baseball
1:00—Union Street Park — arts, games and crafts
10:00—Washington Bulldogs at Washington Panthers — boys baseball
Wednesday:
8:30—Hawthorne park — girls softball
9:00—Wilson at Jefferson Tigers—boys baseball
10:00—Hoover at Jefferson Colts—boys baseball
1:00—Hawthorne Hawks at Hawthorne Bombers—boys baseball
1:00—Hawthorne Park — games, arts and crafts
9:00—Hawthorne park — girls softball
9:00—Jefferson Cubs at Jackson boys baseball
1:00—Union Street Park — arts, games and crafts
10:00—Washington Bulldogs at Washington Panthers — boys baseball

News About Servicemen

COMPLETES COURSE

Capt. John K. Newton, son of Mr. and Mrs. Chester H. Newton, 2208 Oakridge st., Medford, recently completed the military orientation course at Brooke Army Medical center, St. Sam Houston, Texas.

Captain Newton is a graduate of Talent High school and the University of Oregon Medical school, Portland, where he was a member of Nu Sigma Nu fraternity. He was employed at General Rose Memorial hospital, Denver, Colo., prior to entering the Army.

NAVAL REVIEW

Six valley Navy men recently took part in a full-scale naval review and visit to San Francisco, Calif., after completing a major exercise held off the California coast.

Local men included Michael I. Ring, seaman apprentice, son of Mr. and Mrs. George W. Ring, star route, box 175, Springfield, R. H. Babb, seaman apprentice, son of Mr. and Mrs. Fred H. Babb, 402 Fourth st., Jacksonville, both serving aboard the heavy cruiser USS Helena; Gary D. Stinchcomb, radio third class, son of Rhene E. Stinchcomb, route 1, box 19, Rogue River, serving aboard the radar picket submarine USS Rasher.

Also George E. Kile, electronics technician second class, son of Mr. and Mrs. Lee J. Kile, route 1, box 12, Rogue River and husband of the former Avis Hawkins, Rogue River; Lt. (jg) Robert S. Ruffin, son of Mr. and Mrs. Ralph H. Ruffin, Camp White, both serving aboard the attack aircraft carrier USS Hancock; and Glen W. Bradley, storekeeper third class, son of Mrs. Mary R. Bradley, 410 North Main st., Phoenix, serving aboard the destroyer USS Prichett.

IN TEXAS

Capt. James C. Newman, husband of Dorothy Newman, 2971 Table Rock rd., Medford, recently completed the military orientation course at Brooks Army Medical Center, Brooks Army, Texas.

Captain Newman is a graduate of Corvallis High school, the University of Oregon and the University of Oregon Medical school, Portland, where he was a member of Nu Sigma Nu fraternity.

Without development of new alloys capable of resisting high temperatures, the jet engine, like the gas turbine, would not have been practical from an engineering standpoint.

Monel, a nickel-copper alloy, is used for applications that require a high strength material as in the handling of certain liquids such as acids, brine and some of the alkalis.

Investment Funds

Noon Quotations on selected funds supplied by the Medford Branch of Foster & Marshall, members New York Stock Exchange

Fund	Bid	Asked
Bullcock	14.51	15.90
Chem Fund	12.04	13.02
Union Howard Stk	25.37	27.13
Fidelity	17.44	18.25
Group Sec—Avia—Ele	13.50	14.25
Group Sec—Com Stk	14.12	15.46
Group Sec—Pet	11.28	12.35
Group Sec—Steel	11.50	12.32
Group Sec—Tobac	8.12	8.90
Keystone B-3	16.25	17.73
Keystone B-2	15.47	17.00
Keystone S-1	20.33	22.40
Keystone S-2	15.47	17.00
Keystone S-3	16.08	17.55
Keystone S-4	13.08	14.27
Value Line Inc Stk	14.50	15.58
TV-Elec	16.62	18.11
Value Line Inc	5.88	6.43
Wellington	14.87	16.21

Man Lodged After Being Returned Here

Donald C. Gustafson, 20, Medford, was lodged in county jail on a charge of grand larceny after being returned here last night from Phoenix, Ariz., by Chief Sheriff Deputy Paul Bettli.

Bettli said that Gustafson had indicated that he was going to return to Medford.

His arrest is in connection with the taking of property from the Rogue Valley Country club on four separate occasions during June.

The property — meat, liquor, cigars, dishes and some clothing amounted to approximately \$237 in value, deputies said.

In 1925 oil and gasoline accounted for only 28 per cent of the nation's energy requirements. Now they account for more than 60 per cent of the total and the trend is upward.

Average life expectancy at birth of two-thirds of the world's people is now more than 30 years, compared to 70 years in advanced countries.

FESTIVAL PLAYS

Tonight: "King John."
Monday: "Measure for Measure."
Tuesday: "Antony and Cleopatra."
Wednesday: "Twelfth Night" and "Masque."
Curtain Time 8:30 p.m.
Bus from Medford leaves Medford hotel at 7:30; Jackson hotel 7:35 p.m.

Over-the-Counter Western Stocks

The following bid and asked prices on selected Western securities provided by the Medford branch office of Pacific Northwest Company are unofficial and do not represent actual transactions but are intended as a guide to the approximate price range

Common Stocks	Bid	Asked
Bank of America	49 1/4	51 1/4
Calif-Pacific Utilities	35	37 1/2
Cascades Plywood	36 1/2	38 1/2
Cons Freightways	23 1/2	25 1/2
Copco	37 1/2	39 1/2
First National Bank	56	61 1/2
Morrison-Knudsen	33 1/2	37 1/2
Northwest Nat Gas	18 1/2	20 1/2
Pacific Pwr & Lt	39	41 1/2
Permanente Cem Co	26 1/2	28 1/2
Portland Gen Elec	26 1/2	28 1/2
US National Bank	69 1/2	73 1/2
United Utilities	21 1/2	23 1/2
West Coast Tel	23	26 1/2
Weyerhaeuser	48 1/2	51 1/2

Industrial Shares Rise to New High

New York—(UPI)—Industrial shares rose again today with their average in new record high ground for the sixth session in a row.

Today's late feature in the industrial section — General Foods — ran up more than 4 points to a new high. Earlier DuPont had set a new high at 278 3/4, up 4 points, and later slipped back on realizing.

A long list of other industrials moved higher. Steels, oils and motors recorded gains. Tires were strong. Aluminums recovered part of last week's late decline. International Nickel jumped more than 2 in its section. Texaco made a new high in the petroleum group.

Profit taking reduced many of the earlier gains but on the whole the market appeared higher. Railroad issues ruled firm for a time but their performance was a poor one compared with industrials.

Several specials moved up.

DOW-JONES AVERAGES

New York—(UPI)—Dow-Jones averages: 30 industrials 678.10, up 3.22; 20 railroads 167.58, off 0.22; 15 utilities 90.62, up 0.63, and 65 stocks 224.35, up 0.86. Sales today were about 2,410,000 shares compared with 2,270,000 shares Friday.

Today's prices on selected stocks:

Allied Chemical	126 3/4
Alum Co Am	110 1/4
American Can	45 1/2
American Motors	45 1/2
A T & T	80 3/8
Anaconda Copper	64
Arco Copper (kd)	79
Bendix Aviation	78 1/2
Bethlehem Steel	57 1/2
Boeing Air	35 3/8
Caterpillar Corp	108
Chrysler Corp	67
Continental Can	51
Crown Zellerbach	54
Curtiss Wright	34 1/2
Dow Chemical	87 1/4
Du Pont	275 3/4
Eastman Kodak	95 1/2
Firestone	143 1/2
General Electric	81 1/4
General Foods	98 1/4
General Motors	57
Georgia Pacific	46 1/4
Graham Paige	27 1/2
Greyhound	21 1/2
Gulf Oil	117
Homestake Mining	43 1/2
Idaho Power	46
I B M	425 3/8
Kaiser Ind	18 1/2
Int Paper	130
Johns Manville	57 1/4
Kennecott Copper	105 1/4
Lockheed Aircraft	30 1/2
Katy	6
Montana Power	25 1/2
Montgomery Ward	49 1/2
Natl Biscuit	52 1/2
New York Central	28 1/4
Pacific Gas & Elec	64 1/2
Penney J C	112

CRATERIAN

LAST 2 DAYS

BING CROSBY
DEBBIE REYNOLDS
ROBERT WAGNER

BING again, as you liked him BEST!

"SAY ONE FOR ME"

COLOR BY CINEMASCOPE
A 20th CENTURY FOX PICTURE

THEATRE INFORMATION SERVICE
CALL SP 3-7323
FOR FULL INFORMATION ABOUT YOUR THEATRES

Starlite DRIVE-IN
SOUTH PACIFIC HIGHWAY
PHONE SP 2-7710

NOW SHOWING AT ONLY \$1.00 PER CARLOAD
SUSAN HAYWARD
In Her Academy Award Winning Role!

The true story of Barbara Graham!

SUSAN HAYWARD
I want to Live!

THE MURDER TRIAL THAT SHOCKED THE WORLD!
VIRGINIA VINCENT
THEODORE BIKEL

AND ANOTHER ACADEMY AWARD NOMINATED HIT

TONY CURTIS
SIDNEY POITIER
THE DEFIANT ONES

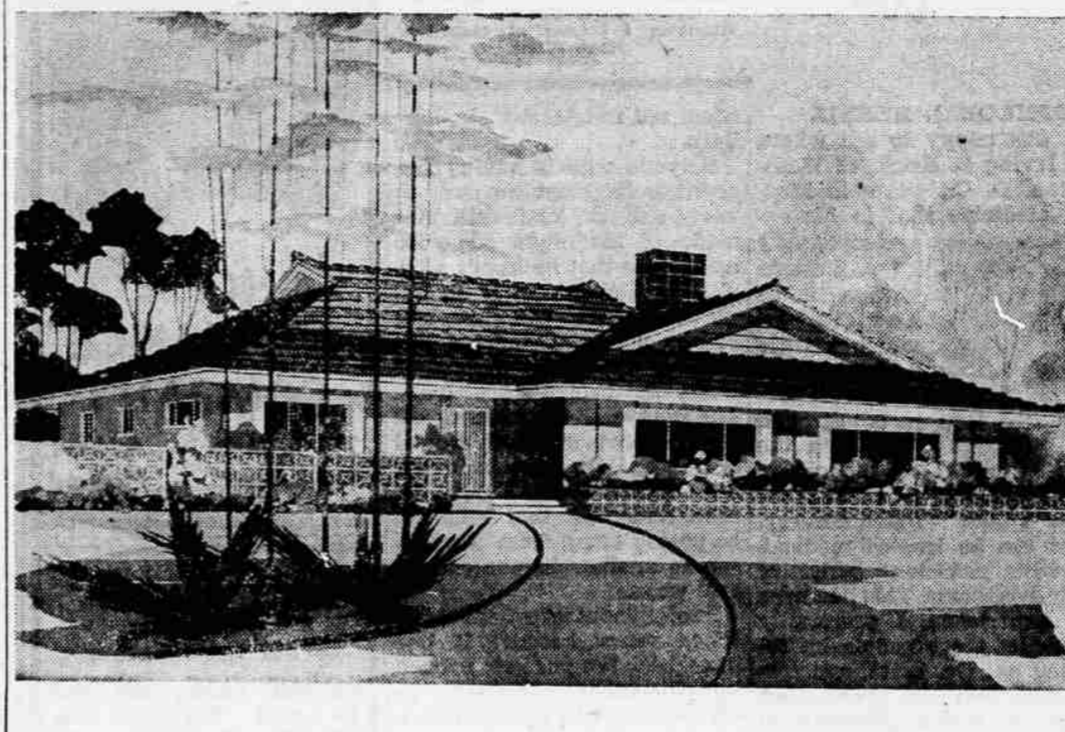
ROGUE DRIVE-IN
CRATER LAKE HIGHWAY
PHONE SP 3-2924

NOW SHOWING THE DRIVE IN EVENT OF ANY SEASON!

Michael TODD's
AROUND THE WORLD IN 80 DAYS
A ACADEMY AWARD WINNING PICTURE
RELEASED THIS MONTH

CO-FEATURE
SHOWDOWN AT BOOT HILL
CHARLES BRONSON
FENTON MYLER

One Show Each Evening
CHILDREN, 12 — 50c
ADULTS, over 12 — \$1.00
LADIES NIGHT TICKETS NOT ACCEPTED



PLAN NO. 3711
1579 SQUARE FEET

This Week's Home of Distinction

This exciting and distinctive home has been designated to be built on an economical budget without sacrificing the comfort and livability which is missing in so many of today's hastily constructed homes. Wide overhanging eaves completely surround the house to protect the windows from rain and to prevent the lower part of the walls from becoming splattered with dirt and water during each rain.

Wide picture frame moulding has been used to frame each of the large picture-windows on the front elevation. Decorative concrete blocks — which can be painted to either match or contrast with the colors selected for the house — have been specified for the large planter at the front of the living-dining room. These same blocks have been used as a fence at the front of the bedroom wing.

The master bedroom has its own private three-quarter bath while the main family bath has been placed near the other two bedrooms. Pullman lavatories have been included in both baths and a shower has been placed over the tub of the main bath.

The living and dining rooms have been combined to form a rather large room for this 1957 square foot home. Family meals can be served at the eating bar on the partial wall separating the family room and kitchen.

For easy access to outdoor living, large sliding doors open from the family room to the patio. The service area provides space for a water heater, broom closet, washer and dryer. If preferred, a laundry tray may be substituted for the dryer.

Complete plans for a detached double garage are furnished with each plan order received for this home.

Complete working drawing of the above plan can be obtained at a cost of \$7.50 for the first set and \$5 for each additional set, when ordered at the same time. This plan will be available for a period of four months from this date. Please allow two weeks for delivery. If the above home does not entirely meet with your satisfaction, a new home plan book, Homes for Living, may be purchased for \$1. Send all orders for either plans or books to Hiwatha Estes, P. O. Box 404-T, Northridge, Calif.

Combine a Trip to the Centennial Exposition and See the Big Shrine All-Star Game

Tickets Now On Sale To The SHRINE ALL-STAR FOOTBALL GAME SAT., AUGUST 15

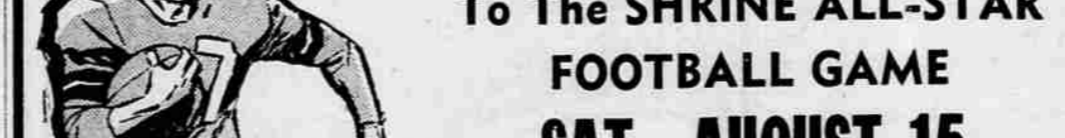
Multnomah Stadium — Portland

Don't miss this big HILLAH TEMPLE-AL KADER TEMPLE game for the benefit of Shriner's Hospital for Crippled Children, Portland Unit. Medford's Coach Fred Spiegelberg will head the State Squad and Medford High's Mike Murray and Gary Winetrot will play. See a great game for a great cause!

Seats Reserved—\$1.00, \$2.00, \$3.00

Now at Barker's and Your Office
Boy, Medford, Eberharts, Ashland

Jackson County Shrine Club



2 Big Bands
14 People

DREAMLAND Admission \$2.00

Weather

Medford and vicinity: Fair with little temperature change through Tuesday. Low tonight 53. High Tuesday 90.

Western Oregon: Fair tonight and Tuesday except night and morning coastal cloudiness. Partly cloudy extreme northern interior. Little change in temperature. Low tonight 48-53. High Tuesday about 75 in north to 85-92 in south interior and 65 on coast.

Northern California: Fair tonight and Tuesday except fog or overcast on coast night and morning hours. Little temperature change.

LOCAL DATA

Temperature: Mean yesterday 73; below normal 1
Record high this date 104 in 1932
Record low this date 44 in 1936
Precipitation: 24 hours to midnight 0. Midnight to 10 a.m. 0
Total this month 0, normal .1
Total since Sept. 1, 12.85 in., 5.11 in. below normal.

Humidity: Lowest yesterday 25%, highest this a.m. 77%

City	High	4:30	24-
		a.m.	hr.
		Low	Precc.
Brookings	79	47	
Grants Pass	90	50	
Klamath Falls	84	52	
Medford	92	53	
Portland	73	51	
Seattle	70	49	
Spokane	83	52	
Yakima	89	48	
Eureka	59	50	
Red Bluff	101	68	
Sacramento	94	59	
San Francisco	65	54	
Los Angeles	91	68	
Phoenix	86	73	
Denver	79	62	
Chicago	79	66	.13
Miami Beach	88	63	
New York	92	63	
Washington, D.C.	81	61	

FIVE-DAY FORECAST (Through Aug. 9):
Western Oregon—Western Washington averaging much below normal with maximums mostly 66 to 68 and western Oregon slightly below normal with highs 75-85 except 60-70 on coast. Minimums 45-55. A few showery periods, occurring mostly after Wednesday.

Northern California — No precipitation except possibly a few showers near Oregon border. Temperatures slightly below normal inland. Near normal on coast.

First bricks were made in the U.S. in Baltimore in 1827. Before that bricks for construction of furnaces and other purposes had been imported, mostly from England.

"A" ACTION

2 LITHIA DRIVE-IN THEATRE

HITS!

Susan HAYWARD
Robert MITCHELL

THE LUSTY MEN

Randolph SCOTT

RAGE at DAWN

POWERS - TUCKER - NAISH

TECHNICOLOR

5:30 p.m. till 12:00 Weekdays
Sundays 4 p.m. to 11 p.m.

CANDLE ROOM

Charcoal Broiled LOBSTER TAILS

An especially good place to eat if dieting!

HOTEL MEDFORD