

NERVOUS HALF-HOUR—Two workmen hung on for their lives when this scaffold went haywire 17 stories above the street on the side of the new Kaiser Building in Oakland, Calif. The two men, Fred Turney of San Leandro and Ted Johnson of Oakland, were rescued after a nervous half-hour during which a major traffic jam developed on surrounding streets. After finally reaching the ground, both men announced that they would go up again without hesitation.

Central Point-Westside 4-H Pre-Fair Winners Announced

About 150 4-H'ers from Jackson county participated in the Central Point-Westside pre-fair held at the county fairgrounds in Medford July 25.

Judges gave 4-H'ers experience in showmanship, judging and identification contests as they prepared themselves for competition at the county fair.

Judges Bill McFarlane, Bill Bigham, Eddie Meeker and Sam James found competition keen as they placed the club members in their showmanship classes. Results of the showmanship, judging and identification contests were as follows:

Livestock Judging Contest: 1. Bill Hubbard, Antelope; 2. Marvin Terry, Westside; 3. Kathy Zapell, Talent; 4. Linda Gibson, Westside; 5. Georgia Hubbard, Antelope; 6. Carolyn Sidener, Central Point; 7. John Fisher, Westside; 8. Judy Bagley, Talent; 9. Russell Frink, Central Point; 10. Nikki Hammond, Central Point.

Senior beef showmanship: 1. Carol von der Hellen, Central Point; 2. Marilyn Watson, Central Point; 3. Judy Bradshaw, Antelope; 4. Patsy Charley, Central Point; 5. Ronnie Anderson, Antelope; 6. Georgia Hubbard, Antelope; 7. Nikki Hammond, Central Point; 8. Carolyn Sidener, Central Point; 9. Jo Anna Malloroy, Antelope; 10. Charlotte Bush, Antelope; 11. Betty Ann Higday, Antelope; 12. Bill Anhorn, Central Point; 13. Jeff

Anhorn, Central Point; 14. Steve Stewart, Siskiyou.

Intermediate beef showmanship: 1. Ricky Anderson, Antelope; 2. Jon Jennings, Central Point; 3. Chip Buffington, Phoenix; 4. Jack Peek, Central Point; 5. Rocky Terry, Westside; 6. Mike Charley, Central Point; 7. Kay Stephenson, Reese Creek; 8. Hugh Charley, Central Point; 9. Linda Gibson, Westside; 10. Mike Reid, Antelope; 11. Larry Toner, Central Point; 12. Spence Buffington, Phoenix; 13. Donald Fichtner, Central Point.

Beginning beef showmanship: 1. Jill Peek, Central Point; 2. Laqueta Stephenson, Reese Creek; 3. Donna Hammond, Central Point; 4. Clint Gibson, Westside; 5. Cynthia Charley, Central Point; 6. Sam James, Talent; 7. Tommie Michael, Central Point.

Senior sheep showmanship: 1. Craig Wright, Westside; 2. Ron Whillock, Phoenix; 3. Linda Cornutt, Gold Hill; 4. Diane Barton, California.

Intermediate sheep showmanship: 1. Ross Conger, Westside; 2. Carol Foote, Central Point; 3. Carolyn Sidener, Central Point; 4. Clint Gibson, Westside; 5. Elsie Mae Deter, Ruch; 6. Carol Deter, Ruch.

Intermediate sheep showmanship: 1. Vicki Caldwell, Westside; 2. Madge Barker, Ruch; 3. Kathy Zapell, Phoenix; 4. Martha Humphrey, Westside; 5. Sue Cornutt, Gold Hill.

Beginner sheep showmanship: 1. Jan Kain, Westside; 2. Billy Bagley, Talent; 3. Sam James, Phoenix; 4. Laqueta Stephenson, Reese Creek; 5. Carol Clark, Talent; 6. Ellen Livingston, Gold Hill.

Intermediate sheep showmanship: 1. Mary Ann Cantrell, Ruch; 2. Jerry Moore, Reese Creek; 3. Dennis Cornutt, Gold Hill; 4. Richard Botzger, Ruch; 5. Greg Lathrop, Central Point; 6. Marilyn Lathrop, Central Point; 7. Craig Lathrop, Central Point; 8. Martha Whillock, Phoenix.

Senior swine showmanship: 1. Bill Hubbard, Antelope; 2. Steve Stewart, Siskiyou; 3. Karen Josy, Antelope; 4. Lynn Merriman, Siskiyou.

Intermediate swine showmanship: 1. Elaine Young, Central Point; 2. Louie Barker, Ruch; 3. Russell Frink, Central Point; 4. Don Herzig, Central Point; 5. Judy Frink, Central Point; 6. Sally Middleton, Central Point; 7. Cathy Legler, Central Point.

Intermediate swine showmanship: 1. Dennis Cornutt, Gold Hill; 2. Grant Mallory, Central Point; 3. Carol Foote, Central Point.

Beginning swine showmanship: 1. David Bailey, Central Point; 2. John Swartzfager, Central Point; 3. Bobby Hubbard, Antelope; 4. Don Stewart, Central Point; 5. Sue Cornutt, Gold Hill; 6. Louise Herzog, Central Point; 7. Leah Mae Deter, Ruch; 8. Tracy Legler, Central Point.

Senior dairy showmanship: 1. Georgia Hubbard, Antelope; 2. Sandy Higginbotham, Central Point; 3. Karen Josy, Antelope; 4. Carolyn Tiess, Talent; 5. Bill Hubbard, Antelope; 6. Sue Higginbotham, Central Point; 7. Judy Bradshaw, Antelope; 8. Daryl Zapell, Talent; 9. Linda Cornutt, Rogue River; 10. Cecelia Fichtner, Central Point; 11. Sally Bailey, Central Point.

1st Intermediate dairy showmanship: 1. Dennis Cornutt, Rogue River; 2. Jerry Moore, Reese Creek; 3. Carol Foote, Central Point; 4. Marilyn Lathrop, Gregory rd. Livestock; 5. Margaret Goodwin, Griffin Creek; 6. Bobby Hubbard, Antelope; 7. Greg Lathrop, Gregory rd. Livestock.

2nd Intermediate dairy showmanship: 1. Ricky Anderson, Antelope; 2. Kathy Zapell, Talent; 3. Kay Stephenson, Reese Creek; 4. Marthanne Goodwin, Griffin Creek; 5. Mary Ann Cantrell, Ruch; 6. Donna Geren, Antelope; 7. Paulette Anderson, Antelope; 8. Peppy Clark, Griffin Creek; 9. Alan Jones, Rogue River; 10. Bill Ullom, Central Point; 11. Wayne Debrick, Central Point; 12. Craig Lathrop, Gregory rd.; 13. Steve Clark, Griffin Creek; 14. Cathy Legler, Gregory rd.

Beginning dairy showmanship: 1. Laqueta Stephenson, Reese Creek; 2. Tim Higginbotham, Central Point; 3. Richard Botzger, Ruch; 4. Russell Fields, Griffin Creek.

Senior beef fitting: 1. Marilyn Watson, Central Point; 2. Carol von der Hellen, Central Point; 3. Patsy Charley, Central Point; 4. Carolyn Sidener, Central Point; 5. Roxy Terry, Westside; 6. Nikki Hammond, Central Point; 7. Larry Toner, Central Point.

Intermediate beef fitting: 1. Mike Charley, Central Point; 2. Linda Gibson, Westside; 3. Jon Jennings, Central Point; 4. Spencer Buffington, Phoenix; 5. Jack Peek, Central Point; 6. Hugh Charley, Central Point; 7. Lloyd Toner, Central Point; 8. Donald Fichtner, Central Point.

Beginning beef fitting: 1. Jill Peek, Central Point; 2. Clint Gibson, Westside; 3. Donna Hammond, Central Point; 4. Dick Field, Westside; 5. Cynthia Charley, Central Point.

Rabbit senior showmanship: 1. Randy Bradshaw, Peter Rabbit Missiles; 2. Daryl Zapell, Sam's Thumpers; 3. Larry Sorum, Southwest Rabbit Club.

Rabbit intermediate showmanship: 1. Karen Aldridge, Westside; 2. Nancy Day, Sam's Thumpers; 3. John Bradshaw, Peter Rabbit Missiles; 4. Sandra Beasley, Westside Rabbits; 5. Woody Newman, Howard Feeders.

Beginning rabbit showmanship: 1. Dwight Harsh, Peter Rabbit Missiles; 2. Tommy Michael, Peter Rabbit Missiles; 3. Phillip Bradshaw, Peter Rabbit Missiles; 4. Kathy Carlson, Howard Feeders; 5. Sheila Beasley, Westside Rabbits.

Rabbit judging contest: 1. Nancy Day, Talent; 2. Dwight Harsh, Central Point; 3. Daryl Zapell, Talent; 4. Randy Bradshaw, Griffin Creek; 5. Phillip Bradshaw, Table Rock.

Forestry identification contest: 1. Alison Pinkham, Central Point; 2. Wallace Skyrman, Central Point; 3. Clifford Pinkham, Central Point; 4. Bill Anhorn, Central Point; 5. Sam James, Talent.



IMPATIENT—James Score was watching a girlie show at Menominee, Wisc., when he apparently lost control, ran up on the stage and started pulling clothes off the stripper. The stripper's husband, not being very understanding, hit Score four times on the head with the flat of an axe. Score's head needed eight stitches, and both he and the husband were arrested.

House Committee Approves '21' Funds

Washington—UPI—The House Space committee Tuesday approved 13-2 a bill to authorize a \$12,500,000 federal contribution to the "Century 21" International Exposition scheduled for Seattle in 1961-62.

The committee attached an amendment to give the federal government some property rights on land which will hold a federally-built 5 million dollar science building at the fair. Seattle would give or lease the land to the government after the exposition ends.

Meanwhile, the Senate Foreign Relations committee held a hearing on similar bills. Sens. Bourke B. Hickenlooper (R-Iowa) and Frank J. Lausche (D-Ohio) would make the land an outright gift to the government.

Franklin G. Floete, administrator of the General Services Administration, told the Senate group that "every effort" would be made to insure that the building would have some future use.

Total cost of the exposition, in which 80 nations are expected to participate, is 50 million dollars. Seattle and Washington state already have raised 15 million dollars for the project.

Commercial nickel produced as cathodes in electrolytic refining is 99.9 per cent pure nickel with a fractional part of cobalt included.

Remote-Control Radio Caddie Developed

Tokyo, Japan — (Science Service)—A remote-control radio golf caddie that looks like a baby carriage has been built here by the Kodan Seisakusho company.

The caddie operates with a portable transmitter that has five buttons to control four directional movements and stopping. Equipped with a caterpillar, the caddie has a device on its front and rear bumpers to stop it automatically when it hits an obstruction.

JELLIED FRESH FRUIT FOR SHORTCAKE

MADE WITH M. C. P. "LOW SUGAR" PECTIN
Jellied Fresh Fruits Will Not Soak Into Shortcake
SAVE THIS!...One Recipe for All Fruits Without Cooking

PREPARATION OF FRUIT: Wash thoroughly. Hull and crush berries. Grind tree fruits.

1. Measure 2 cups crushed or ground fruit and 1 cup M.C.P. "Low Sugar" Liquid Pectin into kettle. Mix well.
2. Add 2 cups sugar; blend mixture thoroughly to dissolve sugar.
3. Some tart fruits, such as Red Raspberries and Loganberries, may be tart enough to jell the fruit, but other fruits will need lemon juice. The amount of lemon juice to add ranges from ¼ cup to ½ cup, depending upon the kind of fruit being used.
4. First, try adding ¼ cup lemon juice, mix well. If texture and tartness suit you, do not add more lemon juice. If jellied fruit is not firm enough, then add ¼ cup more lemon juice; but no fruit will need more than ½ cup lemon juice for this basic recipe.
5. The fruit will jell immediately when the proper amount of lemon juice is added and it is then ready for use on shortcake, or if you want to keep it for future use, it will keep for weeks stored in refrigerator same as milk.

"Jellied Fresh Fruits" can be frozen in regular freezing containers for long storage. When thawed out, jellied fruit will retain its perfect texture and fresh fruit flavor.

The above recipe will make 2½ lbs. of "Jellied Fresh Fruit." This recipe may be doubled, tripled, etc., by multiplying all the ingredients by the same number.

Get M.C.P. "Low Sugar" Pectin at your grocers now.

OREGON FOOD STORES

OPEN 9 A.M. to 9 P.M. — 7 DAYS A WEEK
Items listed below good thru Sunday
1475 Siskiyou Blvd. — ASHLAND

SWIFT'S SWEET RASHER

BACON 39¢ lb.

SWIFT'S — OVEN-READY STUFFED

TURKEY 43¢ lb.
6-14-LB. AVERAGE

GRAPES Seedles, Cardinal Rifers, Lady Fingers, Muscats 2 lbs. for 29¢

LOCAL APRICOTS Last of Season 18 to 20- \$1.79 lb. Lug

SLICING TOMATOES Large, ripe 2 lbs. for 29¢

● WE GIVE YOU GREEN STAMPS ●

Cottage Cheese Shurfresh pt. 29¢

Baby Food Gerbers Strained 12/100

Crescent Flour by General Mills 10 lb. bag 79¢

Eggs AA Small 4 doz. 100

Dog Food Marco, No. 1 Tin 15/100

Snowdrift Shortening 3 lb. tin 59¢

Folgers Coffee 1 lb. tin 69¢

Tuna Del Monte — ½'s Chunk 4/100

Prune Juice Del Monte qt. 39¢

Peaches Del Monte, Freestone Halves—2½ 3/100

Peaches Del Monte, Freestone Halves—303 5/100

Fruit Cocktail Del Monte—303 4/100

Cream Style Corn, Del Monte—303 5/100

Whole Kernel Corn Del Monte—303 5/100

Peas Del Monte—303 6/100

Peas Del Monte Seasoned—303 5/100

Tomatoes Del Monte, Stewed and Solid Pack—303 5/100

Tomato Sauce Del Monte—No. 300 7/100

Pickles Del Monte, Whole, Sweet—24-oz. 2/100

OPEN 9 TO 9 — SEVEN DAYS A WEEK
S&H Green Stamps Prices Good Through Sunday

S&H GREEN STAMPS

True Cash Value Shows Increase

Salem—UPI—The true cash value of utility property in Oregon this year shows an increase in every county except Jefferson, the State Tax commission has reported.

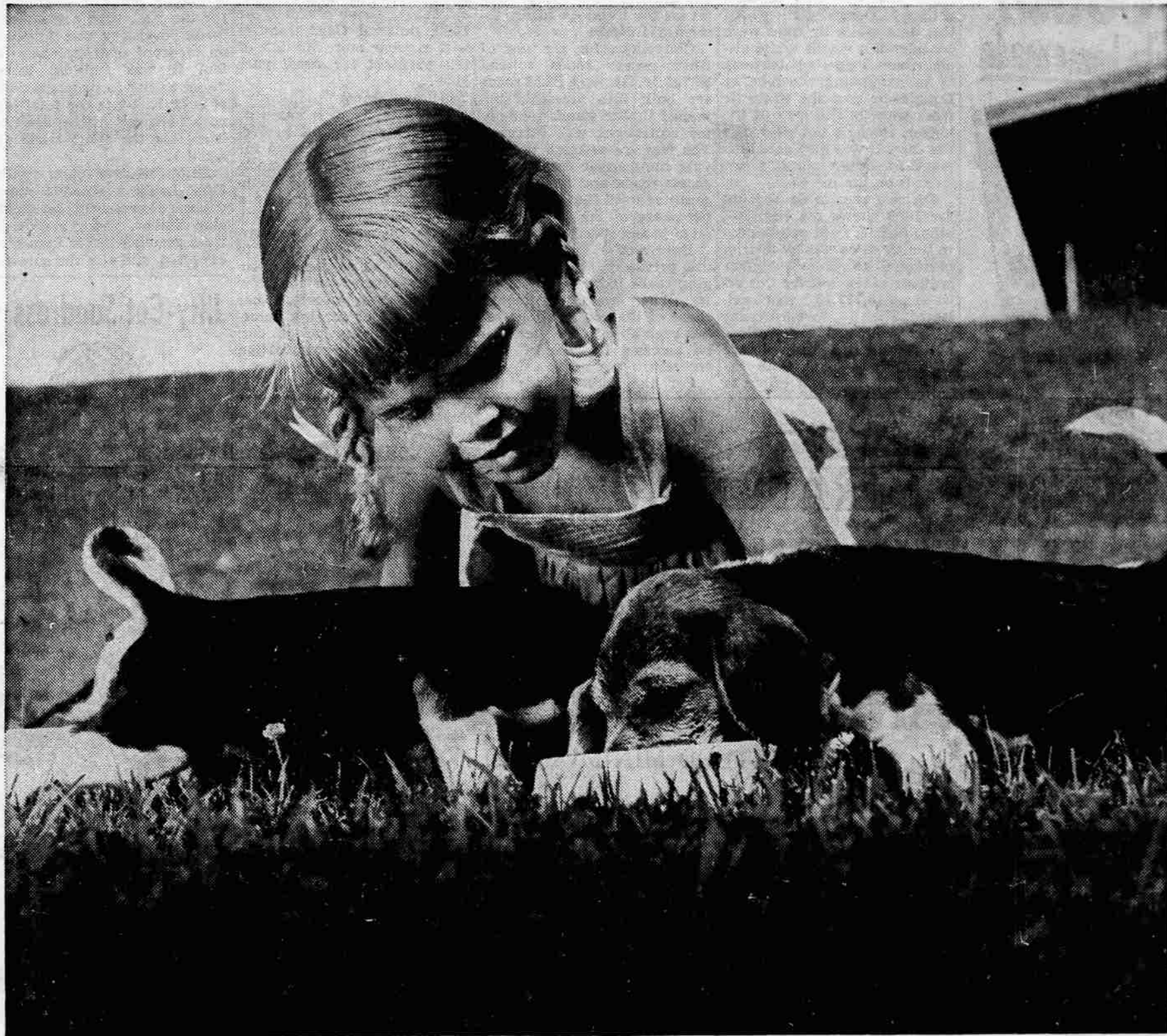
State law requires the Commission to determine the value of such property for tax purposes, but collections are made by the individual counties.

The Commission first establishes the true cash value of the property, then assigns a ratio for each county in order to compute the assessed value on which the tax is levied.

True cash values of utility property this year shows a 10 per cent increase over 1958. However, the assessed value shows a 32 per cent drop. This is due mainly to the assigned ratio of Multnomah county being reduced from 117 per cent to 50 per cent.

Comparison of assessed values of 1959 and 1958 is difficult because of the changes in assessors' ratios in many counties and the continuing equalization program in 1951, the Commission said.

Important increases have occurred in Baker, Clackamas and Klamath counties where additional hydroelectric facilities have been completed or are under construction. Other increases in Curry, Lincoln and Wheeler counties are due to telephone plant expansion. Large increases in Washington and Yamhill are due to electric and telephone plant additions. Jefferson, the only county showing a decrease in utility true cash value, reached that status when one water company was reclassified as tax exempt.



A new kind of dog food makes dogs eager eaters

A full course dog dinner complete with real meat meal. Just moisten and serve!

FORM! Purina Dog Chow looks entirely different from any other dog food. Won't mush down in bowl—stays firm and appetizing for eager eating.

NEW TASTE! Purina Dog Chow is irresistible with that deep-down satisfying flavor of real meat meal. Get a package today—at grocers' and Purina feed stores.

NEW NUTRITION! 43 vital nutrients dogs need—better daily nutrition than most humans get! The flavors dogs like, too—a full course dog dinner.



Purina Dog Chow

NOW ON SALE AT GROCERS' AND PURINA FEED STORES