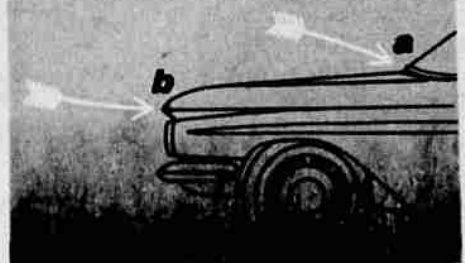


SHOCK-CUSHIONED EASY-RATIO STEERING!

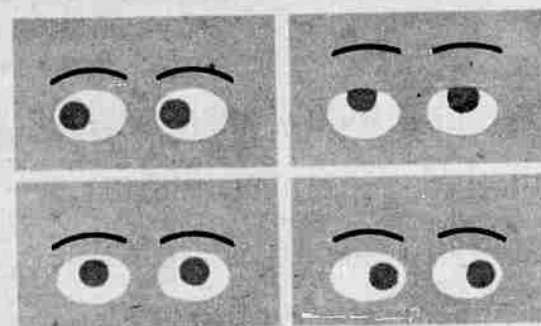
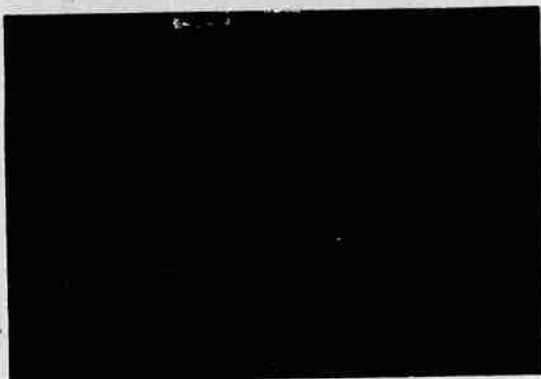
Next thing to power steering for smooth, effortless handling.

Up away from road fumes COWL-LEVEL INTAKES (a) keep your passengers comfortable; FRONT AIR SCOOPS (b) keep your carburetor air cooler.

CLEAN AIR



STURDINESS AND STYLE OF BODY BY FISHER
Chevy's Slimline design begins with solid ideas about beauty.



VAST NEW VISIBILITY
Areas have been expanded up to 50% with Safety Plate Glass all around.



more hat room



more shoulder room

more elbow room

more hip room

and even more room for feet

more room for feet

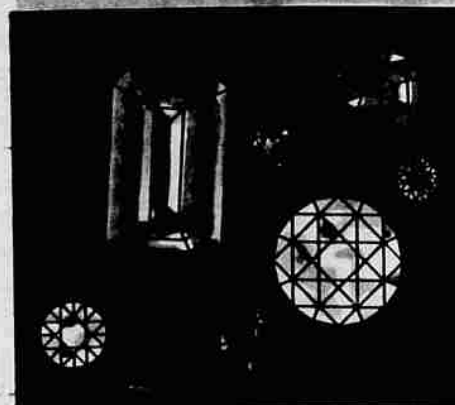
more room for feet

more room for feet



NO WAX

Just a bath will keep your new Chevrolet sparkling and beautiful. Its durable acrylic lacquer finish, offered on no other low-priced car, eliminates all waxing and polishing for up to 3 years.



MORE PEOPLE LOVE CHEVIES



The best seller for ♥♥♥ the best of reasons — a lot of car at a low price!

TURBOGLIDE — smoothest, quietest automatic transmission — or trustier than ever **POWERGLIDE**



stylish rear deck holds more luggage

FINE FABRICS
Durable, color-keyed upholstery, carefully tailored snug to the windows.

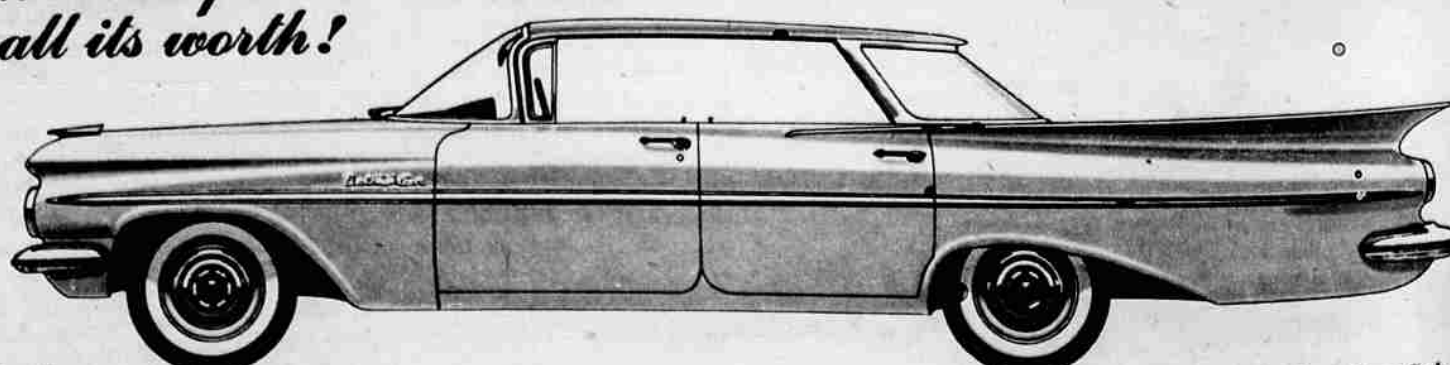


the car that's wanted for all its worth!

Chevrolet's the only car in its field with satin-smooth, riveted-to-the-road Full Coil suspension. Or, for a ride that rivals the costliest cars, you can have gentler-than-ever Level Air Ride.*

REMARKABLY SMOOTH FULL COIL SUSPENSION

*extra-cost option



See your local authorized Chevrolet dealer

Bel Air 4-Door Sedan