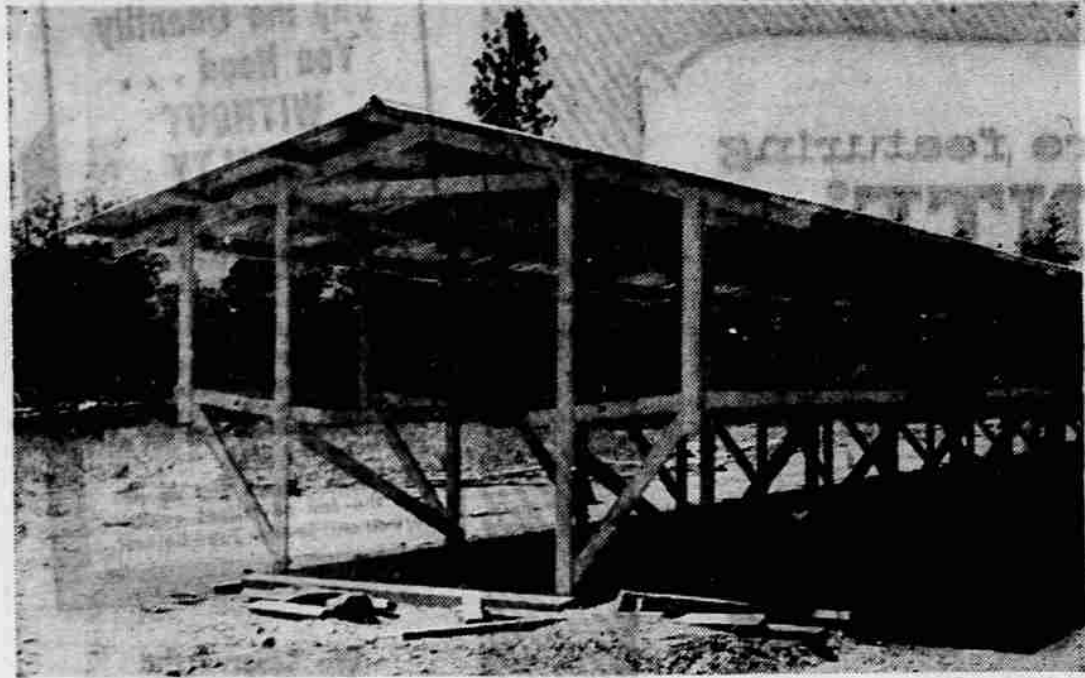


Farm and Garden



NEW HEN HOUSE—This is one of the new hen houses being constructed on the Elmer Korner ranch in Sams Valley. Korner plans to expand his flock from 4,000 layers to 7,200. His egg producers are of the Demier strain of White Leghorn. Like many egg producers who plan to stay in the business, Korner emphasizes quality for higher sales.

Valley Egg Producer Views Egg Market With Optimism

By JOE G. COWLEY
Mail Tribune Farm Editor

"Egg prices can't go any lower so they have to go up!" Elmer Korner, Sams Valley egg producer said Tuesday. He and his family are backing an optimistic viewpoint on the egg price outlook. Elmer Korner and his wife plan to house 7,200 hens in the near future. They now have 4,000 egg layers of the Demier strain of White Leghorn. Their long, open steel roofed, wood frame cage sheds could house 4,800 hens.

Not only are the Korners planning for expansion but their son plans to go into the business at a time when many people are leaving it due to low egg prices. Generally, Pacific Northwest egg producers are selling eggs for 3 to 4 cents a dozen less than they cost to produce.

Designed For Efficiency
Everything on the Korner chicken ranch is designed for maximum production at a minimum of labor—from the bulk feed tanks, to the cage system of chicken housing, to the operation of the egg room. The Korners clean 2,500 eggs a day and candle and grade at the same rate. Following the cleaning the eggs are placed in the cooler room overnight to ensure their freshness then candled and graded the next day.

Automation? No! Korner emphasized. With 100,000 birds it might pay. His hen houses are designed to use the automatic system complete with moving belts to pick up the eggs as in the automatic system of production. However, Korner believes this would make him too big. He likes to know everything that is going on in the hen house. An owners and operator loses that close personal con-

tact when an operation becomes too big, Korner and his wife explained. Then lots of things go wrong. The birds, naturally skittish, aren't used to having a human around, for instance. And Korner cited the case of a relative operating a huge chicken ranch down south. His newly hired foreman mistakenly sold pullets for cull hens. A substantial financial loss resulted.

Korner's operation is different from the standard egg operation where the chickens nest on the floor. As mentioned before the hens are kept in cages measuring about 3 by 6 feet, according to inside dimensions, and about 30 birds to a cage when housed.

The bottoms of the wire cages are slanted so the eggs roll down to a long trough in the front. Their droppings fall to litter underneath the raised cages. Korner merely runs a tractor along with an especially designed blade and scrapes up the chicken droppings. Sold as fertilizer this more than pays for cost of operating the tractor. This cleaning operation takes about one day whereas it would take much longer with hard labor. The chicken houses are also sprayed periodically to kill flies, lice and mites.

Backing up the henhouse operation are reserves of 1,200 young chickens kept in the brooder house. When they are three months old they are moved as a unit to a chicken house where they start producing eggs. The Korners will move in another 1,200 chicks into the brooder house in July. The Korners don't keep any hens longer than one year at lay. The drop in egg production after the moulting doesn't make it practical. The old hens are sold to local pro-



CANDLES AND GRADES—Mrs. Elmer Korner, Sams Valley, is shown candling and grading eggs on the large automatic grading machine. The eggs roll over a light which illuminates the eggs for a check on any possible defects. Then they move through the machine which rolls them down into sections for the various sizes. The Korners estimate that they clean 2,500 eggs a day and candle and grade the same number a day after they have been kept in the cool room overnight.

WIPE OUT QUACK WITH DOWPON*

Keep grass from creeping into your best land. Simply sprinkle or spray DOWPON on your thickest grass and watch it wither away. Kills roots too!

FREE SAMPLE AVAILABLE
COVERS 225 SQ. FT.



MEDFORD FEED & SEED CO.

330 North Fir
Medford, Oregon

DEALERS FOR DOW WEED, GRASS, AND BRUSH KILLERS

4 MAIL TRIBUNE, Medford, Or.
Thursday, June 25, 1959

Tenth of Farmers Of Local Area Work with ACP

Over one-tenth of Jackson county's farmers joined hands with the government last year to carry out needed conservation practices on their farms.

The annual report from the local county agricultural stabilization and conservation (ASC) office shows that on 174 farms in the county soil or water conservation practices were carried out under agricultural conservation program (ACP) in 1958.

Under the ACP, a farmer and the government share the cost of needed conservation work, the report pointed out. Last year, Jackson county farmers put up over \$42,000 in carrying out approved conservation practices on around 43,000 acres.

Uncle Sam then matched these payments to help farmers conserve valuable croplands, woodlots, grazing areas, orchards, and agricultural water for use by future generations.

A total of 17 different conservation practices were used by Jackson county farmers under the 1958 ACP, the report indicated. Practices most popular with local farmers last year included land leveling, reorganization of irrigation systems, building irrigation ditches, and tilling for drainage.

Pool Agreements
Through pooling agreements allowed under the ACP, some of the county's farmers banded together to do conservation jobs they couldn't carry out individually. In five pooling agreements 33 Jackson county farmers were able to reorganize irrigation systems and line irrigation ditches.

ACP assistance is made available to farmers to help them carry out conservation practices they wouldn't be able to carry out themselves. During 1958 Jackson county farmers paid 65 per cent and the government paid 35 per cent of the cost—with the government's share an indication of the interest of all the nation's people in protecting and conserving our farm and ranch lands to insure future supplies of agricultural products.

Every farmer with a conservation problem is eligible to apply for ACP aid. More information on the program is available at the Jackson county ASC office in the Court House Annex, Medford.

Bee Owners Urged To Register Bees

Salem-Bee owners in this county who have not registered their colonies for this year may do so by contacting the local deputy state bee inspector, Samuel D. Dawson, box 172, Jacksonville, who is working in Jackson and Josephine counties this summer. Or they may contact the state department of agriculture headquarters at Salem.

The objective of this inspection program is protection of the Oregon bee industry against American foul brood, a highly contagious bacterial disease which destroys bees. The bacteria causing this disease are hard to destroy and for that reason any colonies infected with American foul brood are burned and buried below the plow line.

Without this control measure, which is written into the state apiculture law, Oregon would have a greatly reduced bee population—much to the detriment of thousands of acres of crops primarily dependent upon the bee for pollination.

The Oregon law requires all beekeepers to register their bees, whether they have one colony or 500 colonies. The annual registration fee is \$1 which covers up to six colonies, and 15 cents for each colony over six.

Last year 27,254 colonies of bees were registered by 1,361 beekeepers in Oregon, according to Kenneth E. Goeden, Salem, who supervises this program for the department.

Should be made in early morning or late evening to protect pollinators.

Three different materials are recommended for lygus bug control—at least 2 pounds of actual DDT per acre or 3 pounds of actual toxaphene per acre or one-half pound of actual dieldrin per acre if difficulty has been experienced with control of lygus with DDT and toxaphene and if applied before the alfalfa is in bloom. Toxaphene is least harmful of the three to pollinators and will also control grasshoppers.

Foliage treated with DDT, toxaphene or dieldrin must not be fed to dairy animals or animals being furnished for slaughter, the agent cautions.

--- CHIT CHAT ---

By JOE COWLEY
Mail Tribune Farm Editor

Next time you eat breakfast why not have something else beside the usual "coffee and growl"?

How about ham and eggs? And just before you prepare that egg for eating take a good look at it. Are you getting a top quality egg? If you don't know, then what's the use of the local egg producers taking all the trouble to carefully wash, candle and grade their eggs?

Since many egg producers are aiming at a quality market they want you to know what makes a good egg. A man who knows, an egg-producer, tells us that an egg should be clean, of good shell quality—no cracks, checks or any other deformities. Hold the egg up to the light to see if the air cell at the large end of the egg is small or large. If it is comparatively large then you are getting an older egg. And look to see if the eggs are in a cool or refrigerated case in the store when you buy.

In color, the white eggs should be chalk white and the brown ones a uniform dark brown. Other things to consider are whether the air cell is movable, meat spots, blood spots, amount of thick and thin albumen and condition of the yolk. The albumen should be firm and the yolk dimly visible. Eggs must be free from meat or blood spots and germ development. A blood spot will show as a dark or foreign substance in the albumen.

Good quality eggs will have a firm, thick albumen that is compact. The yolk will stand up above the white and be round in appearance.

Invitations will go out soon to commercial egg producers in Jackson county and Klamath Falls to attend an organizational meeting of an area egg producers association. This will be modeled on the Emerald Empire Egg Producers' association of the Lane county area, we understand.

Some of the main objectives will be to serve as a contact agency between the producers and market representatives, help control and eradicate disease, improve the quality of egg, breeding stock, chicken, and improve the quality, efficiency, distribution and consumption of Oregon poultry products, to collect and disseminate news of the poultry industry, and to coordinate the activities of the hatcherymen, poultry producers and allied industry.

Farmers need a bargaining agency which will represent them to the wholesalers and retailers. The fact that they are learning that is shown by the formation of a milk producers' bargaining agency for dairy farmers of Oregon, southwest Washington and northern California, by various commodity promotion groups and now by plans for area egg producer groups in the state. On the national level the National Egg Council of the American Poultry and Hatchery federation will hold its first annual meeting in St. Louis, Mo., July 23.

Supply and demand normally set the price. According to June 22 reports from Corvallis supplies in the poultry business are declining which should give a boost to the much needed price rises.

There are these indicators: Nationally, commercial hatcheries produced 10 per cent fewer chicks in May than a year earlier. Compared to last year, broiler-type chicks produced were down 4 per cent. Egg-type chicks produced dropped 20 per cent. Smaller June hatches than a year ago are predicted. Hatchery output of egg-type chicks nationally during the period of January through May, 1959 is down 4 per cent from a year ago. By the end of May last year, three-fourths of the 1958 egg-type hatch had been completed.

Also, at Portland, producer prices on Grade Double A Large advanced 2 cents during the past two weeks. Grade A Large eggs remained steady. Grade Double A Mediums advanced one cent a dozen. Grade Double A Smalls also showed strength, advancing 2 cents a dozen during the past two weeks. This information comes from Charles M. Fischer, OSC poultry marketing specialist.

Another lamb pool for this area is scheduled for Wednesday, July 1. Those producers who want to join this shipment should contact Earle Jossy, Jackson county extension agent, at the courthouse.

This could be an easy prediction—but we figure the price of milk in this area will also increase in about a month to correspond to the recent price rise in the Portland area. Milk producers, for a change, will share in this cent-a-quart price rise. And it's needed! The experts figure that the cost of producing milk in the Rogue River valley has gone up 11 per cent higher in May than for the same period a year ago.

Factors causing that cost rise are price of alfalfa hay is up 60 per cent, labor is up 4 per cent, taxation is up 8 per cent (overall taxes). The startling thing, according to the dairy experts, is that replacements are up 23 1/3 per cent than they were last year. This includes machinery and replacements of dairy stock. The cost of dairy concentrates is up, also. The bad dry pasture situation hasn't helped the cost-price picture for the dairymen, either.

A dairyman who recently made a general tour of the state reports that the hay situation is tight. In the Hermiston area, for instance, the hay crop is short. Both quality and quantity there is usually good. Price contracted for July delivery was \$25 a ton in the field against \$18 or \$19 a ton last year. The current price levels in all areas this farmer visited last month are from \$6 to \$8 above last year.

Farmers in all of the southwest areas are watching carefully the water supplies which in many areas over the state are less than sufficient. An alarming thing in the dairy business is that most hay crops were cut much later than in the last 10 years—it was about two weeks late this year. This means that later on the second cutting will be delayed and in a great many places there will be no third cutting at all.

Anyway, while you're stewing over this picture—have some eggs and bacon or ham for breakfast with a tall glass of milk. It's good for you!

Seed Fields Get Close Inspection

One phase of the seed certification program in Jackson county has been completed according to Gene Winters, Jackson county extension agent.

Fields of seedling alfalfa, ladino clover, lotus, wheat, and grasses eligible to produce registered or certified seed were recently inspected by Oregon State College Extension seed certification specialist.

Ten county farmers made application for seedling inspection of 123 acres of Tallent and 20 acres of Lahontan alfalfa. Three fields inspected have isolation problems. Alfalfa varieties and classes must be specified distances apart to prevent cross pollination. Two growers had 64 acres of ladino clover inspected. One field of granger lotus eligible to produce Foundation seed was examined.

Nearly 150 acres of grain for seed were also inspected. Varieties grown are Merion Kentucky bluegrass, Newport bluegrass, Pennross bentgrass and Pennland Red fescue.

LIME

Right After Hay Cutting, When Ground is Firm, is an Ideal Time to Apply Lime. Call Us for Quotation Delivered and Spread on Your Field.

Phone UL 5-1245
Agricultural Lime Distributing Co.
Gold Hill, Oregon

Observer Notes Fewer Dairymen

By EARLE JOSSY
Jackson County Extension Agent

June is dairy month for fewer and fewer dairymen. There aren't as many of them as there were awhile ago.

At the close of World War II there were 2,400,000 dairies in the United States. Today, more than half of these have quit. Pretty much of this same thing has happened in Oregon and in Jackson County. The best guess of the economists indicate this trend will be continued. Why are dairymen selling their cows?

There are a number of reasons. Most important is the price cost squeeze. The price paid dairymen for milk has not increased for several years—in fact it has been reduced twice in the last year. About 5 per cent each time. A 10 per cent cut in income hurts but at the same time labor costs, higher taxes, and especially higher cost of investment in needed equipment have cut into the margin. In order to have enough money to pay the bills some dairymen are milking more cows. Those who cannot or do not want to increase the size of their herds are selling out. The cow numbers are reduced much less than the number of dairies. The dairies are simply larger and fewer.

Trend Not Undesirable
This trend is not entirely undesirable. It makes practical the use of labor saving, efficient machinery, pipe lines, bulk tanks, efficient milking parlors and is part of the trend toward total bulk handling from the cow to the bottle. On the other end of the business largeness makes practical the use of bulk storage and mechanical feeding of the animals. It makes more efficient use of manpower. Studies show it takes 147 man hours per year to take care of each cow in a ten cow herd while 62 hours will suffice for the cow in a 35 cow herd.

Efficiency in production is extremely important—much more so today than 10 years ago. Dairy markets are constantly threatened with invasion. Not only by fluid milk from other more efficient producing areas (modern tank trucks make hauling great distances practical) but from newly developed products such as instantly reconstituted dried milk, low moisture milk concentrates, and a host of products which are not milk at all but which provide much of the nutrition of milk and compete for the housewife's dollar.

Cost Cuts Important
Bigness in itself does not insure efficiency. Management must make every effort to cut costs and increase income. A poll of successful dairymen reveals that the first and most essential need is to maintain accurate records. Records not only of production but records of costs and returns. Number two is to keep high producing cows. The average cow in the United States produces 6,200 lbs. of milk per year. She provides her owner with a return of \$9 over costs of feed and care. The average cow in the standard dairy herd improvement associations produces

10,000 lbs. of milk per year and returns her owner a profit of \$51 above the cost of her keep. It would take more than five ordinary cows to equal one good producer in net income. The above figures are cited by Ralph E. Hodgson, Agricultural Research Service.

Dairymen in Jackson County are keeping step with these trends. Our neighbors on the dairy farms are keeping more cows. They are becoming more and more efficient—they have to, to stay in business. They and their cows are converting our irrigated pastures which they scatter all through the stores and businesses of Jackson County. June is their month. It's a good time to use more dairy products—the benefits are better health and more financial stability.

Gardening Tips
By DON BERRY
County Extension Agent

JUMPING OAK GALLS
A number of home owners have been concerned with the tiny mustard-seed-like galls which they find on their patios and under their oaks.

These little galls have a tendency to jump like a Mexican jumping bean. This characteristic is imparted in them by a tiny insect which is inside.

As the galls ripen and fall from the undersides of the oak leaves, the larvae throws itself within the gall causing it to jump considerable distances probably in an attempt to find seclusion in a crack or crevice for hibernation. The following spring, tiny black wasps emerge and reinfest the oak leaves in the area. This is a common pest which is occurring in epidemic proportions this year. They work only on oak leaves, and there is no known control for them, but they are seldom considered a serious problem.

There are 54 mountains in Texas with an altitude of more than 6,000 feet.

Smut Controls Told by Agent

By EUGENE WINTERS
County Extension Agent

The unusually heavy infestation of smut in Jackson County barley fields this spring is probably due to last year's weather condition.

Cool wet weather furnished conditions favorable for development of seed infections by loose smut organisms. Most of the seed barley used this year was from the 1958 crop. Smut heads collected from different varieties of barley throughout the county identified by Oregon State College plant pathologists as the species of smut which can be controlled only by the tedious soaking method. In the field spores of this smut infect healthy heads through the flowers and the fungus grows into the young barley kernels.

Since this smut is seed borne, growers need not be concerned about planting barley in fields infected this year if smut free treated seed is used. Volunteer plants may be smutty. Control measures for this disease suggested by the agent are to plant certified seed or seed which is known to have been grown in fields free of loose smut. Seed should be treated to control other loose smuts carried on the seed or under the hull and covered smut.

Control measures for this disease suggested by the agent are to plant certified seed or seed which is known to have been grown in fields free of loose smut. Seed should be treated to control other loose smuts carried on the seed or under the hull and covered smut.

Control measures for this disease suggested by the agent are to plant certified seed or seed which is known to have been grown in fields free of loose smut. Seed should be treated to control other loose smuts carried on the seed or under the hull and covered smut.

HERTZ TRUCK RENTAL

Available at HOPKINS RICHFIELD SERVICE
McAndrews at Court
Phone SP 3-9068

MODERN ARTIFICIAL BREEDING with FROZEN SEMEN
FROM AMERICAN BREEDERS' SERVICE

Proved Dairy Bulls performance tested Beef Bulls.
The finest service we have ever offered at the lowest prices we have ever offered.

SP 2-4093
C. C. Williams
ROGUE VALLEY PROVED SIRE SERVICE

FRUIT GROWERS . . . Rogue River soils are acid!

VIKING SHIP CALCIUM NITRATE helps combat soil acidity . . . supplies beneficial nitrate nitrogen.

Acid soils like those in the Rogue River Valley are low in calcium and subject to water saturation that can cause serious damage to fruit tree roots.

When it comes to protecting trees from the harmful effects of excess acidity, the kind of nitrogen fertilizer you choose can be vitally important.

Viking Ship Calcium Nitrate is the choice of experienced growers because it contains:

20% water-soluble calcium beneficial nitrate nitrogen—that can help reduce excess acidity and improve soil structure for better penetration of water and nutrients.

readily available to tree roots without conversion delay. Nitrate nitrogen is not held in upper soil layers but moves with water to the root zone.

For the nitrate fertilizer that conditions acid soils, call your dealer and order . . .

Viking Ship/Calcium Nitrate
FROM NORWAY

Distributed by WILSON & GEO. MEYER & CO., Portland - San Francisco