

Old Lighthouse Station Burns

Portland—UPI—A fire of undetermined origin leveled an abandoned lighthouse and reporting station at the mouth of the Willamette river Saturday night.

The frame building, a Kelley Point landmark at the confluence of the Willamette and Columbia rivers for 70 years, stood on piling and was abandoned two years ago.

A Sauvie Island farmer, Walter B. O'Neil, reported the fire and said he thought he saw a small boat leave the scene shortly after he noticed the flames. He watched the blaze through binoculars.

The house was last occupied by Mr. and Mrs. Elmer Haugan, who serve with the Willamette river ship reporting service for the Merchants Exchange.

Constructed first as a lighthouse, it was abandoned for that purpose in 1933 and in 1946 was moved to the location at which it burned.

PUTT-PUTT PREVIEW

Anheim, Calif.—UPI—Disneyland provides a pint-sized freeway with putt-putt cars for child drivers. Sunday it had a realistic traffic jam as well. Cars backed up for 100 feet, and the tot drivers grumbled just like their daddies while a disabled car was towed away.

From Holland — a wonderful chocolate drink flavor



Borden's new Instant Dutch

Only drink of its kind with vitamins B₁, B₂, D, Iron!



Borden's new Instant Dutch is the most delicious summer drink ever.

Mixes instantly in HOT or COLD milk!



They'll Do It Every Time



Business Spending Plans Up; New Plants To Be Needed Soon

By ELMER C. WALZER
UPI Financial Editor

New York — (UPI) — Businessmen are increasing their plans which is an accompaniment of rising industrial statistics.

What was over-capacity not long ago is being used now. And new plants are needed not only for current demand but also to fill the needs that will develop in the 1960s when the expected spurt in new families arrives.

Also it's part of industry's fight to keep costs down and fight growing competition.

This expansion program is a big one for all types of business — big and small. The big ones can afford some errors. The small ones seldom can.

With this in mind, the engineering firm of Ford, Bacon & Davis has brought out a study on comparative projections of new plant costs.

Depression Policy Problem

It has been estimated that industry would like to rebuild one-third of its \$300 billion plant. The big obstacle is the Federal Revenue Department's depreciation policy which prevents writing off old plants on the basis of the cost of replacement — costs that have risen sharply with the decline in the dollar.

Despite the depreciation rules, the corporations are going ahead with more and more construction.

There is a tendency toward changes in location of plants, and also toward more automation.

Ford, Bacon & Davis, with years of experience in plant engineering, warns against building a structure that some day will be referred to as "so and so's folly." Don't get the "Taj Mahal complex," it advises.

Business Problems

A company can build itself out of business by over-capacity, use of automation where it isn't feasible, improper location, selection of the wrong type of tooling, and equipment and general layout, the firm indicates.

Then, too, there's the cost of financing which can hack

PRINCETON TRUSTEE

Princeton, N.J.—UPI—Movie Actor James Stewart has been elected an alumni trustee at Princeton University, it was announced today. Stewart received a bachelor's degree in architecture from Princeton in 1932.

down profits and curtail further and necessary expansion.

Noting the current popularity of automation is undeniable, the firm finds it has resulted in situations where it has been over-sold or over-applied.

"Actually," says Ford, Bacon & Davis, "the test of automation, as in the case of process, location, and sizing, is a matter of determining its economic usefulness, basic to which is high sustained volume carrying with it the penalty of inflexibility."

"Failure to evaluate properly the economic factors can result in a technical marvel, but one with unit production costs as high as unit selling prices."

Expansion Advised

There also are the problems of too little space and too much space — also over-design is as great an error as under-design, the firm cautions.

After listing the pitfalls of plant construction, the firm

notes that, taken on balance, new plant activity is much less a matter of pitfalls than a matter of opportunity.

"There are always prospects for real profits through plant development — or at least improvement," the company asserts.

And it concludes: "Change is in the air. Standing still is no answer. If there are opportunities for us, there are similar opportunities for the competition."

Familiarity With Factors

"To stay in the running, investments have to be made. Once made they cannot (in most cases) be wholly retrieved except through the use for which they were designed."

"To be a winner requires familiarity with all pertinent factors, negative as well as positive — with all pertinent methods of evaluation too."

"Hence in advance of commitment, comparative people can do much to reveal the wisest course to follow."



Elmer C. Walzer



LIBEL SUIT—American pianist Liberace (left, smiling) walks into court in London, where he is suing British columnist "Cassandra" for suggesting that Liberace is a homosexual. "Cassandra" is a columnist for the London Daily Mirror, real name William Neil Connor. Man is right is unidentified.

Small Worlds Around Us

By Lynn M. Watkins

The Tree Frog Lives Dangerously

The little guy has suction cups on his toes, dew-absorbers on his stomach; green coloring in his skin pigment, a light in his eye and a song in his heart. For such a little chap, with just three toes on each foot, the tree frog, can accomplish some remarkable stunts. He can calmly hang onto a sheer perpendicular wall. With the highly developed suction cups he adheres to any surface.

He releases them as rapidly, or as slowly as he chooses, or he can just go to sleep and the suction continues without a thought on his part. Having a mind of his own he knows where he is comfortable. Like his frog relatives he gets to where he wants to go by jumping, but unlike his kinsfolk who live in ponds, the tree-frog lives dangerously by leaping from one tree limb to another.

One slip and he crashes; so he doesn't miss very often;

Feeds on Insects

He hides in a crevice, feeds on insects, worms and spiders. He changes his color to correspond with his surroundings. Usually he is a delicate shade of leaf-green, with a white or yellow lateral stripe along his slim, graceful body. His skin is soft, with the texture of velvet, and the shine of finely glazed pottery.

On his little undersides he has a series of fine body pores that possess a blotter-like action, making it possible for him to absorb moisture from any wet surface. Perched on a leaf he can "drink through his stomach and catch flies at the same time."

For the comparatively few people who ever see this Lilliputian frog, there are thousands who are familiar with his shrill call, for it is he who becomes so enthusiastically vocal just before a heavy rain. For this reason he is called the "rain frog." Usually he calls just before the rain begins to fall. It is always the male that does the calling; the little female just sits nearby and enjoys the serenade, while she nonchalantly gobbles down a few bugs.

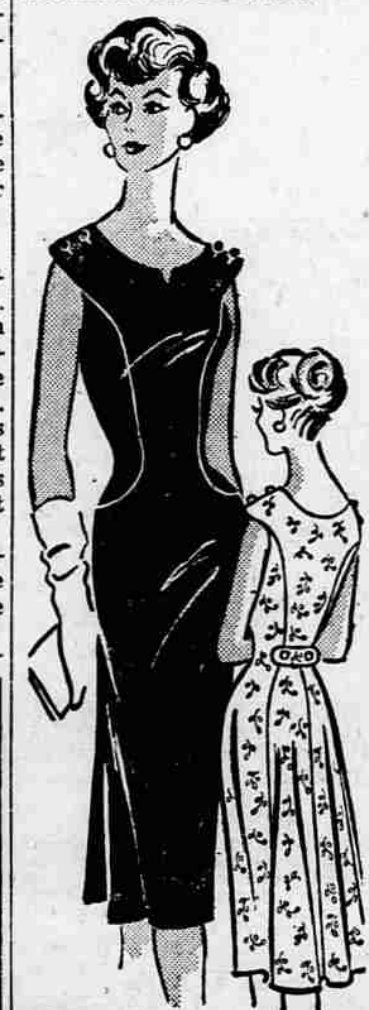
Must Be Concerned

Even she must be deeply concerned at times as she watches her mate. When he becomes vocal he puffs his throat out four or five times its normal size, like a balloon of bubble gum, and looks like he was choking to death.

On a hot summer afternoon when a sudden rain storm comes up every tree frog becomes alert; with the striking of the first drops tree-frog voices fill the air. They were all waiting for the signal; they respond joyously. Should the rain suddenly stop, the tree frogs all fall silent. It almost seems as if the rain and the frog voices are attached to the same lever. If the rain begins again, the chorus again bursts forth; they all almost keep time to the rhythm of the falling drops; there they all are, hilariously "singing in the rain."

(Released by The Register and Tribune Syndicate, 1959)

Romantic Sheath



9069 10-18
by Marian Martin

For the fluid silks of summer — a romantic sheath that curves close to your figure in front, ripples gently in back. Flattering to all figures — smart, too, in cool town cottons. Tomorrow's pattern: Misses' easy topper.

Printed Pattern 9069: Misses' Sizes 10, 12, 14, 16, 18. Size 16 requires 3 1/2 yards 39-inch fabric.

Printed directions on each pattern part. Easier, accurate.

Send THIRTY-FIVE cents (coins) for this pattern — add 10 cents for each pattern for first class mailing. Send to Marian Martin, Medford Mall Tribune, Pattern Dept., 232 West 18th St., New York 11, N.Y. Print plainly NAME, ADDRESS with SIZE and STYLE NUMBER.

JET BEATS ANGELS

Chicago—UPI—Mrs. Lottie Kinchner, 71, said she'd made a reservation for a jet plane flight to the West Coast because: "I thought I'd like to use man-made wings once before I get my own."

DEATH HOUR ADVANCED

Ossining, N.Y.—UPI—The execution hour at Sing Sing—11 a.m., the last 43 years—has been moved up to 10 p.m., it was announced Sunday. Authorities said the new hour would preclude disturbing the governor late at night in an emergency, would be more convenient for witnesses and would enable fuller news coverage of executions.

TUT, TUT ROBIN

Scarcliffe, England—UPI—The sheriff of this Nottinghamshire village is looking for an unknown merry man who has been shattering street lights with a bow and arrow.

A clove tree becomes profitable only after ten years of growth, while a coffee tree produces after four years.

PAINTER DIES

Newton Centre, Mass.—UPI—Portrait painter and artist William C. Loring died Saturday.

We Give GREEN STAMPS CENTRAL REXALL Main and Centre

GOURMET FOODS DINNER FOR 4

For Father's Day

10⁹⁵

It's the most glamorous dinner gift in the world—a complete Gourmet Dinner for Four consisting of these world-famous GOURMET FOODS specialties: Hors d'oeuvres: Spiced Swedish Meatballs, Canape Cuplets filled with Numaki Spread; soup course; Vichyssoise; main course: Copenhagen Ham, Champagne Mustard, Wheat Pilaf; dessert finale: flaming Crepes Suzettes served with Cafe Diable.

PLUS DOZENS of other GOURMET FOODS AT NEW LOW PRICES

Swem's
BOOKS · GIFTS · RECORDS
217 EAST MAIN MEDFORD, OREGON

STAUFFER'S "Magic Couch"

Available in TWO models

"FAMILY DELUXE MODEL"

"PRINCESS MODEL"

Only Stauffer—the complete, original scientific home reducing plan of effortless exercise and calorie reduction—brings you all these advantages...

1. Removes excess weight and inches, improves posture without starvation diet or strenuous exercise.
2. The Stauffer principle has brought new figure beauty to more than 5,000,000 women!
3. Genuine rhythmic oscillatory motion. No vibrators!

SLIM DOWN AT HOME

You can trim inches from tummy, hips, legs with the Stauffer Home Reducing Plan of effortless exercise and calorie reduction. And you can do it at home.

BEWARE of IMITATORS! INSIST on STAUFFER

For More Information and a FREE Demonstration Call:
VIRGINIA WICKERSHAM — Phone SP 2-9260 or SP 3-2366

Flavor-Saver!

Your family will love meals from your

HOME FOOD FREEZER!

because frozen foods preserve the field-fresh taste of fruits and vegetables... the full-flavored deliciousness of all meats and prepared desserts.

YOUR HOME FOOD FREEZER helps save the family budget, too!

FREE... For delicious freezer recipes and complete information on how to save the most with your freezer, write the Cal/Ore Electrical League, Box 231, Medford... and ask for your free copy of Bev Lyons' "FREEZER-LEISURE—Tips on How, What, and When to Freeze."

SEE YOUR CAL/ORE ELECTRICAL LEAGUE DEALER

He will be glad to help you pick the right size freezer for your family and set up your own freezer plan—to give your family the best meals all year 'round—at the lowest prices.

cal/ore Electrical League INC.

LIVE BETTER ELECTRICALLY