

Valley Iron Artisan Among Few in Country

14 MAIL TRIBUNE, Medford, Or.
Sunday, June 7, 1959

Seven from Area Attend Forum of Welfare Groups

Seven area persons attended the 86th annual forum of the National Conference on Social Welfare held in San Francisco May 24 through 29. Among those attending were Miss Cecilia Walker, supervisor of child welfare; Mrs. Beti Gerritsen, Miss Regina Hannon, Mrs. Mildred Grimes, and Miss Agnes White, all with the public welfare department; Mrs. Ruth Walker, on the staff of the juvenile department, and Senior Capt. William Ricken, Salvation Army.

The conference was attended by approximately 5,000 persons from throughout the United States.

Group meetings were held daily from 9 a.m. into the evening which included numerous speakers, films, and panel discussions. Several general sessions were also held.

Speaker Listed
Speaker for a session Friday was Charles I. Schottland, dean of Florence Heller graduate school for advanced studies in social welfare, Brandeis university, Waltham, Mass. Schottland, in 1958, headed an American delegation of officials of the U.S. government which visited Russia and surveyed the social welfare system there.

He spoke on the social welfare in the USSR today, telling of his visit there and mentioned that Russia had a social security program for employed workers similar to the United States.

Also speaking was Judge Donald E. Long of the circuit court in Portland. He was in favor of changing the Oregon juvenile code so the supervision of the dependent child was with the welfare department rather than with the court which serves as legal protection for the child.

Medical Problems
The local welfare workers mentioned that one full day of sessions pertained to medical problems in the handling of welfare cases. Another widely discussed topic pertained to the problems encountered in locating adoptive homes for the hard-to-place child, mainly the delinquent or handicapped.

Among the more than 200 exhibits of particular interest was the use of colored illustrated pamphlets in English and foreign languages.

Social workers from Medford attending the conference paid all of their own expenses, it was reported. The local workers attended as many different sessions as possible so they could exchange information received.

Captain Ricken, commanding officer of the local Corps, was the delegate to the convention from the Oregon Salvation Army Corps. He also attended a pre-conference session held by the Salvation Army for the officers of the United States who were delegates.

The local captain commented on the discussions held regarding the use of religion in social work.

Salem Man Dies Of Crash Injuries

Portland—(UP)—Jeffrey Dennis Elliott, 22, of Salem, died in Providence hospital here Thursday night from injuries suffered in an automobile accident near Dayton May 9.

The car in which Elliott was riding went out of control on a curve, skidded on gravel, hit a mail box post, careened into a ditch and overturned.

Another youth, Craig Fear, 21, of Salem, was less seriously injured and was released over a week ago.

State police said the two were thrown from the car as it overturned.

New Business Hours Listed at Domiciliary

New summer hours for business at the Veterans Administration Domiciliary have been announced by Henry C. Herzog, manager.

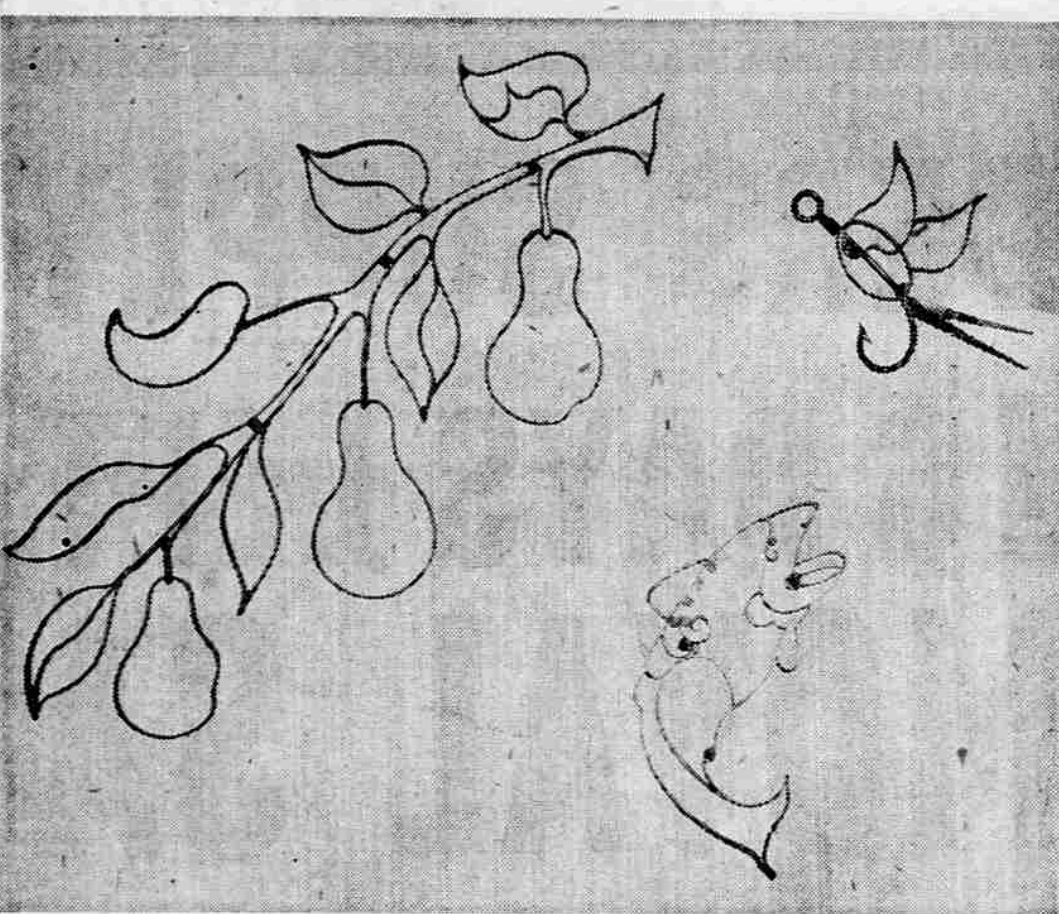
Effective tomorrow, new hours will be from 7:30 a.m. to 4 p.m. to provide a better work relationship with other VA installations on the west coast as well as the VA central and area offices, he said.

The new schedule of hours will continue until Sept. 8, when the former business hours, 8 a.m. to 4:30 p.m. will be resumed, he said.



STARTS SCROLL—Cecil Watson, owner and operator of the Pacific Forge and Iron Works, 3552 South Pacific highway, starts a scroll to be used in an ornamental iron project for a valley resident. The piece of iron to be used is first heated in the forge and once the tip has been hammered flat the starting block is used to form the first half turn in a scroll. The piece of iron, glowing

a bright red, outlines the block in the picture. This is the part of the scroll which tell a person at a glance if it is hand or machine made. With machine a small amount of iron is needed for it to grip so the scroll will not be "true." Watson sometimes shapes flowers or leaves at the tips when starting the scrolls, but it is not in common use today as hand-work is expensive.



WALL DECORATION—Familiar to many valley residents are numerous iron wall designs made by Cecil Watson at the Pacific Forge and Iron Works, 3552 South Pacific highway. The above designs may be seen on a wall in the Rogue room of the Medford hotel. In addition to outline designs similar to the fish and pears made by Watson are the iron name letters for buildings. The First Church of Christ

Scientist has such a sign. There is no limit to the use of ornamental iron, according to Watson. Door hardware made by him may be seen at Eastwood Baptist church. He has also made shelves and light fixtures as well as the more common railings, columns, and patio furniture. The iron columns containing pears seen at the Harry and David office building were designed and made by Watson.

Further Slowdown In Fir, Plywood

Portland—A further slowdown in fir lumber and plywood in the week ending June 5 was reported by Crow's Lumber Market News Service of Portland. Green Fir dimension prices were off an average of \$2 per thousand during the week, according to Crow's, and plywood was also moving toward lower levels.

The most urgent demand from the midwestern and eastern rail markets have been met, Crow's said, and dealers are rebuying cautiously for late summer or fall inventories. An oversupply of cars in transit has been a weakening factor, both in fir lumber and plywood sheathing.

Green Fir 2x4's in the standard and better grade have slipped slightly below the \$80 mark, and lower grades are also weaker in price. Dry dimension has been steady, with less buying activity this week than last. Cargo buyers, ordering for July and August shipment, have taken a steady volume, and prices have not changed in this category.

Between 1939 and 1954 the number of students in the United States colleges almost doubled in number, from 1,364,000 in 1939 to 2,475,000 in 1954.



RAILING AND GATE—The railing and gate enclosing the baptistry at Sacred Heart Catholic church were designed and made by Cecil Watson, Pacific Forge and Iron Works. Railing is one of the more popular orders at the shop. Such projects as this, when made by monks many years ago, were quite ornate since they had to make the iron themselves, making it very valuable so each little bit was used. Times have since changed, today the amount of labor used determines the cost more than the amount of iron. Iron work in the United States reflects the trends of the country from which the settlers came. On the East coast ornamental iron was introduced from England by the pilgrims, New Orleans iron work is definitely the ornate French pattern while on the West coast the ironsmiths were Mexicans and Spaniards.

Watsons Designs, Makes Much of Area Ornaments

By PEG HUTCHINSON
Mail Tribune Staff Writer

One of only a handful of remaining iron artisans in the United States is owner and operator of the Pacific Forge and Iron Works, 3552 South Pacific highway, Medford. A man who has always worked with his hands, Cecil Watson has designed and made much of the ornamental iron in the Rogue River valley.

Watson has lived in the valley for the past 10 years, prior to that time he was a blacksmith in Portland and Alaska. While in Portland he worked with the late William Nagel, also an iron artisan. Nagel received his training in Germany and started working in Portland about 1900. The ornamental iron on the old Portland hotel, old Oregonian building and the Portland library were executed by him.

Given by Nagel
Many of the blocks, or hand-made patterns, used by Watson on which the scrolls and other designs are formed were given him by Nagel.

Watson has added to these blocks with some he has made and prizes them all. They serve for him as the brush does for the artist.

Only handmade scrolls are "true." Watson explained, those made by machine do not have the finished tip. The machine needs a small amount of iron on which to grip before the scroll can be formed.

Represent Flowers
In speaking of the scrolls which form the basis for many ornamental iron projects, Watson explained that they represent flowers.

Occasionally the tips of the scrolls are shaped into leaves or other small intricate designs. But, he added, they aren't seen too often now, such work must be done by hand and it adds to the cost. "All artistic touches must be made by hand," the artisan explained.

Railing is one of the more common orders, Watson said, and that which he has made varies in cost from \$2.50 to \$45 per foot. The more hand-work and elaborate, the more expensive.

"Since outdoor living has become a fad, I have received orders for furniture as well as patios and columns. Then, too, much of my work is used indoors."

Massive Gate
Watson's shop receives orders from throughout the west coast and some eastern states. One project completed several months ago was a massive gate for the Evergreen cemetery in the Shasta Valley cemetery district. The gate will open to a 20-foot width and stands 8½-foot high.

The Medford man explained that he hires from one to six men, depending on orders on hand. Two men, he said, working three weeks could complete an order such as the cemetery gate described.

The slowest time of the year for orders is during the summer months when people are taking their vacations, he said.

The local artisan receives orders from architects but the majority come from the individuals.

Determine Style
"I first find out what style they wish — French, Italian, colonial, or modern, and if they know how much they wish to pay. From this I have some idea as to the design."

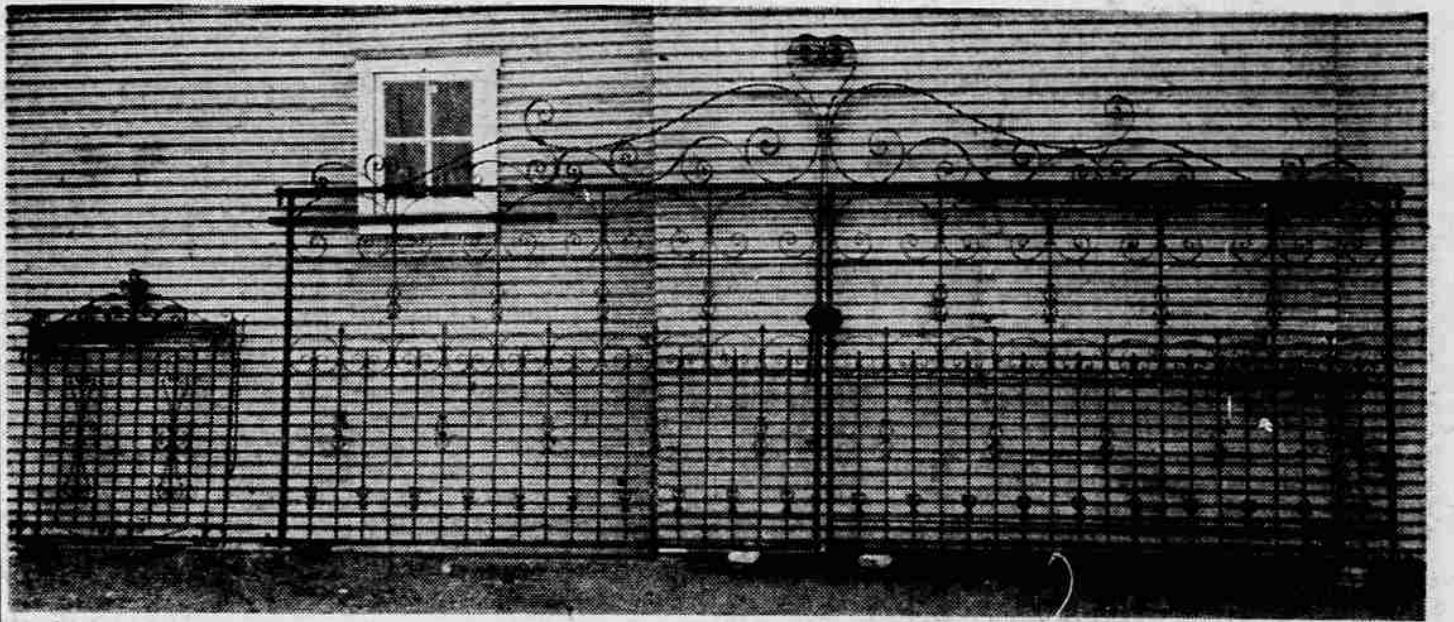
"In many cases," Watson continued, "I submit several designs to give them an idea of the cost and then work from the sketches."

The sketch is then made into a penciled "blueprint" on drawing paper thumbtacked to a board.

Prior to making a scroll the ironsmith figures the size of the opening into which it will be placed. With chalk he marks off the size on the metal top of a table that stands not far from his forge.

Locates Center
Once the area is marked off, he locates the center and then rough sketches in the planned scroll. With a calibrated scroll, Watson then measures the sketch to find the length needed so a strip of iron may be cut.

In the forge Watson heats one end of the iron until bright red, then hammers the tip flat on the anvil. While the iron is still hot he continues hammering the tip on the edge of the anvil which causes the iron to curve. From there it is placed on the starting block where the hammering on the curved surface



CEMETERY GATE—A project completed by the Pacific Forge and Iron Works several months ago was a gate for the Evergreen cemetery in the Shasta Valley cemetery district. The gate opens to a 20-foot width and stands 8½ feet high. An overhead, which spans the gate opening, includes the name "Evergreen Cemetery" and will rest on two 8-foot brick faced concrete posts. The small gate to the left is for a sidewalk at the cemetery. The local com-

pany is owned and operated by Cecil Watson, one of a few iron artisans in the country who not only designs but makes ornamental iron. In iron, scrolls are flowers. French and Italian styles cost more than the modern or colonial. The extremely elaborate designs are seldom made today, according to Watson, due to the large amount of hand-work necessary for each piece making it expensive.

makes the first half turn in the iron piece, later found in the center of each scroll.

Once cooled the iron is placed on a scroll block and is bent around it to the desired tightness.

Only Time Heated
Watson added that the only time the iron is heated is to start the scroll, the rest of the shaping is done while the iron is cold.

The individual scrolls are held together by clips and the entire pattern is either welded into the frame or held there by concealed bolts.

Many of the designs drawn by Watson include flowers. These are castings and are purchased as he does not have a foundry at the shop.

Weather Vanes
Among the many articles made at the Pacific Forge and Iron Works are iron cutouts used by valley residents as weather vanes and house and mail box decorations.

Watson mentioned that the demand for ornamental iron has increased sharply since World War II. Since 1943 more ornamental iron has been manufactured and sold in the United States than throughout the entire world for the preceding 1,000 years.

From the number of orders received by the Pacific Forge and Iron Works for ornamental iron and the many valley homes and businesses using it, the trend does not seem to be changing.

Application for Crossing Approved

The Oregon Public Utilities commissioner has granted an application from Jackson county to construct a grade crossing over the Southern Pacific railroad tracks at Elk st. north of Medford.

The road, which until recently was a private road into Elk Lumber company, has been used by the general public, and since being taken over by the county, constitutes a part of the county's general road system, the county court said in its application.

The county plans to repave the section at the crossing.

The application was granted after a public hearing here April 16, at which Glen E. Seidler was examiner for the PUC. Testifying during the hearing were Brian B. Mullen, deputy district attorney; John R. Dellenback, attorney for Elk Lumber company; Irving C. Allen, assistant attorney general, Salem, counsel for the PUC; and James C. Ingwersen, attorney for Southern Pacific, Portland.

War I Vets Hope Pension Approved

Albany—(UP)—The department commander of Oregon Veterans of World War I says he is hopeful that Congress will pass a bill calling for a \$100 a month pension for veterans at the age of 60.

Ralph J. Baldwin of Salem told the annual convention of the group Thursday that the measure was now before Congress and "we're looking for it to pass before it adjourns."

Some 300 delegates were attending the three-day convention.

4-H Club News

Kaper Kids
A meeting of the Kaper Kids Goat club was held June 5 at the home of the leader, Mrs. Pauline Lindstrom. There were nine members, and 10 visitors present. The members worked on emblems to wear at the fair and on plans for managers to use at the fair.

Mrs. Lindstrom served refreshments and then everyone went out to look at the animals.

Janet Glidden, Substitute reporter.



LOCK—A closeup of the lock on the iron gate for the Evergreen cemetery shows not only the detail of the lock itself but the gracefulness of the scrolls used throughout the gate. The flattened smooth tips of the scroll shows that it is hand-made.

Seed Growers Vote For Commission

Salem—(UP)—Growers of highland benigrass seed have overwhelmingly approved formation of a commodity commission for their crop, Agriculture Director Frank McKennon has announced.

He said 85 per cent of the 220 producers voting in the two-week balloting favored the commission.

The vote: 187 for and 33 against.

Formation of a commission requires a two-thirds majority of those voting. Total votes must represent at least one-third of the Oregon production. Both requirements were met.

The governor will appoint the commission after recommendations are submitted by growers.

Endowed Care

Adequate funds are placed in an irrevocable trust fund to fully insure future upkeep of your Memorial. Call Mr. Driscoll for information.

HELP US!

We Need Clothing, Shoes, Dishes, Furniture, We Pick Up, HELP OTHERS!
The Salvation Army
Spring 3-7335

War I Vets Hope Pension Approved

Albany—(UP)—The department commander of Oregon Veterans of World War I says he is hopeful that Congress will pass a bill calling for a \$100 a month pension for veterans at the age of 60.

Ralph J. Baldwin of Salem told the annual convention of the group Thursday that the measure was now before Congress and "we're looking for it to pass before it adjourns."

Some 300 delegates were attending the three-day convention.

STA-OFF CORN REMOVER

Gives instant relief from pain and positively removes hard corns, soft corns between the toes, callouses, warts, papillomas, club nails. It contains several different oils that soften, loosen and does not cause the irritation as do strong acid mixtures. When all others have failed by this one. Try our Benion Relief, which relieves pain, soreness, swelling first or second application. Each remedial sold on strong back guarantee.

Detailed Review of Outdoor Recreation In Forest Announced

A detailed review of fast-growing outdoor recreation on the Rogue River National Forest has been announced by Forest Supervisor Carroll E. Brown.

The forest service has been planning the review for several months, and is now readying field task forces which will begin on-the-ground studies July 1.

Called the National Forest Outdoor Recreation Resources Review, its purpose is to get a clear picture of recreation resources and opportunities on the public lands. Facts thus gained will be used as the basis of programs to meet the swelling public demand.

The review, according to Brown, is expected to supply information needed by the National Outdoor Recreation Resources Review commission which was established by law in 1958.

Include Inventory
The forest service review will include inventory and evaluation of recreation resources and possibilities in the 888,500 acres of national forests lands. Under multiple-use management, recreation is integrated with the other resources—timber, water, wild-

life, and grazing—to best serve the public interest and preference. The review will assure that full consideration is given recreation needs in the stepped-up management of national forests for the future.

The first phase will involve mapping existing information with the aid of aerial photographs, finding out what lands are suitable for various recreational uses, and pinpointing areas needing more study.

Field crews will then go in and inventory these areas. They will find out the acreage available, how accessible it is to the public, whether it is available, what natural attractions—water, unusual scenery, mountains—are nearby, and over-all quality of the area from the standpoint of

public recreation. All kinds of outdoor recreation will be considered, including camping, hunting and fishing, picnicking, mountain climbing, boating and swimming, skiing, hiking and horseback riding and the enjoyment of wilderness and wild areas.

Data Be Compared
Field work is scheduled to be completed in the fall of 1960. Data from the field, along with other information, will be compared with estimated future recreation use.

The final report will be issued in the spring, 1961. From the studies will come firm plans to best use the available land and water resources of the national forests to meet outdoor recreation needs of a much larger population in 1976 and 2000.

Wallace R. Robinson of Medford will have charge of the survey work. Brown added. Robinson recently attended a zone training meeting at Roseburg to prepare him for this assignment. Training will be completed by June 10 and at time field work will start.

The forest report will be combined with the report of other national forests and submitted to the Washington, D.C., office of the forest service by Dec. 31, 1960, Brown said.

Salem—(UP)—Appointment of Vincent H. Brunson as hospital manager of the new state correctional institution here has been announced.

The Golden Gate Bridge is about 8,949 feet in length; 4,000 feet between towers, and it rises an average of 746 feet above the bay.

Conger-Morris Hillcrest Chapel

HILLCREST Memorial PARK

Bill Driscoll, manager
North Phoenix Road
Phone SP 3-6162 or SP 2-7111