

Here's a Real Thirst Quencher! CRAGMONT
BEVERAGES

12 sparkling flavors of refreshing soda pop and mixers to choose from.

Full Quarts
Plus Bottle Deposits

6 for **\$1**

IVORY BAR SOAP

Look at this big savings on America's favorite bath soap. This mild, gentle soap is kind to your skin . . . fine for getting dishes really clean, too. Stock up now and save MORE at Safeway.

Medium Size Bar

10 for **\$1**

MARGARINE

Coldbrook brand. A fine quality margarine at a special money-saving price for this weekend at Safeway. Grand for all cooking, baking, and frying.

1-lb. Package

6 for **\$1**

EMPRESS JELLIES

Here's fresh fruit flavored, finest jellies, preserves and marmalade . . . right on your table. Delicious Apple, Blackberry and Grape jelly . . . Apricot-Pineapple or Strawberry preserves . . . and Orange marmalade. Mix 'em or match 'em.

12-oz. Glasses

4 for **\$1**

FROZEN PEAS

Bel-air brand . . . absolutely the finest tender, young sweet peas, that money can buy. They are quick frozen at their peak of flavor goodness, and kept that way . . . to give you real "Garden Fresh" flavor.

10-oz. Packages

7 for **\$1**

FRUIT PIES

Have you tried our delicious . . . NEW "premium quality" Bel-air frozen apple, boysenberry, peach or cherry pies. They are made with the finest in selected fresh fruits. No fuss or bother . . . just cook and serve.

8-Inch Pies

2 for **\$1**

CHUNK TUNA

BUMBLE BEE and SEA TRADER brand, all light meat, chunk style tuna, from the Northwest. Grand with your favorite spring salad menus . . . delicious sandwich spreads, and baked fish dishes. Stock up now and save MORE at Safeway.

No. 1/2 Cans

4 for **\$1**

SARDINES

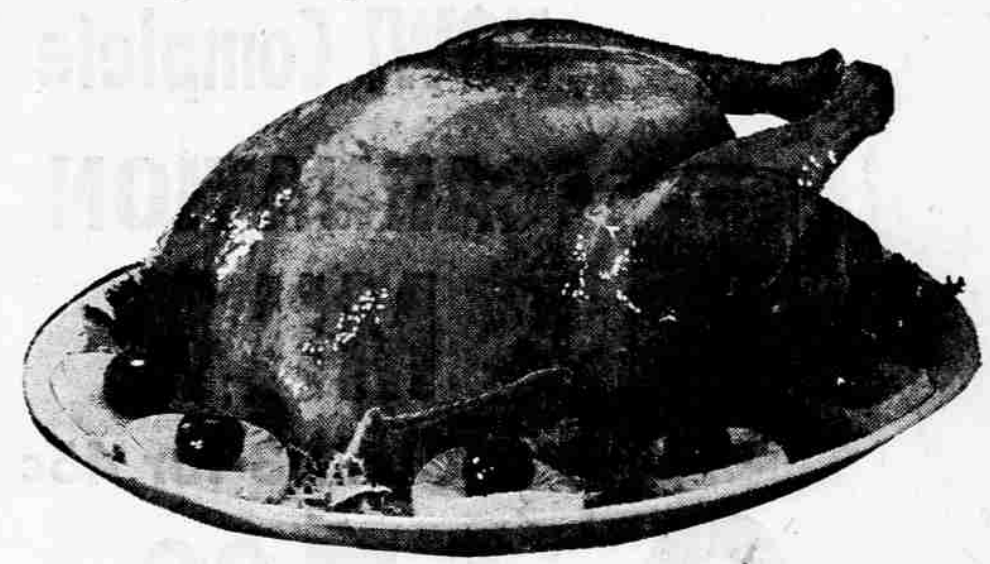
You can be sure of finer flavor and quality when you buy STAR BOAT brand, large, meaty sardines. Stock up now for picnic lunches or "pickup" lunches at home. A real value.

15-oz. Oval Tin

5 for **\$1**

This weekend's top meat value . . . **SAFEWAY**

Young grade "A"
Hen Turkeys
14-16 lb. Weight Range



Each and every bird is spotlessly clean and quick-frozen in a protective film to preserve its full rich flavor. They are plump, young birds from the nation's choicest flocks. These beautiful turkeys require from 15 to 20 minutes per pound at 300° F to assure you of the finest eating birds for the money. They are so fine we guarantee them 100% or your full purchase price will be refunded.

39^c
lb.

Safeway Breakfast Sausage



Here's a brand new all meat sausage that's sure to make a big hit with your family. It's made with pure pork beef and veal with delicate seasoning.

1-lb. rolls

39^c

Skinless Wieners

Del Monte "Sweetheart" or Safeway . . . all meat

1-lb. pkg. **49**^c

Fresh Fryers

Finest Oregon grown, spotlessly clean. From 2 to 2 3/4-lb. average. Whole drawn.

lb. **39**^c

Sliced Bacon

Morrell's Yorkshire brand. Finest sugar cured-lean streaked bacon

lb. pkg. **49**^c

Boiling Beef

"USDA CHOICE" plate cut beef. Well "aged," grand for braising and stewing.

lb. **19**^c

More "Budget Savers" Featured This Weekend at Safeway

Shortening

Royal Satin brand, finest pure white all-vegetable. 8c off deal pack on each tin

3-lb. tin **69**^c

Gum Drops

Roxbury brand Orange Slices, Lemon Slices. Fine candy at a money-saving price.

2-lb. pkg. **49**^c

Candi Cane Sugar

Finest pure cane granulated sugar. A real value.

25-lb. bag **2.77**

Lucerne 3.8

Richer "Bonus Quality" milk. Finest at no extra cost to you.

1/2-gal. **47**^c

Mrs. Wright's Bread

Save 2c on each loaf of enriched white or wheat.

large loaf **31**^c

Fresh Eggs

AA Large Cream of Cr.

2 doz. **85**^c

Cream Cheese

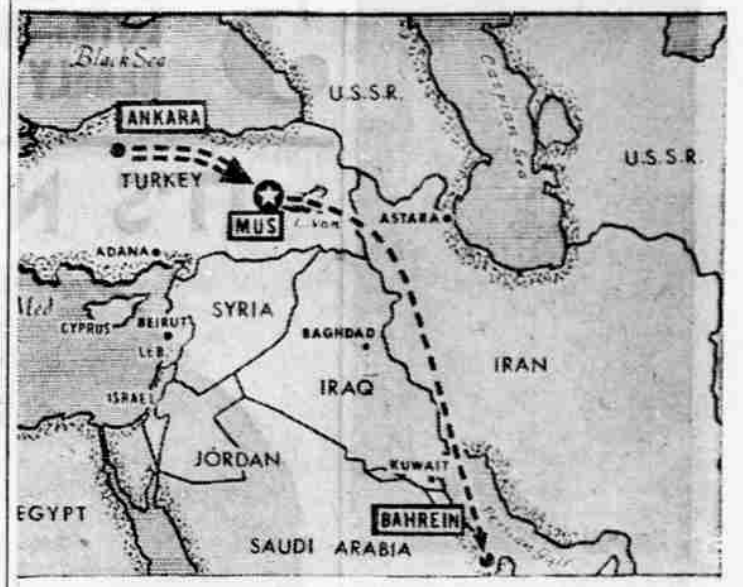
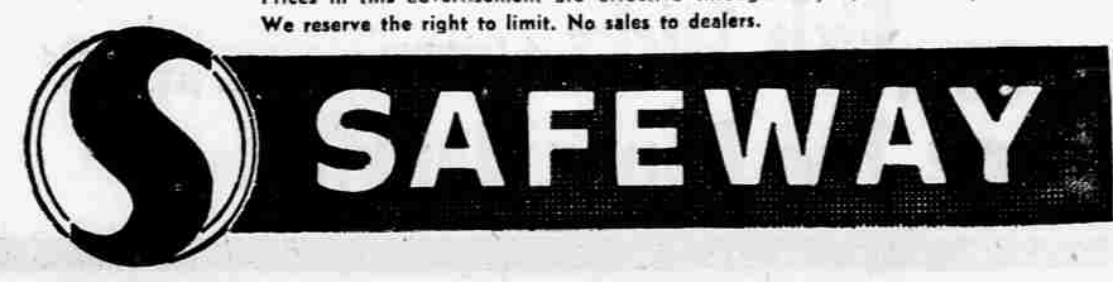
Philadelphia brand. Always FRESH with a creamy white delicate flavor.

8-oz. pkg. **43**^c

- Finest Natural Cheddar
- Mild Cheddar Cheese** 20-oz. loaf lb. **63c**
- Monterey Cheese** Mild-flavored 20-oz. loaf lb. **63c**
- Fresh Corn Bread** Skylark brand 1-lb. loaf **28c**
- Cinnamon Twist** Curtsy Feature of the week pkg. **30c**
- Orange Drink** Lucerne brand, refreshing fruit drink 1/2 gal. **33c**
- Marshmallows** Fluff-i-est 16-oz. pkg. **29c**

- Ice Cream** Lucerne Party Pride Rich Maple Nut 1/2 gal. **89c**
- "Best" Beer** Finest Eastern in 12-oz. tins 6 can pack **95c**
- Blitz - Heidelberg - Lucky Lager** 12-oz. tins 6 can pack **1.23**
- Western Beer** 6 can pack **1.23**
- Cigarettes** Camels - Luckies, Chesterfields Ctn. reg. size **1.85**
- Cal-Ore Wines** Fifth 69c 1/2 gal. **1.49**
- Mr. Clean Detergent** 15-oz. bottle **39c**

Prices in this advertisement are effective through May 3, at Safeway in Medford. We reserve the right to limit. No sales to dealers.



VANISHING NEAR BORDER of Russia, Turkey, British transport plane carrying secret rocket equipment is believed captured by Russians. Bound from Ankara to Bahrain, plane was last reported flying over Mus (star).



Small Worlds Around Us
By Lynn M. Watkins

Wasp Lays Eggs

Through Solid Wood
Even after watching her "accomplish the impossible" I still couldn't believe it. Yet there before my eyes, an insect was driving a delicate, flexible hollow tube, no larger in diameter than a human hair, into the solid wood of a tree trunk to the unbelievable depth of an inch and a half.

She had located, there with in the solid wood of the tree, the larva of a wood boring insect. By some sense perception this frail insect was attempting, by driving her ovipositor or egg-laying organ into the tree, to lay her tiny egg on a hidden insect-larva, intending - and successfully - to parasitize the wood boring insect.

Use Other Insects

These wasps, widely distributed throughout much of the United States, have the instinctive desire always to deposit their eggs on or in the body of other insects. It is fortunate that the "other insects" are those known to be harmful to crops, which makes this small wasp a valuable aid to man.

The laying of the egg in the body of the insect larva, or host, means sure death to the injurious insect. The ovipositor of the Ichneumon wasp is all of two inches in length. It is a very slender, flexible, hollow tube.

When in position to drive this frail organ into a tree trunk the female wasp loops it behind her, centers it on the tree bark, and starts to actually "drive" it into the wood. Slowly it begins the penetration, taking 15 or 20 minutes to reach the desired depth.

Phoenix Lions Plan Breakfast Sunday

Phoenix - The Phoenix Lions club will sponsor a breakfast at the Phoenix Community club between 7 a.m. and 1 p.m. Sunday, club officials have announced.

Ham, eggs, bacon, hotcakes and coffee will be included in the breakfast, proceeds from which will be used for a scholarship for a graduate of Phoenix High school.

BEFORE HIS TIME

London - (AP) - Police Sgt. Howard Perry reported that a 45-year-old man he arrested Wednesday for panhandling pleaded that he be let go because: "I am too old to work. I am over 40 . . ."

the wasp. She weighs next to nothing. The ovipositor is as flexible as a human hair yet somehow or other it is driven deep into the wood. Then down through the hollow tube-like organ travels a tiny egg to be deposited on or in the body of the hidden larva.

Flies Away
After the female Ichneumon wasp succeeds in penetrating the wood and depositing her egg, she withdraws the egg-laying organ and flies away. The tiny egg, now resting in the body of its host, hatches into a tiny larva. It will completely eat its host. Then it will pass through three stages of development before it reaches adulthood.

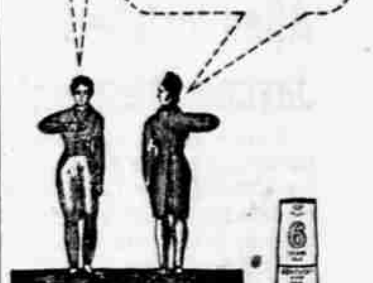
On one occasion, after the wasp had left, I returned to the tree with a hammer and a nail. It took two sharp blows of the hammer to drive the nail into the wood the same distance the female wasp penetrated with her delicate, thread-like ovipositor. In the body of this small wasp, that weighs about as much as a single paper match, is that peculiar instrument that performs an "impossible" penetration of solid wood - a feat which has no logical explanation.

(Released by The Register and Tribune Syndicate, 1959)

DOWN AROUND BARDSTOWN, KY. 1810

Mr. WATERFILL, this is the purest surface limestone spring in Kentucky.

Mr. FRAZIER, we could make beautiful bourbon together.



WATERFILL and FRAZIER
KENTUCKY STRAIGHT BOURBON WHISKEY - 86 PROOF 5 YEARS OLD - DISTILLED AND BOTTLED BY THE WATERFILL AND FRAZIER DISTILLERY COMPANY BARDSTOWN, NELSON COUNTY, KENTUCKY ALSO AVAILABLE IN 100 PROOF BOTTLED IN BOND.
\$3 PT. Code 181-C \$4.65 QT. Code 181-B

ROAD OILING
Dust Palliative Oil
Hughes & Dodd Co.
Phone SP 3-4221