

Farm and Garden

Advice Given On Damping Off

By DON BERRY
County Extension Agent
Home gardeners seeding early spring vegetables and flowers in hot frames or greenhouses should take precautions against damping off.

Damping off is caused by a soil fungi which will attack both sprouting seeds and the tiny seedlings as they emerge, thus reducing the stand. Infected seedlings show a browning on the stems, wilt, and fall over. This trouble is common in greenhouses, hot beds and even outdoors during warm humid weather.

Seed treatment is the best method of control. Materials like Arasan or Captan are available to home gardeners for treating their seed. A very small quantity, about as much as can be placed on the tip of a knife blade, added to seed packets and then shaken gently until seeds are coated, is the simplest method of treating.

Where damping off has been a serious problem, additional protection is obtained by dusting the surface of the soil with Captan or Ferban, or drench with a solution made up using two level tablespoons of Captan or Ferban in one gallon water, thoroughly soaking the soil at seeding time, and applying a second drench or dust as the young plants emerge.

GETTING FIRST REACTOR

Canoga Park, Calif.—UPI—The first atomic energy reactor for the Caribbean area will be sent this week to Mayaguez, Puerto Rico, for use in research. Atomic International builders of the 10-watt reactor, announced Wednesday it would be set up at the University of Puerto Rico.

Student Teaches To Choose Career

Central Point—To teach or not to teach has been the question facing a Future Farmers of America member and vocational agriculture student at Crater high school in Central Point.

Teacher and chapter advisor Ed Griggs helped the boy solve his dilemma by putting him to work teaching.

Allen Barnes, chapter and FFA district president, taught agricultural mathematics in vocational agriculture a full semester. This helped him to decide to go to Southern Oregon college in Ashland next year with a possible transfer to Oregon State college in the future where he will gain the necessary background for a vo-ag teacher. Barnes, an outstanding football player, has been in a coach over whether to be a coach or teacher. Now he may combine both careers.

Many people don't really know whether they want to be teachers until they get out in the field and are given the opportunity to teach," vo-ag instructor Griggs said.

So, Barnes was assigned to teach a unit of study in agricultural mathematics to the sophomore vo-ag class. He was responsible for preparation of the course teaching outline or lesson plan, for discipline and grading the papers.

His teacher discussed with him the categories of agricultural mathematics. He also explained, that from observation, he noticed many students learn mathematics by formulas. They work problems if they are set up for them. However in shop problems including elementary mathematics the same students are unable to use reflective think-

CUTS GASOLINE PRICE

Rome—UPI—The price of gasoline in Italy will be cut by 11.35 lire (slightly more than one cent) a gallon on May 15, the government said today. The decrease, the second this year, will put the price at 76 cents a gallon.

FARM NOTES

Washington—UPI—Rep. Steven B. Derouin (R-N.Y.) proposes legislation to put an immediate temporary halt to the government's multibillion dollar farm price support program.

Derouin's bill orders the secretary of agriculture to suspend all loan and purchase operations and any other activities resulting in further government investment in farm products until surplus stocks currently held are disposed of.

Washington—UPI—The agriculture department said about half the total acreage retired from crop production under the conservation reserve of the soil bank is in the form of whole farms.

Washington—UPI—The Agriculture Department's monthly outlook digest today gave this thumbnail sketch of the agricultural situation:

- Net income to farmers this year will be about \$1 billion below the \$13,100,000,000 rolled up in 1958.
- Production expenses will climb in 1959 as they have in 18 of the last 20 years.
- Income to farmers from non-farm sources probably will increase.
- Prices received by farmers, now about five per cent below a year ago, are likely to stay under 1958 the rest of this year.
- Supplies are heavy, stemming from record production last year. Crop production this year could be heavy again.
- Hog marketings are up sharply, a dry production will be above 1958 and a near record, poultry and egg production are at a record rate, cattle numbers are increasing but marketings will stay at about last year's level.
- Pickup in agricultural exports is likely the last half of this year.

Washington—UPI—Spokesmen for the nation's poultry industry have urged Congress to vote enough money to finance federal inspection of all poultry plants.

Harold M. Williams of Chicago, president of the Institute of American poultry industries, told a Senate Agricultural Appropriations subcommittee Tuesday that the federal inspection program was not being carried out "fully and fairly."

Williams said the industry was not in a position to say exactly how much should be appropriated for inspection costs in the fiscal year.

Washington—UPI—The Export-Import Bank of Washington has extended a credit of \$600,000 to Honduras to finance the purchase of 1,000 head of purebred beef and dairy cattle in the United States.

Washington—UPI—Sen. Herman E. Talmadge (D-Ga.) has introduced a bill to force the government to pay the prevailing retail price for milk if it buys for federal installations.

Talmadge told the Senate Wednesday that milk producers are placed under a "severe and unfair financial hardship" by the present system under which the government takes bids for its milk supplies. He said distributors bid for the milk contracts, then "dictate a price to the producer on a 'take it or leave it' basis."

Washington—UPI—The Farm Bureau Federation has told Congress it opposes a plan to make long-term food loans to underdeveloped nations.

A Farm Bureau spokesman said plans of this kind would make foreign countries depend more and more on help from our government, and less and less on the normal commercial market.

Washington—UPI—Stocks of feed grains, wheat, and soybeans on April 1 set new records, the agriculture department reports.

The department said wheat stocks of 1,600,000,000 bushels were 17 per cent above the previous high. Sorghum grain stocks of 613,000,000 bushels were up 44 per cent, and soybean stocks of 323,000,000 bushels were 26 per cent above the previous record.

Corn stocks of 3,000,000,000 bushels were seven per cent above the record level of one year ago.

Washington—UPI—Secretary of Agriculture Ezra Taft Benson has urged all citizens and organizations to observe Soil Stewardship week, May 3-11.

EX-GOVERNOR DIES
Gibraltar—UPI—Gen. Sir Kenneth Anderson, 67, who served as governor of Gibraltar from 1947-52, died Wednesday.

--- CHIT CHAT ---

By JOE COWLEY
Mail Tribune Farm Editor

An old high school history teacher used to tell us a study of the past often provides a glimpse of the future. We thought this appropriate when visiting this week the Century Farm of George W. Dunn, rented by his son, George Edward Dunn.

The younger Dunn follows what might be called diversified farming on his 300 acres which includes some alfalfa, meadow hay and grain. His 110 "grade Hereford" cows, calves and registered bulls range up "on the hill" — in the Howard Prairie area.

Recreation is fast crowding out range land, Dunn pointed out. Tourist camp near the fresh water springs used by cattle, and their dogs drive the cattle away. It won't be long before no government range land is left, the veteran farmer noted.

Other things noted during our visit as trends in modern agriculture were more specializing, more dependency on



George W. Dunn House

town stores for things formerly raised on the farm to feed the family — eggs, fresh vegetables, fruits, perhaps even milk and butter, elimination of raising some crops by government controls and perhaps a much closer tie with nearby towns.

The farm developed by grandfather Patrick Dunn from a donation land claim in 1851 has one of the oldest water-rights in the state — 1852. Patrick Dunn came from Ireland to Philadelphia and eventually made his way to the spot where he established his homestead, by way of California and mining in Jacksonville area for a year.

Donation land claims were measured by the metes and bounds system. This resulted in odd shapes and such pioneer measurement still gives the county assessor's office headache come tax assessment time.

Dunn pointed a calloused finger to a steep hillside facing the farm from across "old Highway 99" saying there the family used to grow plenty of wheat in earlier days. One year the harvest from the hill filled two railroad cars for Portland. That was before the government paid the farmer to take the wheat out and plant the land to grass.

Once 200 to 300 turkeys spread their wings and strutted over the Dunn farm. However, larger producers who could specialize could ship the birds into the valley cheaper and the Duns and others who raised turkeys as part of their farm enterprise found it didn't pay.

"Besides those birds would go through a grain field and knot up the grain which made it darn near impossible to harvest," Dunn remarked.

The Duns have a small flock of chickens for fresh eggs and an occasional Sunday chicken dinner. Fresh vegetables grow in a garden in the back of the house. But, Dunn is the first to admit that home-produced eggs and vegetables are luxury items since they could probably be purchased for less money in town.

Dunn likes to mix in a little shorthorn stock with his cows. The cows give more milk and the calves come bigger than the Hereford calves, he said. The first cross is often better than the straight breed, the farmer noted. Dunn sells weaner calves.

There was a time when those on the Century Farm milked 60 or 70 cows. Milk was skimmed by hand and separated in Ashland. The skimmed milk was used for hogs and calves. Then, too, when Dunn was a youngster, the farm produced all the family could eat.

A 90-year-old weeping willow tree, gnarled with age provides shade and coolness for one large corner of the front lawn which forms a broad green carpet to the comfortable, well-worn house. Dunn and his brother were born in the front bedroom soon after the doctor had rattled up to the farm in his buggy. The wood, frame structure was built in 1860. The original home on the place was a squatter's log cabin on one corner of the farm.

The broad front porch running the width of the house shows many scuffs and boot marks from the time the field-weary men would tilt the chairs back and open their shirts to the cool evening breezes. Those were the days when the men would get up at 4 or 5 a.m. to feed the horses, then spend 10 hours in the field, come back to milk the cows and feed the horses again.

Dunn remembers the time when he and his two brothers attended the old training school which was part of the normal school. Horse drawn school buses would pick the children up. As a member of the Ashland school board for 10 years, Dunn has seen many changes in education.

Signs of the changing times show in the work being done on expanding the Emigrant reservoir four miles away from the Dunn farm. There a reservoir of 8,000 acre feet is being expanded to 40,000 acre feet. The dam is being raised 85 feet to an overall height of 190 feet. The reservoir water will be raised 75 feet.

Merit Employment Topic for Forum

Salem—Five personnel specialists will conduct a round-table on merit employment at the Intergroup Relations Forum in Portland May 9.

Labor Commission Norman O. Nilsen said the morning round-table on personnel problems will be an innovation in the forum which is held annually under the auspices of the bureau of labor civil rights division and the civil rights advisory committee.

E. Shelton Hill, industrial relations director of the Portland Urban League, will act as moderator. Practices of recruiting and promoting employees to provide equal opportunity for persons of all races, creeds and ancestry will be evaluated by the table.

Another discussion feature will be a general quiz session covering all racial and religious discrimination, according to Mark A. Smith, state

civil rights administrator. Milton D. Goldsmith, chairman of the civil rights advisory committee, will head the workshop considering questions from forum participants.

The conference will convene at 9:30 a.m. at Portland State college. The forum theme, "Our Concern for Human Rights in Oregon," also will be developed in a program of speeches. All sessions are open to the public.

HERE'S A SWITCH
Des Moines, Iowa—UPI—State tax officials reported today they had received \$5 from an Iowa woman in payment of a \$1.69 income tax bill, with a note saying "every Iowan ought to be willing to pay at least \$5."

SHE FOLDS QUICK
Tallahassee, Fla.—UPI—Margaret Folds Quick is in county jail on a charge of public drunkenness.

New Chemical Now Designed For Corn Weeds

Corvallis—A new chemical that does an outstanding job of controlling annual weeds and quackgrass in cornfields is now available to farmers, according to W. R. Furtick, weed control researcher at Oregon State College.

The new chemical, named atrazine, passed 2-year field tests at the OSC agricultural experiment station with flying colors, Furtick reports. Other tests by the OSC department of agricultural chemistry found a complete absence of chemical residue from atrazine in corn, and it has now been cleared by the U.S. Department of agriculture for use on corn.

Atrazine is closely related to simizan, a chemical currently used for weed control in corn. However, the new chemical has several advantages over simizan and similar weed-control chemicals. Furtick said. Atrazine is more effective in killing more kinds of annual weeds. And, since it is taken up by weeds through both roots and leaves, it can be used as a pre-emergent or post-emergent spray.

More Water Soluble
The new chemical is more water soluble than simizan, which means it needs less moisture to get into the soil where weed seeds are germinating. Its higher water solubility also helps it leave soils sooner, so there's less chance of killing cover or other crops planted after corn is harvested.

For corn fields with annual weeds other than barnyard millet (often called water-grass), Furtick recommends 3 pounds of 50 per cent wettable atrazine powder in 15 or more gallons of water per acre, where the entire field surface is to be sprayed.

Spraying costs can be lowered by spraying just "bands" above corn rows, he added. Spray is mixed in the same concentration, but the amount applied to each acre will depend on width of the band.

To control barnyard millet or quackgrass in corn fields, Furtick suggests 4 pounds of 50 per cent wettable atrazine powder in 15 or more gallons of water per acre.

Areas where rains are scarce and irrigation isn't used will get better results if atrazine is applied after weeds have come up, Furtick advised. Wait until corn leaves have just fully unrolled. Spraying at this time won't hurt corn, he added.

Cost of spraying with atrazine will be only slightly higher than with similar weed-control chemical now used by farmers in their corn fields, Furtick said. Seed and chemical-supply stores have been obtaining stocks of the spray, and it should now be available anywhere in the state, he added.

More information on use of the new spray can be obtained at county extension offices.

Thistle Control Given By Agent

Spraying star thistle now with a weed herbicide will control this unsightly, moisture and forage robbing weed, said Gene Winters, Jackson county extension agent.

Good results have been obtained spot spraying the plant prior to flowering with a solution of one pound of 2,4-D ester in fifty gallons of water per acre.

Star thistle is the yellow flowered weed seen in dry-land pastures, vacant lots and the lower hills. Last year's dead plants are now about 2 1/2 feet tall with whitened stems and narrow, sharply pointed leaves. The new plants may be found at the base of the old plants.

Care should be taken when the spray material, says Winters. Desirable broad leaved plants may be damaged by 2,4-D, with the ester form volatile enough to cause danger to sensitive plants.

AUTHOR DIES
New York—UPI—Dr. Martin G. Vorhaus, 63, author of "Adam's Rib" and other books with medical subjects, died Wednesday.

PRIMATE DIES
Stockholm—UPI—The primate of Sweden's Established Lutheran Church from 1950-58, former Archbishop Yngve T. Brilloth, 67, died Monday.

BRILL METAL WORKS
Commercial — Industrial Residential Sheet Metal Work
Stainless, Galvanized and Copper Fabrication
2287 West Main
PHONE SP 2-4440

Tips Given in Planning Gardens In Spring Time

By J. VERNON MARSHALL
For Rogue Valley Nurserymen and Growers Association and Oregon Association of Nurserymen

Spring is here for sure now and gardeners have to step lively to keep up with things. With Easter out of the way, the orchard heating season about to end (we hope) I would like to point out a few plants and some of the culture in general gardening.

It should be safe now to start setting out geraniums, providing you continue to listen to the frost warnings and cover them if the key station temperature will be 32 degrees or less. For geraniums, make use of heavy soil, and for best results feed regular every month good organic food such as Liquinox through the growing season. This will feed the leaves as well as roots so the plant will look better and bloom better.

Time to Set Out Plants
Now is the time also to set out Salvia, Ageratum, Heliotrope, Lantana, Abutilon and others. The frost should be kept in mind, also. However, you will not have to worry about the frost for petunias, snap dragons and with all small perennials.

Now, for some special features in the small home garden — Avoid having all garden sections looking alike. Treat

each section and planting differently from the others. The result can be helped considerably by whatever additional work has to be done after the grading, lawn, drive, walks and lot line plantings have been completed. Perennial and so-called hardy flower borders add a great deal. I will take these up in articles to follow.

A little formal garden that can be laid out in an almost endless variety of designs is always attractive. Then there is the rose garden and the water garden or pool which can be made quite a feature. The rear of your residence can be made often to look even better than the front and is often used more than any other part of the grounds.

A few specimen conifers are almost always in place somewhere, rustic or concrete benches may be used. The rockery can be made in endless shapes to harmonize with the surroundings. An attractive garden from small plants, flowers and vegetables alike, to large shrubs and trees is always a great feeling of satisfaction, and, to keep your plants always looking well and doing well, start a fertilizing program, using a good organic feed, as I mentioned at the first of this article, feeding your plants each month will be less costly and the results will be much greater.

Picking Garden Location Said Important Factor

By DON BERRY
County Extension Agent
Picking a good spot for your garden is as important as buying good seed and giving it good care.

A garden site that is level, well drained and in a sunny spot with rich, deep sandy loam soil, free of rocks, is most desirable, however since this is not possible with most home gardeners there are a few things every gardener should look for in planning the location of the garden spot. Most important is good drainage.

Often times vegetables will drown out if allowed to stand too long in water or very wet soil. Carrots are especially susceptible to drowning and too much moisture in badly drained areas deprive plant roots of air and nutrients needed for healthy development. Draining wet spots before preparing soil is also of benefit and the presence of green scum on the soil surface is one of the indications of excessive moisture. Where gardeners are unable to drain properly otherwise, planting on ridges will help.

Another important ingredient is plenty of sunshine. Direct sunlight for at least six hours a day is a must for leafy crops like lettuce, spinach, chard and kale. Others, like tomatoes, egg plants and peppers, will need more. Trees not only give excessive shade but their roots compete for moisture and plant foods.

One more important consideration in choosing a location is a good source of water. City water or irrigation water will afford protection against summer droughts, but in some local areas the deeper wells are salty which is detrimental to garden plants.

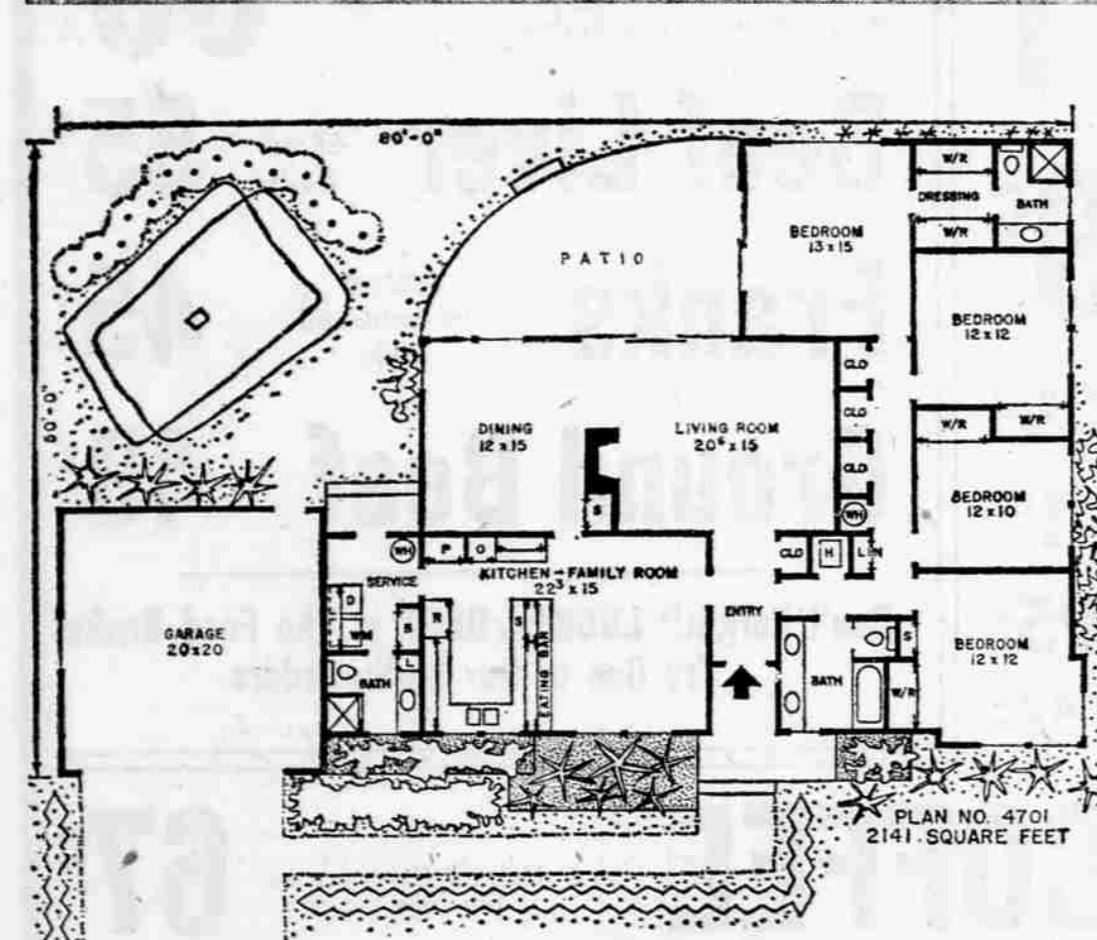
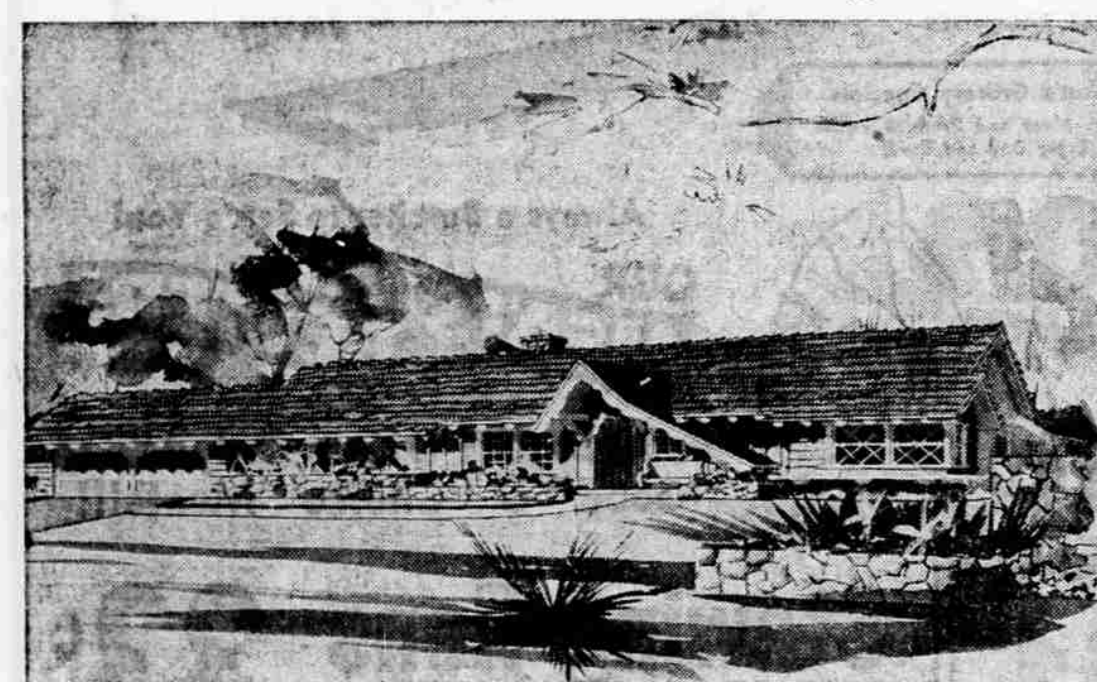
Generally speaking, a soil that is well drained and produces rank growths of weeds and grass will also produce good vegetables.

Fly Resistance Studied at OSC

Corvallis—An Oregon State college agricultural chemistry research team is on the track of determining how DDT kills houseflies. Their findings may lead to a possible breakthrough into the reasons insects develop resistance to insecticides.

The researchers have found a critical area where DDT acts in the fly's respiratory process for generating energy, and feel they are coming closer to pinpointing the exact reaction affected by the insecticide. Work is being done by Dr. LeMar F. Remert, associate chemist; Dr. Charles R. Heisler, assistant chemist; and Charles T. Gregg, research assistant.

This Week's Home For Living



The four bedroom home is becoming more and more popular because of today's large families.

In addition to this number of bedrooms, a family room is almost a "must" when planning a new home. Now a third feature is being demanded by a large number of new home owners — a separate dining room. This delightful home has been designed to satisfy all three of these preferences.

Hand hewed cedar shakes have been specified for the roof. Stone is used on the chimney as well as three planters. The planters heights, widths and lengths have been varied to provide the maximum interest to the exterior design. A diamond design trellis has been located between the top of the planter next to the garage to match the diamond paneled windows.

A large bay window has been included at the front bedroom wall to complement the front elevation. A hand sawed board has been used on the gable over the entry and a combination of horizontal siding and board and batts complete the front exterior.

If the wall space next to the dryer in the service is not required, a door may be located here giving direct access to the garage.

The three-quarter bath off the service would be very handy in case a swimming pool is ever built in the rear yard. Another three-quarter bath has been provided for the master bedroom and the main bath offers twin lavatories and a recessed water closet. All baths have pullman lavatories which will offer more than ample miscellaneous storage below.

The U-shaped kitchen features built-in appliances, a large pantry and an extra long eating bar next to the cabinets between the kitchen and family room.

A large storage closet for dishes, linens and other items is located in the dining room, next to the fireplace. Notice the unusual amount of closets and wardrobes in this home. A built-in storage closet is located in the front bedroom as well as a regular wardrobe.

Complete working drawing of the above plan can be obtained at a cost of \$7.50 for the first set and \$5 for each additional set, when ordered at the same time. This plan will be available for a period of four months from this date. Please allow two weeks for delivery. If the above home does not entirely meet your satisfaction, a new home plan book Homes for Living, may be purchased for \$1. Send all orders for either plans or books to Hiwatha Estes, P. O. Box 404-F, Northridge, Calif.

HERTZ TRUCK RENTAL

Available at
HOPKINS RICHFIELD SERVICE
McAndrews at Court
Phone SP 3-9068

MODERN ARTIFICIAL BREEDING
with
FROZEN SEMEN
FROM AMERICAN BREEDERS' SERVICE

- Offers PROGENY
- Performance-tested Beef Bulls
- Meeting the Requirements of the Performance Registry International
- Greater Profit-Potential

SP 2-4093
C. C. Williams
ROGUE VALLEY PROVED SIRE SERVICE