

**Humphrey Story
Error Misleading**

The story about Sen. Humphrey (D-Minn.) on Page 4 of yesterday's Mail Tribune contained a typographical error that caused an inadvertent misrepresentation of his views on the Tibet crisis.

According to the incorrect version, Humphrey said the United States "should offer resistance to the refugees fleeing Red rule." The word should be "assistance," not "resistance."

In the Day's News

By FRANK JENKINS

National economics:
Senator William Proxmire of Wisconsin asks the U. S. senate to investigate the effects of expanding American investments overseas. He says recent reports indicate heavy and substantially increasing purchases by American companies of foreign plants.

He says these foreign U. S. investments are costing us INDUSTRIAL JOBS and are cutting a terrible swath in America's export market.

WHAT he means is that American business concerns are finding they can PRODUCE CHEAPER ABROAD than they can produce at home. So they are buying foreign plants. In these foreign plants, their costs are enough lower to enable them to UNDERSELL goods produced in American plants. So, as Senator Proxmire says, they are cutting into America's foreign trade.

That isn't all. They can produce enough more cheaply in these foreign plants to enable them to INVADE THE AMERICAN MARKET with goods PRODUCED ABROAD. Foreign-built automobiles provide a well-known example of what is happening.

WHAT the Wisconsin senator is saying is that the United States is approaching a danger point. Because of steadily rising American prices, we are nearing the point at which we could price ourselves out of some very desirable markets.

We can't afford to price ourselves out of markets. But if American prices keep on going up in relation to foreign prices, that is exactly what is going to happen. If it does happen, a lot of Americans are going to be deprived of jobs.

AT THIS point, let's quote another senator—Oregon's Senator Neuberger. He says that in February of this year insured unemployment for the nation as a whole was 5.7 per cent while in Oregon 9 per cent of covered workers were out of work. In March, he says, the national figure was 4.8 per cent while in Oregon it was 6.3 per cent—and only six other states had a higher rate.

As a remedy, he proposes a federal commission on unemployment problems. He adds: "Because I believe that Oregon has borne more heavily than many other states the weight of the recession and the job losses which it entailed, I hope that the commission, when established, will hold hearings in my state in its efforts to discover, chronicle and solve problems of unemployment."

I HAVE great respect for Senator Neuberger's sincerity. But I doubt if an investigation by a federal commission would go very far toward the solution of Oregon's problems.

What Oregon needs is more industrial development. We must have more industrial plants to provide more jobs. If we are to get more industrial plants—to provide more jobs—we must provide an industrial climate that will be favorable to the expansion of industry in Oregon so that industrialists will be attracted to Oregon in which to operate. Federal investigating commissions merely talk. We've had plenty of talk in Oregon. We need ACTION.

**Arsonist's Insanity
Plea Turned Down**

Portland—(UP)—A Circuit Court jury Wednesday rejected the insanity plea of Darrell James Roesberg and found him guilty of arson in the first degree.

The 32-year-old tire repairman faces a maximum sentence of 20 years in prison. He had confessed to setting more than 23 fires in Portland last summer which resulted in about \$200,000 damage.

Bosbury, England—(UP)—Mr. and Mrs. S. W. Presley have a new baby. They have named it "Elvis." Mrs. Presley said, "He has a good strong pair of lungs already."

Piggly Wiggly's

**STORE-WIDE
VALUES!**

**Miracle Whip
Salad
Dressing**

Made by Kraft... the name that means wonderful salads

Quart Jar **49¢**



**General Mills
Cereals**

• Wheaties
• Cheerios
• Cocoa Puffs
• Hi-Pro • Jets
Reg. 29c size **4 PKGS \$1.00**

Enter the General Mills Cereals \$250,000 Sweepstakes Contest. If you are one of the grand prize winners and our store name is on your entry blank, we'll give you one year's supply of groceries (up to \$1,000) FREE. Full details at any Piggly Wiggly store.

Packed Locally
ELBERTA
**ROGUE RIVER
FREESTONE
PEACHES**

Halves or Slices
2 1/2 Tin 29¢

**and dozens
more money-
saving values
in nationally
advertised foods
shop PIGGLY WIGGLY
Get the BEST!**

PLANTER'S
Peanut Butter



18-oz. Jar **49¢**

Pard Dog Food

A balanced diet for Your Pet... 3 Tall Tins **53¢**

Folger's Coffee



A blend of savory mountain-grown coffees. Regular or drip grinds.
1-lb. Tin **69¢**

Dial Soap 2 comp. bars **29¢** Bath bar **20¢**

Calgon Water conditioner 2 1/2-lb. pkg. **75¢**

Calgonite For dishwashers 20-oz. pkg. **43¢**

Linit Starch 2 12-oz. pkgs. **39¢**

Niagara Starch pkg. **21¢**

**DOUMAKS PIXIE
MARSHMALLOWS**
White or Colored
2 10-oz. Pkgs. **35¢**

**REAL GOLD
ORANGE BASE**
3 6-oz. Tins **49¢**



**Mr. Peanut
in
Person
Friday
and
Saturday**

Planters
Peanut Oil
59¢ qt.

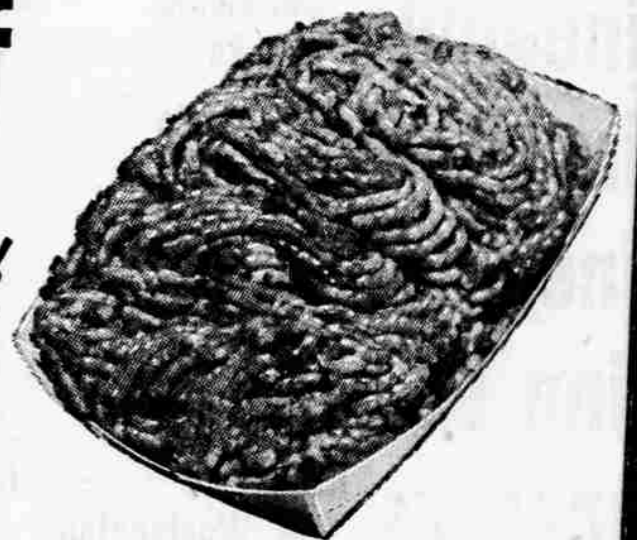
Sunshine
Hi-Ho Crackers 1-lb. pkg. **29¢**
Sunshine Cup Custard
Cookies 1-lb. pkg. **49¢**
Sunshine Butterscotch
Caramels 9-oz. pkg. **29¢**
Luxury 100%
Wh. Wheat Bread 15-oz. loaf **27¢**

They taste so good...
TV SNACKS PARTIES LUNCH TIME
PLANTERS
Cocktail PEANUTS **39¢** 7 1/4-oz. Tin

Ground Beef

Pure, lean beef for a tasty meat loaf or juicy hamburgers. You'll enjoy the freshness and flavor of this grain-fed, quality beef.

3 lbs. \$1.45 lb. **49¢**



Sliced Bacon Armour Star 1-lb. pkg. **69¢**

Pork Liver Fresh, sliced lb. **29¢**

Fresh Crabs From the Pacific lb. **39¢**

Pork Sausage Hormel 1-lb. cloth bag **59¢**

Hormel's Ready-to-Serve or Swift's Premium Fully Cooked

HAMS

An easy-to-prepare Sunday Dinner
Shank Half—lb. **49¢**

Nalley's
Chili Con Carne
WITH BEANS

15-oz. Tin **4 for 1.00**
33c Tin

Baby Week April 22 - May 2

Garber's Strained
BABY FOODS

12 for 89¢

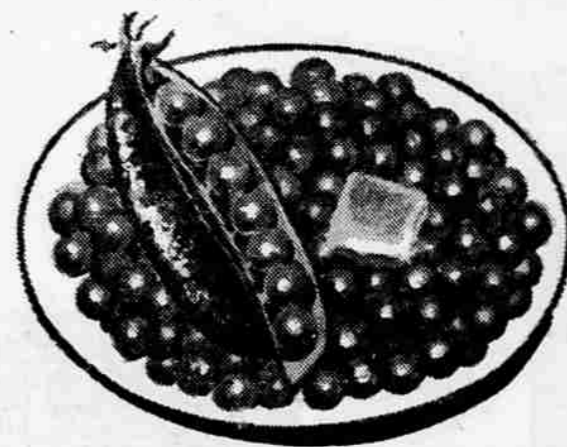


STEWART at KING STS.—MEDFORD
Acres of Parking Space — Open Every Day Until 9 p.m.

Low, low prices plus S&H Green Stamps at no extra cost



You save as you spend when you shop at Piggly Wiggly



Sweet Full Pods
NEW PEAS
2 LBS **29¢**

New Potatoes 5c lb. 10 Lb. Cello Bag **49¢**
Calif. Shafter White

New Red Potatoes 4¢ lb.
Small Creaming Size.

Lettuce 2 for **19¢**
Large, Crisp Solid Heads

Rhubarb 2 lbs. **29¢**
Fancy Washington

Delicious Apples 7 Lb. Tote Bag **69¢**
Crisp, Local Grown Red

Fresh Strawberries — Cantaloupe — Watermelon
Fresh Asparagus — Leaf Lettuce — Romaine Lettuce

Bonneville
Sweet Pickles
22-oz. Jar **35¢**



Giant Size
Nestle's Bars
Milk Chocolate or Almond
Giant Bar **39¢**