

Petitions Circulated by Group Regarding School Dance Class

Petitions for making dance classes voluntary to prevent alleged "discrimination" against children whose churches oppose dancing are reportedly being circulated in School District 6C.

Jean M. Shelley, chairman of the group initiating the petitions, said Friday that their object is not curtailment of dancing activities in the schools but merely a revision in administrative procedure.

Excused by Note
Under the present method, it is understood, children opposed to square dancing folk dancing or other social dancing taught in the classes may be excused by a note from their parents.

Submitting these notes, Shelley said, places the children unnecessarily in the public eye. "Oregon law," he said, "requires that any child's religious principles be kept in confidence."

"We feel," the petition states, "that the discrimination now felt by many of our children on the dance problem is a violation of their constitutional rights."

School Superintendent H. P. Jewett replied Friday that the district is administered "according to regulations laid down by the state board of education." He said that pupils excused from dance classes can read in the library or study other subjects. "They are not forced to do anything," he added.

Want Elective Course
The petitioners, as Shelley explained it, wish the dance classes to be, in effect, electives. They suggest that a form for stating a positive desire to participate be sent to all parents.

Children of those parents who sign and return the forms would receive the dance

instruction according to this plan. Others would be assigned to alternate activities, preferably another type of physical education.

According to Jewett, 32 pupils of the 800 enrolled in grades three through eight have asked to be excused from dance classes this year. Jewett explained that in the junior high school, as one example, the classes are held as a 40-minute period once a week over an 11-week span.

Future Protection
Shelley called the figure of 32 pupils "misleading" since, he asserted, other pupils despite school policy have been excused by individual teachers without a note being required. He then explained that the petitioners are particularly interested in future protection of their rights.

The petition points out that putting the dance classes on an elective basis would be comparable to the present procedure for participation in Bible history classes. Jewett replied that while the dance classes are included in the state board's curriculum the voluntary Bible history classes are "entirely outside it."

Shelley stated that over 200 persons have signed the petitions so far. He reported that 52 parents and representatives of eight churches met at the Church of Christ, Central Point, earlier this month. Some petitions, he said, were turned in at this meeting while others are still in circulation.

A resolution similar to the petition was submitted to the school board last December, Shelley said. He explained that the petitions would be submitted to the board some time before its July meeting. Those endorsing the resolution besides himself, Shelley

reported, included the Rev. Paul Kroon, Community Bible church; the Rev. W. H. Johnson, Pentecostal Church of God; the Rev. James Pack, Pentecostal Church of God; the Rev. Clarence Jackson, Pilgrim Holiness church; Earnest Ralls, Country church; Joseph Bowdoin, pastor of Medford Community church, a resident of school district 6C; Lester Wilcox Jr., of Forest Acres Community church; the Rev. Gordon Peterson, Sams Valley Gospel church; Jewell Bennett, Church of Christ, Second st.; Fred M. Brown, Missionary Baptist Sunday school; the Rev. Lyman Stiles, Joe N. Buchanan and Emery Abel, Assembly of God; and C. W. Powell, radio minister.

Medford's Oldest Firm Observes 75th Anniversary

Hubbard Brothers, Medford's oldest business, is observing its 75th anniversary with a 10-day sale to continue through April 25.

The company, started in 1884 in Jacksonville by Ashel Hubbard, was moved within a few months to Medford. The firm is now owned and operated by sons of the founder, Chester and Roland Hubbard.

The store has been located on two sites other than the present 335 East Main st. address, but all in the same general area. The business has been at its current location for approximately 55 years. The present structure was built several years later.

The firm, when started 75 years ago, sold farm machinery gradually expanding to include hardware, the owners reported. More than 20 years ago the two departments separated establishing two stores. During the anniversary ceremonies all persons who stop by the store may register for prizes.

EXPATRIATE DIES
Cannes, France - (UPI) - Mrs. Mary Elsie Clews, 78, a leading member of the expatriate American colony on the French Riviera, died Wednesday. A native of Philadelphia, she was the widow of American painter and sculptor Henry Clews.

Medford Schools to Hold Art Exhibits

A cross section of creative art effort among Medford schools will be displayed early this week in the boys gymnasium at Medford high school. The Art Students League is sponsoring the event.

A variety of media and expression will be shown, according to Miss Judy Wymore, president. Art Instructor Warren Wolf is supervising the show.

Grade school exhibits will be displayed Monday evening; high school, Tuesday; and junior high, Wednesday. The public is invited to view the three-evening event, Miss Wymore reported.

THE ANSWER IS NO

Dallas, Tex. - (UPI) - County Treasurer Warren G. Harding said he'd had a pleasant chat in the courthouse corridor with a stranger who told him he had just been indicted on three counts of passing bad checks. Harding said the conversation ended when the man asked: "By the way, I wonder if you would cash a small check for me?"

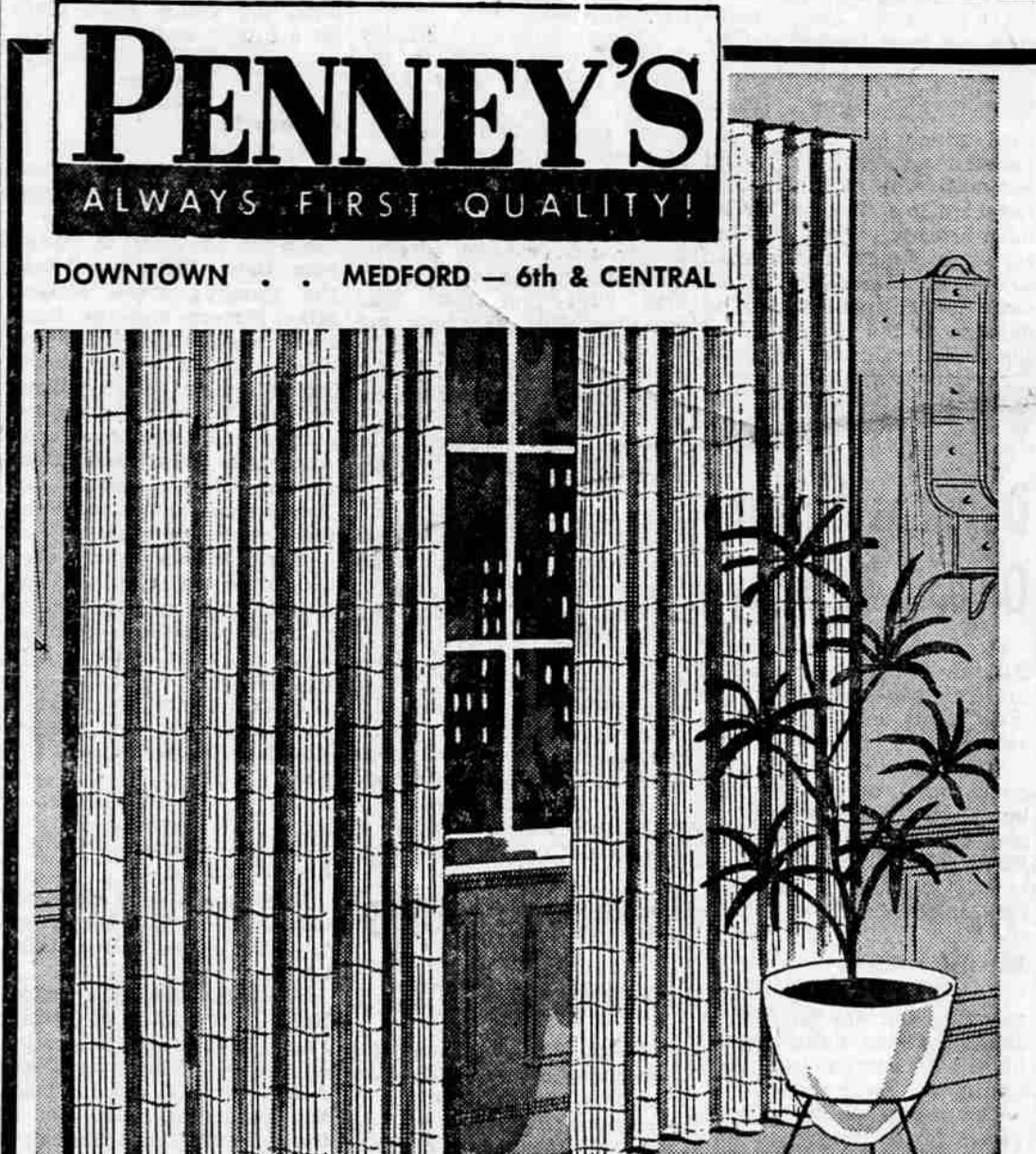
Tax Commission Mail Load Heavy

Salem - (UPI) - Forty-five sacks of personal income tax mail arrived at the State Tax Commission offices here Thursday. That total was one and one-half sacks less than the volume received April 16 last year. Another fairly substantial

MAIL TRIBUNE, Medford, Oregon, Sunday, April 19, 1959 7

volume was expected later since returns from faraway points require more time to be delivered here. At least half of the estimated 600,000 returns received are expected to involve refunds on taxes withheld from wages. It is estimated that between 300,000 and 325,000 refund checks will be sent out by the commission this year, compared with 339,000 in 1958. Processing of returns has been going on since the first of the year, with some 80,000 refunds already mailed.

G. A. RASMUSSEN
• Painting
• Paperhanging
CALL SP 3-3881



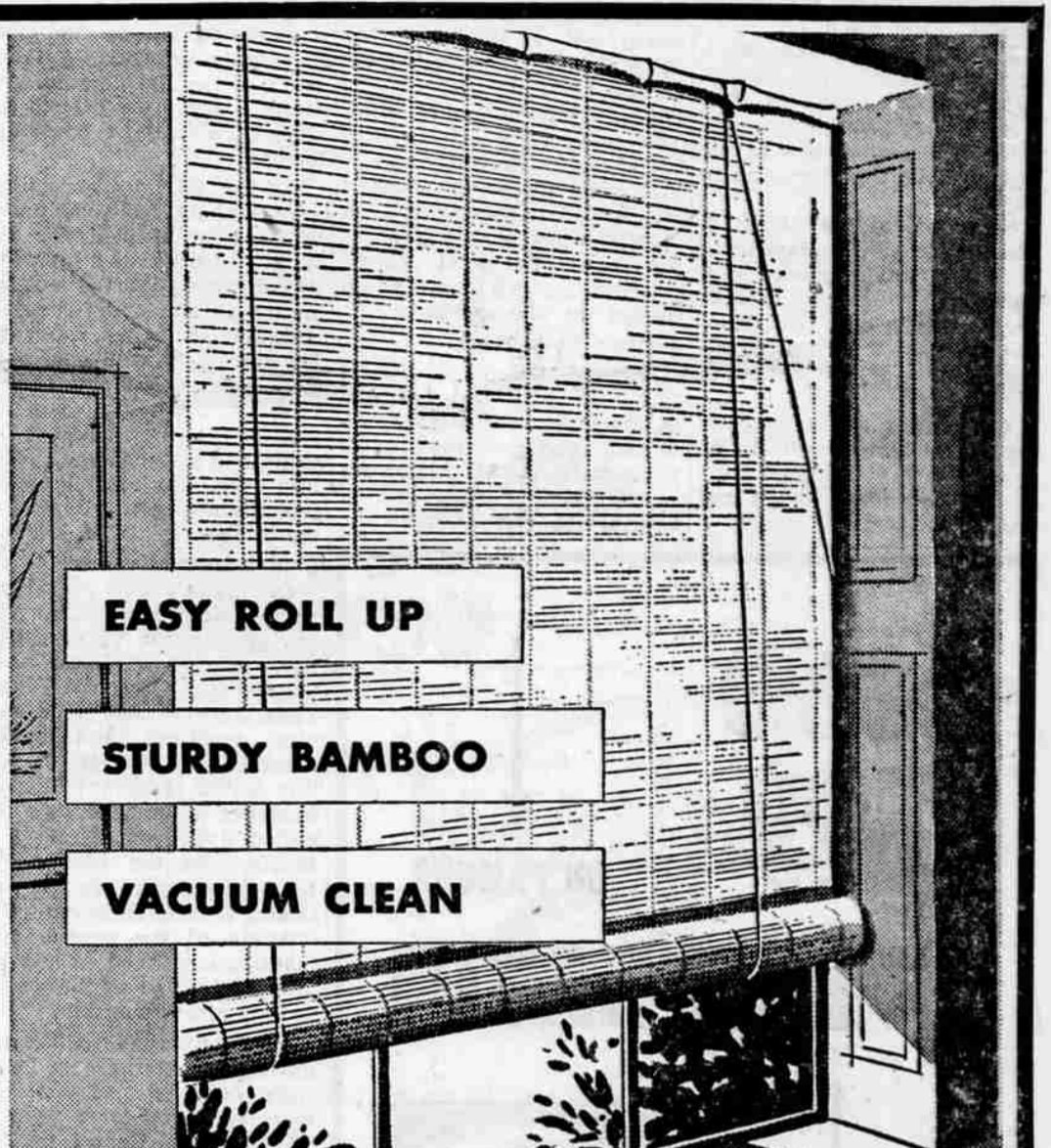
PENNEY'S
ALWAYS FIRST QUALITY!
DOWNTOWN . . . MEDFORD — 6th & CENTRAL

MATCHSTICK BAMBOO DRAW DRAPES 2⁹⁸
48"x54"
Save! . . . Penney's Price is by the pair!

Regular full 84" length Higo matchstick bamboo in wide widths for those large areas. Complete with heading tape. Ready to hang to your windows. May be pleated to any degree of fullness. Natural color only and priced by the pair.

MATCHSTICKS CAFES 1²⁹ pr.
30" x 36"
Practical and cute are these matchstick bamboo cafes. Cotton heading tape and in natural color only.

FIESTA CAFES 1⁹⁸
30" x 36"
52"x9" valance . . . 69c each
Colorful paint splattered fiesta bamboo cafes. Ready to hang. A world of colors to select from.



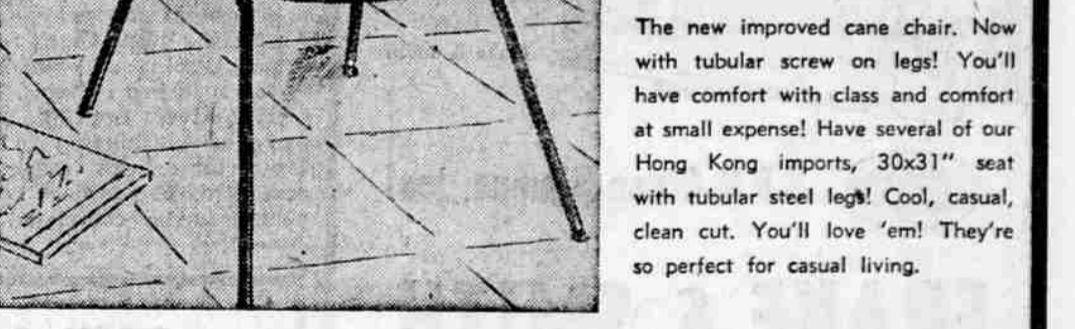
1/2 Inch SLAT ROLL-UP BAMBOO BLINDS 98^c
3' by 6'

Summer heat out, insure privacy . . . 3' by 6'

Top quality 1/2 inch inside peel slats complete with hardware, rollers, etc. Enjoy sipping and sipping pleasure on your porch this summer with hot sun and insects screened out. Enclose your porch with Penney's easy-roll-up blinds. Use 'em year after year. Won't fade or tear. Easy to clean with vacuum or damp cloth. Don't miss this Penney bargain!

PEEL CANE BASKET CIRCLE CHAIRS 4⁹⁸ ea.
NEW LOW PRICE!
Large 30" x 31" Seat

The new improved cane chair. Now with tubular screw on legs! You'll have comfort with class and comfort at small expense! Have several of our Hong Kong imports, 30x31" seat with tubular steel legs! Cool, casual, clean cut. You'll love 'em! They're so perfect for casual living.



Try and Stop Me

By BENNETT CERF

MR. NUSSBAUM loved a bridge game, but hated a kibitzer breathing down the back of his neck. Furthermore, this kibitzer was the most irritating kind—always ready to explain how an extra trick could have been made. Nussbaum's moment of triumph came when he made a grand slam, vulnerable, doubled and redoubled. "All right, wise guy," he gloated to the kibitzer, "what was wrong with that?"

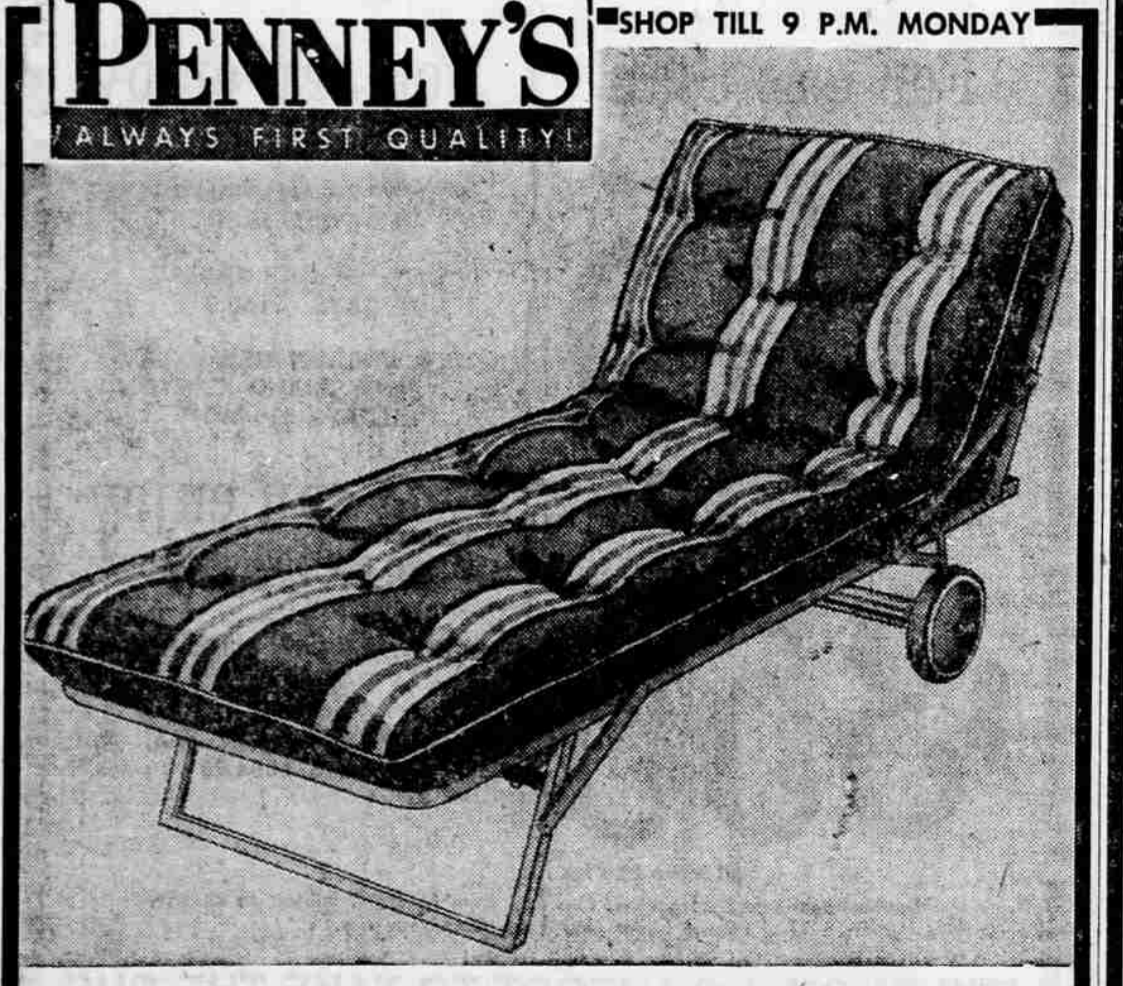


"Just two things," said the kibitzer promptly. "One, if you had bid properly, you never would have reached a grand slam. Two, playing the hand correctly, you never would have made it!"

"Modern music," suspects Goddard Lieberman, "is the kind that is played so fast it's almost impossible to detect what classical composer it was stolen from."

Sign above a baseball manager's desk: "It's amazing how many people have 20-20 hindsight!"
© 1959, by Bennett Cerf. Distributed by King Features Syndicate.

TOSTESEN
Quality
• Decorating
• Painting
• Paperhanging
SP 2-7503

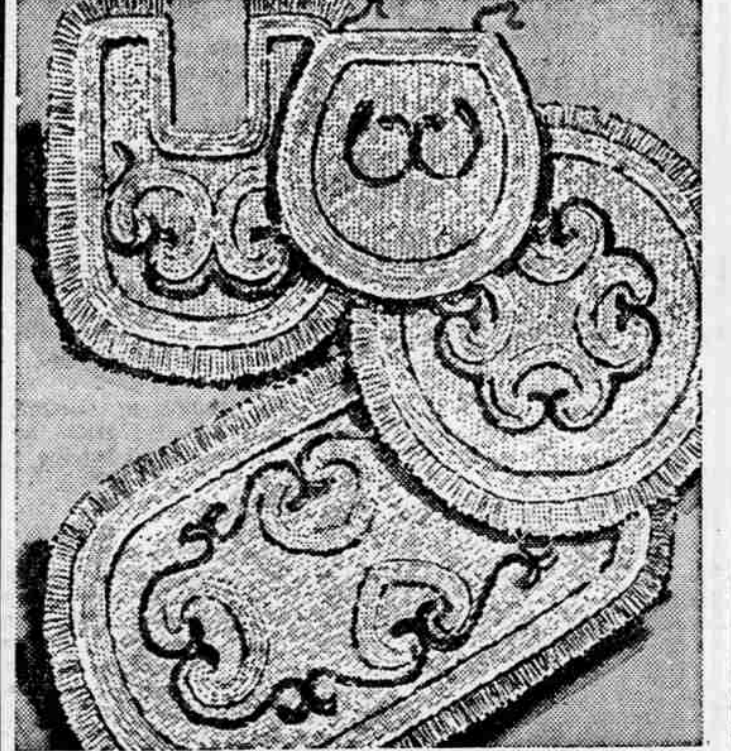


Another Penney Bargain

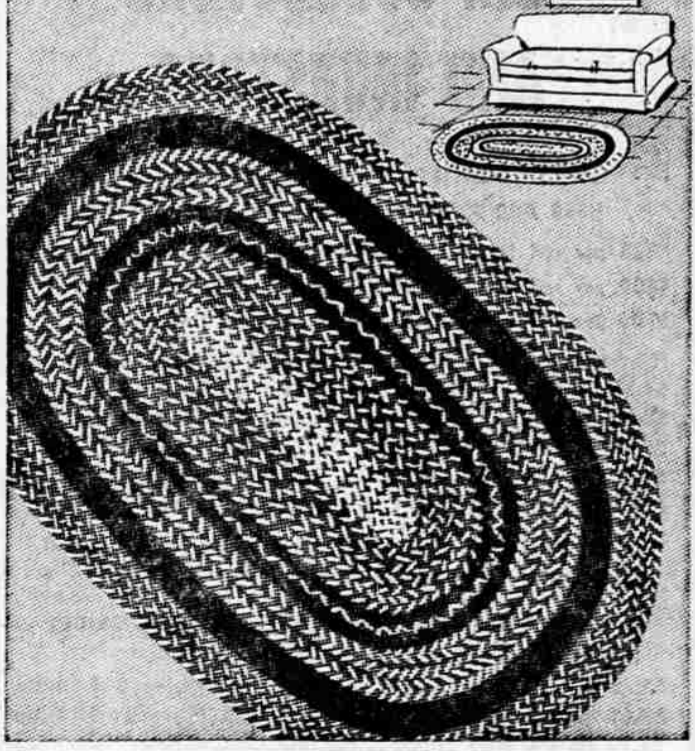
You get both for one low price!
ROLL-AROUND CHAISE WITH STRIPED PAD! Special!
13⁸⁸

The chaise is a sturdy aluminum-finish steel that folds compactly for easy storing. Spring-and-link base, big 5-inch wheels, adjustable back. The pad is cotton-filled, button-tufted, covered in durable striped cotton drill. A terrific value.

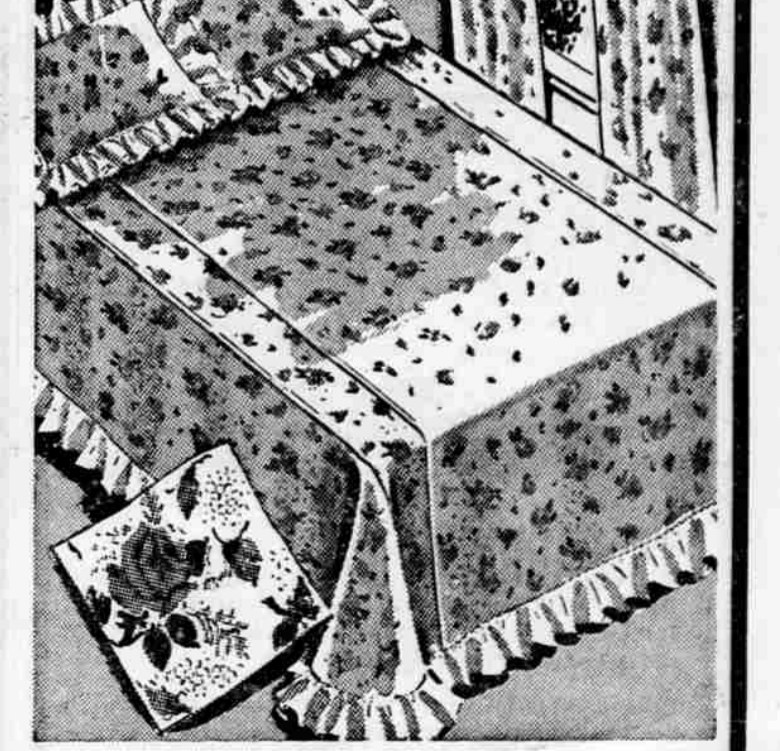
Replacement Chaise Pad Only \$4.98
SHOP PENNEY'S COMPLETE PATIO SHOP AND SAVE!



3-PC. BATHROOM SET
Deep sculptured rayon-nylon! Low priced for such features! These add 2 1/2% nylon for wear, Lurex® for glitter! Non-lint; machine-wash*. White, pink. Toilet base mat, 1.88; lid cover 88c.
27 inch round . . . 1.88
25x37 in. oval mat 2.88
*in lukewarm water



OVAL BRAIDED RUGS 19⁸⁸
5'10" x 8'9"
Fabulous viscose rayon and wool for lasting quality, natural resiliency blended in beautiful color combinations. Save now!
OTHER SIZES AT EQUAL SAVINGS!
22"x34" size . . . 1.88
22"x44" size . . . 2.44
34"x54" size . . . 4.88
44"x68" size . . . 7.88
8 ft. 8" x 11 ft. 7" size . . . 34.88



FABULOUS EASY-CARE EMBOSSED ROSE PRINTS SPECIAL \$5.
Beautiful, work-saving, so low priced! Crisp embossed cotton, machine wash (luke-warm water). Rose, brown or blue on white.
Pillow sham. 1.75
twin, full