

**MEDFORD MAIL TRIBUNE**  
"Everyone in Southern Oregon Reads The Mail Tribune"  
Published Daily except Saturday by MEDFORD PRINTING CO.  
33 North Fir St. Ph. SP 2-6141  
ROBERT W. RUHL, Editor  
HERB GREY, Advertising Manager  
GEOFFREY LATHAM, Business Mgr.  
ERIC W. ALLEN, Jr., Managing Editor

EARL H. ADAMS, City Editor  
HARRY CHIPMAN, Teleg. Editor  
RICHARD JEWETT, Sports Editor  
OLIVE STARCHER, Women's Editor  
DALE ERICKSON, Circulation Mgr.  
An Independent Newspaper  
Entered as second class matter at Medford Oregon under Act of March 3, 1879

**SUBSCRIPTION RATES**  
By Mail—In Advance, Copy 10c  
Daily and Sunday—1 year \$15.00  
Daily and Sunday—6 mos. \$8.00  
Daily and Sunday—3 mos. \$4.25  
Sunday Only—One year \$4.20  
By Carrier—In Advance—Medford, Ashland, Central Point, Eagle Point, Jacksonville, Gold Hill, Phoenix, Shady Cove, Rogue River, Talent and on motor routes  
Daily and Sunday—1 year \$18.00  
Daily and Sunday—6 mos. \$10.00  
Carrier and Dealers—copy 10c  
All Terms Cash in Advance

Official Paper of City of Medford  
Official Paper of Jackson County  
United Press International  
Full Licensed Wire  
MEMBER OF THE  
NATIONAL EDITORIAL ASSOCIATION  
APPLIANT MEMBER

**Flight 'o Time**  
Medford and Jackson County  
History from the files of The Mail Tribune 10, 20, 30, 40 and 50 years ago.

**10 YEARS AGO**  
April 13, 1949 (Wednesday)  
Medford city councilmen debate, but fail to decide, whether residents should be asked to help finance the Hawthorne park pool project.  
Tony Manno is elected new president of the Medford YMCA.

**20 YEARS AGO**  
April 13, 1939 (Thursday)  
The Holmes brothers develop a subdivision at Stewart ave. and Kings highway just south of town.  
From Arthur Perry's "Ye Smudge Pot" column: "In answer to the farmers' prayers for rain, a smattering fell Wed. eve on the Baptist church parking space grass, and the first straw hat of the season."

**30 YEARS AGO**  
April 13, 1929 (Saturday)  
Vagrant dogs in the city are to be held three days at the pound before execution.  
Rogue River cannery installs new machinery to increase its output.

**40 YEARS AGO**  
April 13, 1919 (Sunday)  
A labor shortage in the valley inspires threats that loafers will be ordered to work or leave.  
The campaign started to finance the P. & E. road will be junked unless given financial aid.

**50 YEARS AGO**  
April 13, 1909 (Tuesday)  
The Medford Commercial club considers asking Congress for \$1 million to improve Crater Lake national park.  
The weather bureau flies flags from atop the Duell and Kentner building to warn of frost.

**What's Your I.Q.?**  
Nine or ten correct is superior; seven or eight is excellent; five or six is good.  
1. Jackson Day dinners are held by the Republican, or the Democratic party?  
2. What famous baby is named Yasmin?  
3. What is another name for the woodchuck?  
4. For what object did Sir Galahad, in the Arthurian legends, conduct a successful search?  
5. Copra is obtained from what?  
6. On what date does the fiscal year of the U. S. commence?  
7. A female sheep is a ewe; what is the male?  
8. Correct the following: "Each of the soldiers must keep their uniforms neat."  
9. Do you associate the name Daguerre with the development of printing from moveable type, photography, or telegraphy?  
10. Are fresh fruits high in protein content?  
Answers: 1. Democratic. 2. Daughter of Rita Hayworth and Ali Khan. 3. Groundhog. 4. Holy Grail. 5. Coconuts. 6. July 1. 7. Ram. 8. "... must keep his uniform neat." 9. Photography. 10. No.

**STOCKBROKER DIES**  
New York (UPI)—William W. Peabody, 93, a stockbroker here for 55 years, died Saturday.

### What Is Education For?

(Editor's note: The state board of education recently adopted a "Philosophy of Education," a statement of its beliefs about the nature of man, the nation's culture, and the role of the school. Because of its widespread interests, the portion of the document dealing with the role of the school, and its objectives, is presented below, slightly condensed.)

The school is a major institution through which our cultural heritage is transmitted and by means of which the members of society are prepared to evaluate changes. The intellectual development of each member of society, to the degree that he is able to profit thereby, is the primary responsibility of the public school.

The school shares with other institutions and agencies such as the home and the church the responsibility for the physical, social, emotional, aesthetic, moral and spiritual growth of individuals.

THE objectives of education grow out of and reflect society's understanding of and beliefs about the nature of man, the nature of society itself, and the concept of the role the school plays in the culture. New insights or understandings growing out of experience or research in any of these areas are reflected in the objectives of the school.

The following specific objectives of education in Oregon are derived from (our) beliefs about man and his culture . . . and form the basis for the framework of public school education.

**CITIZENSHIP:**  
The good citizen knows his country — its people, its history, its geography, the structure and function of its government, and its internal and external problems. He understands the fundamental principles of American democracy — political, economic, social, moral and spiritual.

He is loyal to American ideals, is proud of his heritage, respects constituted authority, has concern for the welfare of his country and of his fellow men at home and abroad, and seeks ways to increase world cooperation toward a just peace. He participates in the life of his community, state and nation by exercising his rights and assuming his responsibilities as a member of a free and self-governing society, and he strives to improve it.

**BASIC Skills of Communication:**  
The effective citizen has, to the extent of his ability, achieved proficiency in use of the basic tools of learning. He recognizes that communication is fundamental to intellectual development and has acquired skill in receiving ideas through reading, listening, and observing, and in expressing them through writing and speaking. He understands the use of symbols from other fields such as mathematics, science, music and the visual arts, and may have extended his range of communication by mastering other languages.

He recognizes that learning is continuous throughout life. He employs the basic skills efficiently to gather, organize, and disseminate information, to think critically, to solve problems, and to gain enjoyment.

**HEALTH:**  
The educated person knows the structure and functions of his body, is aware of hazards to his own and his community's well-being, and knows desirable mental and physical health practices . . . based upon factual information.

**FAMILY Life:**  
The effective family member has knowledge and skills which result in the wise use of money, time and energy; the provision of adequate food, clothing and shelter; the care, training and guidance of children; and the interrelationships among members of the family and with the community.

He recognizes the family as the basic institution of our society, and also its changing role . . . He has an appreciation, respect, loyalty, and a sense of responsibility for his own home . . .

**ECONOMIC Life:**  
The educated person has a knowledge of our natural and human resources and of the necessity for their wise use and conservation. He understands the workings of the economic system in our society and he has some comprehension of other systems . . .

He appreciates the value of labor and feels satisfaction in doing any task well. He earns his way in the world . . .

**MORAL and Spiritual Values:**  
The educated person has gained an insight into moral and spiritual values. He knows the main facts of the history of religions . . . and the role of our national ideals. He is familiar with the significant contributions of literature, art, music, science and other fields of learning to moral and spiritual growth.

He seeks support in a faith that upholds the virtues of goodness and morality and which explains and reconciles his relationship to fellow men and the universe. He regards devotion to truth and services to fellow men as a high goal . . . He places human values above material things. He is humane and considerate . . . He has sympathetic understanding of differences and deviations . . . He opposes all forms of tyranny over the human mind . . .

**AESTHETIC Values:**  
The educated person has developed sensitivity to aesthetic values. He can discriminate . . . He observes, appreciates, and wants to preserve the things of beauty provided by nature or produced by man . . .

### Dennis the Menace



"DENNIS PAINTS A BOLD, IMAGINATIVE, COMPLETELY UNINHIBITED PICTURE, WHICH FIGURES."

### Washington Report

By WILLIAM S. WHITE

**FACING THE FACTS**  
Washington—A great mental expert testified in a murder case that drunkenness was "the temporary loss of the power of self-criticism."

They show, too, a heavy decline in urban Republican voting right alongside a significant, if lesser, decline in rural Republican voting. Worst of all, from the GOP viewpoint, Democratic net gains are progressively rising in the part of the country that is growing the fastest, the area west of the Mississippi River.

And this is not all. Census forecasts for 1960 indicate that old line Republican states like Ohio and more-or-less Republican states like Pennsylvania are falling far behind in the population race. But traditionally Democratic states like Texas, and presently Democratic states like California, are burgeoning beyond all previous estimates. Texas will vault into fifth place among the states, ahead of Ohio. California will pass Pennsylvania for second place. And so on.

The new mood of self-examination within the GOP has not arrived a moment too soon. The party can thank its professionals for resolutely taking the facts straight. (Copyright, 1959, by United Feature Syndicate, Inc.)

**THE PRINCIPAL** contestants look eager for the fray, but they are not. Senator Humphrey did not want to fight for Wisconsin because of the fairly strong possibility of defeat. Hence Humphrey's political partner, Gov. Orville Freeman of Minnesota, tried to wrap up Wisconsin by the favorite-son device, with the help of his friend, Governor Nelson. That did not work, and now Humphrey has made up his mind to fight. But Senator Kennedy is now having his second thoughts. Kennedy wonders whether he needs to risk his massive support in other states in a messy, chancy Wisconsin primary.

All the same, the logic of the situations of the two active Democratic candidates makes them the fore-ordained victims of one another. The inactive candidates may remain inactive, but Humphrey and Kennedy are all but forced to fight it out.

Outside his home territory, Humphrey has almost no solid support anywhere. Furthermore, his nomination will drive large numbers of Southerners out of the party. Hence he must decisively prove his magnetism by defeating the

structure is more liable to earthquake damage. It is beyond understanding to this writer and many others as well that the most valuable land in the valley can be had to bury in it those who are all finished with life, including the hideous honey-combed type receptacles, but none can be had to route the new freeway via the open hill country around the still pretty and healthful city of Medford, whose people, still living, should have as much consideration as the dead.

As was so pertinently stated in a recent M-T editorial of the wishy-washy side-stepping legislature in the capitol in Salem, it seems to this writer there is much of the same going on in Medford. F. J. Clifford, Route 2, Box 200F, Central Point

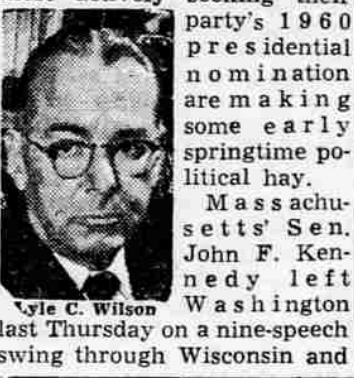
**Ladies Fair**  
To the Editor: In all the valleys of our land, no girls are half as fair. As they who live along the Rogue when smudge gets in their hair. (Name on File) Medford

**A Last Warning**  
To the Editor: Just one last warning before the Bear Creek overpass freeway becomes a reality. Word from Southern California tells of real danger troubles along the modern free-ways, heavy traveled streets and parking lots. The deadly carbon monoxide gas, from car and truck, blankets the ground in all directions near such locations. (It's the same gas that from a small engine is used to snuff out the lives of unwanted dogs, cats, etc.) It has long been known that houses breathe, heated air during the day being expelled and as it cools at night, is sucked back in, and with it, the lethal carbon monoxide gas from gas-burning vehicles.

New home-seekers from down California way tell of the problem it imposes on health authorities there. Restrictions in the past have been placed on the height of buildings because of earthquake risk. But the health risk of this exhaust gas is of even more immediate concern. So, plans are said to be afoot to encourage people to build two or even three story houses so people can sleep in the more gas-free upper floor levels, even if such type of house

### Kennedy, Humphrey Making Springtime Political Hay as Election Year Looms

By LYLE C. WILSON  
Washington—Two of the Democratic senators who are most actively seeking their party's 1960 presidential nomination are making some early springtime political hay.



Lyle C. Wilson

Massachusetts' Sen. John F. Kennedy left Thursday on a nine-speech swing through Wisconsin and

Indiana. He spoke first on Friday at the University of Wisconsin in Madison, and has continued to speak thereafter on just about all occasions. The swing is scheduled to end with a speech before Democratic diners today at Decatur, Ind.

Kennedy was down for a speech Saturday at Appleton, Wis., hometown of the late Sen. Joseph R. McCarthy. Mrs. Eleanor Roosevelt has been gunning for Kennedy on charges that he is not forthrightly on record with respect to the issue she describes as

"McCarthyism." Kennedy was hospitalized at the time the McCarthy censure resolution was voted in the Senate. His illness had developed from wartime injuries. Mrs. Roosevelt has indicated that she would oppose Kennedy for the 1960 presidential nomination but would accept him as the vice presidential nominee.

**Her Favorite**  
Sen. Hubert H. Humphrey (D-Minn.) looks more like Mrs. Roosevelt's favorite and the favorite of the left wing, in general. He spoke in Westchester County, New York, and in Boston last week end. Humphrey will address a Jefferson-Jackson Day dinner in Minneapolis on April 18 and thereafter take off on his first big scale invasion of the West. Press aides and the retainers usually in tow of a presidential aspirant will accompany Humphrey. He will speak in

Washington, Oregon, California, Utah and Wyoming.

Humphrey should find the far westerners congenial, at least, although they may not yet be ready as a body to climb aboard his bandwagon. The left wing is on the up among western Democrats, however, and Humphrey should feel pretty much at home. His principle political problem lies in the South.

The problem in the South seems to be less whether Humphrey can get or expect any delegate support from southern Democrats than it is a question whether or not a great many of them would pick a presidential ticket if Humphrey had the top spot. There are Democrats in the South who do not care for Humphrey. They are the party men and women who remember well the Democratic national conventions of 1948 and 1952.

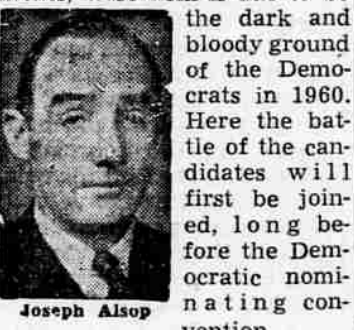
**Civil Rights Defender**  
It was Humphrey in 1948 who rammed the party-splitting civil rights plank into the Democratic platform. That led to a Dixiecrat or state's rights bolt which chipped some presidential electors away from the Democratic ticket. Harry S. Truman was elected despite that or—as some unhappy Republicans put it—the Republican nominee, Thomas E. Dewey of New York, snatched defeat from the jaws of victory.

Humphrey's pulse feeling in the South has been limited so far to Florida and to Tennessee which, regardless of geography, are not counted as politically of the deep South. Humphrey was well received in Florida and Tennessee. Mississippi might be different.

### Matter of Fact

By Joseph Alsop

**THE DARK AND BLOODY GROUND**  
Madison, Wisconsin—Barring unforeseen developments, Wisconsin is due to be the dark and bloody ground of the Democrats in 1960. Here the battle of the candidates will be joined, long before the Democratic nominating convention.



Joseph Alsop

After a Siberian winter, this little state capital looks weather-worn but outwardly tranquil. Yet here in Madison, as elsewhere in the state, you can already hear the advance rumblings of the conflict that lies ahead. For instance, the astute young Democratic governor, Gaylord Nelson, is already rather nervously proclaiming that his party's Wisconsin primary has got to be a free and fair fight, with all holds barred, and no unkindly feelings about the outcome.

Nelson has good reason to start talking early, too. The front-runner for the Democratic presidential nomination, Sen. John F. Kennedy of Massachusetts, stormed into Milwaukee on Thursday, and he has been attracting capacity crowds ever since. The other active Democratic candidate, Sen. Hubert Humphrey of Minnesota, is coming very soon.

IN ADDITION, Wisconsin should afford a fair test between Kennedy and Humphrey. Superficially, to be sure, the locale of the duel would seem to favor Humphrey. The Wisconsin pattern, of a union between the original Democrats and the LaFollette Progressives, is closely similar to the Minnesota pattern of a Democratic-Farmer Labor Alliance, which Humphrey helped to bring about. When both Wisconsin Senators were Republicans, many local Democrats actually treated Humphrey of Minnesota as their own Senator. Moreover, Humphrey has powerful support in the labor groups, in the farm cooperatives, and in the rural electrification associations.

Rather surprisingly, however, Kennedy still quite clearly has the edge, at least as of now. A majority of the Wisconsin politicians are leaning his way. Even those who are for Humphrey tell you, "Yes, Kennedy's ahead today, but wait and see how it shapes up after Humphrey has done some of his old-fashioned, hard-sell campaigning in the state."

Part of Kennedy's edge derives from Wisconsin's high percentage of Roman Catholics. But in the main, according to the local politicians, the Kennedy edge has to be attributed to his remarkable general appeal to all groups in the voting rank and file. If the appeal does not weaken, that is a pretty useful sort of edge to have.

(c) 1959 New York Herald Tribune Inc.

**CALL TRANSIT STRIKE**  
Rome (UPI)—Rome street car and bus workers have called a strike for Wednesday. They are seeking higher wages.

**FALSE TEETH**  
That Loosen Need Not Embarrass  
Many wearers of false teeth have suffered real embarrassment because their plates dropped, slipped or wobbled at just the wrong time. Do not live in fear of this happening to you. Just sprinkle a little FASTEETH, the alkaline (non-acid) powder, on your plates. Hold false teeth more firmly, so they feel more comfortable. Does not sour. Checks "plate odor" (denture breath). Get FASTEETH at any drug counter.

**PILEY?**  
3 Day Relief—No Messy Salves  
New, easy-to-use tablets work from within to give you relief from the agonizing pain of simple piles. Swelling reduces, gain control! Mail \$3.00 for 3-week supply to BELL-ETS, Orangeburg, N. Y. Satisfaction guaranteed by the makers of Bell-ans for indigestion.

### Russia Asked To Agree To Ban on High Explosions

Geneva (UPI)—The United States today asked Russia to accept an immediate ban on atmospheric atomic explosions and settle the question of underground tests later.

The U.S. move to break the long-standing nuclear conference deadlock was put forward by Ambassador James J. Wadsworth as the three-power discussions resumed here after an Easter recess. U.S. sources said that the atmospheric ban, which would reduce the problem of radiation danger, would cover explosions up to 30 miles in altitude.

It thus would not cover the type of outer-space shots completed last September in the U. S. Argus Project. Western sources said after a short 70-minute conference opening session that Wadsworth had indicated if the Russians accepted the atmospheric ban, a further agreement on stopping underground explosions could be worked out later.

**Major Shift**  
The U.S. proposal appeared to signal a major shift in western nuclear policy worked out during the three-week Easter break. Both the American and British delegations have insisted in the past that only a comprehensive ban on all atomic weapons tests, both above and below ground, would be acceptable.

**Graham's Eye Giving Trouble**  
Sydney, Australia (UPI)—Evangelist Billy Graham has a recurrence of an old eye complaint but will not restrict his Sydney crusade, it was reported today. But after Tuesday when he addresses a special convocation of students at Sydney university he will not speak at any additional meetings. He addressed 100 clergymen today on evangelism. Graham has been under strict medical supervision for eye trouble since he left America in January. The ailment delayed his Australian tour of two weeks.

### See! Hear!

new, marvelous "letterhead size"



"1500" Wollensak

DUAL SPEED TAPE RECORDER  
With 10 watts Push-Pull Audio Output

Here is the marvel in compactness, portability, power and fidelity. Included are such sensational features as: measures 6 1/2" x 10 1/4" x 1 1/4"—weighs only 18 lbs.—tape speeds—3.75 and 7.5 i.p.s.—"Balanced-Tone" High Fidelity—simplified Keyboard Control—exclusive high speed rewind lever—two-level recording indicator—precision index counter.

\$199.50

Complete with microphone, 2 reels (one with tape) and cords.

### PURUCKER

MUSIC HOUSE  
111 No. Central  
Phone SP 2-5702

### Reasonable Funerals

(Priced for Everyone)



Frank Perl

### PERL Funeral Home

Phone SP 2-6675  
LADY ATTENDANT

FRIENDLY, HOMELIKE ATMOSPHERE