



**NEW BONNEVILLE CONVERTIBLE**—Unprecedented styling innovations, resulting in a lower, wider car, give the 1959 Pontiac Bonneville convertible a dramatically new appearance. Dean and Taylor Pontiac company are the Medford dealers. The convertible has seats trimmed in leather and Morrokide, is mounted on a 124-inch wheelbase chassis with an overall length of 220.7 inches. Front bucket seats are optional. The four-door Vista hardtop and richly appointed Safari supplement the Bonneville.

**Water Test Given Insures Tight Car**

A modern equipped vacuum-water test booth operated daily by Pontiac Motor division since the beginning of model year 1959, insures that the new Pontiac is water tight at cruising speeds in the severest of showers.

The new booth's special vacuum equipment creates the same conditions existing within the car that are experienced during actual road speeds of 50 to 60 miles per hour. Air is removed from the car interior by vacuum apparatus attached to the front passenger window vent as 36 spray nozzles drench the body and underside with 180 gallons of water per minute. Following four minutes of test, Pontiac quality control inspectors perform a thorough check of the windshield, windows, doors, trunk, and underbody. Any possible leak is remedied on the spot.

Operated on a sampling basis the division's new vacuum rig augments an 80-foot spray booth which is utilized to test all new Pontiacs under static conditions.

**Padded Panel Is Feature on Imperial**

A newly designed safety padded instrument panel is featured in the new Imperial automobile.

It features a projecting hood over the instrument cluster, eliminating the possibility of windshield glare during night driving.

The 1959 Imperial is the first model to be built in Chrysler corporation's new Imperial plant. Hamlin Motor company is the local sales representative.

**Wider Tread Designed On New Pontiac Cars**

Among innovations engineered into Pontiac for 1959 is an exclusive wider tread between right and left wheels which has been increased nearly five inches. Models are on display at Dean and Taylor Pontiac company, Medford.

The wider tread improves stability, riding comfort and resistance to cross winds.

**WHAT A FRIEND!**

Los Angeles — (UPI) — James C. Reeves, 27, refused to go to jail on a traffic violation arrest unless he could take a friend named Crawley along. Officers allowed Reeves to do so — when they learned the friend was "Crawley," a caterpillar.

**14 New Body Styles Found in Pontiac**

The debut of the 1959 Pontiac includes 14 all-new body styles, "unmatched in beauty and unprecedented in fresh styling approach," according to the Dean and Taylor Pontiac company.

Window area in the new line, from the luxurious Bonnevilles to the lowest priced Catalina models, is up to 37 per cent greater. Imparting added appeal is the standardization of the Magic-Mirror acrylic lacquer finishes, 15 solid colors and 42 recommended two-tone combinations.

The high-gloss lacquer, introduced by Pontiac in 1956, is two to five times more weather resistant than other paints, a company spokesman reported. The line entices the artist's eye with such colors as Royal Amethyst, Gulfstream Blue, Shoreline Gold, Seaspray Green, Canyon Copper, Silvermist Gray and Mandalay Red. Greater Windshield

A 60 per cent greater area Vista-Panoramic windshield extending into the roof and a large wrap-around rear window, lend a spectacular effect of aircraft design.

The new four-door Vista hardtop, available in all series features a modernistic roof

over-hang in the rear. Full width, wrap-around rear bumpers, an expansive rear deck lid, oval shaped tail lamp ports and elongated ornamentation accentuate the low, wide rear silhouettes of the new Pontiac line.

Dual head lamps mounted in twin grilles, wrap-around two-bar bumper and a V-shaped hood design extending rearward from the grilles are predominant features of the front view.

**Puyallup Daffodile Fete Opens With Big Parade**

Tacoma — (UPI) — The Puyallup Valley Daffodil Festival, one of the largest and most colorful celebrations in the Pacific Northwest, opened Saturday with the annual parade through Tacoma, Puyallup and Sumner.

The golden daffodil was featured on many of the 40 floats which were in the parade. Seventeen bands, 18 drill teams, drum and bugle corps and mounted units also participated.

**Columbia Gorge Appropriation Passed**

Salem — (UPI) — The House has passed and sent to the governor a bill appropriating money for the Columbia Gorge commission.

Rep. George Annala (D-Hood River) said \$50,000 was provided to acquire private property to preserve the scenic beauty of the gorge. The voluntary commission also arranges trades of gorge property for other property in the state.

Washington — (UPI) — High official sources disclosed Saturday that Nationalist China is preparing to withdraw some of its troops from embattled Quemoy and replace them with increased firepower supplied by the United States.



**DECIDED?**—Quoting sources "believed to be reliable," a CBS news correspondent said that Secy. of State John Foster Dulles (shown here in file photo) has decided to resign. The correspondent, Dan Schorr, says that Dulles recommended Undersecy. of State Christian Herter as his successor.

**"WALK-IN" COUNTER**

Landstuhl, Germany — (UPI) — The U. S. Army has installed a 10-ton "walk-in counter" to measure and study radioactivity of the Western European population. A spokesman stressed that the project was not being conducted because of any suspicion of excess radioactivity in the area, but simply to add to the scientific knowledge of the effects of radioactivity on the human body.



**ENJOY PRIZE**—Mr. and Mrs. Jack Koken, 120 Ridge rd., Ashland, were among 100 top Chrysler and Imperial salesmen and their wives who recently won trips to Nassau, Bahamas, with Chrysler and Imperial division executives as hosts. The salesmen are members of the Centurion chapter of the Chrysler Medallion club. Koken is associated with Lithia Motors.

**ECONOMY BUY**  
 from the Economy Champ  
 brand new  
**59 Plymouth** 4-Door SEDAN  
**\$2392**  
 Delivered Medford with  
 • Overdrive Trans.  
 • Fresh Air Heater  
 • Directional Signals  
 • Torsion-Aire Ride  
 • Arm Rests  
 • Electric Swipes  
**\$392 DOWN**  
**\$66.40 per MO.**  
**DICK KNIGHT CO.**  
 Plymouth - DeSoto - Simca  
 33 S. RIVERSIDE at 8TH ST.

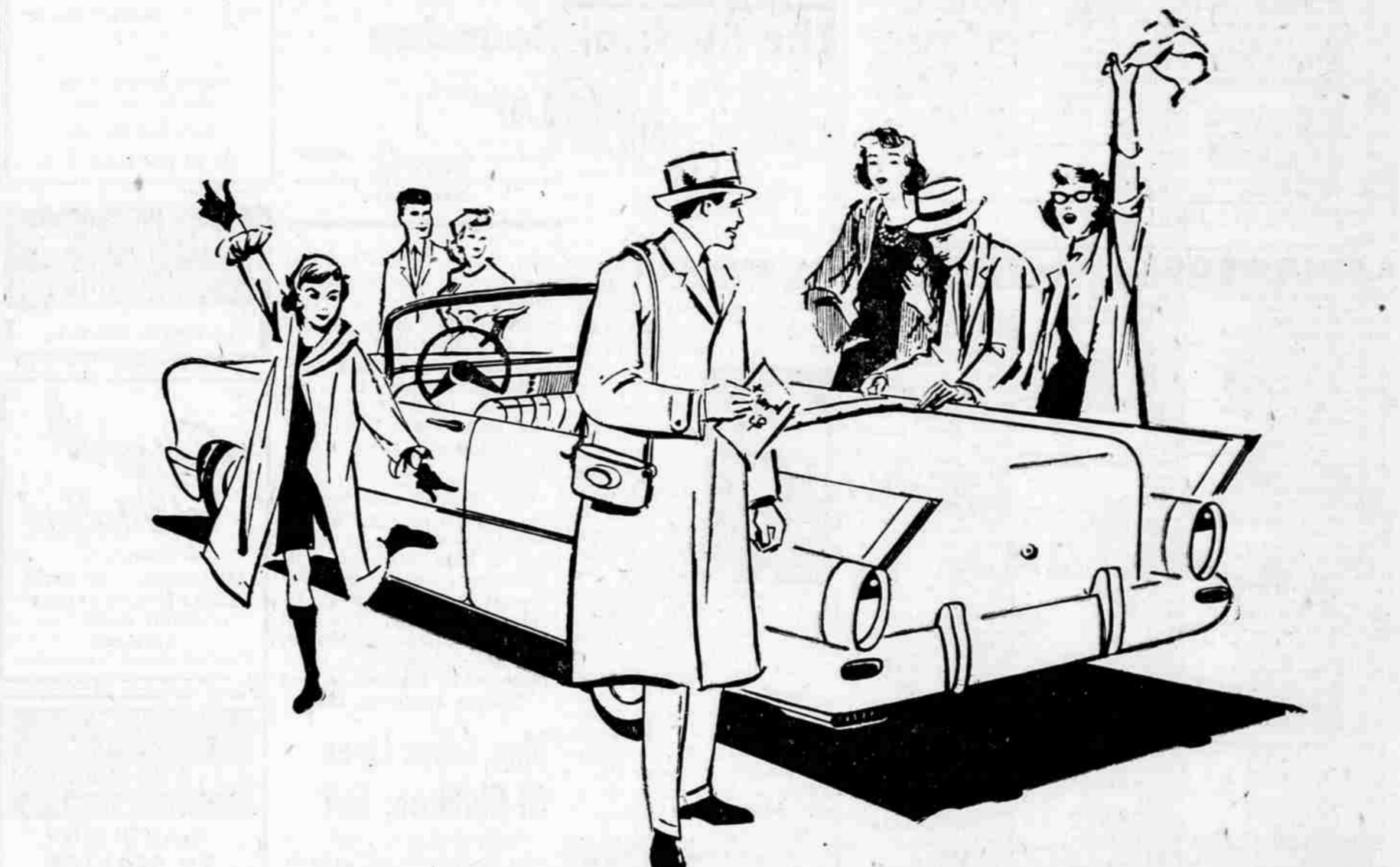
**HOMEOWNERS and BUSINESSMEN!**  
 Combine your fire and casualty insurance premiums...  
 in a budget plan that fits your needs...  
 Pay for your protection as you use it.  
 As your INDEPENDENT INSURANCE AGENT, we can combine all your fire and casualty insurance premiums and arrange for you to pay for them in convenient monthly, quarterly, semi-annual or annual payments. Even policies you have in companies other than those of the America Fore Loyalty Group may be included.  
**America Fore Loyalty Group**  
 INSURANCE COMPANIES  
 YOUR Independent AGENT  
**DON STATHOS, INSUROR**  
 Professional Insurance Protection  
 220 South Central - Medford  
 PHONE SP 2-2677



**REPOSITIONED**—To make it "America's most practical car," manufacturers of the 1959 Edsel report that it has been repositioned in price and size. Offered in a selection of 10 models in three series, the Edsel has increased passenger space with no added overall length, reduced total weight and a wide selection of economy engines and transmissions. Shown here is the Corsair four-door hardtop (left) and the rear of the Ranger four-door sedan, both on display at Medford Motors, 225 South Riverside ave.

Washington — (UPI) — Carolyn Marie Harris, brown-haired, blue-eyed daughter of Rep. Oren Harris (D-Ark.), Saturday reigned as queen of the Cherry Blossom Festival. Carolyn, a senior at the University of Arkansas and future school teacher, was selected from among 53 cherry blossom princesses from all the states and territories.

**NEW ADDING MACHINES**  
 Priced from **\$119.50** UP  
 Typewriters—New & Used  
 Adders—Calculators  
 Portables—All Makes  
 We Rent  
 • Adders  
 • Typewriters  
 • Calculators  
**VOIGHT'S**  
**MEDFORD OFFICE EQUIPMENT CO.**  
 FRIDEN AGENCY  
 8th & Grape, Medford • Phone SP 2-4100



**LIVE BETTER BY FAR... WITH A BRAND NEW CAR**



Fun's fun — especially when it's the fun of owning a breathtaking brand new car. And it's truer than ever this year. From the latest advances in engineering to distinctive styling, every '59 model is designed with fun in mind.  
 So stop putting off until tomorrow what you can enjoy today. Start living—really living—with a brand new car.  
 Why not get over to your favorite dealer's and start driving the most carefree, trouble-free car ever built. Stop longing—start living... with a brand new car!

**stop longing... start living!**

**SEE YOUR DEALER TODAY**

**COURTESY CHEVROLET**  
 NINTH at BARTLETT

**CRATER LAKE MOTORS**  
 MAIN at FIR

**DARRELL MILLER COMPANY**  
 415 SOUTH RIVERSIDE

**DEAN & TAYLOR PONTIAC CO.**  
 SIXTH and GRAPE

**DICK KNIGHT COMPANY**  
 33 SOUTH RIVERSIDE at 8th STREET

**HAMLIN MOTOR COMPANY**  
 8th and FRONT

**JAY ALLEN COMPANY**  
 1078 COURT STREET

**LEA MOTORS**  
 5th and BARTLETT

**MEDFORD MOTORS**  
 225 SOUTH RIVERSIDE

**MORSE MOTORS**  
 6th and IVY

**PARSONS MOTORS**  
 315 EAST FIFTH

**SKINNER-BUICK-CADILLAC**  
 143 SOUTH RIVERSIDE

**STEVENS AUTO SALES**  
 505 NORTH CENTRAL